

# 12,900 Sq. Ft. Warehouse FOR LEASE



**5147 W. Clifton Street  
Tampa, FL 33634**



<b>SPACE SIZE:</b>	12,900 Sq. Ft.
<b>OFFICE:</b>	4,800 Sq. Ft.
<b>WAREHOUSE:</b>	8,100 Sq. Ft.
<b>LOADING:</b>	1 Grade Level (14'x14') 1 Grade Level (12'x12') 1 Van High (8'x8')
<b>CLEAR HEIGHT:</b>	21 Feet
<b>POWER:</b>	400 Amps / 3 Phase
<b>OUTSIDE STORAGE:</b>	Fenced Front & Sides
<b>CONSTRUCTION:</b>	Concrete Block
<b>LEASE RATE:</b>	\$12.95 NNN

**Industrial Property Group, Inc.**

Licensed Real Estate Broker

2202 N. Westshore Blvd. • Suite 200 • Tampa, FL 33607

FOR MORE INFORMATION CONTACT:

**KELLI HATTON**

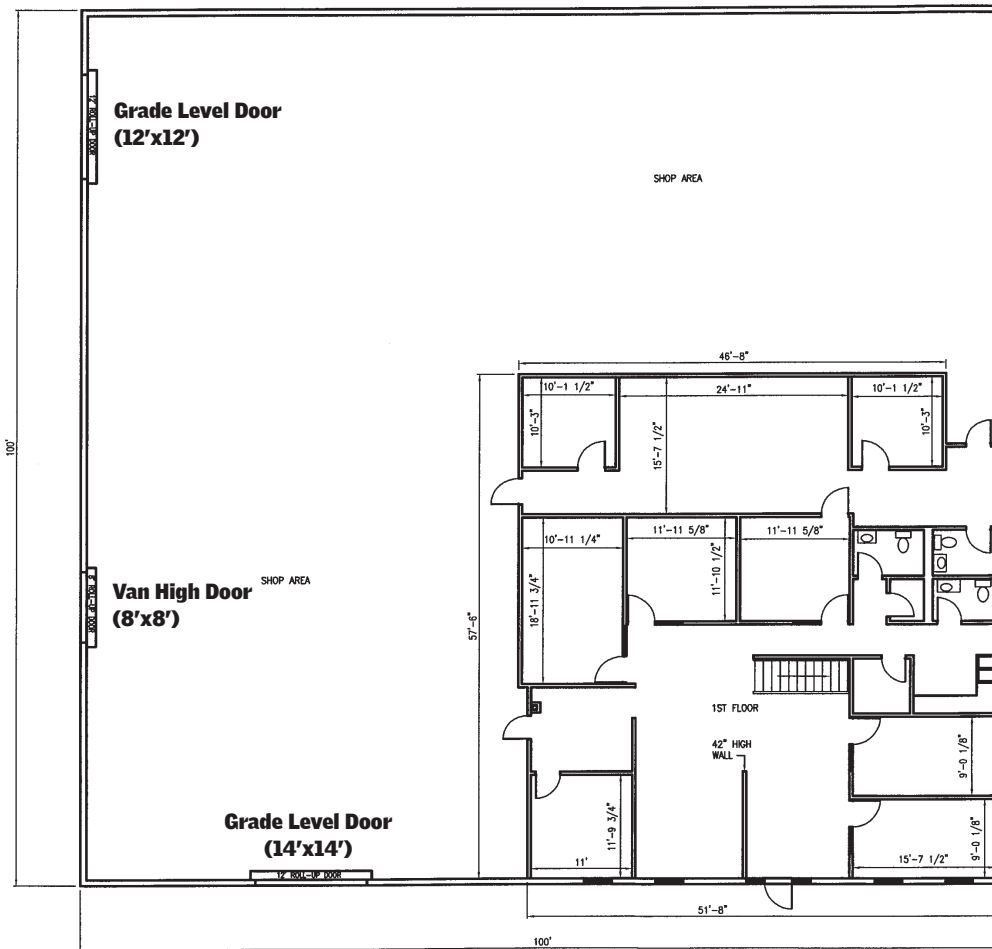
Cell: 813.454.1619

kelli@ipgcommercialrealty.com

[www.ipgcommercialrealty.com](http://www.ipgcommercialrealty.com)

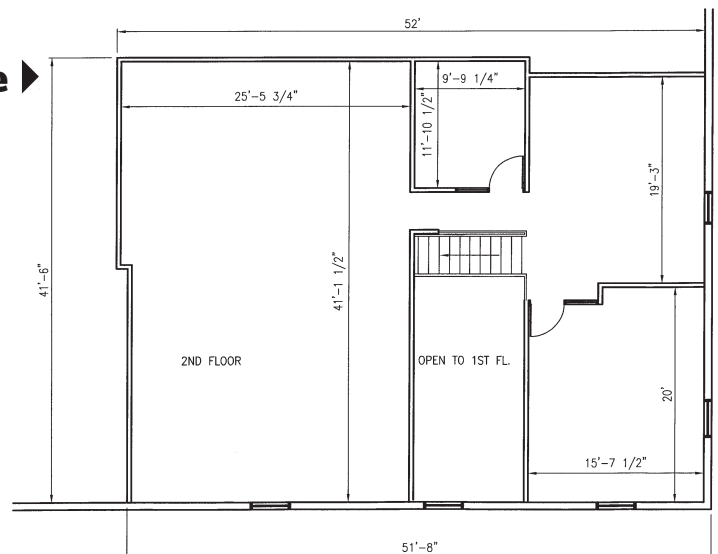
No warranty or representation, expressed or implied, is made as to the accuracy of the information contained herein, and same is submitted subject to errors, omissions, change of price, rental or other conditions, withdrawal without notice, and to any special listing conditions imposed by our principals.

# 5147 W. Clifton Street Tampa, FL 33634



◀ **First Floor Office**

**Second Floor Office ▶**



## Industrial Property Group, Inc.

Licensed Real Estate Broker

2202 N. Westshore Blvd. • Suite 200 • Tampa, FL 33607

FOR MORE INFORMATION CONTACT:

**KELLI HATTON**

Cell: 813.454.1619

kelli@ipgcommercialrealty.com

**www.ipgcommercialrealty.com**

No warranty or representation, expressed or implied, is made as to the accuracy of the information contained herein, and same is submitted subject to errors, omissions, change of price, rental or other conditions, withdrawal without notice, and to any special listing conditions imposed by our principals.