



OFFERING MEMORANDUM

# MARINA DEL REY WATERFRONT PROPERTY

3111 OCEAN FRONT WALK  
MARINA DEL REY, CA 90292

**AVAILABLE FOR SALE**

±8,000 SF Mixed-Use  
Opportunity at the Venice Pier



THE OPPENHEIM GROUP  
COMMERCIAL REAL ESTATE



WELCOME TO

# 3111 OCEAN FRONT WALK

3111 Ocean Front Walk presents a rare beachfront mixed-use investment opportunity in the heart of Marina del Rey, just steps from the Venice Pier and one of Southern California's most iconic coastal destinations. Known as the famed "Angel of Unity" building, the property is a landmark architectural asset positioned at the intersection of Venice Beach culture, Silicon Beach innovation, and world-class tourism.

The four-story  $\pm 8,000$  SF property sits on  $\pm 5,039$  SF of irreplaceable coastal land and features a dynamic mix of commercial, residential, and penthouse space with panoramic ocean-to-city views. Zoned C4, the asset offers exceptional flexibility for investors or operators seeking residential, retail, hospitality, or experiential use potential in one of Los Angeles' most supply-constrained beachfront markets. Surrounded by affluent demographics, thriving tourism, and the continued growth of Silicon Beach, 3111 Ocean Front Walk offers a compelling blend of long-term value, income potential, and iconic positioning.

**\$10.995M**

Price

**5**

Total Units

**$\pm 8,000$**

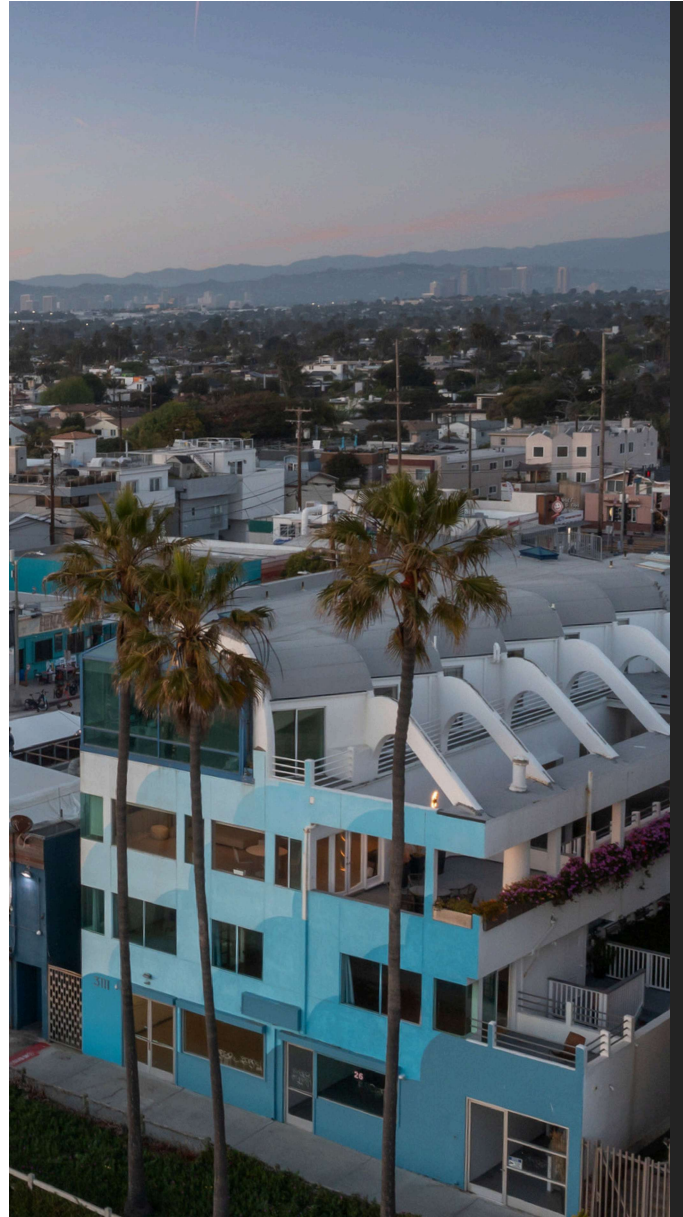
Lot Size

EXCLUSIVE OFFERING MEMORANDUM

## BUILDING SPECIFICATIONS

PRICE	\$10,995,000
NUMBER OF UNITS	5 (with Ocean Views)
BUILDING SIZE	±8,000 SF
LOT SIZE	±5,039 SF
PARKING SPACES	±14
YEAR BUILT	1992
STORIES	4
ZONING	C4
OCCUPANCY	Offered Vacant
PARCEL NUMBER	4225-001-002

3111 OCEAN FRONT WALK | MARINA DEL REY, CA 90292



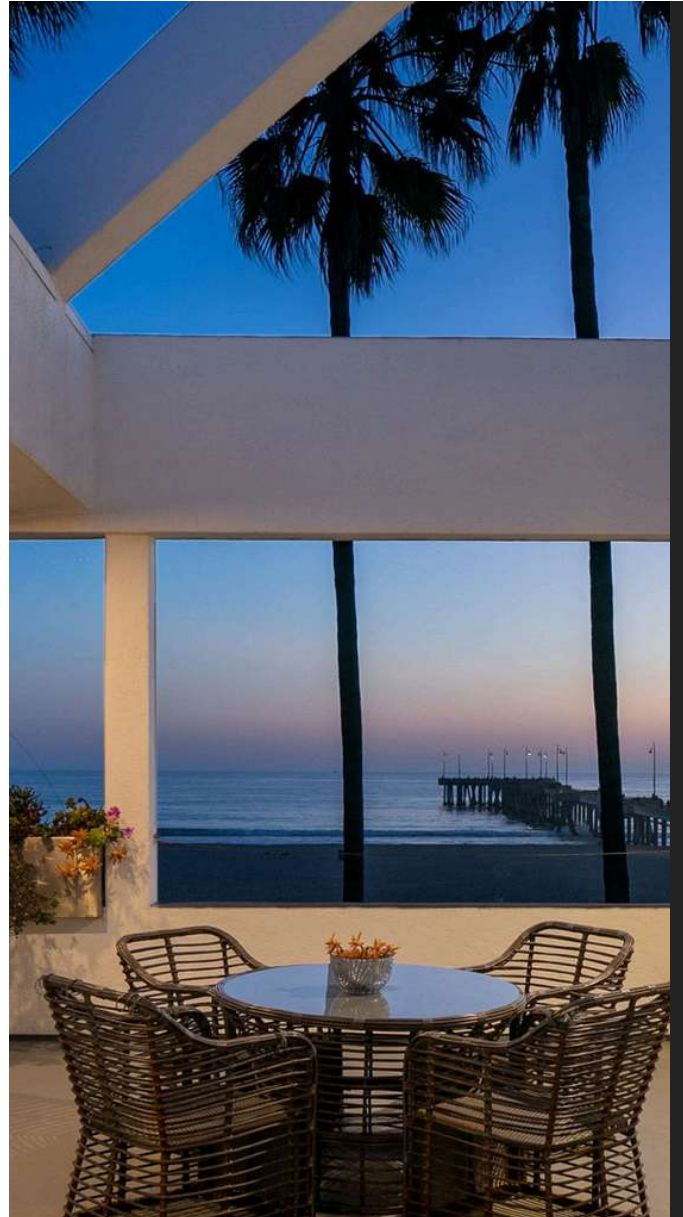
EXCLUSIVE OFFERING MEMORANDUM

## UNIT BREAKDOWN

<b>UNIT 101</b>	300 SF - Creative office/retail space
<b>UNIT 102</b>	1,200 SF - Creative office/retail space
<b>UNIT 201</b>	1,500 SF - Apartment   2BD/2BA
<b>UNIT 202</b>	1,500 SF - Apartment   2BD/3BA
<b>UNIT 301</b>	3,500 SF - Penthouse   2BD/2BA + loft

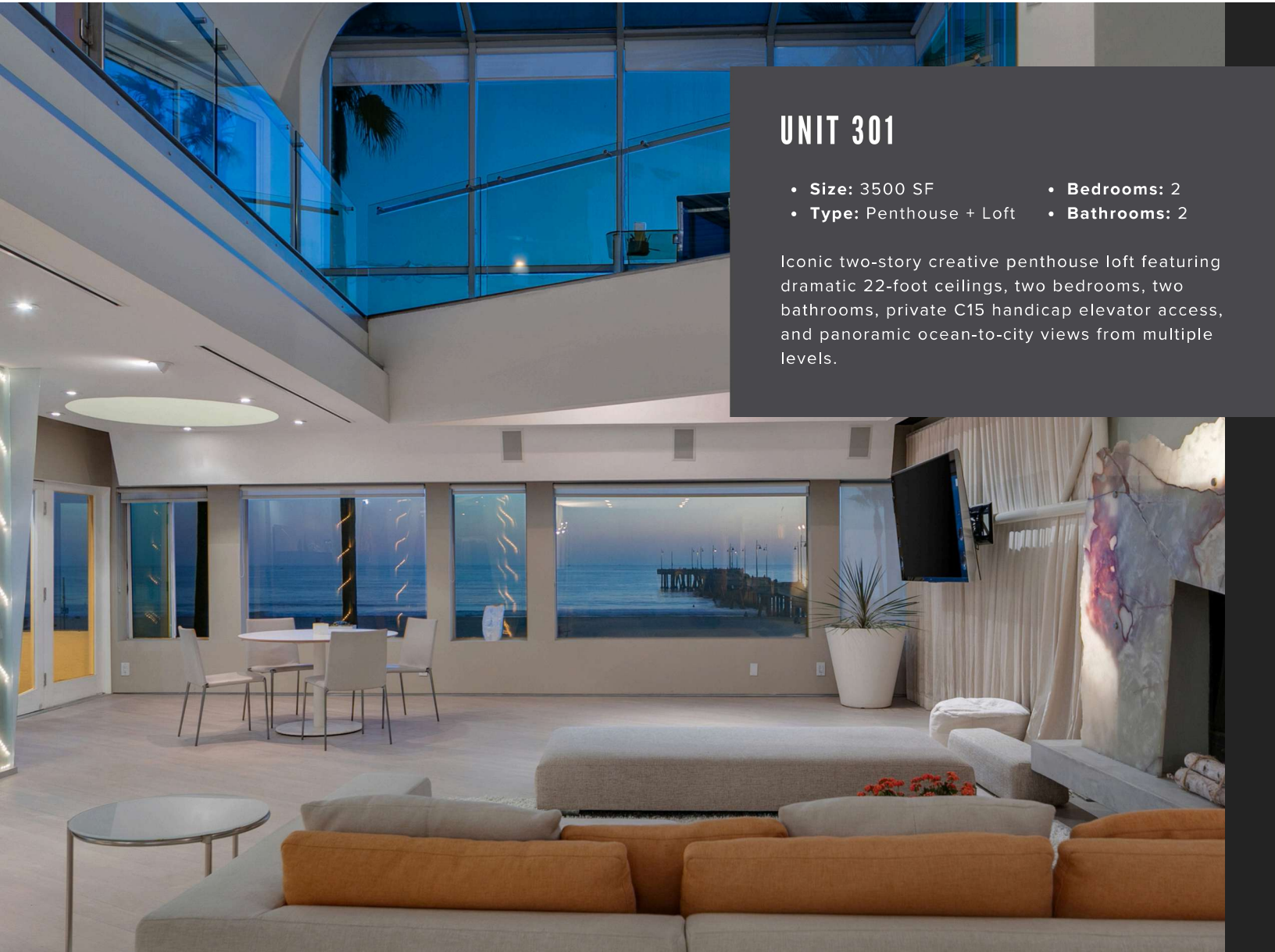
**5 TOTAL UNITS**  
OCEAN VIEWS ON EVERY LEVEL

3111 OCEAN FRONT WALK | MARINA DEL REY, CA 90292





3111 OCEAN FRONT WALK | MARINA DEL REY, CA 90292



## UNIT 301

- **Size:** 3500 SF
- **Bedrooms:** 2
- **Type:** Penthouse + Loft
- **Bathrooms:** 2

Iconic two-story creative penthouse loft featuring dramatic 22-foot ceilings, two bedrooms, two bathrooms, private C15 handicap elevator access, and panoramic ocean-to-city views from multiple levels.

# UNIT 301



# UNIT 301



# UNIT 301





## UNIT 201

- **Size:** 1500 SF
- **Bedrooms:** 2
- **Type:** Apartment
- **Bathrooms:** 2

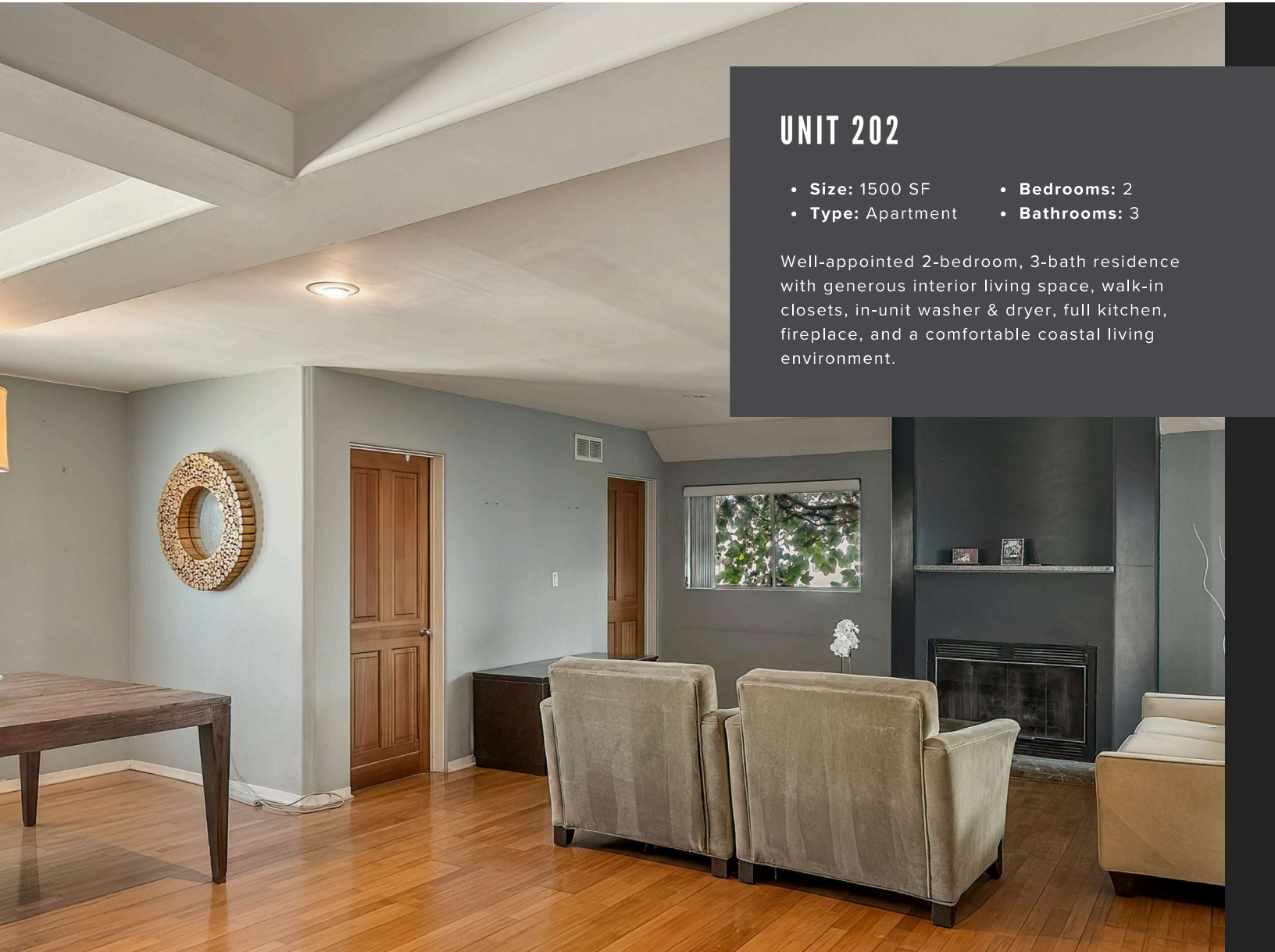
Spacious 2-bedroom, 2-bath oceanfront residence featuring expansive living areas, walk-in closets, in-unit washer & dryer, fireplace, private balcony, and sweeping coastline and sunset views.

# UNIT 201



# UNIT 201





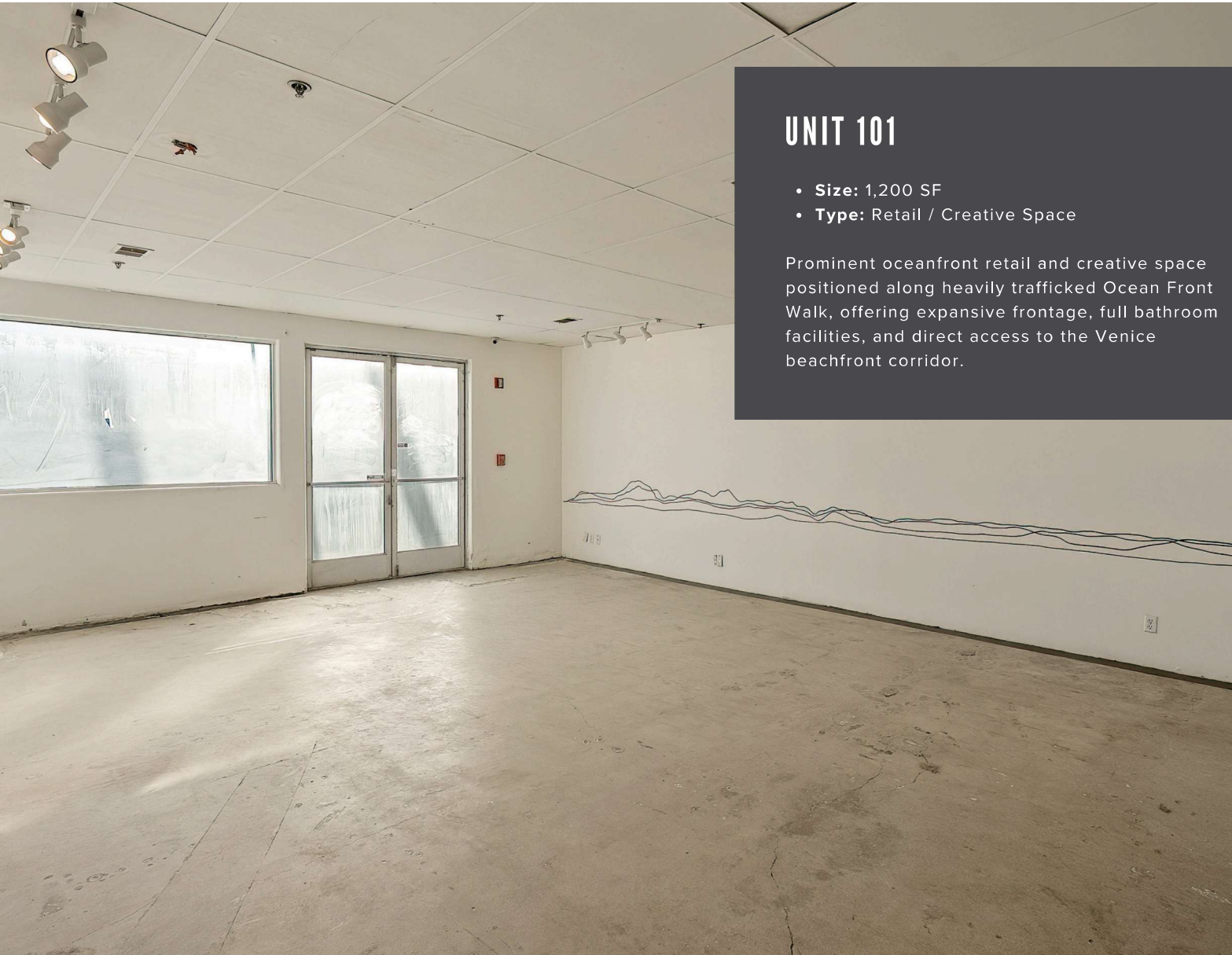
## UNIT 202

- **Size:** 1500 SF
- **Bedrooms:** 2
- **Type:** Apartment
- **Bathrooms:** 3

Well-appointed 2-bedroom, 3-bath residence with generous interior living space, walk-in closets, in-unit washer & dryer, full kitchen, fireplace, and a comfortable coastal living environment.

# UNIT 202





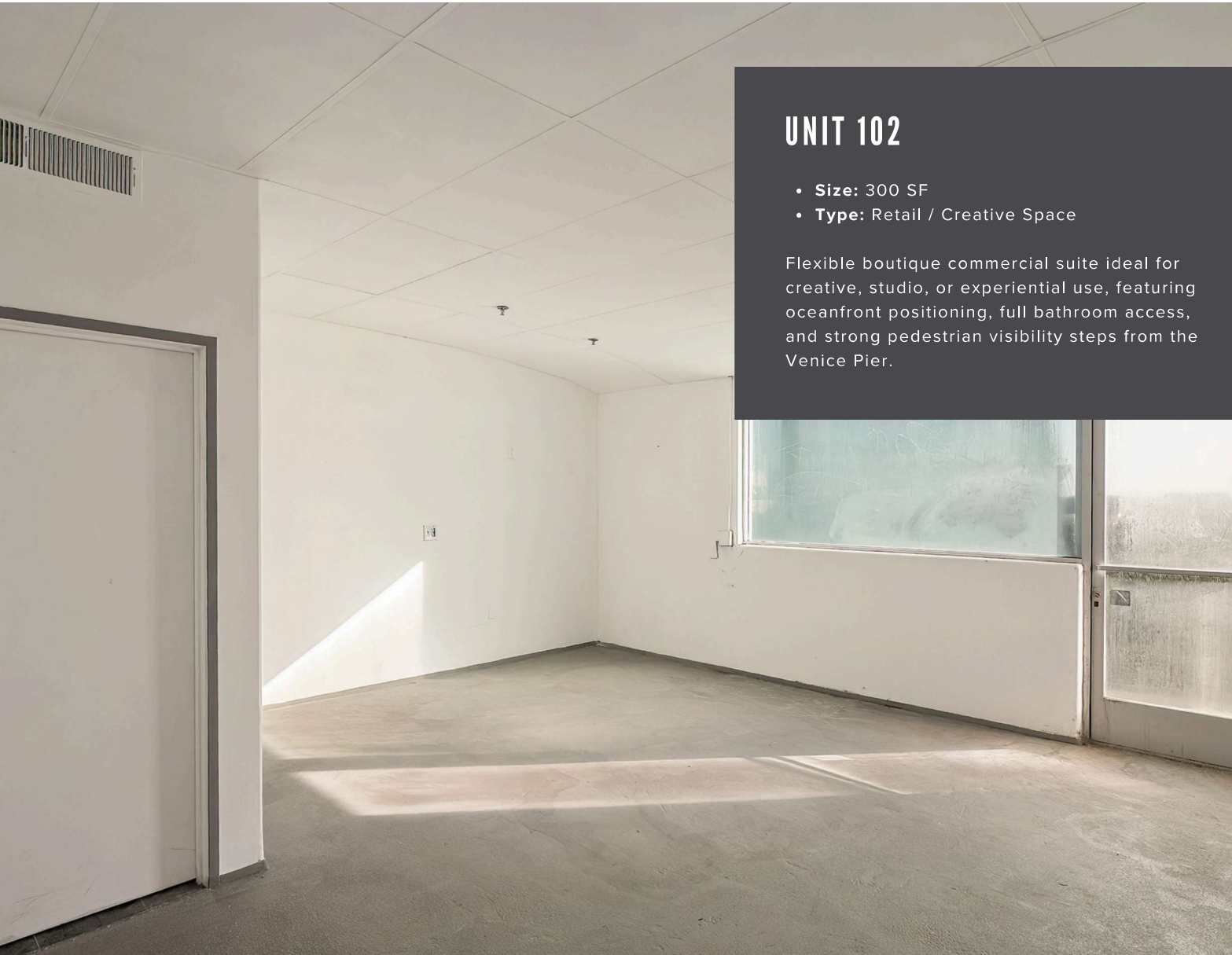
## UNIT 101

- **Size:** 1,200 SF
- **Type:** Retail / Creative Space

Prominent oceanfront retail and creative space positioned along heavily trafficked Ocean Front Walk, offering expansive frontage, full bathroom facilities, and direct access to the Venice beachfront corridor.

# UNIT 101





## UNIT 102

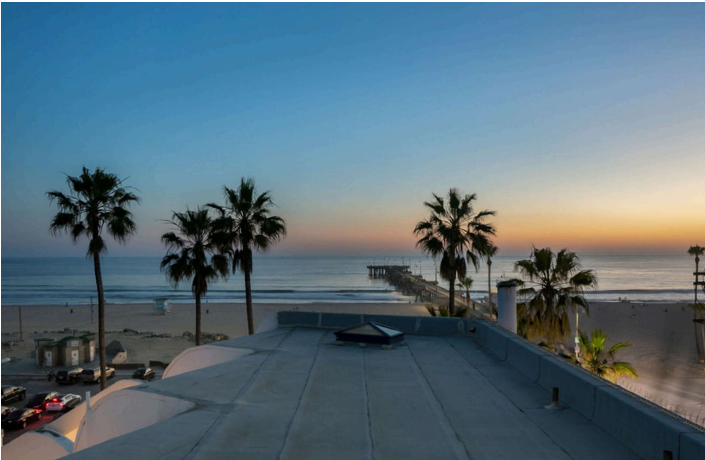
- **Size:** 300 SF
- **Type:** Retail / Creative Space

Flexible boutique commercial suite ideal for creative, studio, or experiential use, featuring oceanfront positioning, full bathroom access, and strong pedestrian visibility steps from the Venice Pier.

# EXTERIOR



# EXTERIOR



# INVESTMENT SUMMARY

Situated directly on Ocean Front Walk, 3111 Ocean Front Walk offers a rare opportunity to control an irreplaceable portion of the Venice Beach coastline. Spanning approximately 8,000 square feet across four stories, the iconic “Angel of Unity” building features ground-floor commercial space, second-floor residential units, and a dramatic two-story penthouse with panoramic ocean-to-city views. Positioned moments from the Venice Pier, Abbot Kinney, Marina del Rey, and the heart of Silicon Beach, the property combines unmatched beachfront visibility, flexible use potential, and immediate upside through leasing, repositioning, or owner-user occupancy.

## PROPERTY HIGHLIGHTS

- Magnificent pride-of-ownership beachfront asset located along world-famous Ocean Front Walk
- Iconic “Angel of Unity” building mural by world-renowned painter Rassouli
- Generational opportunity to control a highly visible, irreplaceable portion of Venice Beach
- Ground-floor commercial units delivered vacant, offering immediate leasing upside at market rents
- Flexible retail, office, creative, live-work, or boutique hospitality potential
- Second-floor multifamily units delivered vacant, allowing for repositioning and premium coastal rents
- Dramatic two-story penthouse suite with 22-foot ceilings and sweeping ocean-to-city views
- Located approximately one mile from Abbot Kinney and Marina del Rey Harbor
- Premier coastal trade area supported by tourism, walkability, affluent demographics, and Silicon Beach demand
- Potential owner-user, investor, boutique hotel, Airbnb, or small-lot subdivision opportunity, subject to approvals

EXCLUSIVE OFFERING MEMORANDUM

# DEMOGRAPHICS

## POPULATION

---

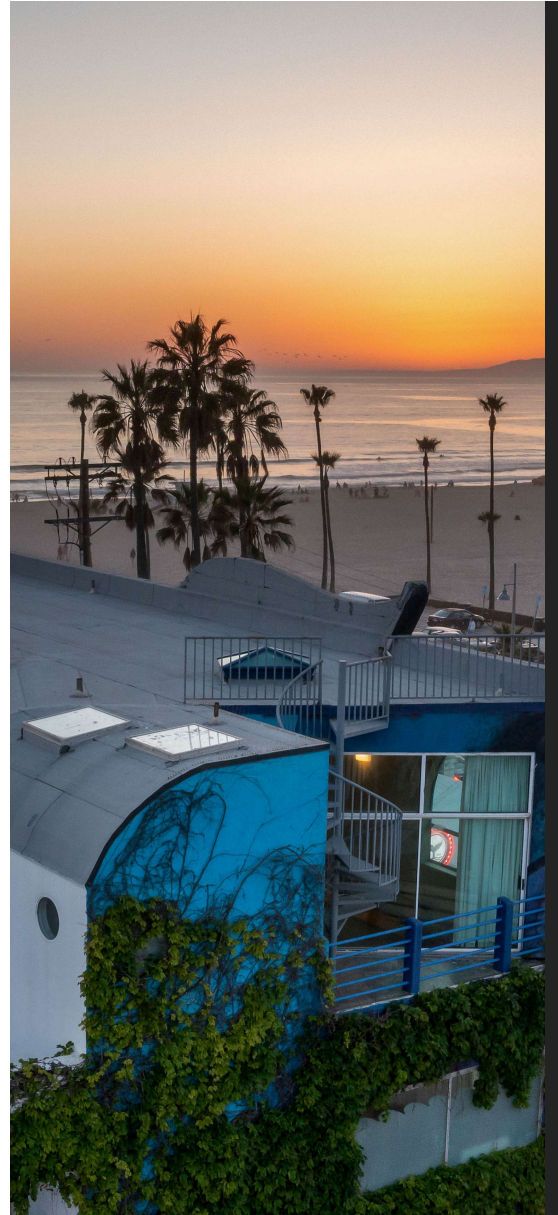
	1 MILE	3 MILES	5 MILES
2010 CENSUS	21,731	141,497	384,491
2020 CENSUS	23,932	151,997	410,175
2024 ESTIMATED	26,141	160,465	427,422
2029 PROJECTED	24,527	151,873	410,529

## HOUSEHOLD INCOME

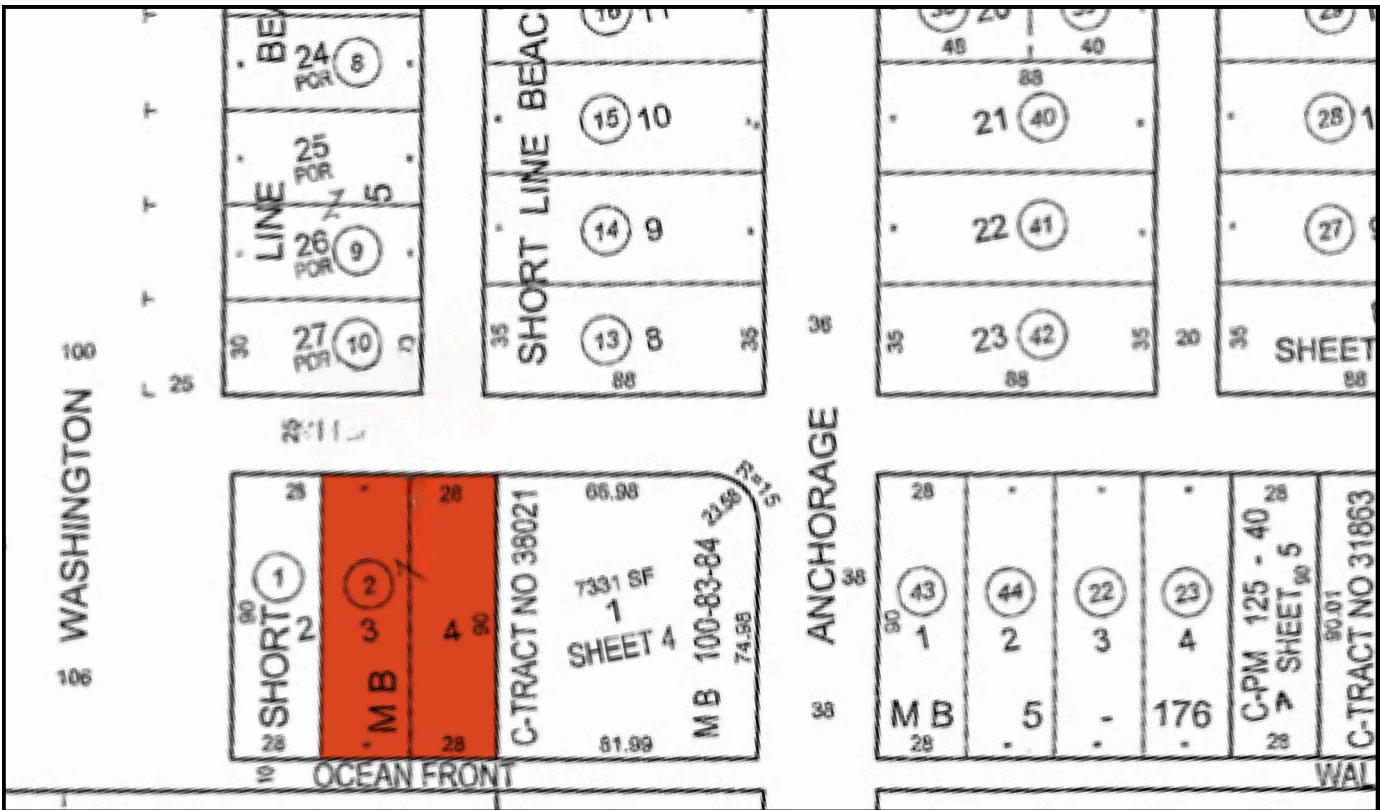
---

	1 MILE	3 MILES	5 MILES
2024 MEDIAN	\$149,445	\$128,458	\$125,634
2024 AVERAGE	\$214,106	\$195,566	\$188,536
2029 MEDIAN PROJECTED	\$154,390	\$132,131	\$129,371
2029 AVERAGE PROJECTED	\$226,311	\$206,002	\$198,437

3111 OCEAN FRONT WALK | MARINA DEL REY, CA 90292



# PARCEL MAP





3111 OCEAN FRONT WALK | MARINA DEL REY, CA 90292

EXCLUSIVE OFFERING MEMORANDUM

## IMPORTANT DISCLOSURES

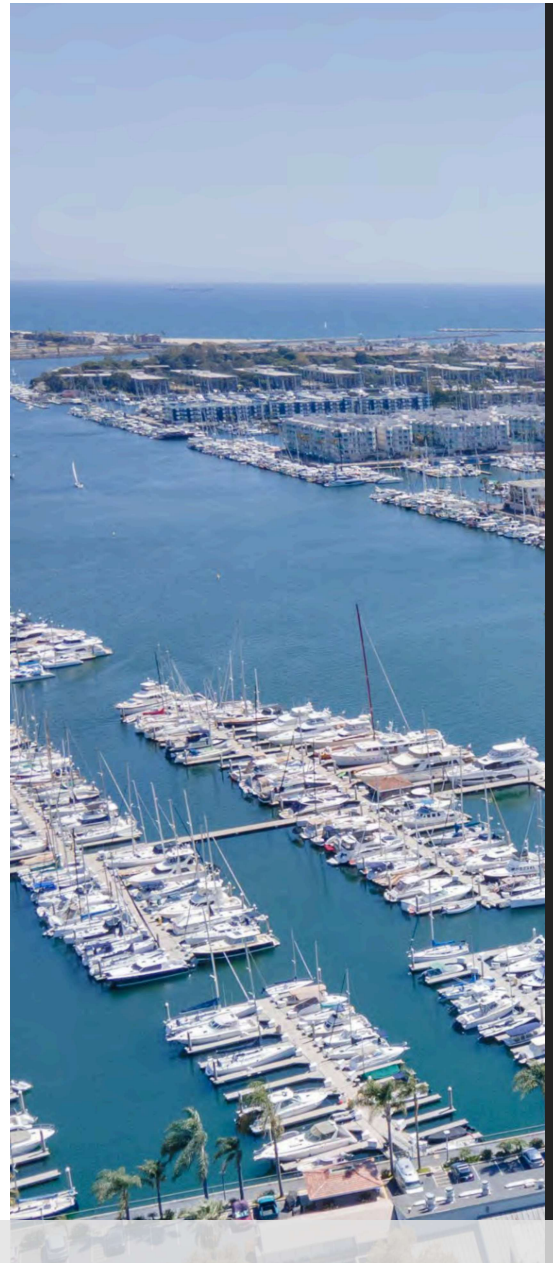
This Offering Memorandum (the "Memorandum") has been prepared by The Oppenheim Group for informational purposes only. The information contained herein is believed to be reliable, but no representation or warranty, express or implied, is made regarding its accuracy, completeness, or correctness. Prospective purchasers are encouraged to conduct their own due diligence and consult with their advisors before making any investment decision.

This Memorandum is not an offer to sell or a solicitation of an offer to buy any securities or interests in the property. Any offering or solicitation will be made only to qualified prospective purchasers pursuant to applicable laws and regulations. The information contained in this Memorandum is confidential and is intended solely for the use of the recipient. It may not be reproduced or distributed, in whole or in part, without the prior written consent of The Oppenheim Group.

Prospective purchasers should rely solely on their own investigation and evaluation of the property and any investment decision should be made based on the purchaser's own analysis. The Oppenheim Group and its representatives make no representation or warranty, express or implied, as to the accuracy or completeness of the information contained herein.

By accepting this Memorandum, you agree to the above terms and conditions.

3111 OCEAN FRONT WALK | MARINA DEL REY, CA 90292





3111 OCEAN FRONT WALK | MARINA DEL REY, CA 90292



**JASON OPPENHEIM**

Founder / Broker  
949.635.4478  
jason@ogroup.com  
DRE# 01863254

**CAROLINE TAICHER**

Commercial Advisor  
310.598.1131  
caroline@ogroup.com  
DRE# 02099436

**CHRISTIAN EMERSON**

Commercial Team Lead  
916.517.0235  
christian@ogroup.com  
DRE# 02104669

**THE OPPENHEIM GROUP**

8604 Sunset Blvd.  
West Hollywood, CA 90069  
OGROUP.COM