

SOUTH WICHITA REDEVELOPMENT SITE

2201 S. Broadway St., Wichita, KS 67211



SALE PRICE: \$99,000.00
LOT SIZE: 0.47 Acres
ZONING: Limited Commercial
2023 TAXES: Generals: \$2,851.99
 Specials: \$5.33

PROPERTY HIGHLIGHTS

- Former Sonic location.
- Access from Broadway and Kinkaid St.
- 1/4 mile north of the intersection of Pawnee & Broadway which include the following businesses:



DEMOGRAPHICS	1 MILE	3 MILES	5 MILES
POPULATION	13,364	88,044	185,865
AVG. HH INCOME	\$47,527	\$54,564	\$59,523
MEDIAN AGE	37	37	38
TRAFFIC COUNTS			
PAWNEE & BROADWAY	28,369 VPD		



Offered exclusively by: Ben Gartner, CCIM | 316-292-3967 | bgartner@weigand.com

SOUTH WICHITA REDEVELOPMENT SITE

2201 S. Broadway St., Wichita, KS 67211

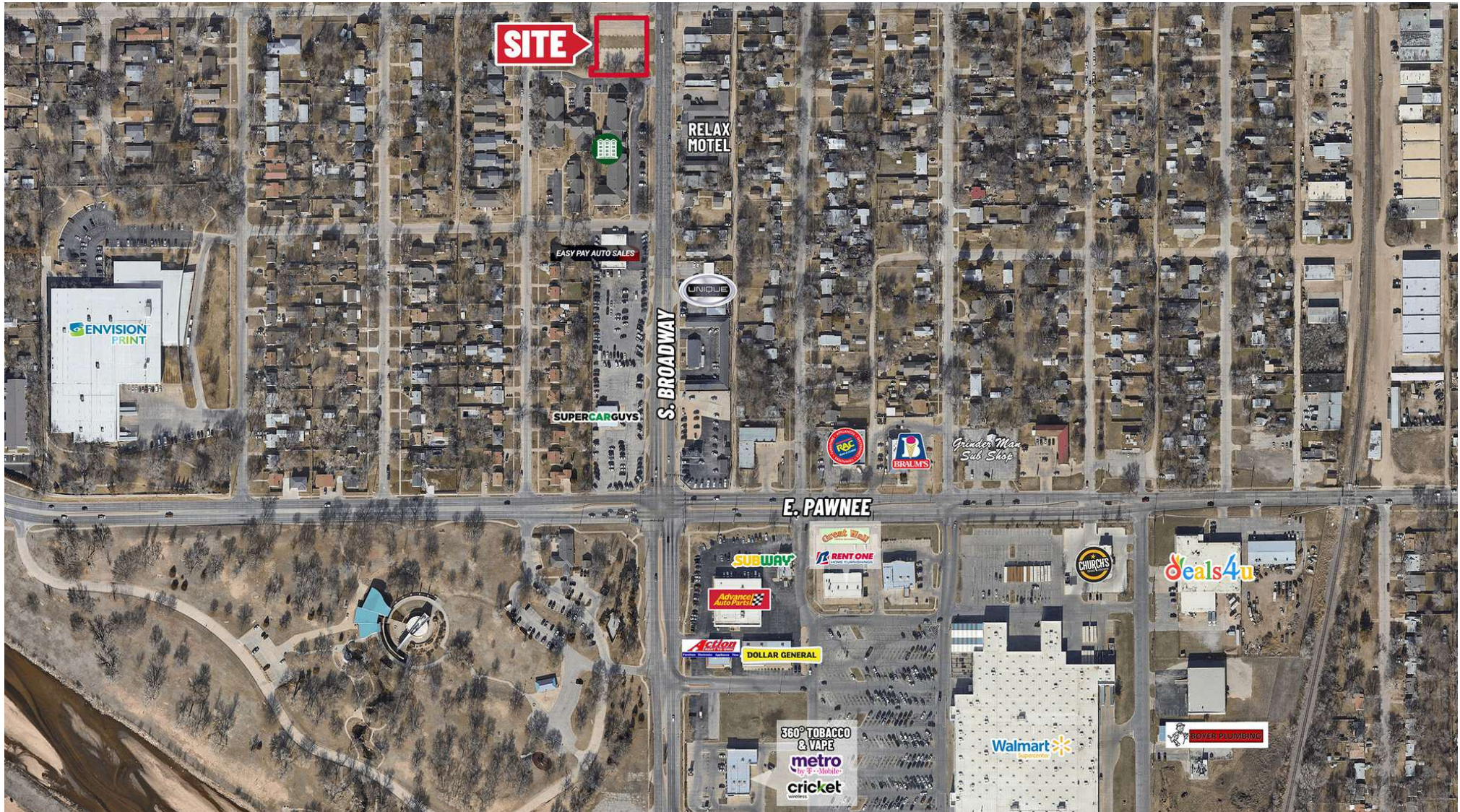


Offered exclusively by: Ben Gartner, CCIM | 316-292-3967 | bgartner@weigand.com

J.P. Weigand & Sons, Inc. Commercial | 150 N. Market Street, Wichita, KS 67202 | WeigandCommercial.com

SOUTH WICHITA REDEVELOPMENT SITE

2201 S. Broadway St., Wichita, KS 67211



Offered exclusively by: Ben Gartner, CCIM | 316-292-3967 | bgartner@weigand.com

J.P. Weigand & Sons, Inc. Commercial | 150 N. Market Street, Wichita, KS 67202 | WeigandCommercial.com