

**20**  
NORTH  
ORANGE

[20NOrange.com](http://20NOrange.com)

**20**  
**NORTH**  
**ORANGE**  
**AVENUE**

*prime office/retail space  
in downtown orlando*

BANYAN STREET  
CAPITAL

CUSHMAN &  
WAKEFIELD



AT THE CENTER  
*of it all*

**20 NORTH ORANGE PRIME OFFICE/RETAIL SPACE AVAILABLE**

1st Floor Suite 106 - 3,515± SF (available 9/1/2024)

**20 NORTH ORANGE HIGHLIGHTS**

Situated on the corner of Orange Avenue and Central Boulevard in the heart of downtown Orlando, 20 North Orange is a premier Class A office building with modern finishes and superior accessibility.

Re-designed to reflect today's modern workplace, 20 North Orange provides tenants and guests with an elevated office experience.



279,780 SF  
Office Building



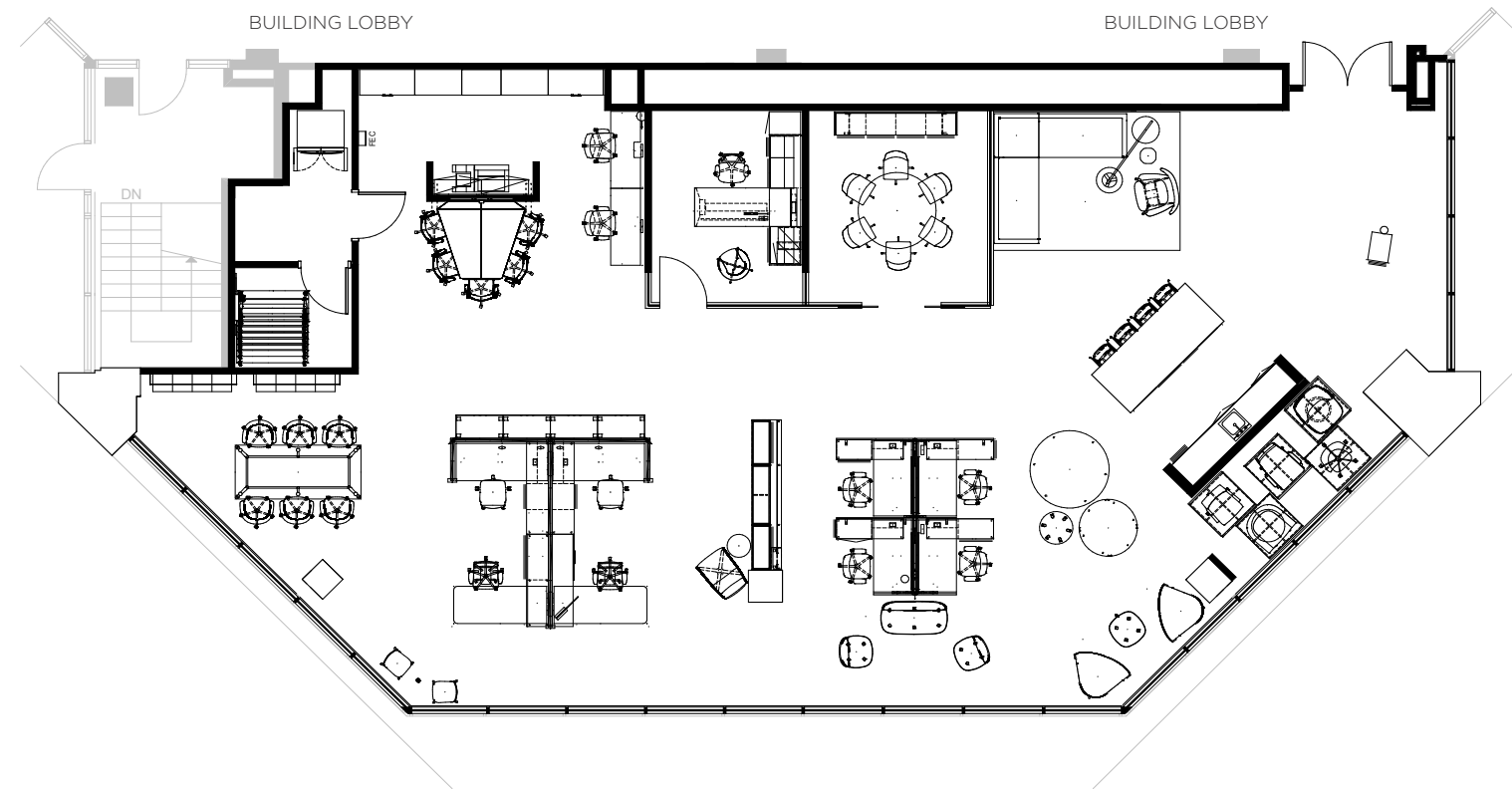
Easy Access to  
I-4 & SR 408



On-Site Management  
& 24/7 Security



Corner of "Main & Main  
in Orlando's CBD



**AMENITIES**



Ground Floor Retail  
Mecato's Cafe &  
Rolled Pita Bar



On-Site Cafe  
on the  
2nd Floor



2 Parking  
Garages with  
Skybridges



Tenant  
Conference  
Center



Renovated Lobby  
& 2nd Floor  
Common Area



In Building  
Bank ATM



Highest Parking  
Ratio in the CBD



Car Detailing  
Available  
On-Site



FLOOR TO CEILING WINDOWS



EXPOSED CEILINGS



ORANGE AVE STREET LEVEL



MODERN HIGH-END OPEN PLAN



# AT THE CENTER *of excitement*

## FOOD & BEVERAGE

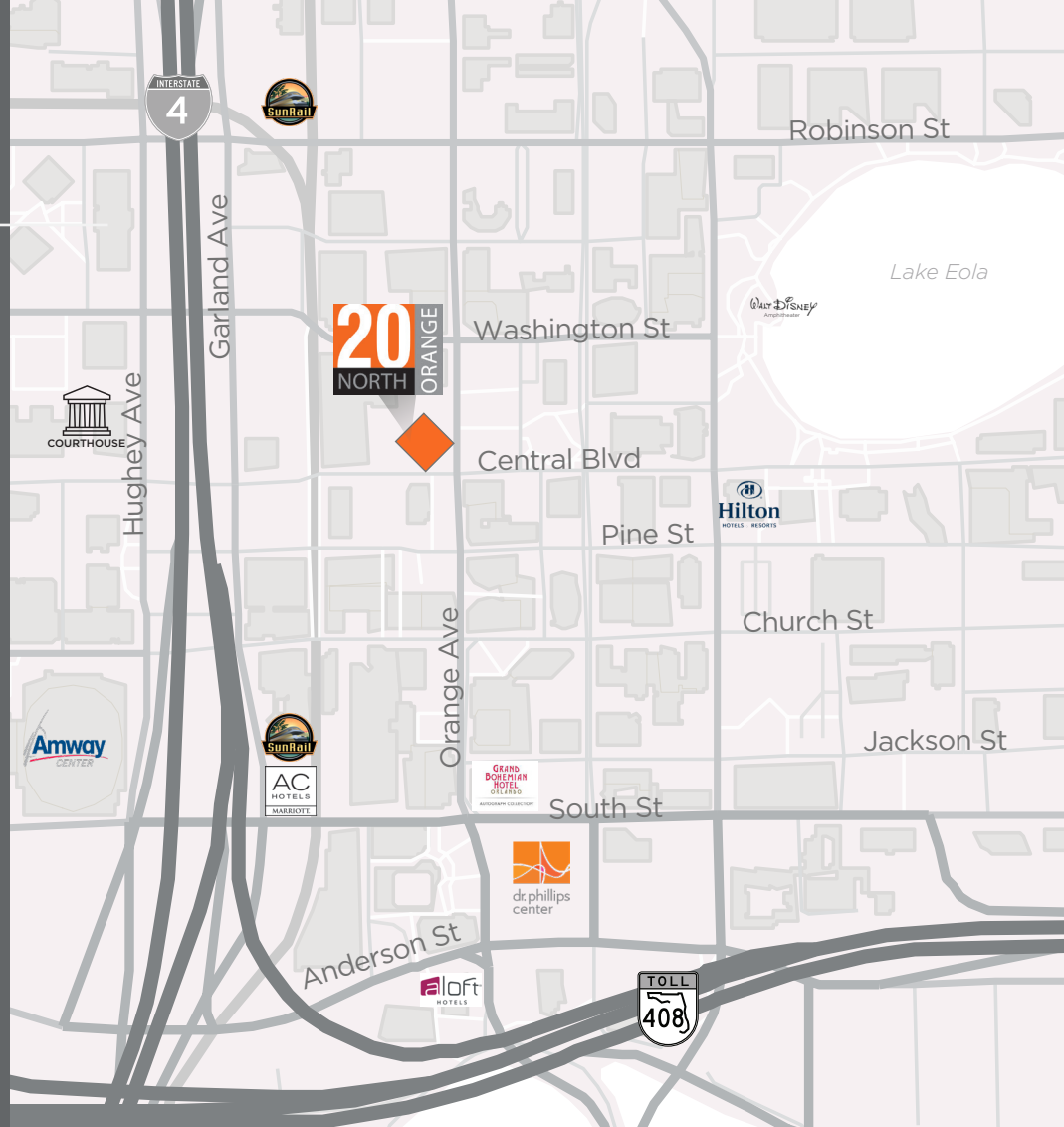
- Tin & Taco
- Mecato's
- Rolled Pita Bar
- Tropical Smoothie
- Artisan's Table
- Kres Chophouse
- The Citrus Club
- Super Rico Colombian Restaurant & Bar
- Bento Downtown Orlando
- Elixir
- Nature's Table Cafe
- Fixtion
- Motorworks Brewing
- Gitto's Pizza
- Wall Street Cantina
- CFS Coffee Downtown
- Dunkin' & Starbucks
- Latin Square
- Lake Eola Park
- 310 Lakeside
- Craft & Common
- Gringos Locos
- Deeply Coffee

## ENTERTAINMENT

- Amway Center
- Dr. Phillips Center for the Performing Arts
- SAK Comedy Club

## HOTELS

- AC Hotel By Marriott
- Grand Bohemian Hotel
- Aloft Orlando Downtown
- Embassy Suites by Hilton
- Marriott Orlando



# AT THE CENTER *of accessibility*



2 Sunrail  
Stations  
Nearby



10+ Lynx  
Bus Stops  
Nearby



Access to  
2 Major  
Highways

## FOR MORE INFORMATION:

### Robert Kellogg, CCIM

Managing Director  
+1 407 541 4416  
robert.kellogg@cushwake.com

20 N Orange Ave.  
Suite 300  
Orlando, FL 32801  
+1 407 841 8000  
cushmanwakefield.com

©2024 Cushman & Wakefield. All rights reserved. The information contained in this communication is strictly confidential. This information has been obtained from sources believed to be reliable but has not been verified. NO WARRANTY OR REPRESENTATION, EXPRESS OR IMPLIED, IS MADE AS TO THE CONDITION OF THE PROPERTY (OR PROPERTIES) REFERENCED HEREIN OR AS TO THE ACCURACY OR COMPLETENESS OF THE INFORMATION CONTAINED HEREIN, AND SAME IS SUBMITTED SUBJECT TO ERRORS, OMISSIONS, CHANGE OF PRICE, RENTAL OR OTHER CONDITIONS, WITHDRAWAL WITHOUT NOTICE, AND TO ANY SPECIAL LISTING CONDITIONS IMPOSED BY THE PROPERTY OWNER(S). ANY PROJECTIONS, OPINIONS OR ESTIMATES ARE SUBJECT TO UNCERTAINTY AND DO NOT SIGNIFY CURRENT OR FUTURE PROPERTY PERFORMANCE.

BANYAN STREET  
CAPITAL

CUSHMAN &  
WAKEFIELD