



CUSHMAN &  
WAKEFIELD



# 729



15TH STREET

729 SECURITIES BUILDING 729

# 1 BLOCK

from the White House.  
A Unique Opportunity  
To Own Your Space.

---

## CONTENTS

- 03 Property Description
- 04 Existing Conditions
- 05 Floor-By-Floor Overview
- 06 Floor Plans
- 11 Map





# 729 SECURITIES BUILDING 729

## PROPERTY DESCRIPTION

The iconic Securities Building offers unprecedented full floor office ownership opportunities a block from The White House. With direct access right off the elevator, each of the 3,400 square foot floors provides full floor identity with the added advantages of being a wholly owned condominium unit.

Owning office space at 729 15th Street, NW begins with the historic limestone façade and ornate two-story entrance lobby. The Securities Building is a 9 story distinctively DC building with individually metered and controlled HVAC units. The lower level of the building is a dedicated common area that offers a large conference room, bike racks, and two restrooms of which one has a shower.

Ideal for smaller associations and entrepreneurial small business owners, this centrally located office space is within easy walking access to the McPherson Square, Metro Center, Farragut West, and Farragut North Metro stops. The ownership advantage of office space in this size range has never before been available so close to the heart of downtown Washington.

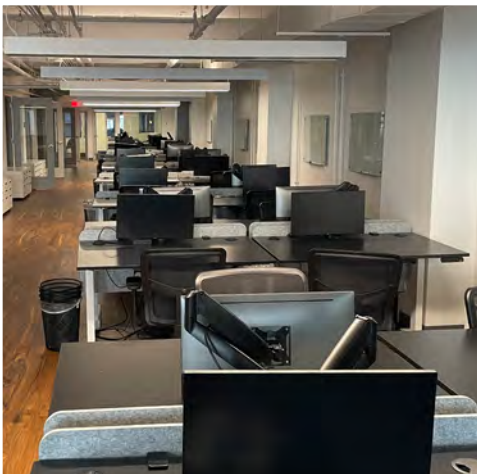
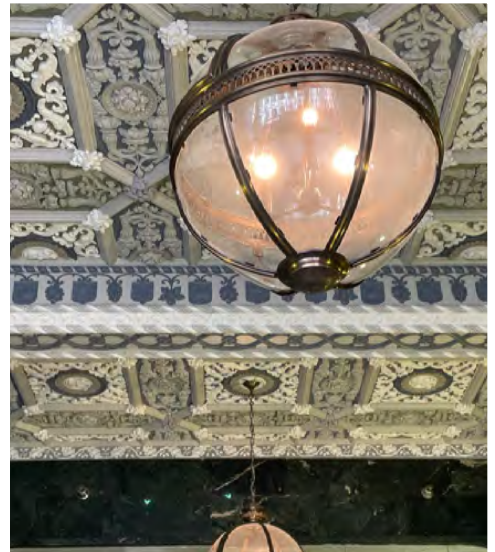
As opposed to rent-paying tenants, 729 15th Street owners will be able to lock in a mortgage instead of a lease with its inherent annual escalations while at the same time building equity through principal curtailment (paying down the mortgage) and potential price appreciation.

In 2021 over half of the 25 associations with the largest annual budgets in the Washington, DC area owned their office space. The time is now for smaller associations and not-for-profits to enjoy the same budget stability in a premiere location.



# EXISTING CONDITIONS

All available space has recently been built out to a modern elevated standard.





## FLOOR-BY-FLOOR OVERVIEW

FLOOR	SF	TOTAL SALES PRICE	SALES PRICE PSF
1	2,809	\$1,896,075	\$675.00
2	3,204	\$2,162,700	\$675.00
3	3,322	\$1,661,000	\$500.00
4	3,350	\$1,742,000	\$520.00
5	3,365	\$1,817,100	\$540.00
6	3,369	\$1,886,640	\$560.00
7	3,369	\$1,954,020	\$580.00
8	3,369	\$2,021,400	\$600.00
9	3,369	\$2,088,780	\$620.00

*1st and 2nd floors only sold together\**

*The Projected Operating Expenses (Net of occupant electricity charges on a floor-by-floor basis) are \$10.52 Per Square Foot*

*The Projected Real Estate Taxes are \$5.59 Per Square Foot*







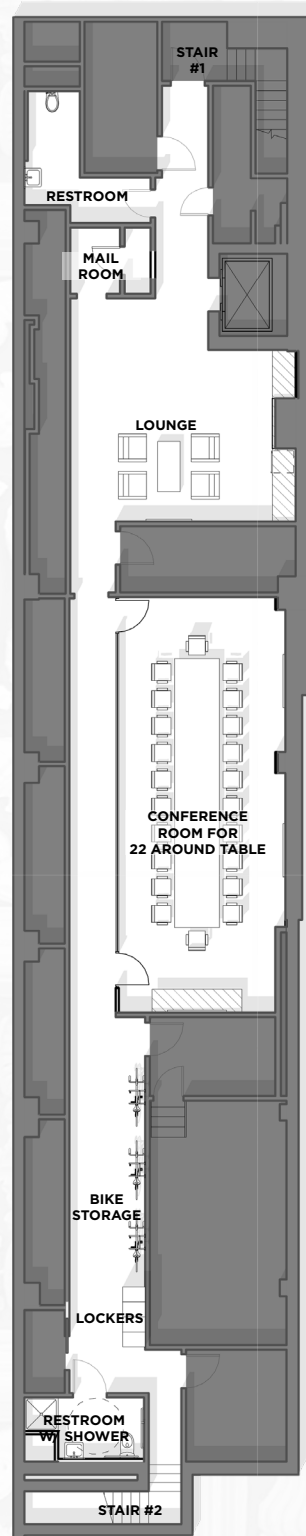
# Floor Plans



# BUILDING AMENITIES

## To Be Delivered

### LOWER LEVEL



### AMENITIES



Lounge



Restrooms



Conference room for  
22 around table



Bike Storage



Lockers



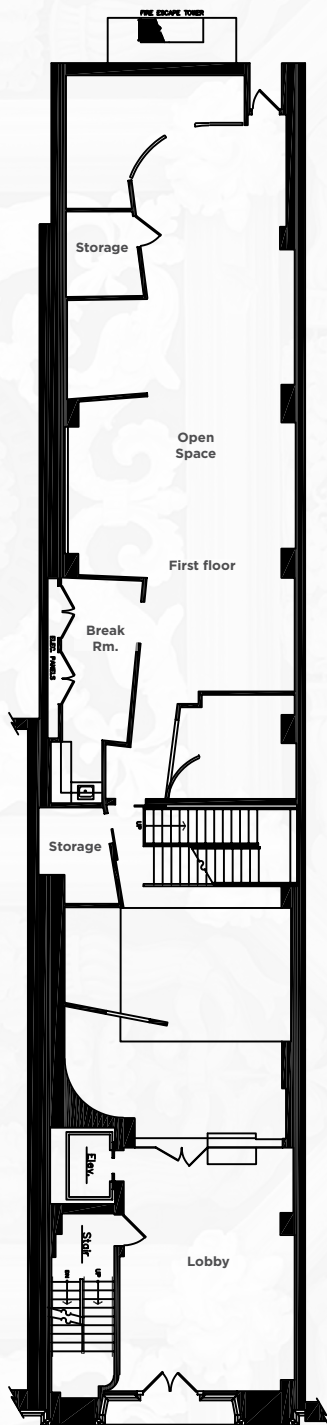
Mail Room



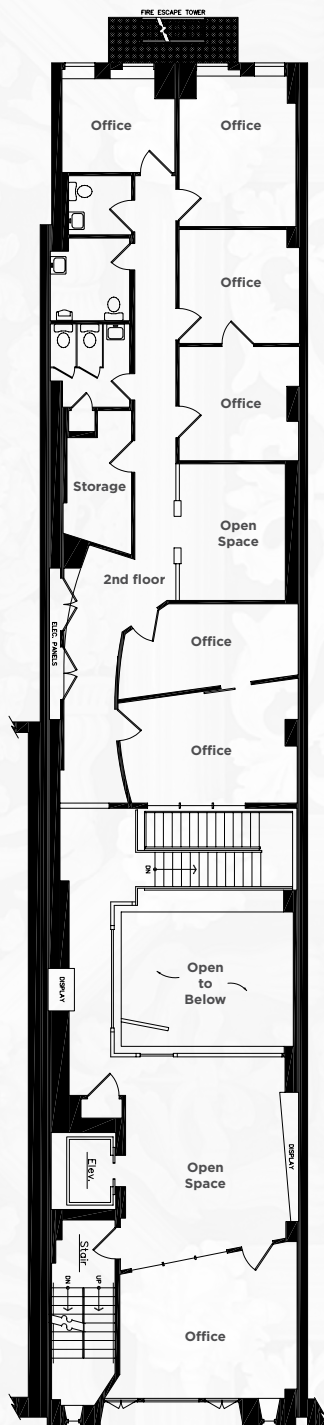
Shower

# FLOOR PLANS

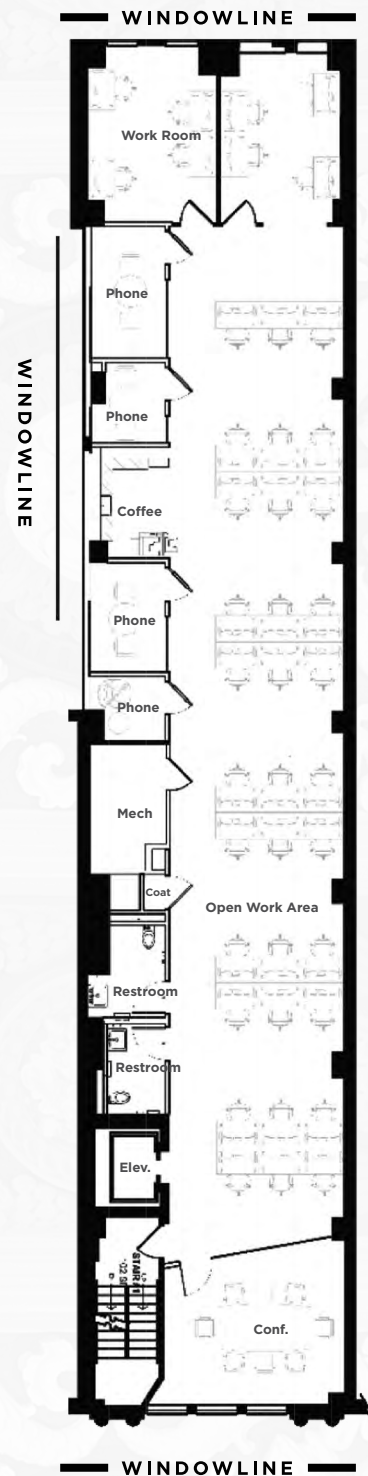
1st FLOOR



2nd FLOOR



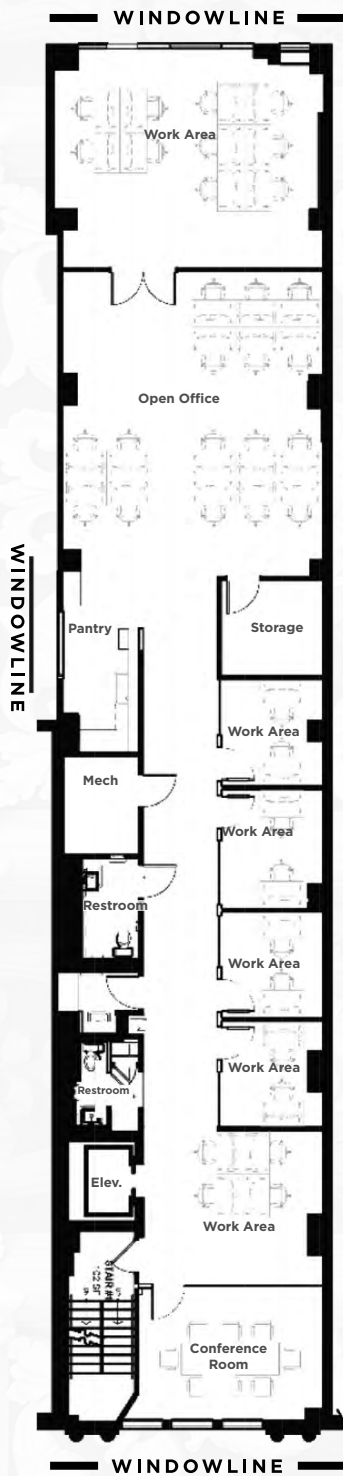
3rd FLOOR



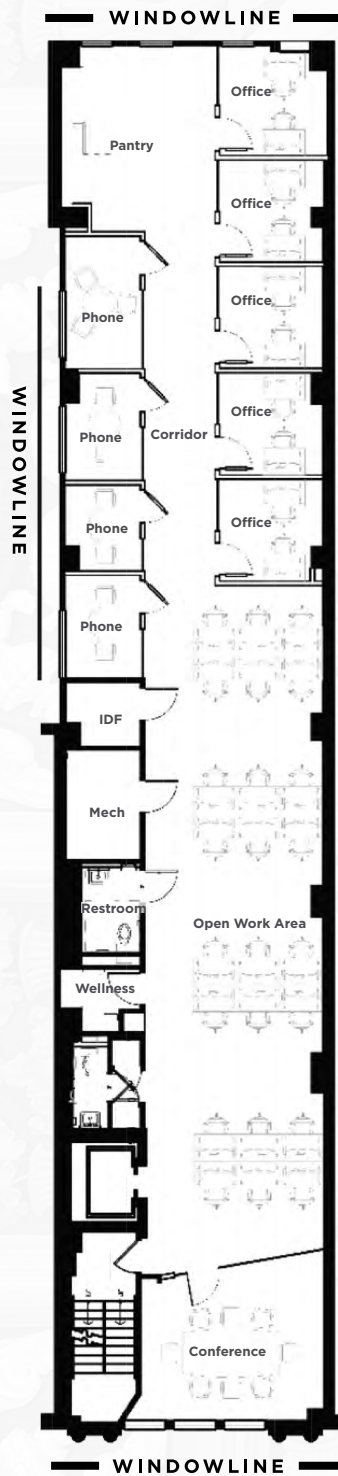


# FLOOR PLANS

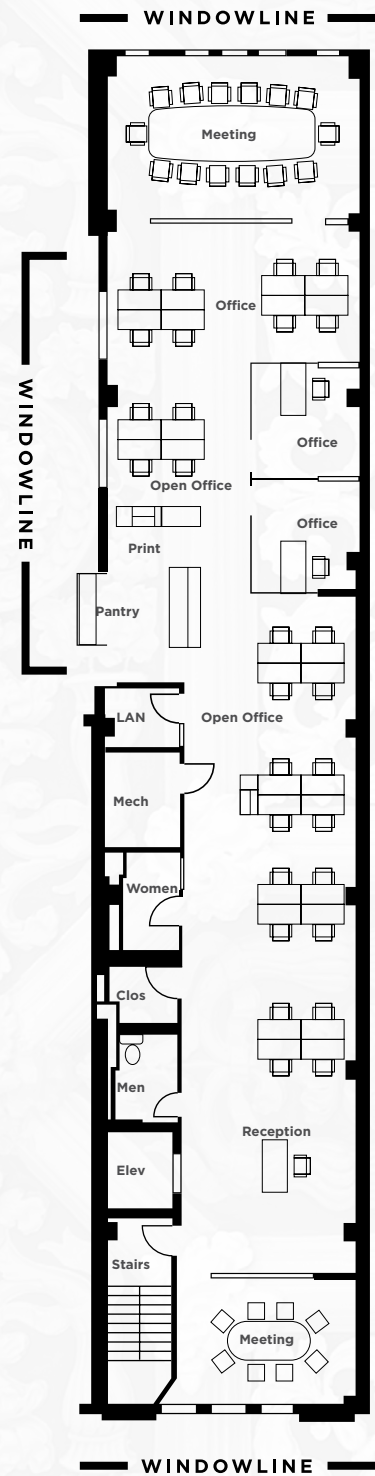
4th FLOOR



5th FLOOR

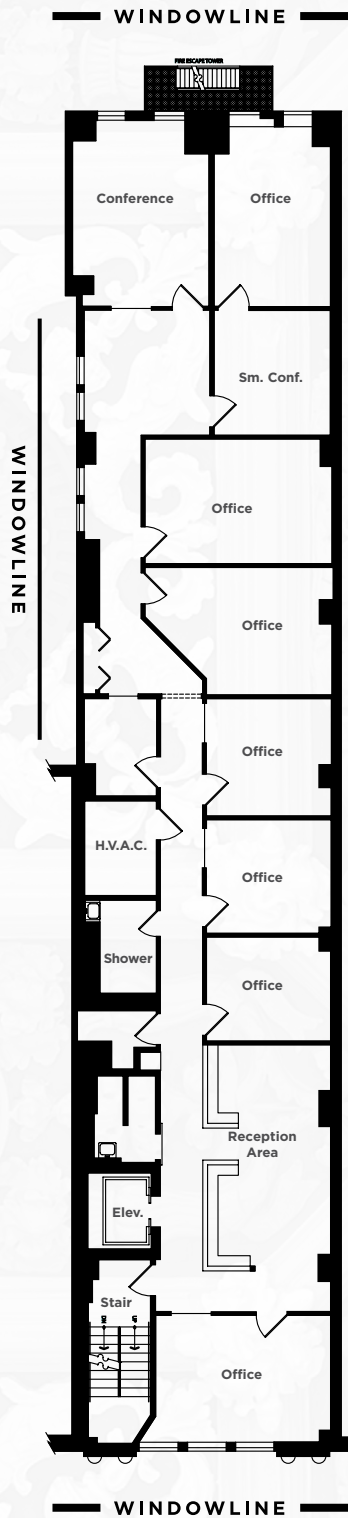


6th FLOOR

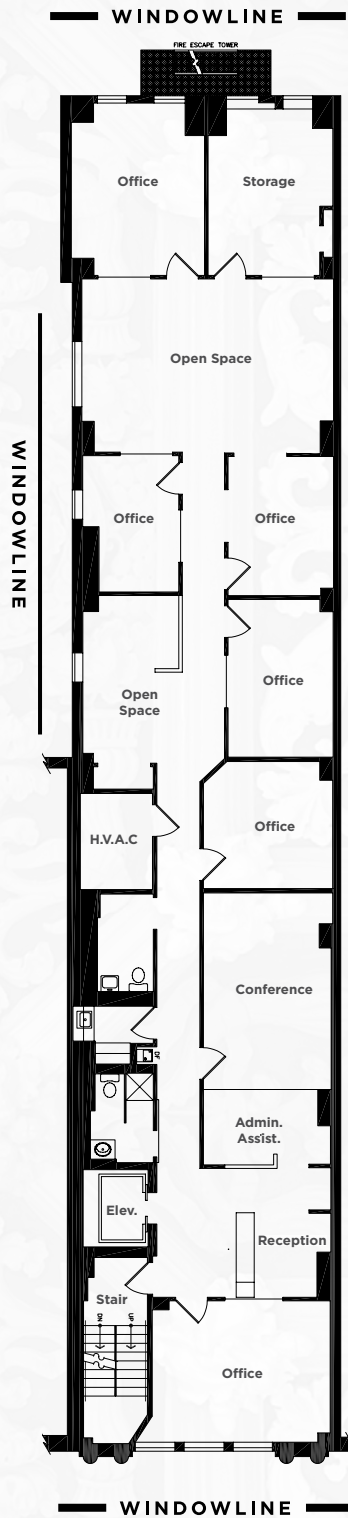


# FLOOR PLANS

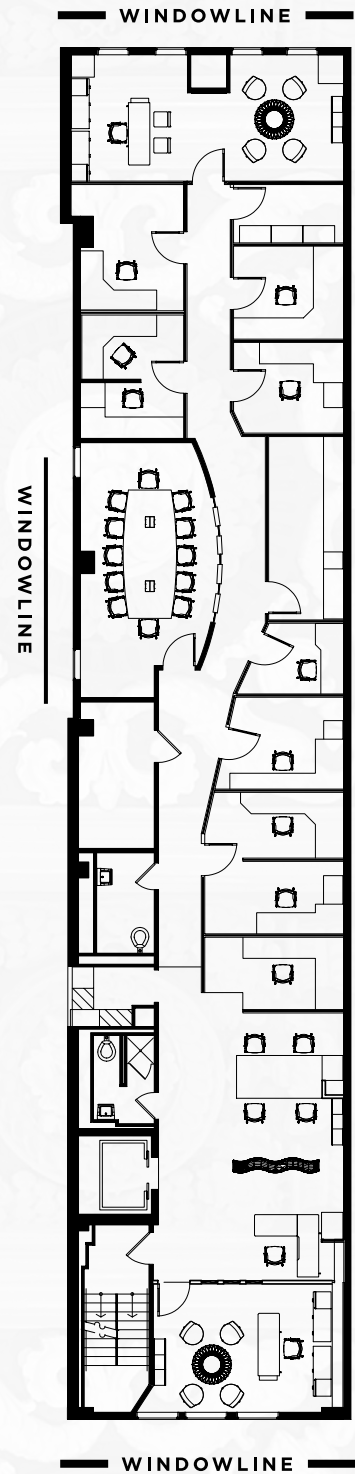
7th FLOOR



8th FLOOR



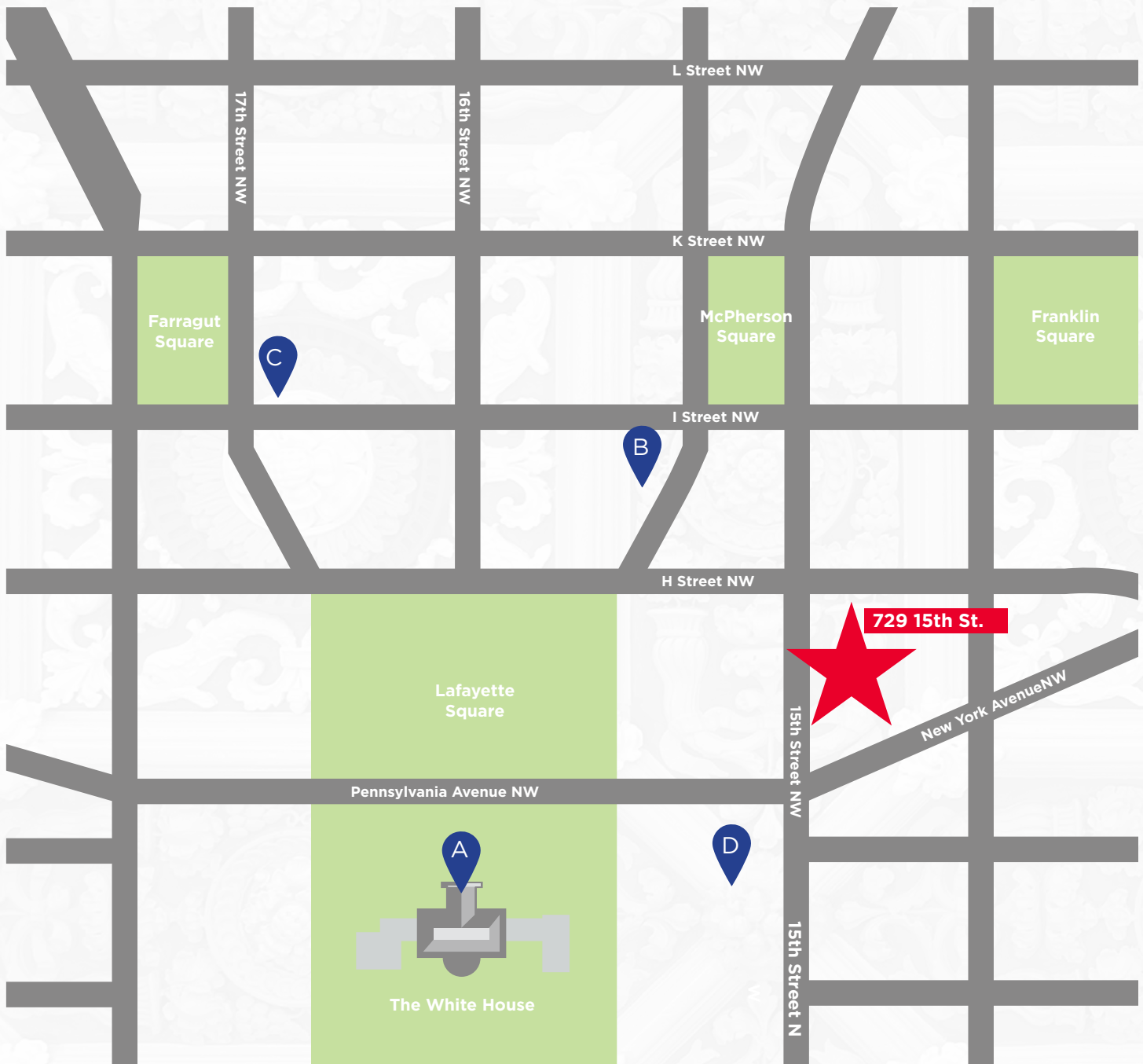
9th FLOOR





# LOCATION

The value of real estate is often described in terms of location. 729 15th Street's location is key; there are no other condominium ownership opportunities with proximity to the White House like this one.



## POINTS OF INTEREST

- A. White House
- B. Department of Veterans Affairs
- C. Army and Navy Club
- D. Department of the Treasury

# FOR PURCHASE INFORMATION, PLEASE CONTACT:

---

**GENE KENNEY**

202-739-0372

[eugene.kenney@cushwake.com](mailto:eugene.kenney@cushwake.com)

**AARON POMERANTZ**

202-280-6993

[aaron.pomerantz@cushwake.com](mailto:aaron.pomerantz@cushwake.com)

**MATTHEW GARCELL**

202-495-7004

[matt.garcell@cushwake.com](mailto:matt.garcell@cushwake.com)

©2022 Cushman & Wakefield. All rights reserved. The information contained in this communication is strictly confidential. This information has been obtained from sources believed to be reliable but has not been verified. NO WARRANTY OR REPRESENTATION, EXPRESS OR IMPLIED, IS MADE AS TO THE CONDITION OF THE PROPERTY (OR PROPERTIES) REFERENCED HEREIN OR AS TO THE ACCURACY OR COMPLETENESS OF THE INFORMATION CONTAINED HEREIN, AND SAME IS SUBMITTED SUBJECT TO ERRORS, OMISSIONS, CHANGE OF PRICE, RENTAL OR OTHER CONDITIONS, WITHDRAWAL WITHOUT NOTICE, AND TO ANY SPECIAL LISTING CONDITIONS IMPOSED BY THE PROPERTY OWNER(S). ANY PROJECTIONS, OPINIONS OR ESTIMATES ARE SUBJECT TO UNCERTAINTY AND DO NOT SIGNIFY CURRENT OR FUTURE PROPERTY PERFORMANCE

