

# Mill Creek Business Center C

10548 Lackman Rd  
Lenexa, KS 66219



# Property Overview

+±11,600 SF

+±2,550 SF office

+2 docks

+1 drive-in

+22' clear

+\$8.75 psf NNN

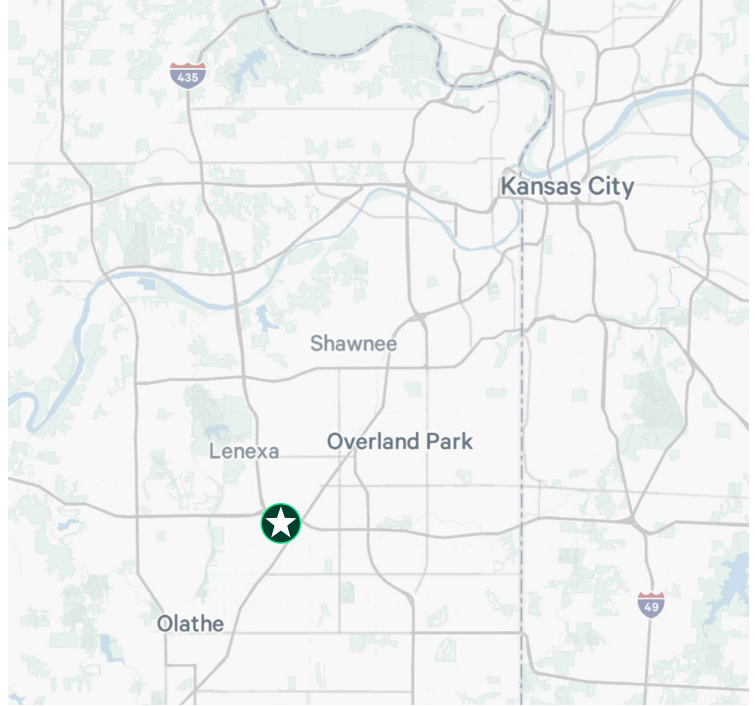
+Nets: Taxes: \$2.33 PSF

Insurance: \$0.24 PSF

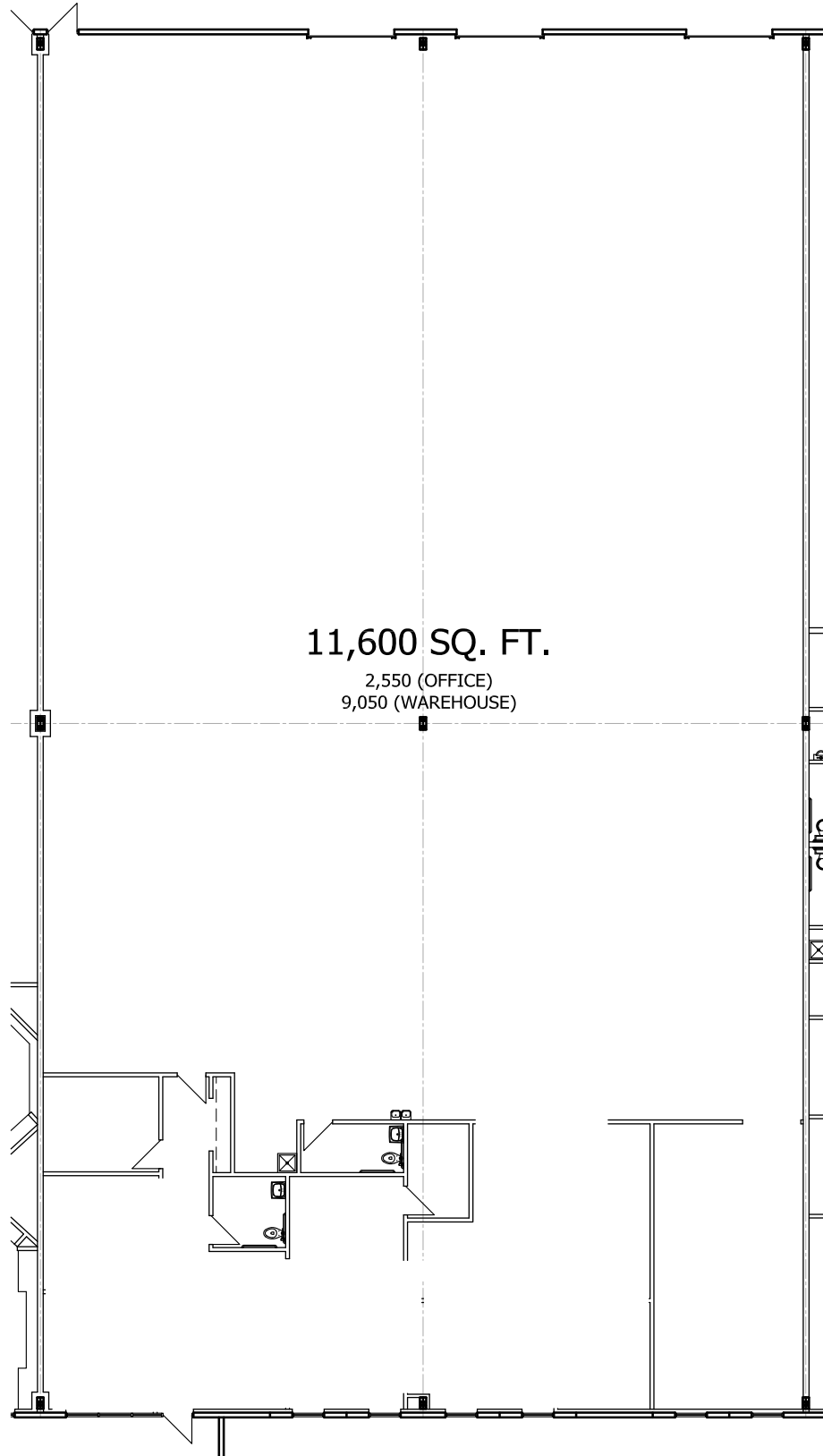
CAM: \$0.89 PSF

Total OPEX: \$3.45 PSF

+Available 1/1/27



# Floor Plan



# Aerial



**Mill Creek Business Center C**

## Contact Us

**Ben Whetstone**  
Senior Associate  
+1 816 968 5809  
ben.whetstone@cbre.com

**Austin Baier**  
Executive Vice President  
+1 816 968 5841  
austin.baier@cbre.com

© 2026 CBRE, Inc. All rights reserved. This information has been obtained from sources believed reliable, but has not been verified for accuracy or completeness. You should conduct a careful, independent investigation of the property and verify all information. Any reliance on this information is solely at your own risk. CBRE and the CBRE logo are service marks of CBRE, Inc. All other marks displayed on this document are the property of their respective owners, and the use of such logos does not imply any affiliation with or endorsement of CBRE. Photos herein are the property of their respective owners. Use of these images without the express written consent of the owner is prohibited.