

Commercial Leasing Office
2828 Pickett Rd, Suite 120
Durham, NC 27705
Ph: 919-484-1053
Fax: 919-484-1996
www.ticonproperties.com
brent@ticonproperties.com

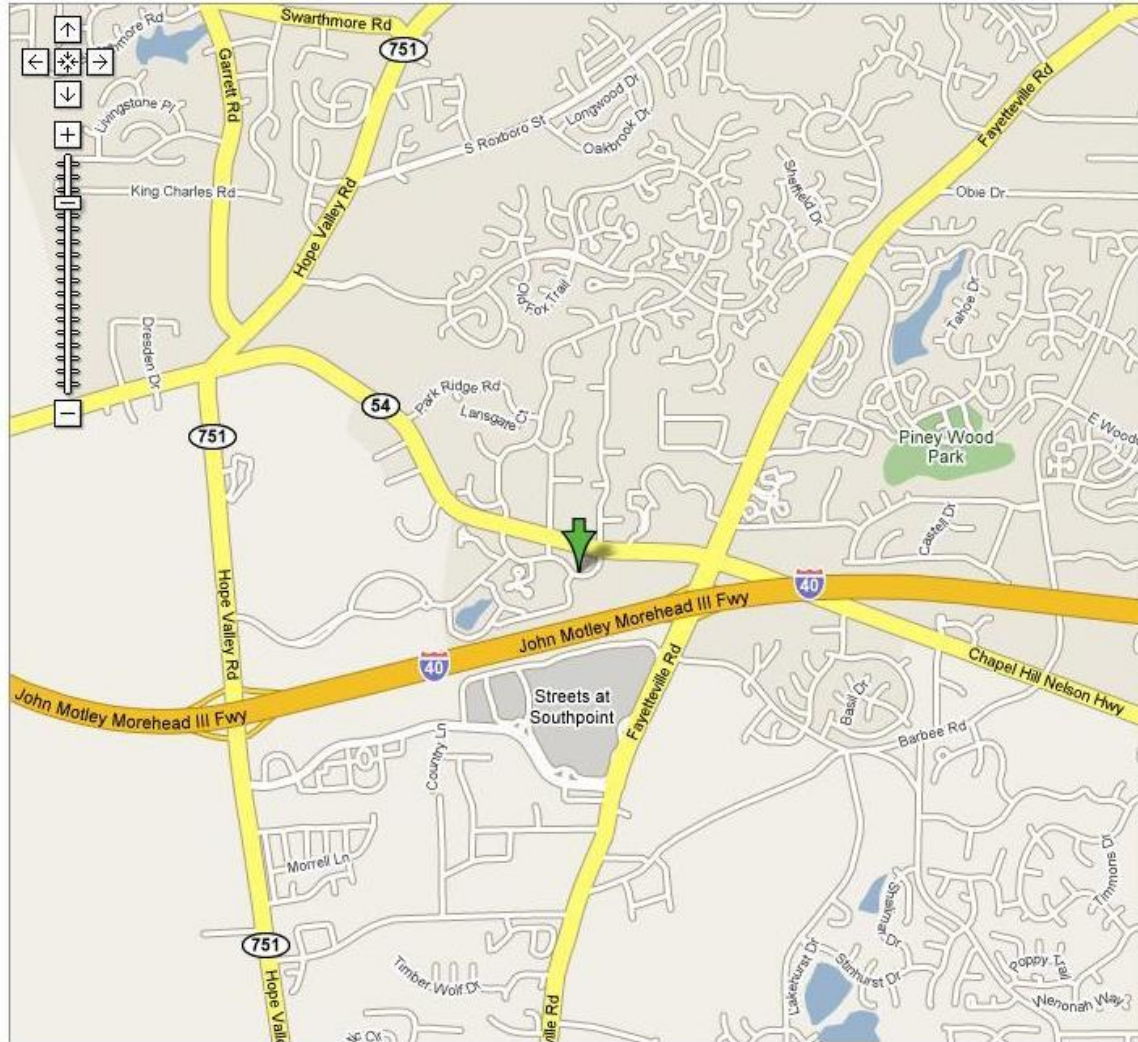


Highgate Centre Office Space available for Lease

- **First and Second Floor Office Space**
- **3 to 5 year lease term**
- **Tenant responsible for electricity, janitorial, phone/internet**
- **TICAM, Water/Sewer, Trash service is included**
- **3% annual rent escalations**
- **Personal guarantor with approved credit required**

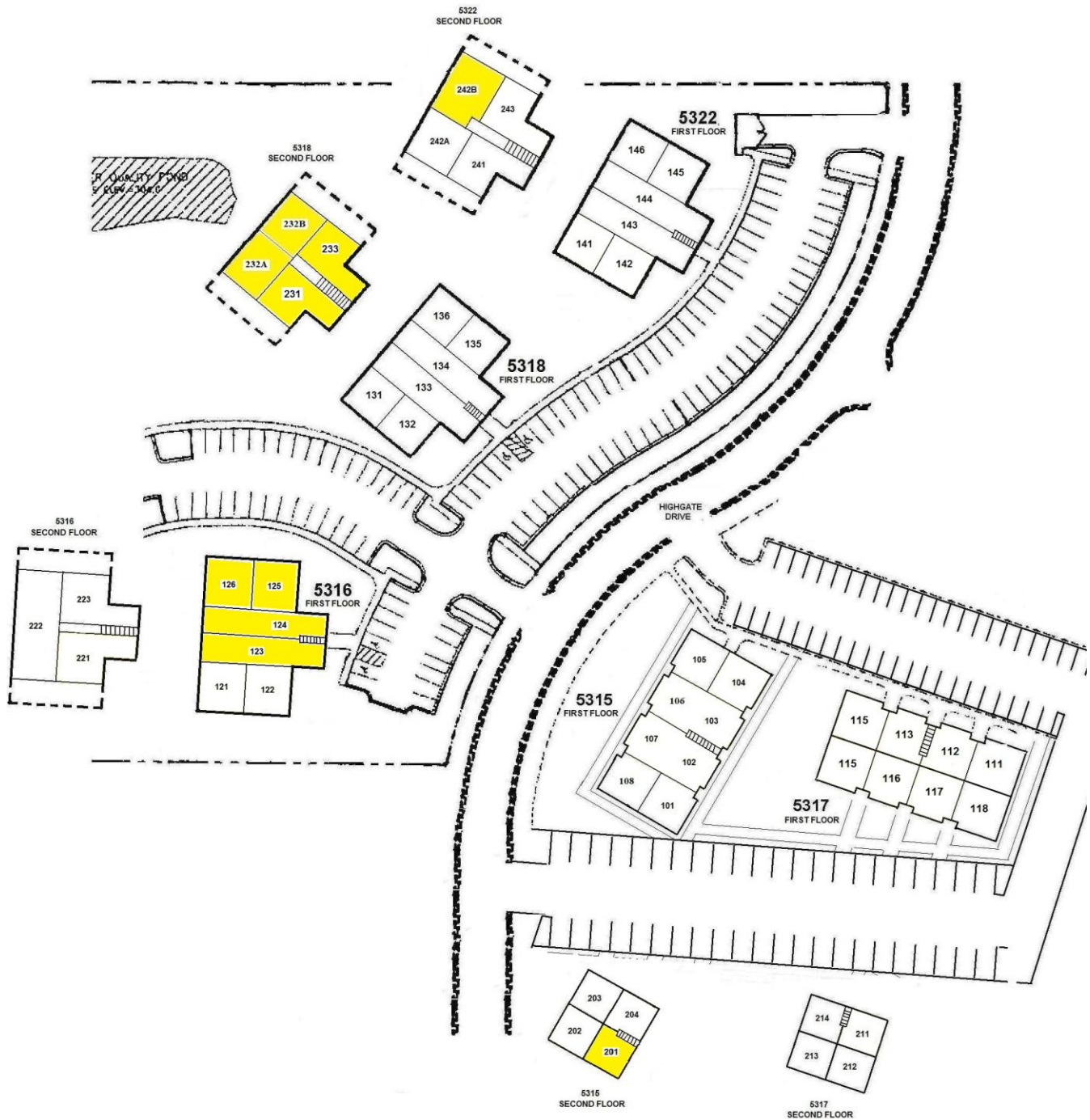
INFORMATION HEREIN IS SUBJECT TO VERIFICATION BY ALL PARTIES AND MAY CHANGE WITHOUT NOTICE. PLANS NOT TO SCALE; FOR GENERAL APPROXIMATION ONLY; SUBJECT TO CHANGE, REVISION, OMISSION AT ANY TIME.

Location:
5315, 5316, 5317, 5318 & 5322 High Gate Dr
Durham, NC 27713



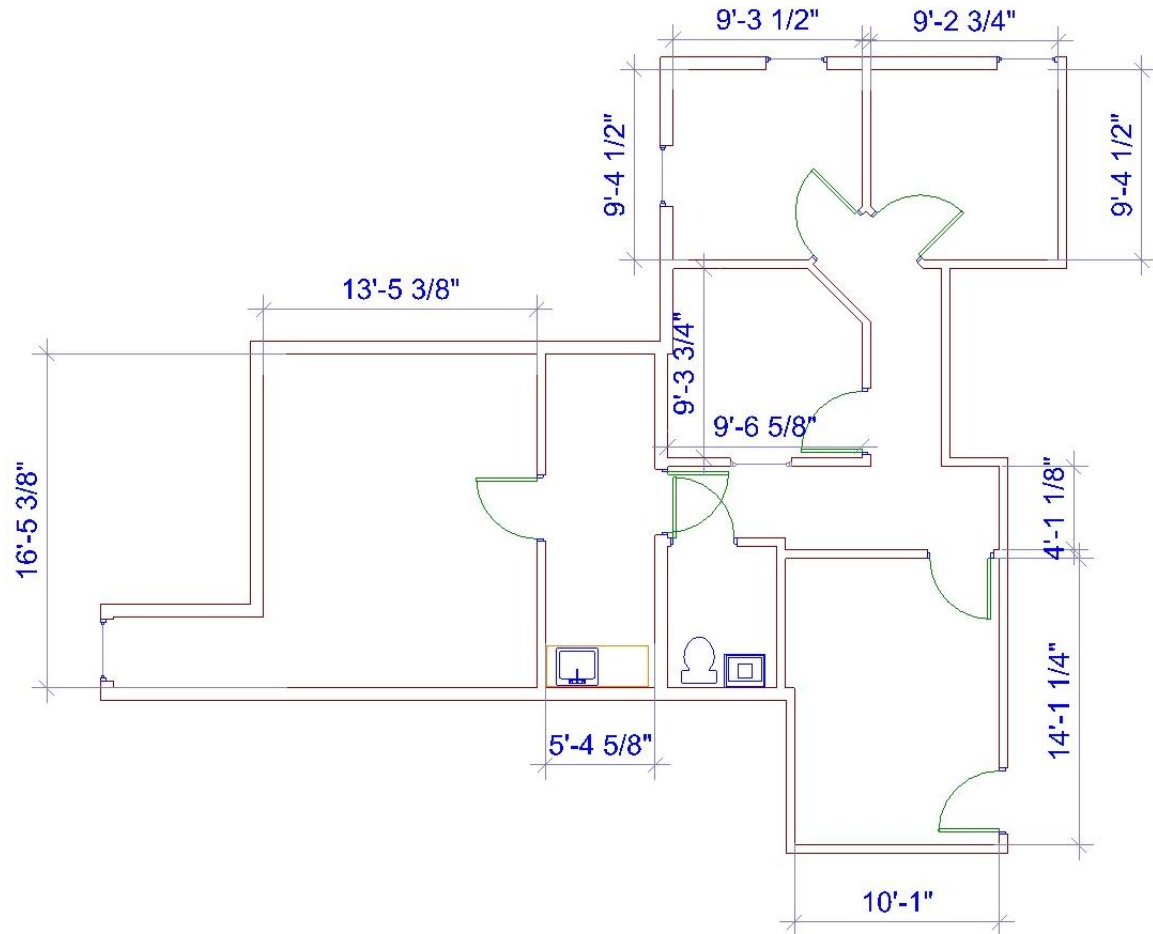
INFORMATION HEREIN IS SUBJECT TO VERIFICATION BY ALL PARTIES AND MAY CHANGE WITHOUT NOTICE. PLANS NOT TO SCALE; FOR GENERAL APPROXIMATION ONLY; SUBJECT TO CHANGE, REVISION, OMISSION AT ANY TIME.

Available space is highlighted



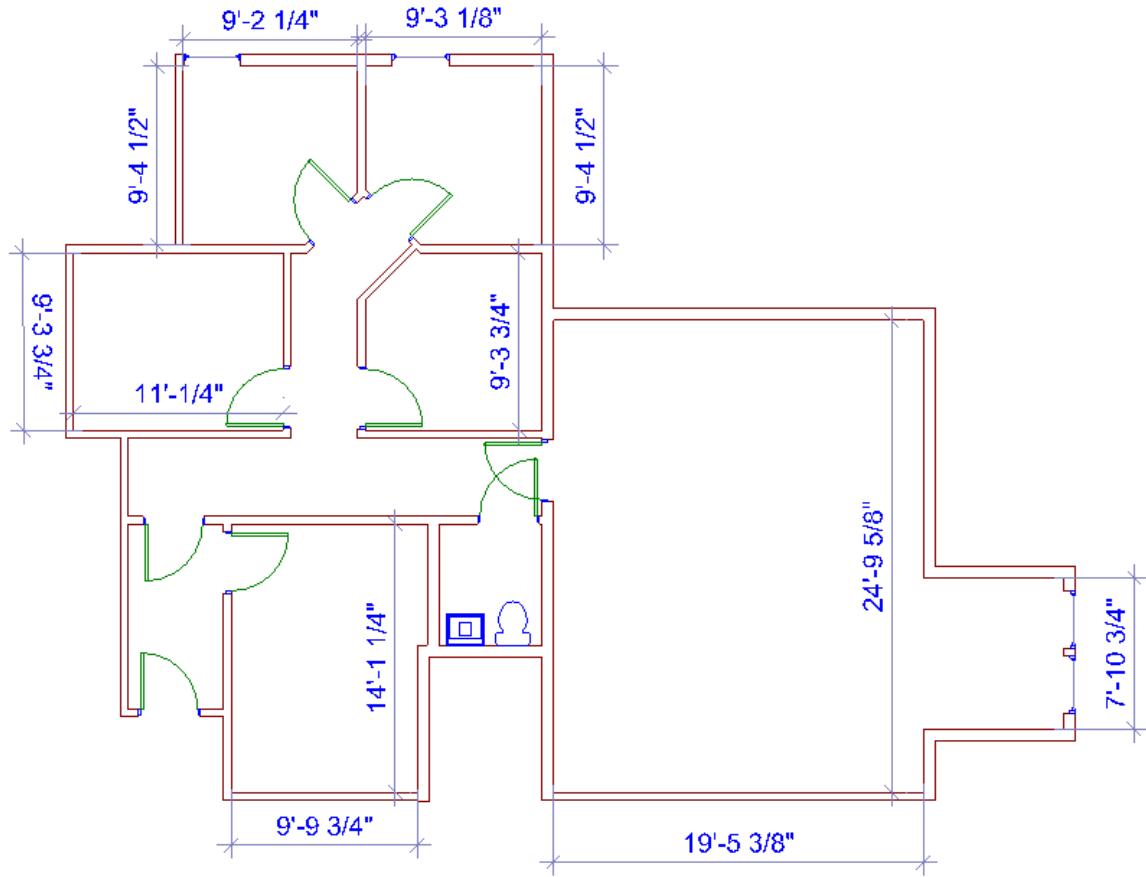
INFORMATION HEREIN IS SUBJECT TO VERIFICATION BY ALL PARTIES AND MAY CHANGE WITHOUT NOTICE. PLANS NOT TO SCALE; FOR GENERAL APPROXIMATION ONLY; SUBJECT TO CHANGE, REVISION, OMISSION AT ANY TIME.

Building 5318 Suite 232A
Approx 1,018 SF
\$16.00 PSF or \$1,357.33 / month
Second Floor Walk Up



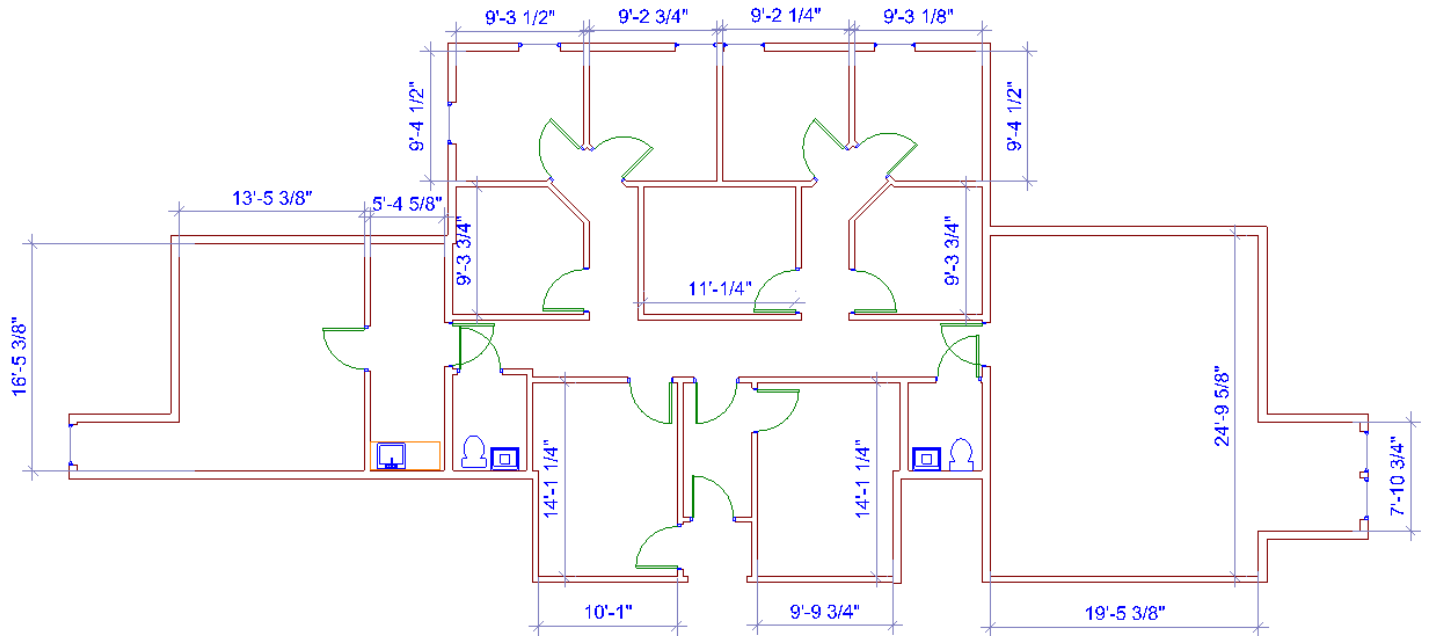
INFORMATION HEREIN IS SUBJECT TO VERIFICATION BY ALL PARTIES AND MAY CHANGE WITHOUT NOTICE. PLANS NOT TO SCALE; FOR GENERAL APPROXIMATION ONLY; SUBJECT TO CHANGE, REVISION, OMISSION AT ANY TIME.

Building 5318 Suite 232B
Approx 1,411 SF
\$16.00 PSF or \$1,881.33 / month
Second Floor Walk Up

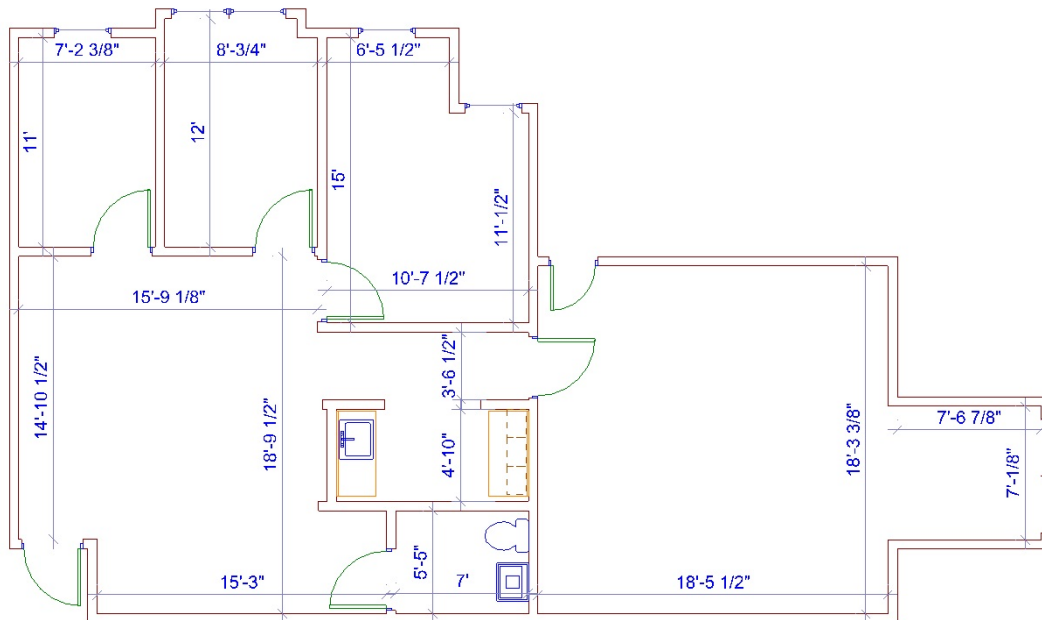


INFORMATION HEREIN IS SUBJECT TO VERIFICATION BY ALL PARTIES AND MAY CHANGE WITHOUT NOTICE. PLANS NOT TO SCALE; FOR GENERAL APPROXIMATION ONLY; SUBJECT TO CHANGE, REVISION, OMISSION AT ANY TIME.

Building 5318 Suites 232A and 232B
Approx 2,429 SF
\$15.00 PSF or \$3,036.25 / month
Second Floor Walk Up

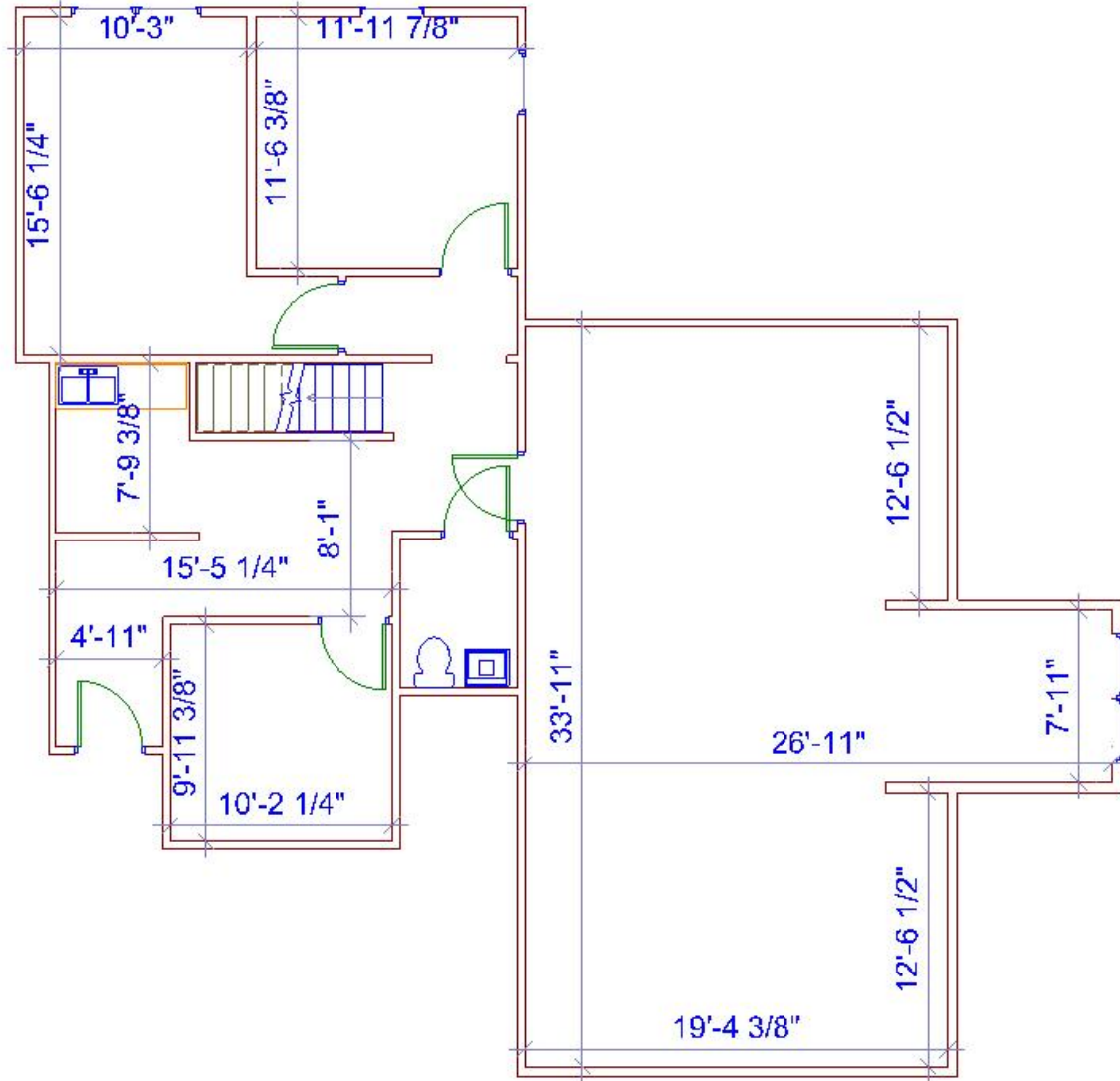


Building 5315 Suite 201
Approx 1,288 SF
\$16.00 PSF or \$1,717.33 / month
Second Floor Walk Up



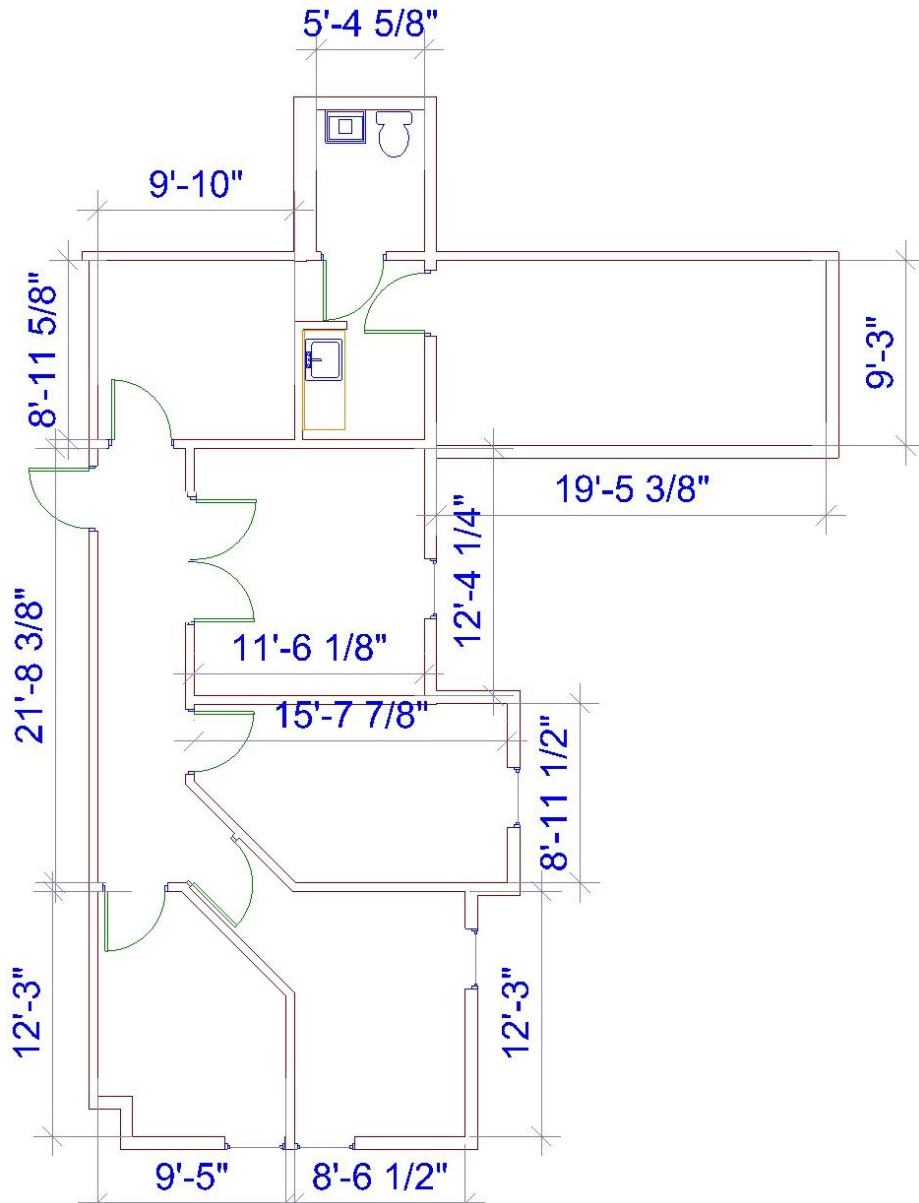
INFORMATION HEREIN IS SUBJECT TO VERIFICATION BY ALL PARTIES AND MAY CHANGE WITHOUT NOTICE. PLANS NOT TO SCALE; FOR GENERAL APPROXIMATION ONLY; SUBJECT TO CHANGE, REVISION, OMISSION AT ANY TIME.

Building 5322 Suite 242B
Approx 1,462 SF
\$16.00 PSF or \$1,949.33 / month
Second Floor Walk Up



INFORMATION HEREIN IS SUBJECT TO VERIFICATION BY ALL PARTIES AND MAY CHANGE WITHOUT NOTICE. PLANS NOT TO SCALE; FOR GENERAL APPROXIMATION ONLY; SUBJECT TO CHANGE, REVISION, OMISSION AT ANY TIME.

Building 5318 Suite 233
Approx 1,101 SF
\$16.00 PSF or \$1,468.00 / month
Second Floor Walk Up

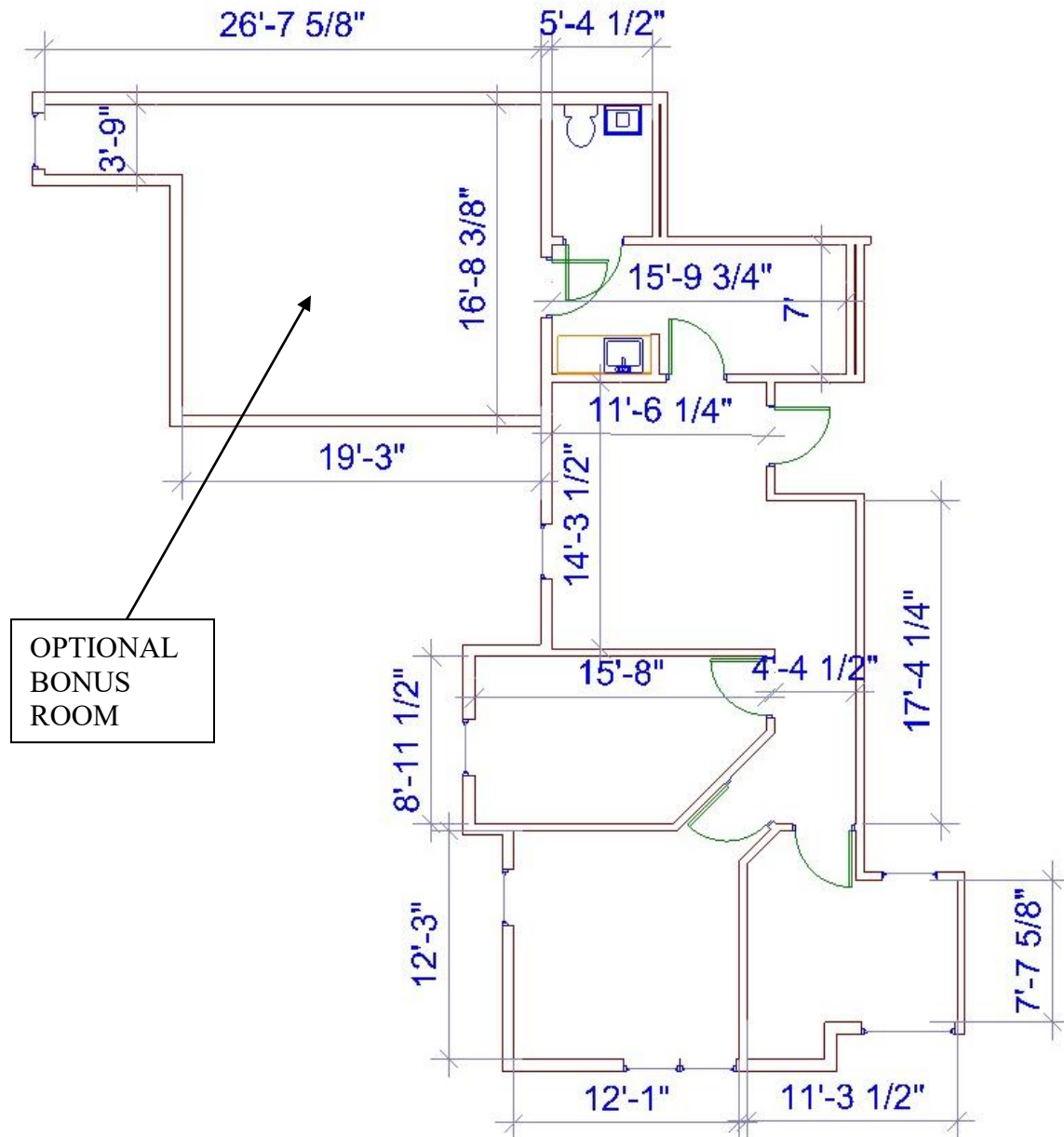


INFORMATION HEREIN IS SUBJECT TO VERIFICATION BY ALL PARTIES AND MAY CHANGE WITHOUT NOTICE. PLANS NOT TO SCALE; FOR GENERAL APPROXIMATION ONLY; SUBJECT TO CHANGE, REVISION, OMISSION AT ANY TIME.

Building 5318 Suite 231

Approx 1,301 SF with bonus room
\$16.00 PSF or \$1,734.67 / month

Approx 907 SF without bonus room
\$16.00 PSF or \$1,209.33 / month
Second Floor Walk Up



INFORMATION HEREIN IS SUBJECT TO VERIFICATION BY ALL PARTIES AND MAY CHANGE WITHOUT NOTICE. PLANS NOT TO SCALE; FOR GENERAL APPROXIMATION ONLY; SUBJECT TO CHANGE, REVISION, OMISSION AT ANY TIME.

Building 5316-123, 124, 125, 126

First Floor

Coming Soon!

INFORMATION HEREIN IS SUBJECT TO VERIFICATION BY ALL PARTIES AND MAY CHANGE WITHOUT NOTICE. PLANS NOT TO SCALE; FOR GENERAL APPROXIMATION ONLY; SUBJECT TO CHANGE, REVISION, OMISSION AT ANY TIME.