

MANUFACTURING FACILITIES

351 DEEDS AVE
DAYTON, OH 45404



Property Highlights:

Square Feet: 32,800 SF

Acreage: 3.3 Acres

- ✓ Sale Price: \$1,500,000
- ✓ 3 Building Site
- ✓ Clear Height: 17'-25'
- ✓ 2020 New Roof on Warehouse
- ✓ Large Secured Fenced Lot
- ✓ Bus Ducts
- ✓ Newly Renovated Office



Tim Echemann

Principal Broker

C: 937.658.4403

P: 937.492.4423

techemann@ipbindustrial.com

www.ipbindustrial.com



Conrad Echemann

Sales Associate

C: 937.658.4282

P: 937.492.4423

conrad@ipbindustrial.com

www.ipbindustrial.com

MANUFACTURING FACILITIES



351 DEEDS AVE
DAYTON, OH 45404

Land: 3.3 Acres

Manufacturing SF: 23,360SF

Office SF: 4,000 SF Air Conditioned

Maintenance Bldg. SF: 3,000 SF

Construction Type: Metal/Brick

Roof: Metal & Rubber

Power: 480 Volt 400 Amps III Phase

Year Built: 1960 & 1990

Lighting: LED

Utilities: City Water, Sewer, & Natural Gas

Zoning: I2: Heavy Industrial

Parcel Numbers: R72 05411 0001, R72 05411 0002, R72 05411 0004, R72 05411 0010, R72 05411 0011, R72 05411 0012, R72 05411 0013, R72 05411 0016 & R72 05411 00118

Annual Taxes: \$16,070



Scan for more info



Tim Echemann

Principal Broker

C: 937.658.4403

P: 937.492.4423

techemann@ipbindustrial.com

www.ipbindustrial.com



Conrad Echemann

Sales Associate

C: 937.658.4282

P: 937.492.4423

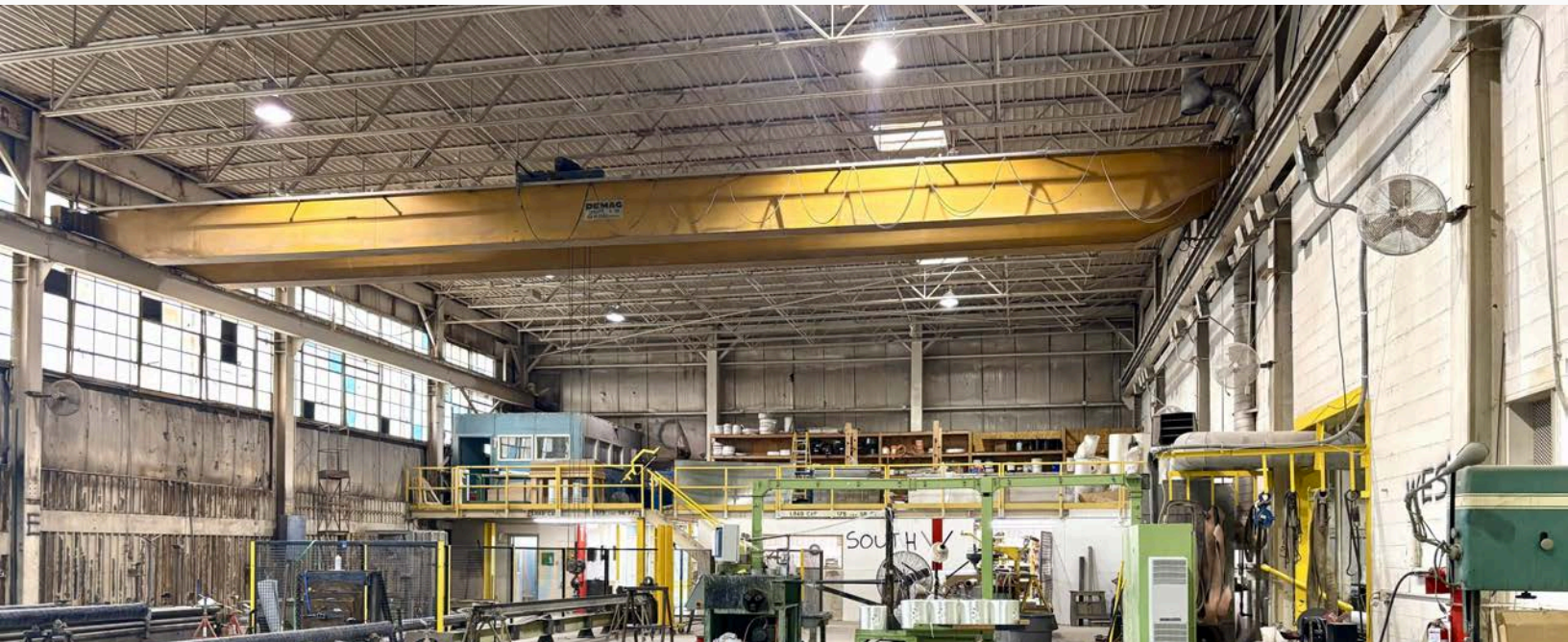
conrad@ipbindustrial.com

www.ipbindustrial.com

MANUFACTURING FACILITIES



351 DEEDS AVE
DAYTON, OH 45404



Tim Echemann

Principal Broker

C: 937.658.4403

P: 937.492.4423

techemann@ipbindustrial.com

www.ipbindustrial.com



Conrad Echemann

Sales Associate

C: 937.658.4282

P: 937.492.4423

conrad@ipbindustrial.com

www.ipbindustrial.com

ALL INFORMATION FURNISHED IS FROM SOURCES BELIEVED TO BE RELIABLE, AND IS SUBJECT TO ERROR, OMISSIONS, CHANGE OF TERMS AND CONDITIONS PRIOR TO SALE, LEASE, OR FINANCING, OR WITHDRAWAL

MANUFACTURING FACILITIES



351 DEEDS AVE
DAYTON, OH 45404



Tim Echemann

Principal Broker

C: 937.658.4403

P: 937.492.4423

techemann@ipbindustrial.com

www.ipbindustrial.com



Conrad Echemann

Sales Associate

C: 937.658.4282

P: 937.492.4423

conrad@ipbindustrial.com

www.ipbindustrial.com

ALL INFORMATION FURNISHED IS FROM SOURCES BELIEVED TO BE RELIABLE, AND IS SUBJECT TO ERROR, OMISSIONS, CHANGE OF TERMS AND CONDITIONS PRIOR TO SALE, LEASE, OR FINANCING, OR WITHDRAWAL