

BAYSIDE REALTY PARTNERS PRESENTS

# 391 Foster City Boulevard Foster City, California

*Light Industrial, Manufacturing, Distribution Space*



**TRASK LEONARD**  
President and CEO  
650.533.2591  
[tleonard@baysiderp.com](mailto:tleonard@baysiderp.com)  
DRE#01152101



**IAN CALVELLO**  
Senior Property Director  
650.282.4621  
[icalvello@baysiderp.com](mailto:icalvello@baysiderp.com)  
DRE#01713240



**JARDA BRYCH**  
Property Director  
650.517.2303  
[jbrych@baysiderp.com](mailto:jbrych@baysiderp.com)  
DRE#01974129



# 391 Foster City Boulevard

## Foster City, California

### LOCATION

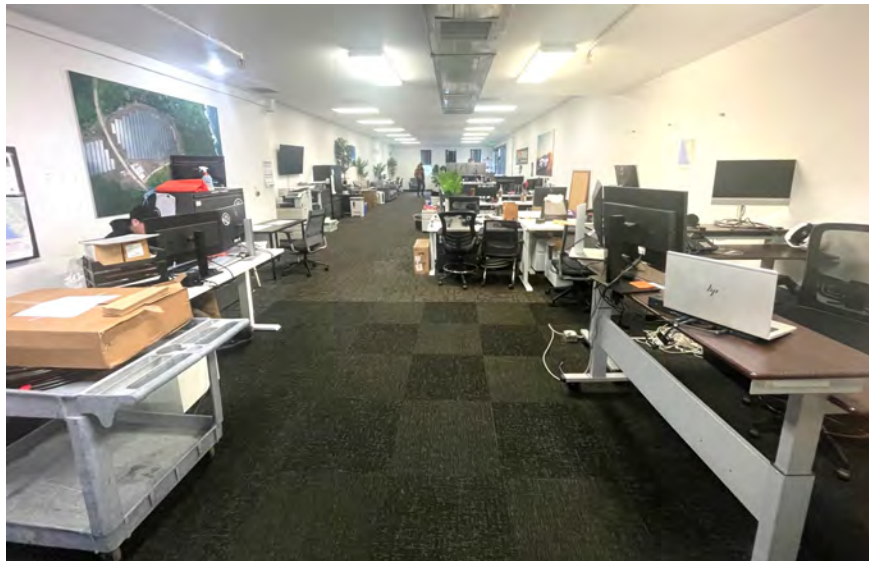
- Great location (access to both SR-92 and US-101) with ample parking ratio (2 per 1,000)
- 21,663 rsf on 1.36 acre lot



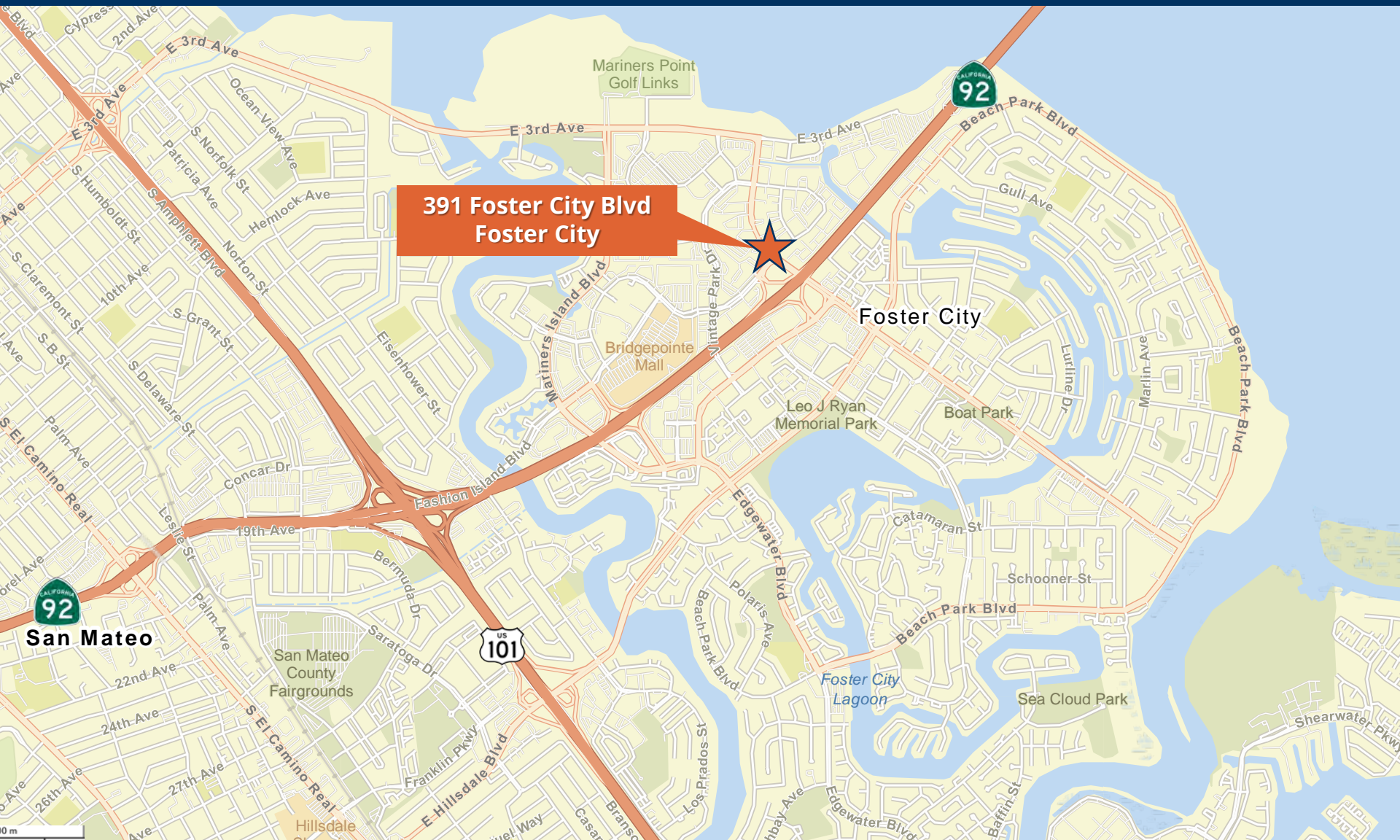
### BUILDING

- One-story industrial building with 22' clear-height ceilings
- Zoned for light industrial, manufacturing, distribution
- Split space
  - 19% existing office buildout
  - 81% warehouse space
- Five 14' X 14" grade-level roll-up doors
- Roll-up doors are drive thru
- 200 AMP  
120/480 V  
3-phase

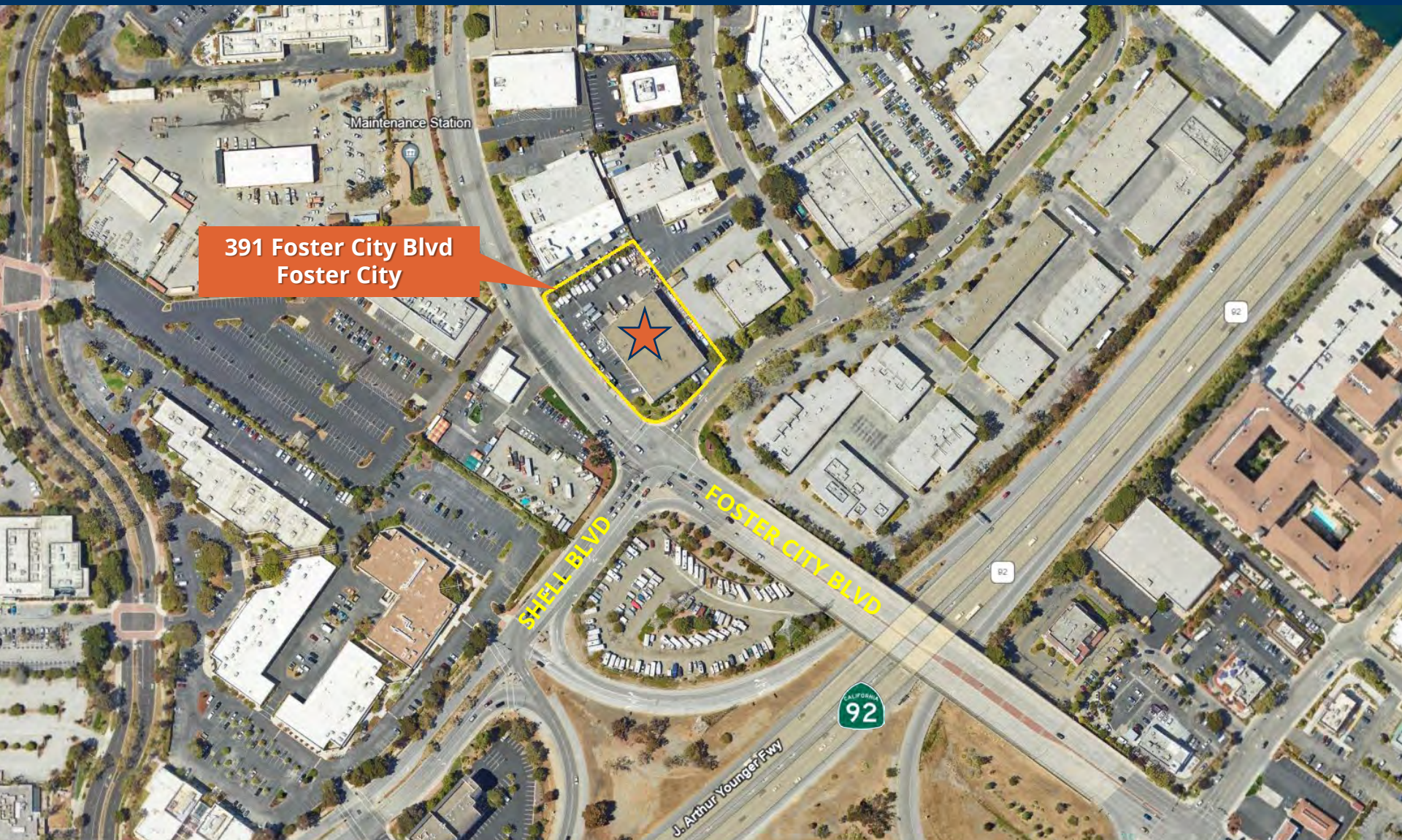
BAYSIDE REALTY PARTNERS PRESENTS  
**391 Foster City Boulevard**  
Foster City, California



# 391 Foster City Boulevard Foster City, California



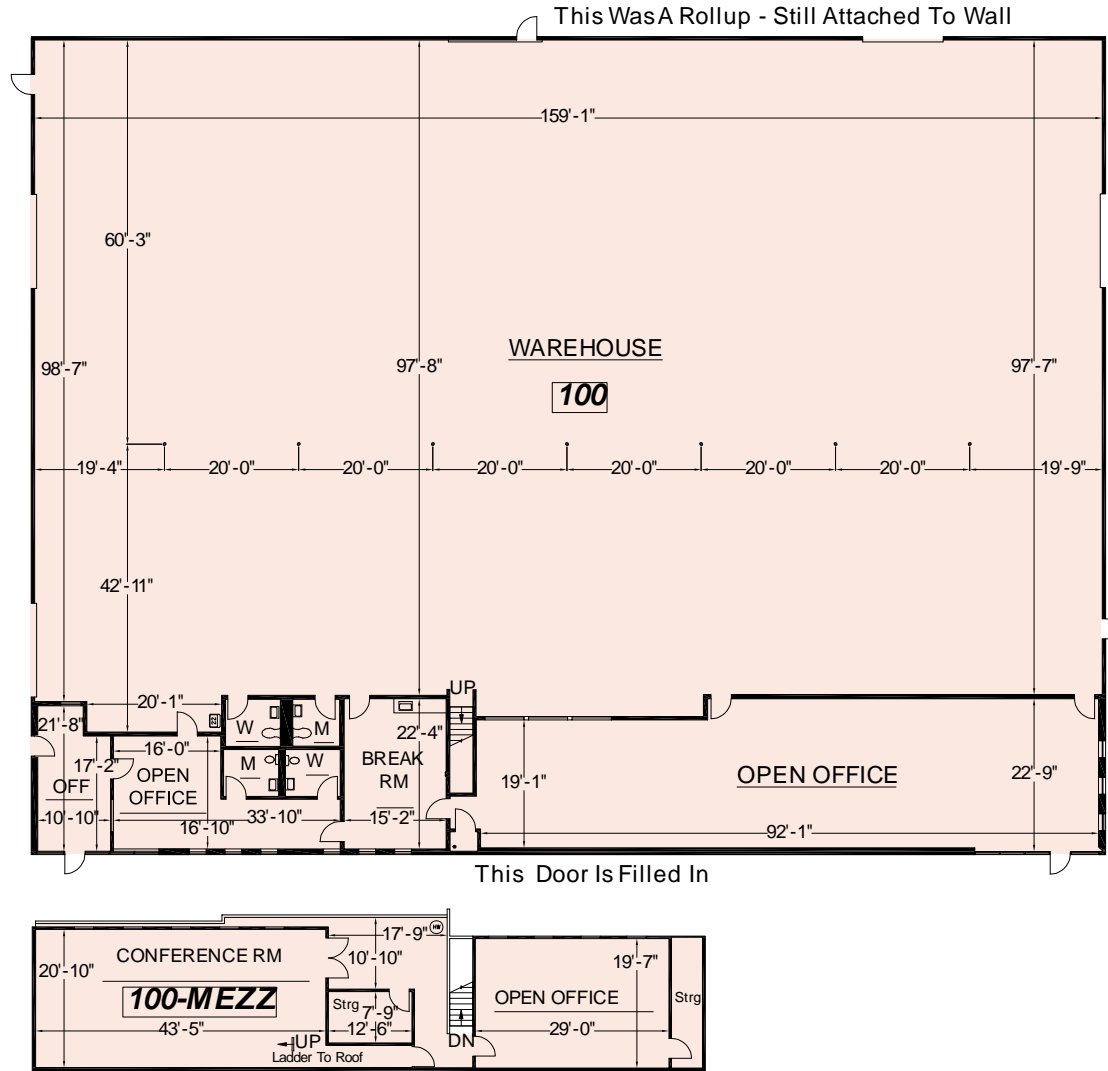
# 391 Foster City Boulevard Foster City, California



391 Foster City Blvd  
Foster City

# 391 Foster City Boulevard

## Foster City, California



# Meet Your Expert Team



TRASK LEONARD

President and CEO

650.533.2591

[tleonard@baysiderp.com](mailto:tleonard@baysiderp.com)

DRE#01152101



IAN CALVELLO

Senior Property Director

650.282.4621

[icalvello@baysiderp.com](mailto:icalvello@baysiderp.com)

DRE#01713240



JARDA BRYCH

Property Director

650.517.2303

[jbrych@baysiderp.com](mailto:jbrych@baysiderp.com)

DRE#01974129

**DOMINANT. EXPERT. INFLUENTIAL.**

# BAYSIDE REALTY PARTNERS

*The preeminent provider of management, leasing, construction management and accounting services for healthcare properties.*



## MARKET LEADER

- Leasing & Property Management
- Investment Sales
- Tenant Representation
- Construction Management
- Property Repositioning



## INFLUENTIAL NETWORK

- Institutional Investors
- Healthcare Systems and Healthcare Districts
- Physicians & Districts
- Private Investors



## DOMINANT FOOTPRINT

- 2 million SF leased & managed
  - 50+ MOB portfolio
  - 10,000-240,000 SF
  - 500,000 SF portfolio
- San Francisco's largest MOBs
- 950+ leases executed
- 500+ medical and dental tenants

**DOMINANT. EXPERT. INFLUENTIAL.**