

6 AC Land with 4,000 SF Warehouse



Presented By:
TD Texas Realty, LLC

17175 Highway 242, Conroe, TX 77302



6 AC Land with 4,000 SF Warehouse

17175 Highway 242, Conroe, TX 77302

Property Details

Price: \$1,670,000

- 6 AC Commercial Land with a 4,000 SF Warehouse (shell). Property is facing highway 242.
- 2-3 miles to many major chain stores and restaurants and many new residential communities.
- 8-9 miles to major Freeway I-45 and I-69/59.
- Road expansion on Highway 242.

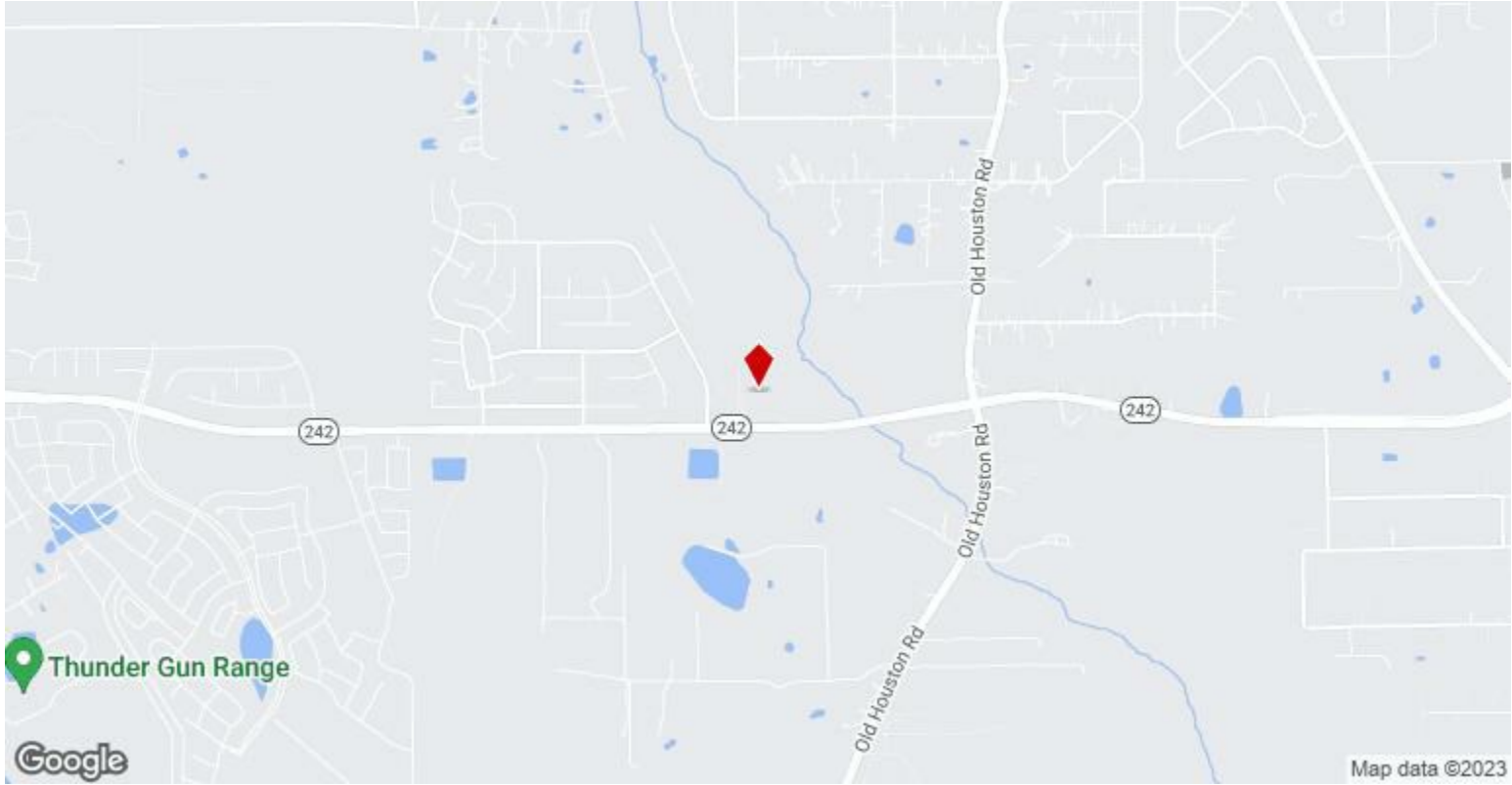
View the full listing here: <https://www.loopnet.com/Listing/17175-Highway-242-Conroe-TX/28844983/>

Price:	\$1,670,000
Property Type:	Retail
Sale Type:	Investment or Owner User
Gross Leasable Area:	4,000 SF
No. Stories:	1
Year Built:	2010
Clear Ceiling Height:	17 FT

6 AC Land with 4,000 SF Warehouse

17175 Highway 242, Conroe, TX 77302

Location



6 AC Land with 4,000 SF Warehouse

17175 Highway 242, Conroe, TX 77302

Property Photos



DJI_0570



17175 highway 242-11

6 AC Land with 4,000 SF Warehouse

17175 Highway 242, Conroe, TX 77302

Property Photos



17111 Highway 242-04



17175 highway 242-12

6 AC Land with 4,000 SF Warehouse

17175 Highway 242, Conroe, TX 77302

Property Photos



17175 highway 242-13



17175 highway 242-02

6 AC Land with 4,000 SF Warehouse

17175 Highway 242, Conroe, TX 77302

Property Photos



17175 highway 242-01



17175 highway 242-10

6 AC Land with 4,000 SF Warehouse

17175 Highway 242, Conroe, TX 77302

Property Photos



17175 highway 242-09



17175 highway 242-08

6 AC Land with 4,000 SF Warehouse

17175 Highway 242, Conroe, TX 77302

Property Photos



17175 highway 242-06



17175 highway 242-05

6 AC Land with 4,000 SF Warehouse

17175 Highway 242, Conroe, TX 77302

Property Photos



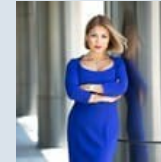
17175 highway 242-04



17175 highway 242-03

6 AC Land with 4,000 SF Warehouse

17175 Highway 242, Conroe, TX 77302



Tiffanie Diep

tiff@tdtexasrealty.com

(713) 775-7958 Ext: 1

TD Texas Realty, LLC

10700 Richmond Ave, Suite
273

Houston, TX 77042

