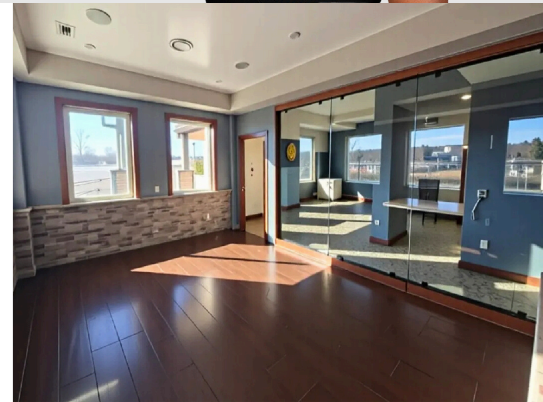




1208 EAGLERIDGE BLVD. SUITE D, PUEBLO CO 81008

Approx. 5,500 SF • Private Entrance • 22 Dedicated Parking Spaces



Key Features:

- Separate front entrance
- Reception Area: Large front reception desk with room for two receptionists.
- Conference Room: Spacious front conference room with windows overlooking the parking lot, and natural wood flooring
- Offices:
 - 3 front offices
 - 2 double/quad offices
 - (flexible – can convert to additional conference rooms or divide into smaller spaces)
- Offices (cont.)
 - 2 Smaller angled offices
 - 4 back/separate offices
 - Dedicated IT office
- Additional Amenities: Kitchen, tech space, 3 fax/copier areas, and two individual bathrooms.
- Storage & Utility: 2 large storage spaces connected to IT and utility areas.
- Furnishings: Multiple built-in L-shaped desks available to the next tenant, if desired.
- Flooring: Ceramic tile throughout main areas and hallways, carpet in offices.



Possible renovations are available to customize the space to your business needs. Imagine transforming this into your ideal headquarters – the flexible design supports growth and adaptability. For more information, to schedule a walkthrough tour, or to discuss lease terms, contact: