



6,138 SF
AVAILABLE FOR LEASE

11450 PAGEMILL ROAD

DALLAS, TEXAS 75243

PROPERTY HIGHLIGHTS

- Total Building SF: 56,219 SF
- Vacancy SF: 6,138 SF
- Clear Height: 20'
- Parking Ratio: .66/1,000
- Year of Construction: 1981



CONTACT

Josh Barnes

972.280.8353

jbarnes@holtlunsford.com

Weston Porter

214.442.8933

wporter@holtlunsford.com

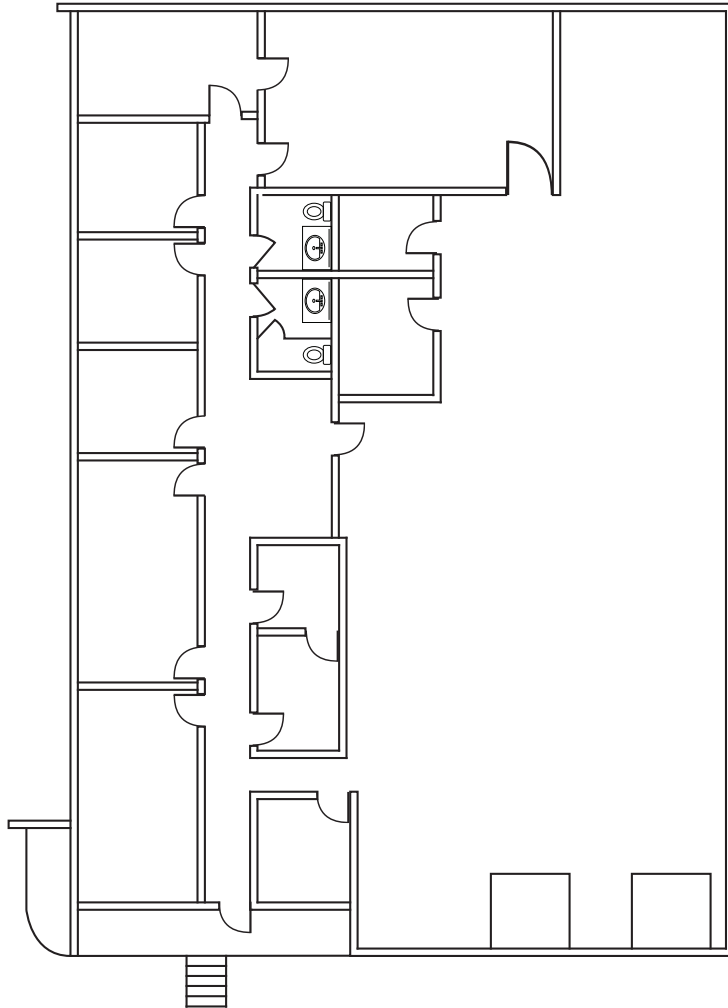


This information is deemed reliable, however Holt Lunsford Commercial makes no guarantees, warranties or representation as to the completeness or accuracy thereof.

11450 PAGEMILL ROAD

DALLAS, TEXAS 75243

FLOOR PLAN



SUITE INFORMATION

- Total: 6,138 SF
- Office: 2,800 SF
- Two (2) Dock High Door
- Clear Height: 20'
- Available Now!

CONTACT

Josh Barnes

972.280.8353

jbarnes@holtlunsford.com

Weston Porter

214.442.8933

wporter@holtlunsford.com



This information is deemed reliable, however Holt Lunsford Commercial makes no guarantees, warranties or representation as to the completeness or accuracy thereof.

