

2 EAST ELEVATION

SCALE: 1/8" = 1'-0"



SterlingCRE
ADVISORS

Warehouse/ Workshop Condo For Sale

5901 West Harrier
Missoula, Montana
Up to ±8,207 SF | Flex Warehouse

Exclusively listed by:
Claire Matten, CCIM | SIOR
Claire@SterlingCREadvisors.com
406.360.3102

Opportunity Overview

SterlingCRE Advisors is pleased to present a 5901 West Harrier, a flex warehouse opportunity situated ±0.60 miles from the Interstate 90 Interchange in Missoula's Development Park. The subject property shares ±3.81 acres of secured yard and a dedicated parking lot with neighboring industrial and lab users. The industrial center features dual paved ingress/egress for truck circulation.

Planned construction includes ±8,207 square feet of demisable (down to ±2,848 square feet) warehouse floor with three 12'x14' grade level over head doors, 20' clear height, full fire suppression and 3-phase power. The subject property is constructed with precast concrete walls and lower panel pre-finished metal siding for a polished exterior facade.

The site has light industrial zoning (City of Missoula, M1-2), access to all utilities.

A member of the ownership group is a licensed real estate broker in the state of Montana.

Interactive Links

 [Link to Listing](#)

 [Street View](#)

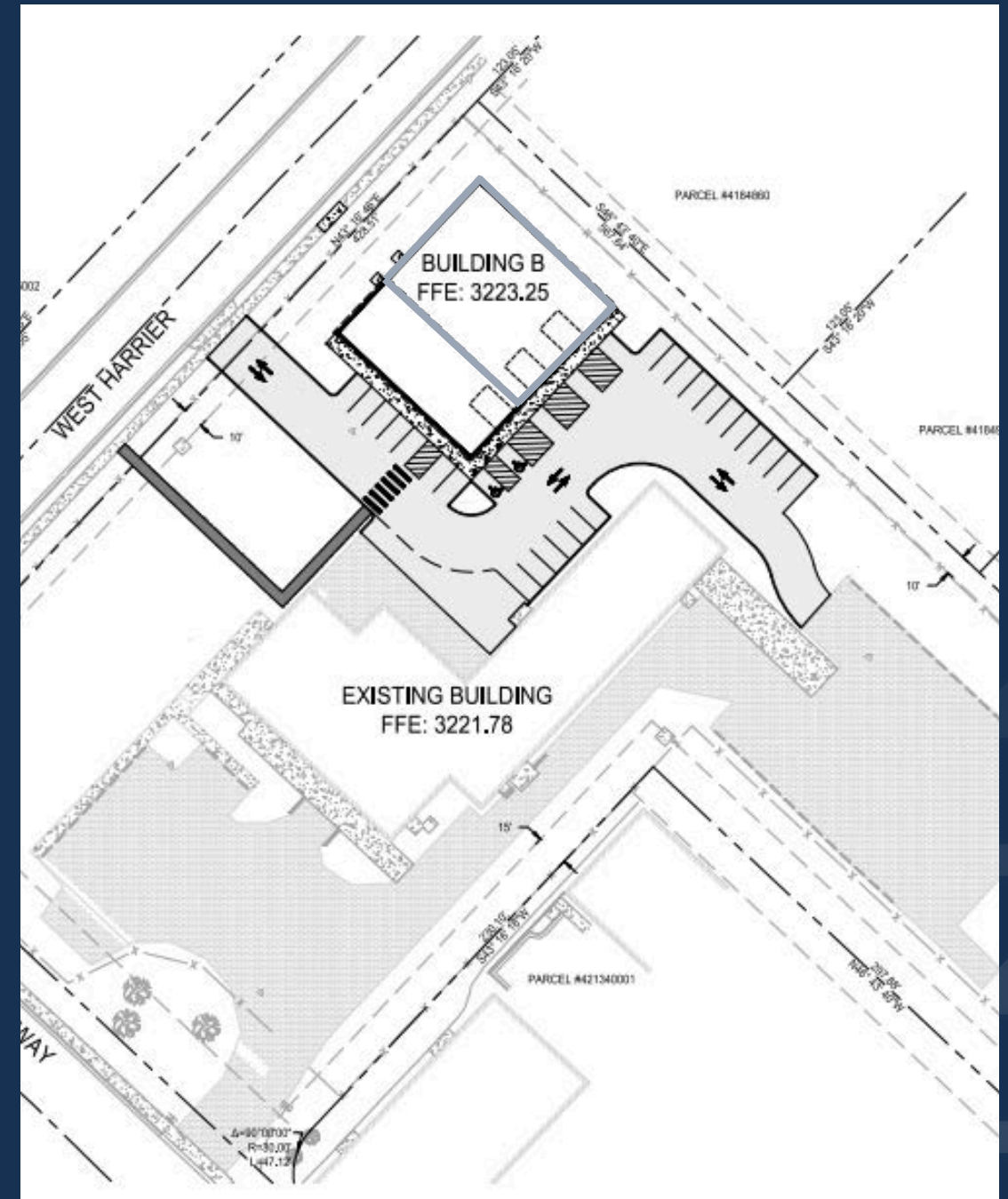
Address	5901 West Harrier Suite A Missoula, Montana 59808
Purchase Price	\$1,286,160
Property Type	Industrial Condominium
Total Acreage	Acreage: ±3.81 acres (±165,964 SF)
Building Size	±5,359 SF
Price Per Square Foot	\$240/SF

Address	5901 West Harrier Suite B, Missoula, Montana 59808
Purchase Price	\$683,520
Property Type	Industrial Condominium
Total Acreage	Acreage: ±3.81 acres (±165,964 SF)
Building Size	±2,848 SF
Price Per Square Foot	\$240/SF

5901 West Harrier Suite A

List Price: \$1,286,160

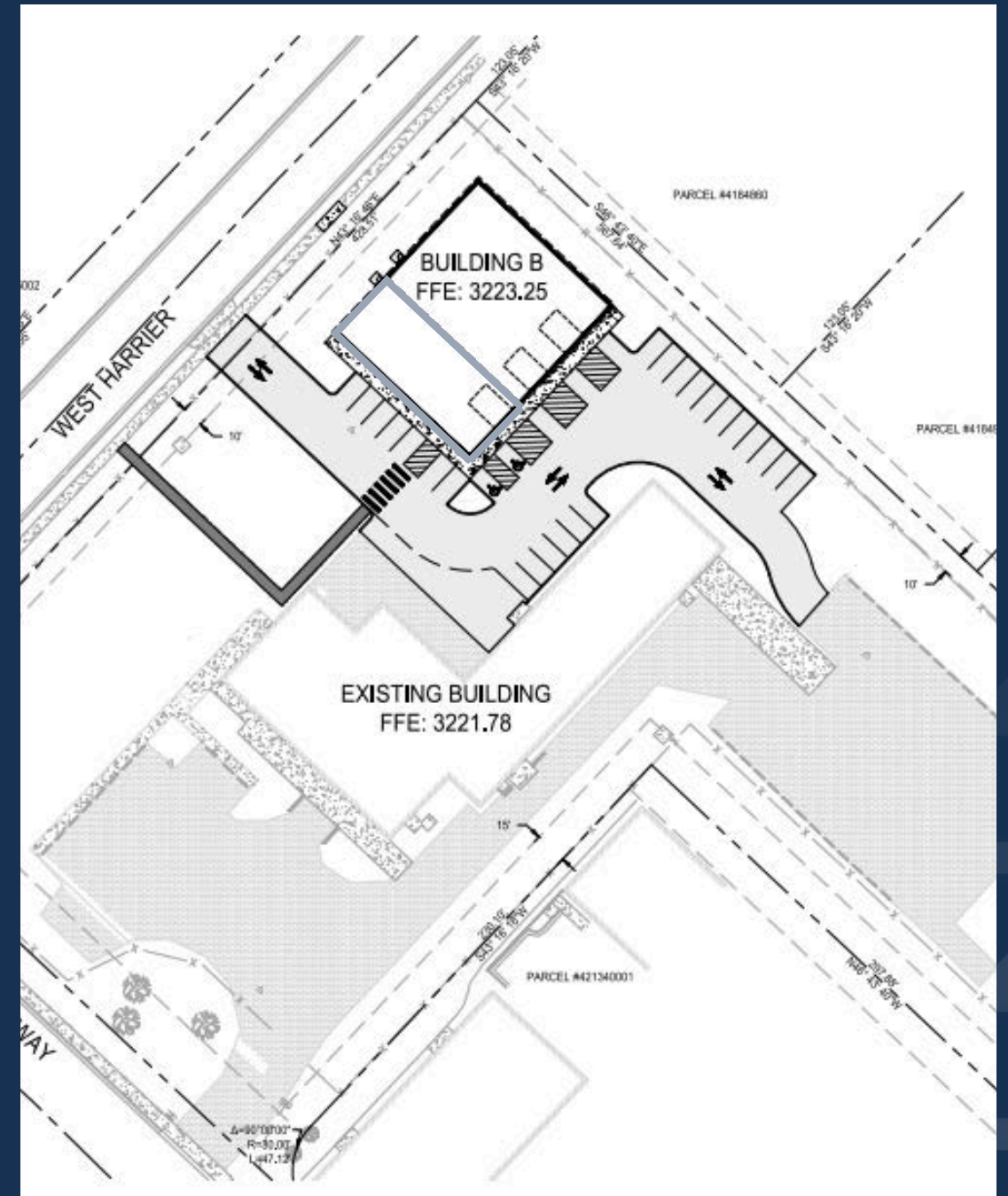
Total Building SF	±5,359 SF
Geocode	04-2200-05-2-02-07-0000
Year Built	Slated for Spring 2025
Zoning	Limited Industrial (M1-2)
Access	West Harrier via Expressway
Services	City water and sewer
Taxes	TBD
Parking	±30 shared parking spaces within a secured yard
Traffic Count	±6,351 (AADT 2023)
Interstate Proximity	±0.60 miles from I-90 Interchange



5901 West Harrier Suite B

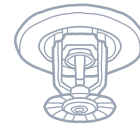
List Price: \$683,520

Total Building SF	±2,848 SF
Geocode	04-2200-05-2-02-07-0000
Year Built	Slated for Spring 2025
Zoning	Limited Industrial (M1-2)
Access	West Harrier via Expressway
Services	City water and sewer
Taxes	TBD
Parking	±30 shared parking spaces within a secured yard
Traffic Count	±6,351 (AADT 2023)
Interstate Proximity	±0.60 miles from I-90 Interchange





Situated ± 0.60 miles from the Interstate 90 Interchange in Missoula's Development Park



Equipped with 3-Phase power and full fire suppression



Light industrial commercial (M1-2) zoning



Ample parking with ± 30 parking spaces within a secured yard



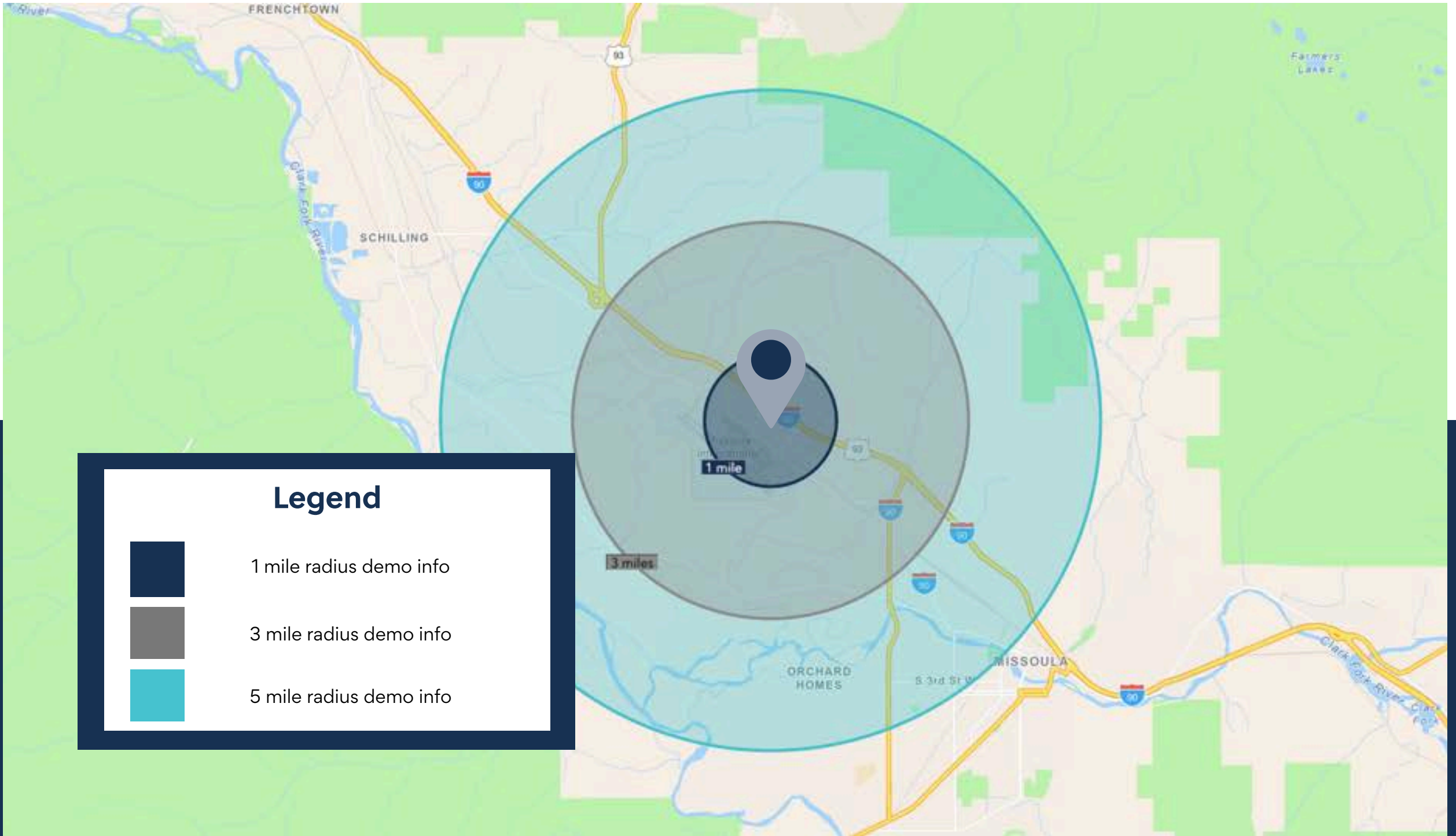
20' clear height with three 12'x14' grade level loading doors

LOCATION



SterlingCRE
ADVISORS





Legend



1 mile radius demo info



3 mile radius demo info



5 mile radius demo info

KEY FACTS

3 miles

14,720

Population



Median Age



Average Household Size

\$79,202

Median Household Income

3,820

2023 Owner Occupied Housing Units (Esri)

2,730

2023 Renter Occupied Housing Units (Esri)

BUSINESS

3 miles



846

Total Businesses



12,292

Total Employees

HOUSING STATS

3 miles



\$472,003

Median Home Value



\$11,651

Average Spent on Mortgage & Basics



\$1,122

Median Contract Rent

2024 Households by income (Esri)

3 miles

The largest group: \$100,000 - \$149,999 (20.6%)

The smallest group: \$25,000 - \$34,999 (4.9%)

Indicator ▲	Value	Diff
<\$15,000	5.2%	-2.0%
\$15,000 - \$24,999	5.6%	-1.3%
\$25,000 - \$34,999	4.9%	-1.7%
\$35,000 - \$49,999	20.1%	+5.0%
\$50,000 - \$74,999	10.5%	-5.0%
\$75,000 - \$99,999	16.4%	-0.4%
\$100,000 - \$149,999	20.6%	+4.5%
\$150,000 - \$199,999	7.2%	+0.4%
\$200,000+	9.3%	+0.3%

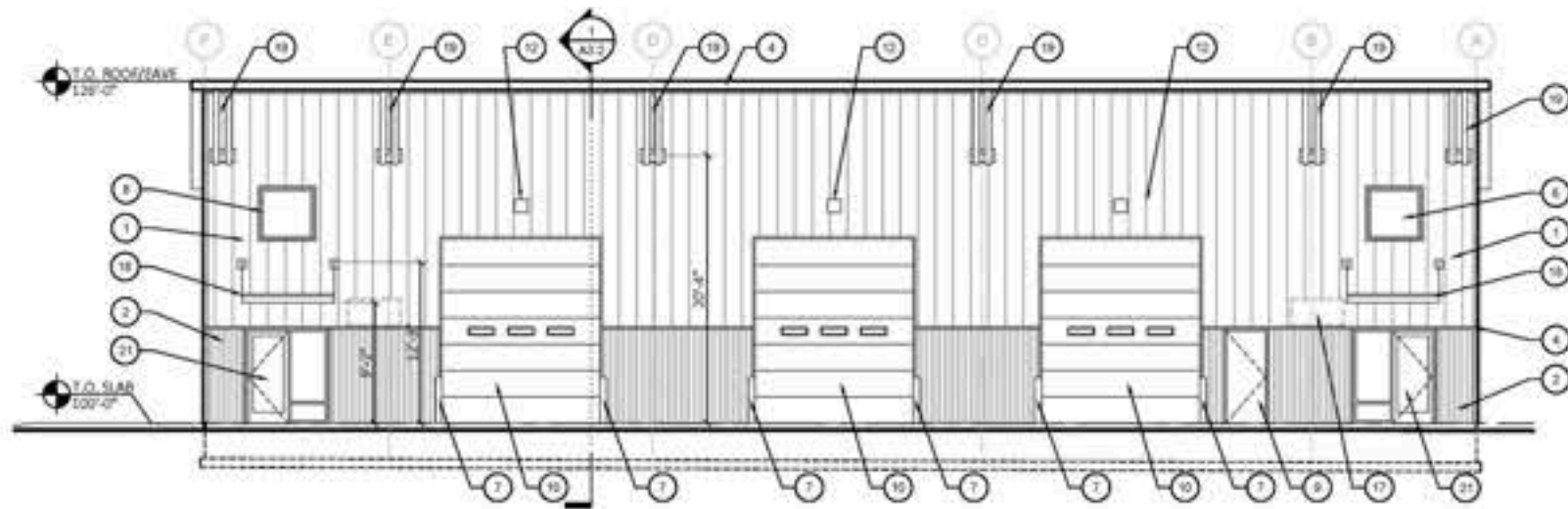
Bars show deviation from

Variables	1 mile	3 miles	5 miles	Variables	1 mile	3 miles	5 miles
2022 Total Population	1,460	14,720	40,589	2022 Per Capita Income	\$48,387	\$45,528	\$41,799
2022 Household Population	1,460	14,637	39,835	2022 Median Household Income	\$100,394	\$79,202	\$69,121
2022 Family Population	1,198	10,710	26,673	2022 Average Household Income	\$123,620	\$102,488	\$91,674
2027 Total Population	1,846	17,458	43,804	2027 Per Capita Income	\$58,502	\$55,135	\$49,954
2027 Household Population	1,846	17,375	43,050	2027 Median Household Income	\$107,804	\$93,517	\$81,349
2027 Family Population	1,513	12,700	28,842	2027 Average Household Income	\$145,766	\$123,359	\$108,872

PROPERTY DETAILS

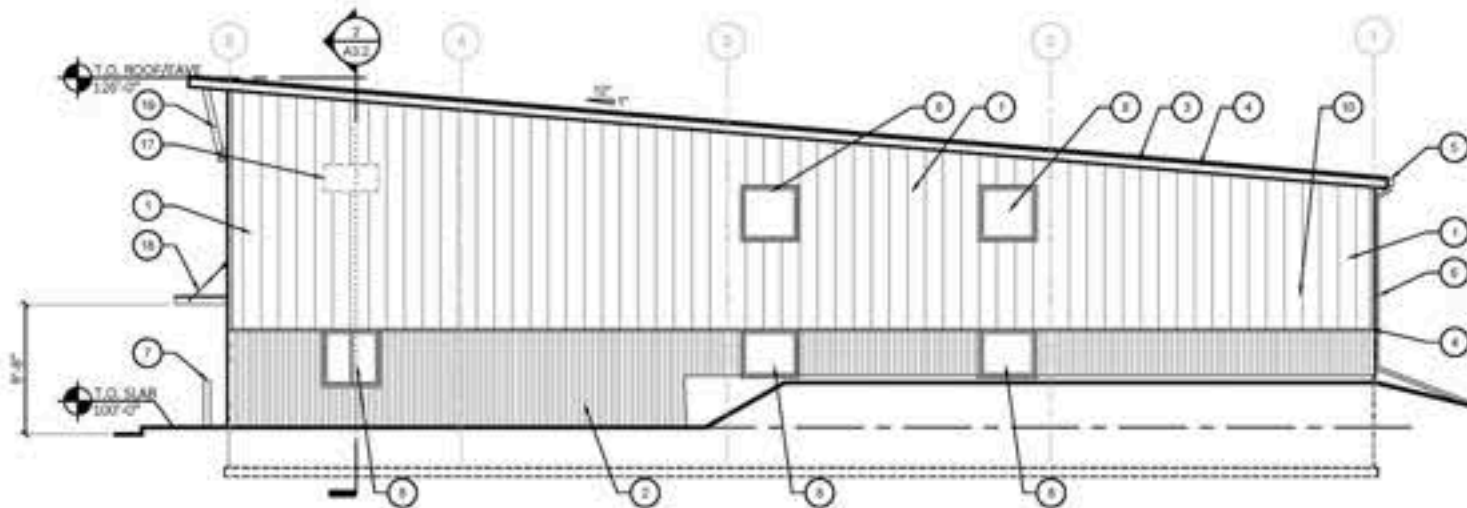


SterlingCRE
ADVISORS



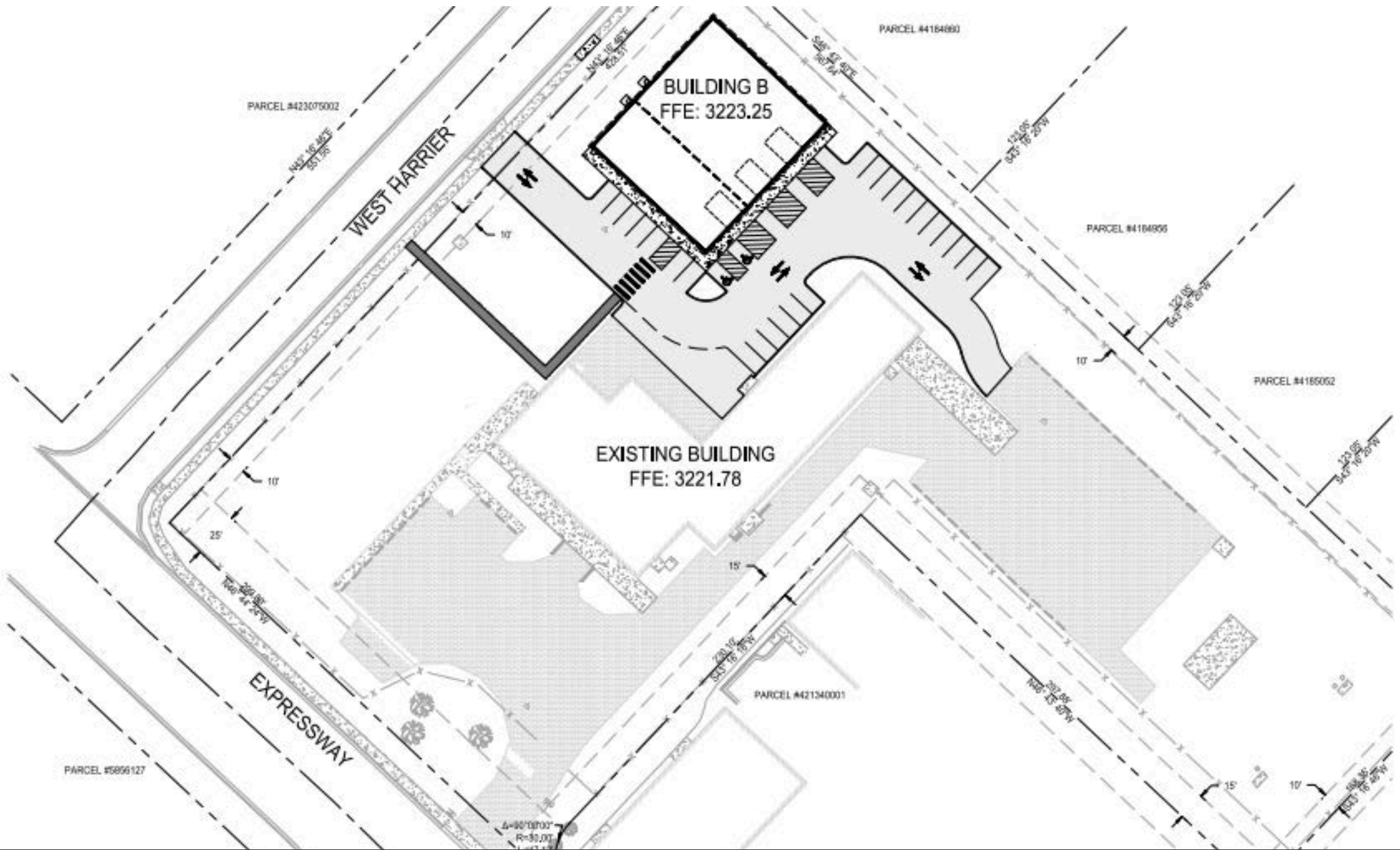
2 EAST ELEVATION

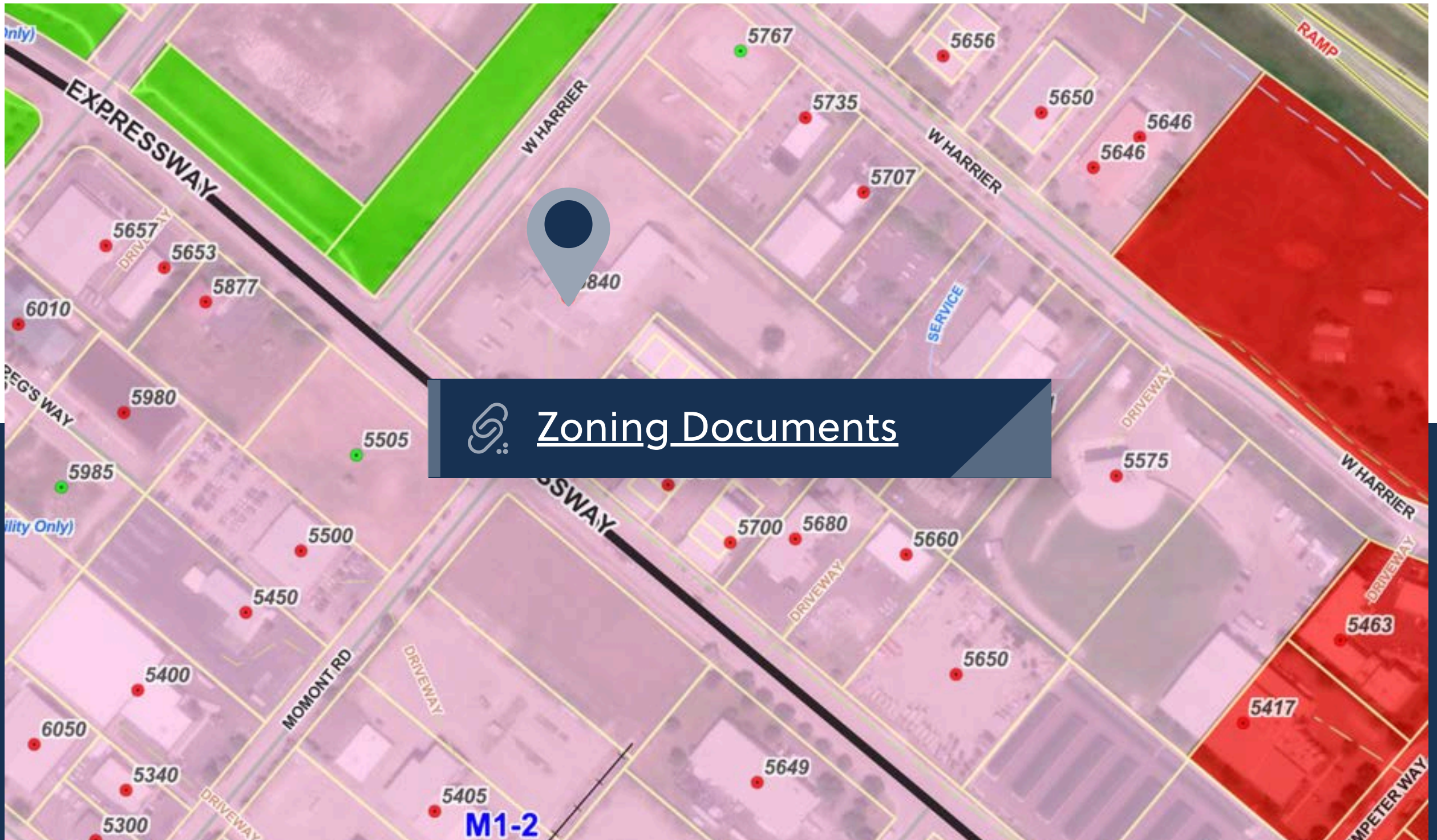
SCALE: 1/8" = 1'-0"



4 NORTH ELEVATION

SCALE: 1/8" = 1'-0"





Zoning Documents

Missoula Air Service

Missoula International Airport offers **direct flights** to major cities on the west coast and midwest.

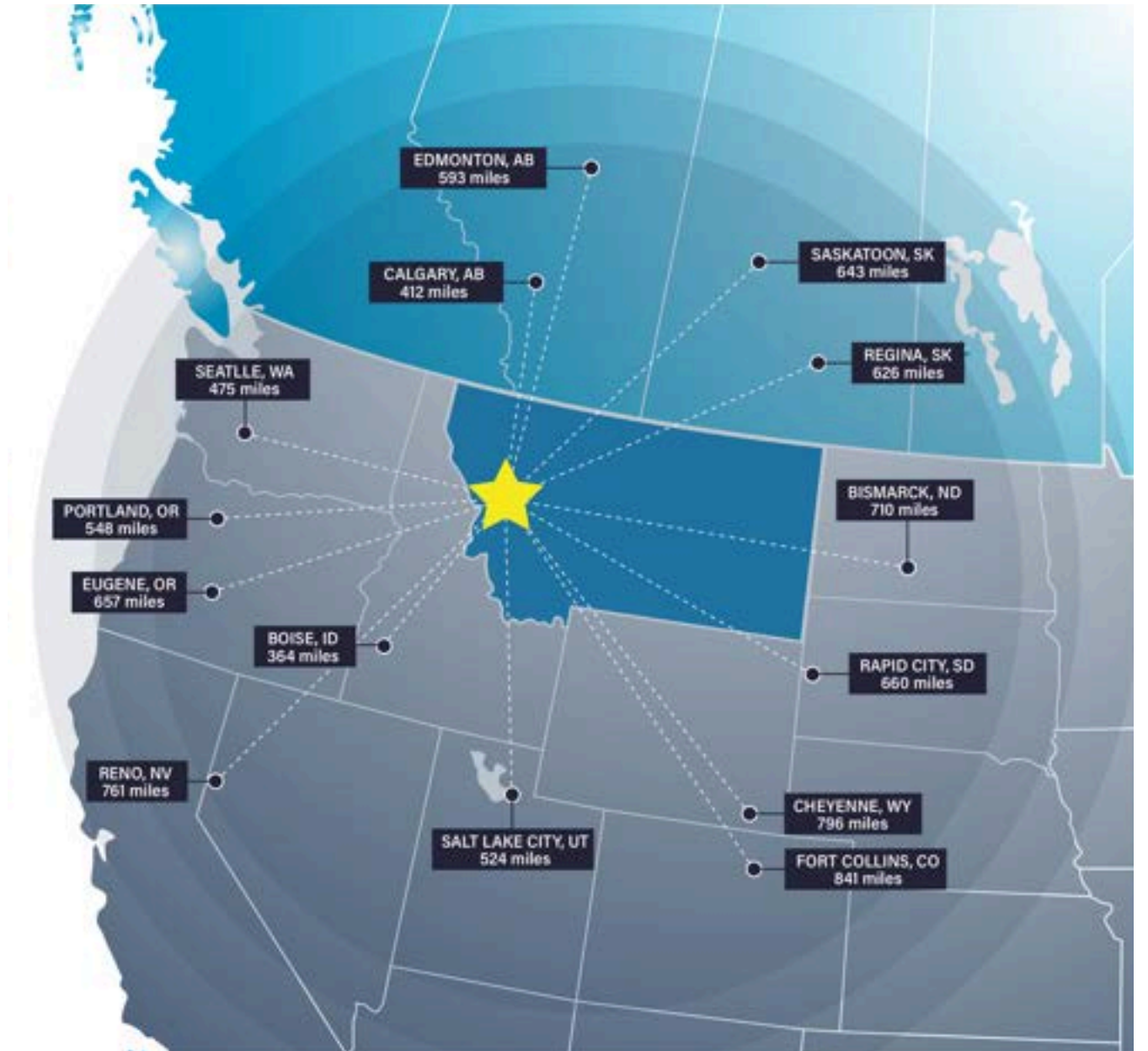


Missoula Access

Missoula offers strategic proximity to major cities in the Pacific Northwest, Midwest, and Canada.

Missoula is within a day's truck drive of cities across the Northwest, including major Canadian metros. Easy access to Interstate 90 and US Highway 93 means Montana's major cities including Billings, Bozeman, Butte, Helena, Great Falls, Kalispell and Missoula are within a half day's drive.

Access to rail and the Missoula International Airport round out the city's access to a multimodal transportation network.



Top Employers

University of Montana

3,000+ employees

Missoula County Public Schools

3,000+ employees

St. Patrick Hospital

1000+ employees

Montana Rail Link

1,000+r employees

Community Medical Center

1000+ employees

Missoula County

500+ employees

City of Missoula

500+ employees

Allegiance Benefits

500+ employees

Noteworthy

Submittable 



workiva



Pathlabs



Cognizant



Source: Montana Department of Labor & Industry | lmi.mt.gov & Zippia | zippia.com





Listing Team



CLAIRE MATTEN, CCIM | SIOR
Commercial Real Estate Advisor

Claire has a long record of successfully guiding local, national, and multi-national clients with their commercial real estate acquisitions, lease obligations, asset reposition and dispositions. Claire specializes in industrial investment, commercial office, and self-storage properties.



CARLY CHENOWETH
Transaction Coordinator

Carly brings an affinity for details, organizational skills and a passion for real estate to the team. After spending several years in the busy world of residential real estate, she knows how to get the most complex deals to closing. Her goal is to make the process effortless for buyers and sellers

Disclaimer

CONFIDENTIALITY & DISCLAIMER All materials and information received or derived from SterlingCRE Advisors its directors, officers, agents, advisors, affiliates, and/or any third party sources are provided without representation or warranty as to completeness, veracity, or accuracy, condition of the property, compliance or lack of compliance with applicable governmental requirements, developability or suitability, the financial performance of the property, the projected financial performance of the property for any party's intended use or any and all other matters. Neither SterlingCRE Advisors its directors, officers, agents, advisors, or affiliates makes any representation or warranty, express or implied, as to accuracy or completeness of any materials or information provided, derived, or received. Materials and information from any source, whether written or verbal, that may be furnished for review are not a substitute for a party's active conduct of its own due diligence to determine these and other matters of significance to such party. SterlingCRE Advisors will not investigate or verify any such matters or conduct due diligence for a party unless otherwise agreed in writing. EACH PARTY SHALL CONDUCT ITS OWN INDEPENDENT INVESTIGATION AND DUE DILIGENCE. Any party contemplating or under contract or in escrow for a transaction is urged to verify all information and to conduct their own inspections and investigations including through appropriate third-party independent professionals selected by such party. All financial data should be verified by the party including by obtaining and reading applicable documents and reports and consulting appropriate independent professionals. SterlingCRE Advisors makes no warranties and/or representations regarding the veracity, completeness, or relevance of any financial data or assumptions. SterlingCRE Advisors does not serve as a financial advisor to any party regarding any proposed transaction. All data and assumptions regarding financial performance, including that used for financial modeling purposes, may differ from actual data or performance. Any estimates of market rents and/or projected rents that may be provided to a party do not necessarily mean that rents can be established at or increased to that level. Parties must evaluate any applicable contractual and governmental limitations as well as market conditions, vacancy factors, and other issues in order to determine rents from or for the property. Legal questions should be discussed by the party with an attorney. Tax questions should be discussed by the party with a certified public accountant or tax attorney. Title questions should be discussed by the party with a title officer or attorney. Questions regarding the condition of the property and whether the property complies with applicable governmental requirements should be discussed by the party with appropriate engineers, architects, contractors, other consultants, and governmental agencies. All properties and services are marketed by SterlingCRE Advisors in compliance with all applicable fair housing and equal opportunity laws.