



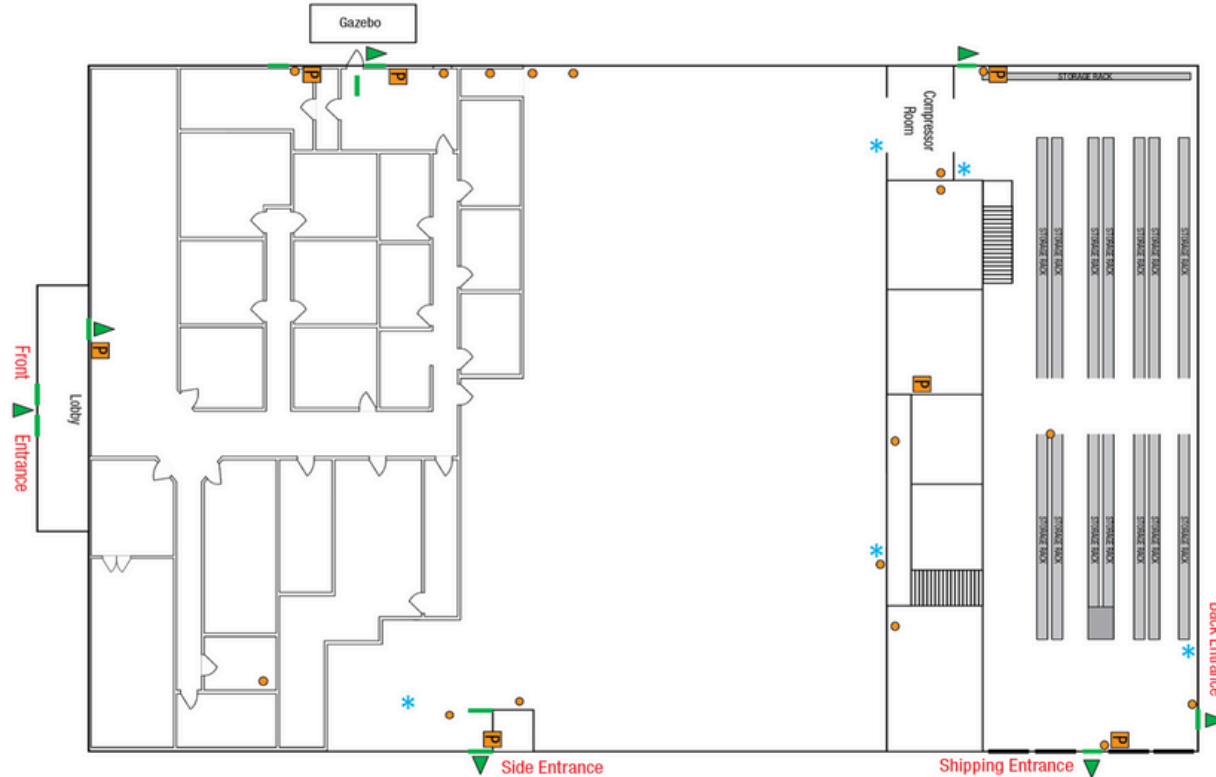
For Sublease

~35,289 SF Industrial Facility Available
Sublease thru March 31, 2030

4 THOMPSON ROAD | EAST WINDSOR, CONNECTICUT



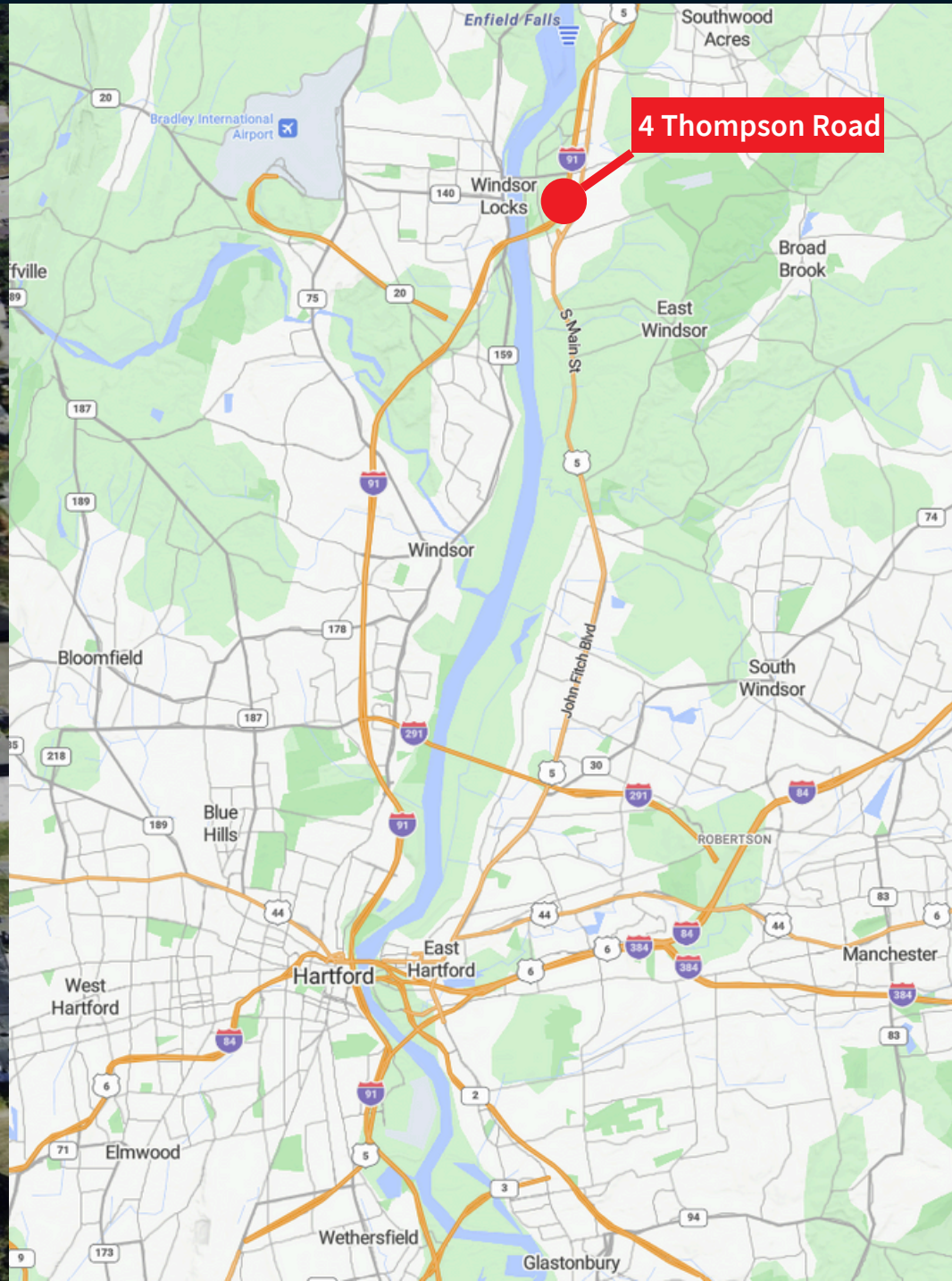
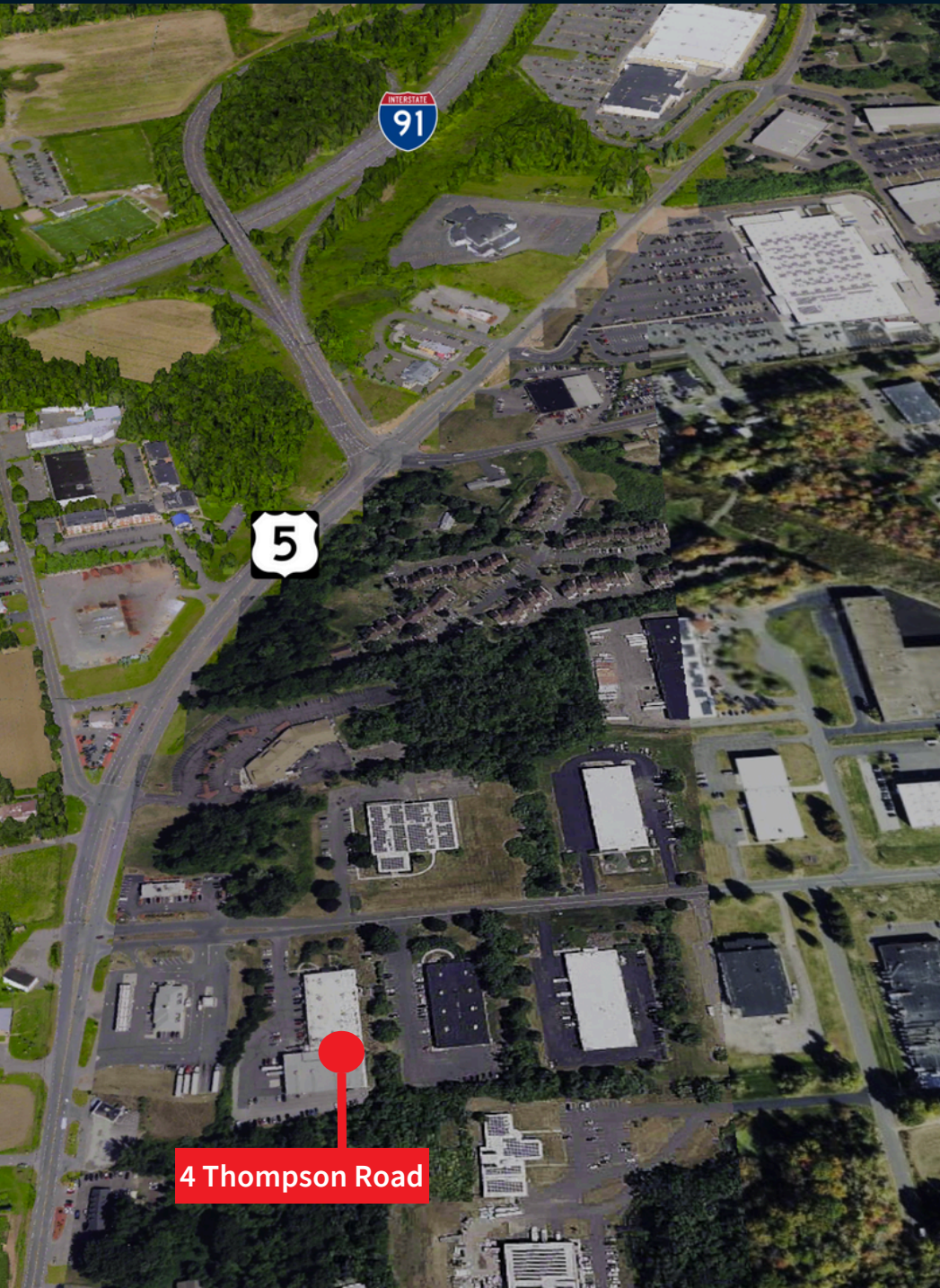
BUILDING SPECIFICATIONS | FLOOR PLAN



Square Footage:	~ 35,289 sf Total ~4,000 sf Newly renovated offices ~31,289 sf Manufacturing/warehouse
Acreage:	3.3 Acres
Construction:	Floor: Concrete slab Walls: Masonry block Columns: 6" Steel H
Clear Height:	Original Section: 13' Expansion: 18'8"
Column Spacing:	22' on center
Sprinkler:	100% Wet system

Loading:	Four (4) total doors including: One (1) 17' drive in door Three (3) 8'x10' dock high loading doors, two with levelers
Lighting:	Fluorescent
Water:	Provided by CT Water
Sewer:	Provided by Town of East Windsor
Power:	Provided by Eversource/ 480V, 1200 amp service
Natural Gas:	Provided by Yankee Gas
Heat:	Gas fired RTUs
Air Conditioning:	100% Air conditioned

LOCATION MAPS



CONTACT



JLL:

James Panczykowski
Vice Chairman
james.panczykowski@jll.com
+ 1 551 404 8834

JLL

1 Station Place, Suite 103
Stamford, Connecticut 06902
203 705 2248