

4854, 4608 & 4616 MACKINAW TR  
REED CITY, MICHIGAN

LAND FOR SALE  
4.42 Acres Available



FLEXIBLE USE



## PROPERTY FEATURES

- Approximately 4.42 acres available
- Zoned Commercial
- Could potentially be approved for recreational marijuana
- Sale Price: \$399,000
- Price Per Acre: \$90,272



For more information, please contact:

**JOE RIZQALLAH**

(616) 822 6310

[jrizqallah@signatureassociates.com](mailto:jrizqallah@signatureassociates.com)

**PETER CACHEY**

(616) 259 6386

[pcachey@signatureassociates.com](mailto:pcachey@signatureassociates.com)

**SIGNATURE ASSOCIATES**  
1188 East Paris Ave SE, Suite 220  
Grand Rapids, MI 49546  
[www.signatureassociateswm.com](http://www.signatureassociateswm.com)

Information is subject to verification and no liability for errors or omissions is assumed. Price is subject to change and listing withdrawal.

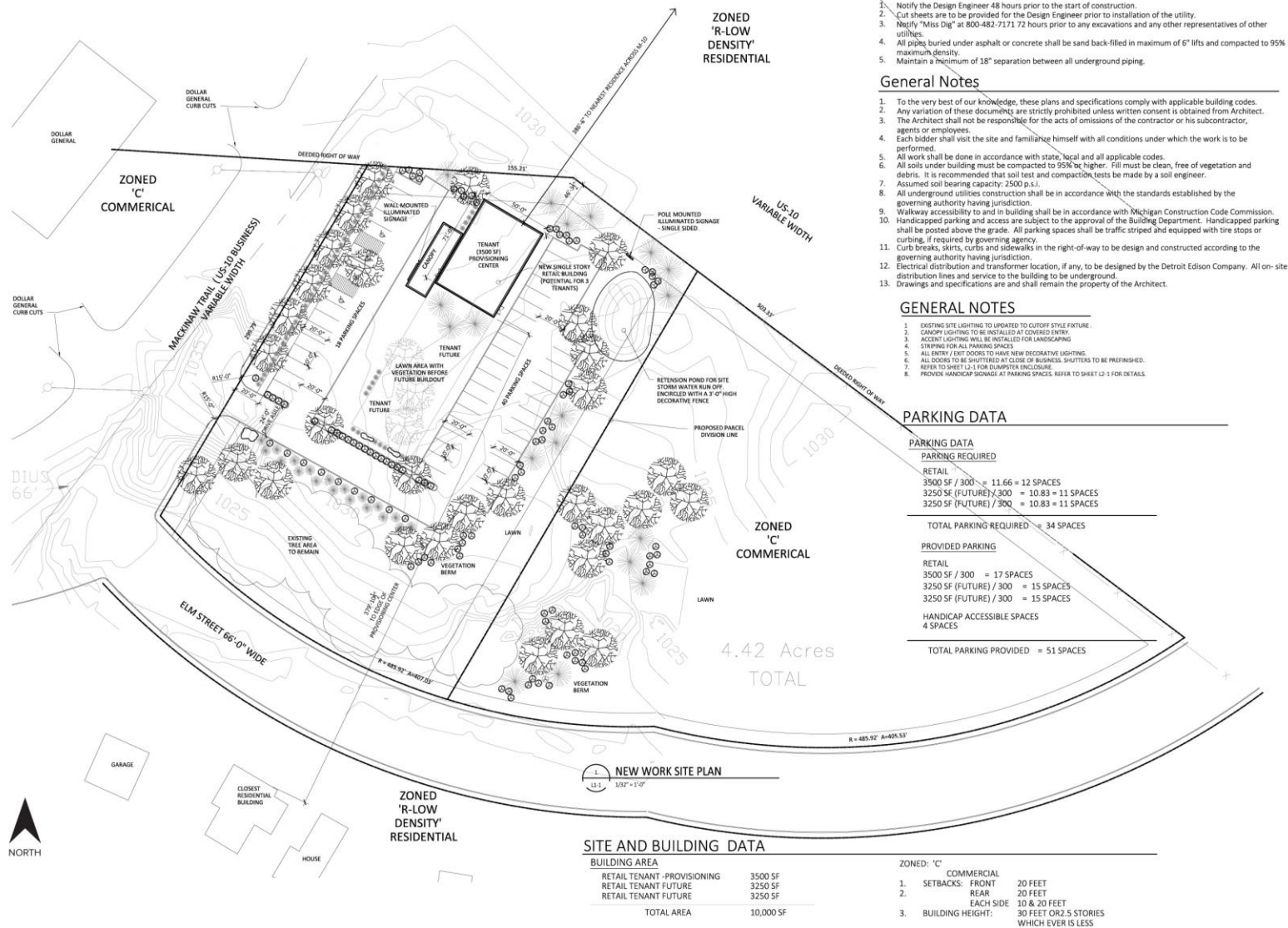


# 4854, 4608 & 4616 Mackinaw Trail – Reed City, Michigan

Land For Sale

4.42  
Acres  
AVAILABLE

## New Work Site Plan



For more information, please contact:

**JOE RIZQALLAH**

(616) 822 6310

jrizzqallah@signatureassociates.com

**PETER CACHEY**

(616) 259 6386

pcachey@signatureassociates.com

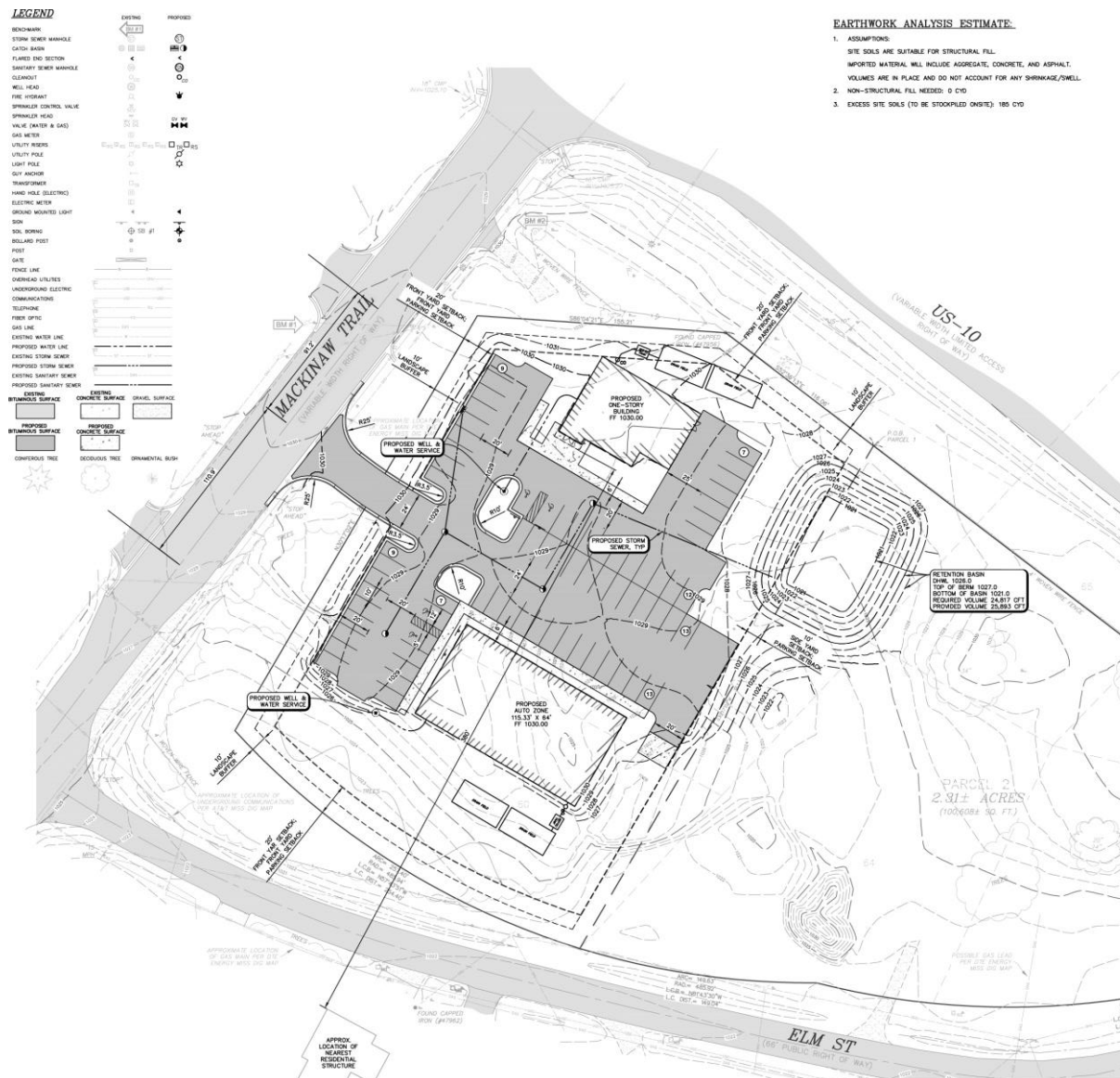
**SIGNATURE ASSOCIATES**  
1188 East Paris Ave SE, Suite 220  
Grand Rapids, MI 49546  
www.signatureassociateswm.com

# 4854, 4608 & 4616 Mackinaw Trail – Reed City, Michigan

Land For Sale

4.42  
Acres  
AVAILABLE

## Preliminary Site Plan



For more information, please contact:

**JOE RIZQALLAH**

(616) 822 6310

jrizzqallah@signatureassociates.com

**PETER CACHEY**

(616) 259 6386

pcachey@signatureassociates.com

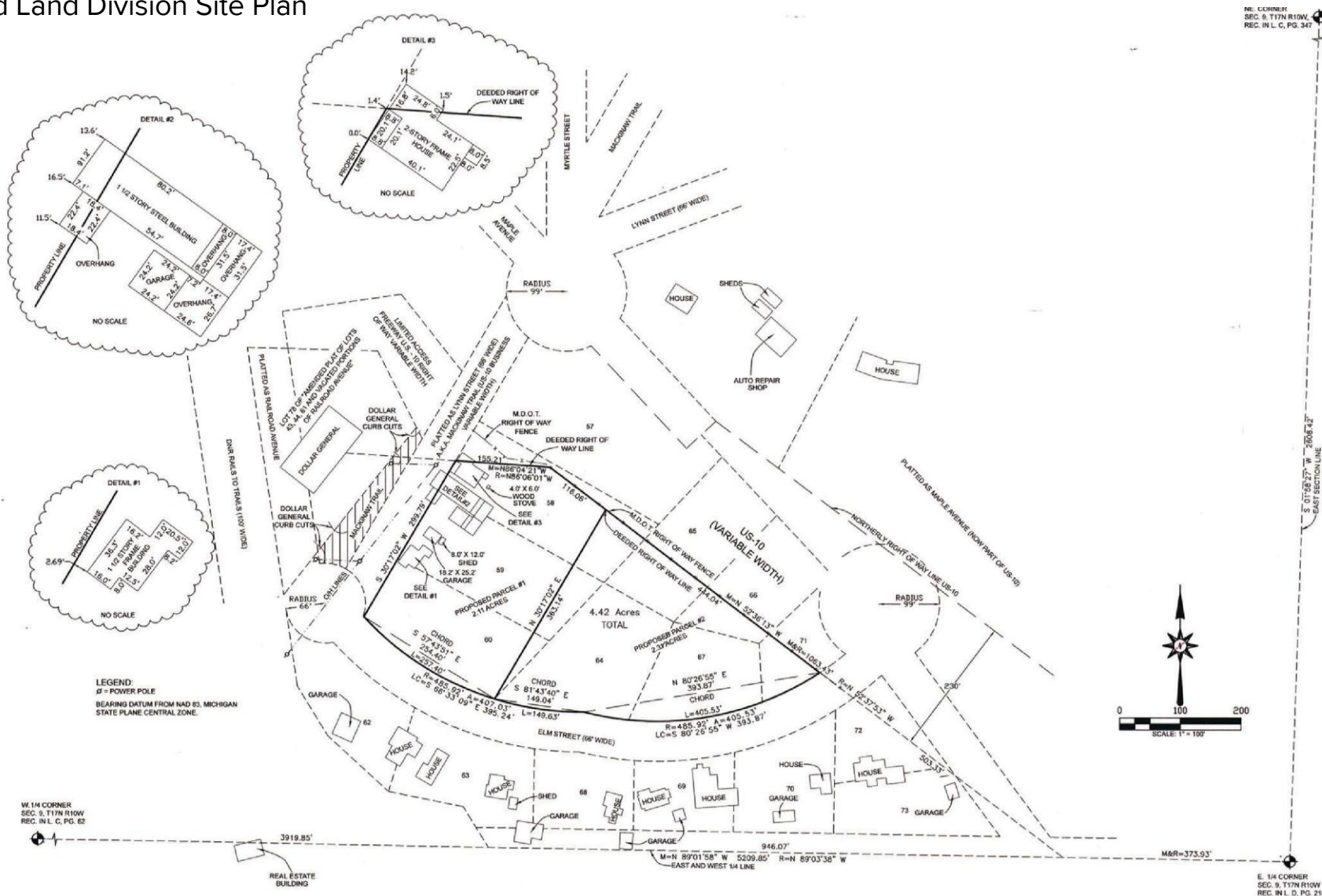
**SIGNATURE ASSOCIATES**  
1188 East Paris Ave SE, Suite 220  
Grand Rapids, MI 49546  
www.signatureassociateswm.com

# 4854, 4608 & 4616 Mackinaw Trail – Reed City, Michigan

Land For Sale

4.42  
Acres  
AVAILABLE

## Proposed Land Division Site Plan



For more information, please contact:

**JOE RIZQALLAH**

(616) 822 6310

jrizzqallah@signatureassociates.com

**PETER CACHEY**

(616) 259 6386

pcachey@signatureassociates.com

**SIGNATURE ASSOCIATES**  
1188 East Paris Ave SE, Suite 220  
Grand Rapids, MI 49546  
www.signatureassociateswm.com

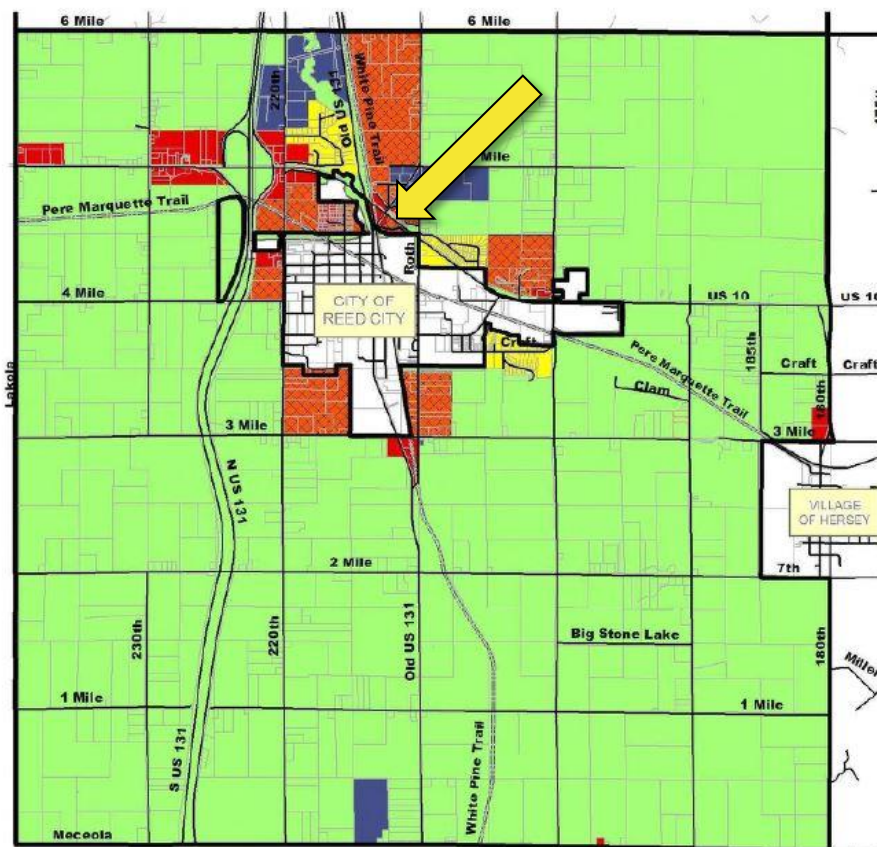


# 4854, 4608 & 4616 Mackinaw Trail – Reed City, Michigan

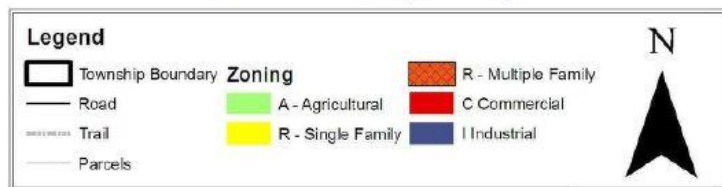
Land For Sale

4.42  
Acres  
AVAILABLE

## Zoning Map | Richmond Township



Richmond Township Zoning



## C – Commercial District | Permitted Uses

Commercial District, C	
Permitted Uses	Special Land Uses
Any retail business whose principal activity is the sale of merchandise within an enclosed building.	<a href="#">Institutions: human care, rehabilitation, religious, social, substance abuse</a>
Bar and taverns	<a href="#">Manufactured housing parks</a>
Bed and breakfasts	<a href="#">Mining</a>
Childcare organizations	<a href="#">Outdoor Assembly</a>
Contractors/lumber yards/equipment rental sales and service	<a href="#">Public buildings, service and utility buildings and installations</a>
Dwellings above the first floor	<a href="#">Recreation, outdoor</a>
Fuel, bulk sales	<a href="#">RV Parks</a>
Funeral homes/mortuaries	<a href="#">Wireless communication facilities</a>
Gas/service stations	
Grain and Seed Elevator	
Heavy equipment and agricultural equipment sales, service and repair	
Hotel/Motel	
Multiple Family Dwellings	
Museums, libraries, public buildings	
Outdoor Sales and use	
Personal service	
Professional and business offices and services	
Recreation, indoor	
Restaurants and Drive-through establishments	
Senior housing	
Temporary buildings and trailers	
Vehicle sales, rental, wash	
Veterinary hospitals	
Wholesale sales	
Accessory uses	

For more information, please contact:

**JOE RIZQALLAH**

(616) 822 6310

jrizzqallah@signatureassociates.com

**PETER CACHEY**

(616) 259 6386

pcachey@signatureassociates.com

**SIGNATURE ASSOCIATES**

1188 East Paris Ave SE, Suite 220

Grand Rapids, MI 49546

www.signatureassociateswm.com