

FOR SALE ±5,000 - 10,000 SF

TWO BUILDINGS WITH FENCED YARDS ON SEPARATE PARCELS

11700 - 11702 Anabel Avenue, Garden Grove, CA 92843



Buildings Can be Sold Together or Separately

11700 Anabel Avenue

PROPERTY FEATURES:

- Freestanding building totaling ±5,000 SF
- ±600 SF of office
- 300 Amps, 120/208V (verify)
- Concrete fenced yard area
- Two (2) ground level doors
- ±12'-18' warehouse clearance
- No columns in warehouse (clear span)
- No sprinklers
- Available at the close of escrow

11702 Anabel Avenue

PROPERTY FEATURES:

- Freestanding building totaling ±5,000 SF
- ±600 SF of office
- 100 Amps, 120/208V (verify)
- Oversized concrete fenced yard area
- Two (2) ground level doors
- ±12'-18' warehouse clearance
- No columns in warehouse (clear span)
- No sprinklers
- Leased until December 31, 2025
(tenant could stay longer or vacate at close of escrow)

WADE TIFT

Managing Director

Lic. #01274371

(949) 296-3605

wade.tift@jll.com



17877 Von Karman Avenue, Suite 500, Irvine, CA 92614

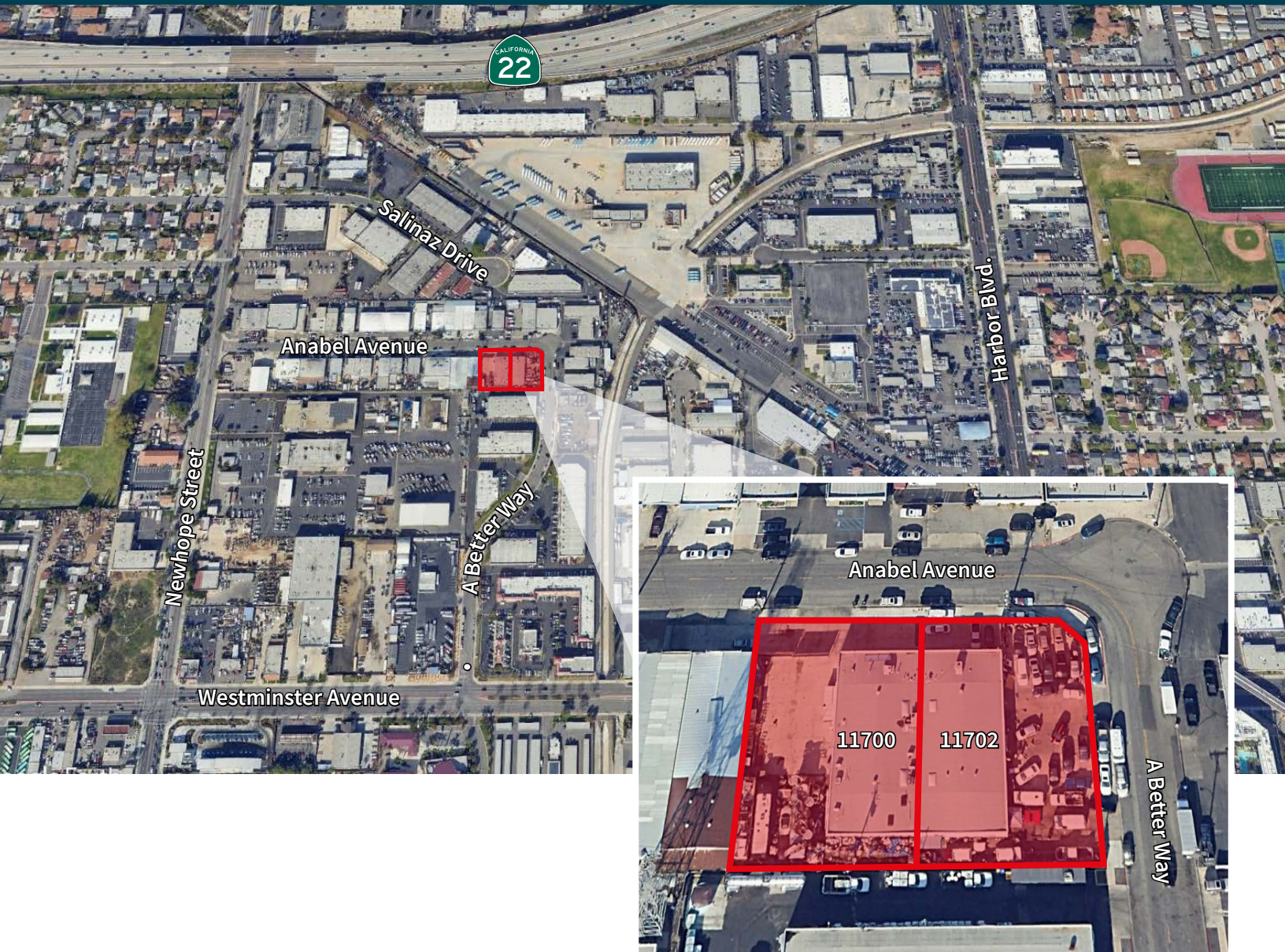
Lic. #01856260 | jll.com

Although information has been obtained from sources deemed reliable, JLL does not make any guarantees, warranties or representations, express or implied, as to the completeness or accuracy as to the information contained herein. Any projections, opinions, assumptions or estimates used are for example only. There may be differences between projected and actual results, and those differences may be material. JLL does not accept any liability for any loss or damage suffered by any party resulting from reliance on this information. If the recipient of this information has signed a confidentiality agreement with JLL regarding this matter, this information is subject to the terms of that agreement. ©2025. Jones Lang LaSalle IP, Inc. All rights reserved.

FOR SALE ±5,000 - 10,000 SF

TWO BUILDINGS WITH FENCED YARDS ON SEPARATE PARCELS

11700 - 11702 Anabel Avenue, Garden Grove, CA 92843



WADE TIFT

Managing Director

Lic. #01274371

(949) 296-3605

wade.tift@jll.com



17877 Von Karman Avenue, Suite 500, Irvine, CA 92614

Lic. #01856260 | jll.com

Although information has been obtained from sources deemed reliable, JLL does not make any guarantees, warranties or representations, express or implied, as to the completeness or accuracy as to the information contained herein. Any projections, opinions, assumptions or estimates used are for example only. There may be differences between projected and actual results, and those differences may be material. JLL does not accept any liability for any loss or damage suffered by any party resulting from reliance on this information. If the recipient of this information has signed a confidentiality agreement with JLL regarding this matter, this information is subject to the terms of that agreement. ©2025. Jones Lang LaSalle IP, Inc. All rights reserved.