



# Bluff Plaza

2700 - 2716 28th Street, Boulder CO



**Michael-Ryan McCarty**  
mccarty@gibbonswhite.com  
(303) 586-5939

**Angela Topel**  
angela@gibbonswhite.com  
(303) 586-5921

**Patrick Weeks**  
patrick@gibbonswhite.com  
(303) 586-5935

[www.gibbonswhite.com](http://www.gibbonswhite.com)

 **Property Info & Gallery**

 **View Map**

## Prime Retail Space for Lease in Bluff Plaza

Suite	Size	Lease Rate
2704	765 sq. ft.	\$24.00 NNN
2710	3,000 sq. ft.	\$17.00 NNN
2714	1,800 sq. ft.	\$24.00 NNN
Expenses		\$12.89*

\*Not Including Utilities

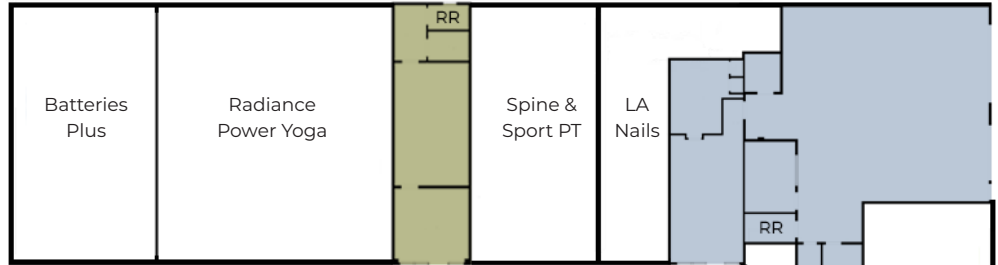
- High Visibility Retail Space in Central Boulder's Core Shopping District
- Join Dot's Diner, Batteries Plus, Radiance Power Yoga, LA Nails, Spine & Sport PT & Relaxing Station
- Located on the Central 28th Street Corridor Near Valmont
- 35,534 Vehicles per Day on 28th Street (Source: CoStar MPSI Estimate 2022)
- Great Parking Ratio of over 5/1,000 sq. ft.

The information included has been obtained from sources believed reliable. While we do not doubt the accuracy of the information, it has not been verified and no guarantee, warranty, or representation is being made.



2305 Canyon Blvd, Suite 200, Boulder, CO 80302 - (303) 442-1040

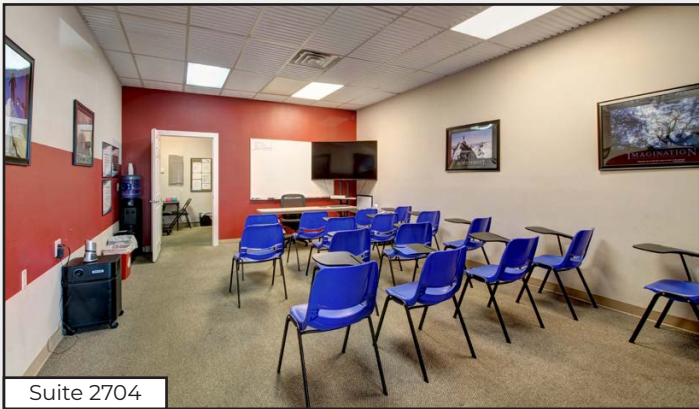
© 2024 Gibbons-White, Inc.



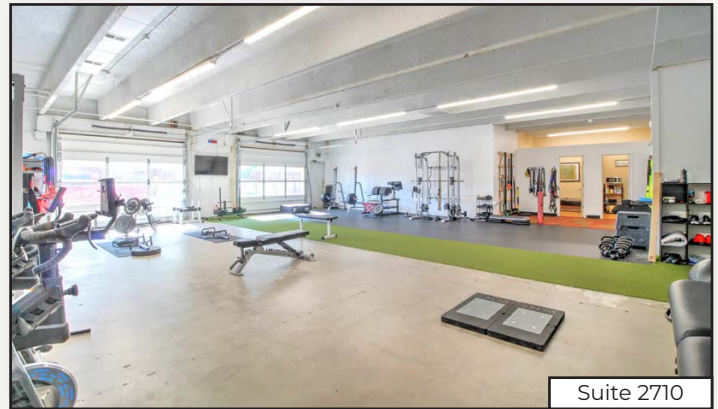
**Suite 2704**  
765 sq. ft.  
\$2,352/mo

**Suite 2710**  
3,000 sq. ft.  
\$7,473/mo

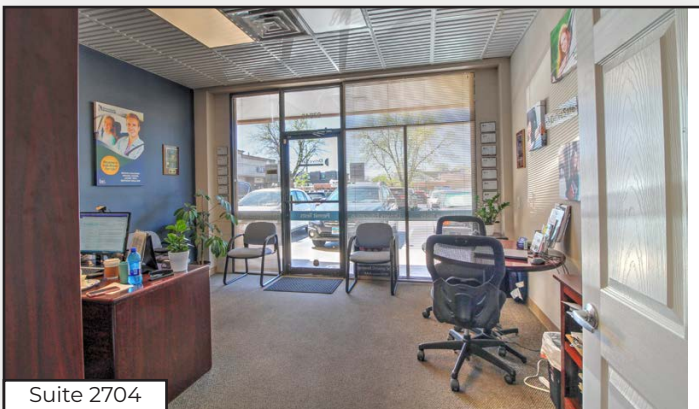
**Suite 2714**  
1,800 sq. ft.  
\$5,534/mo  
Available 2/1/25



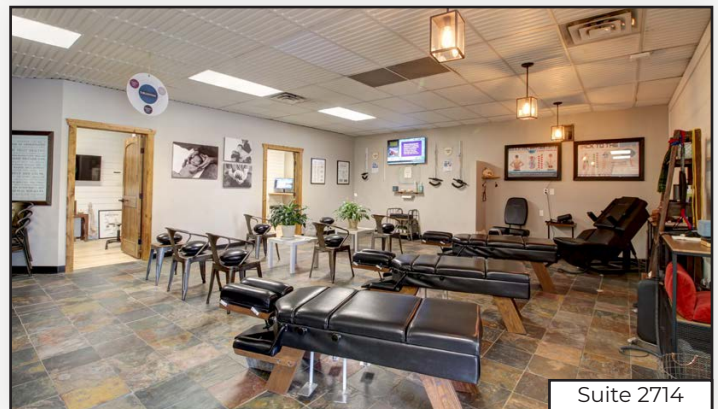
Suite 2704



Suite 2710



Suite 2704



Suite 2714

The information included has been obtained from sources believed reliable. While we do not doubt the accuracy of the information, it has not been verified and no guarantee, warranty, or representation is being made.