

BULK

BULK
INDUSTRIAL
GROUP

THE VALUE LEADER IN INDUSTRIAL REAL ESTATE

WILL ROGERS BUSINESS PARK HEAVY INDUSTRIAL | RAIL-SERVED WAREHOUSE

Oklahoma City, OK | Available for Lease

+/- 206,000 SF AVAILABLE



7501 SW 29th St, Oklahoma City, OK



SITE FEATURES

- 29th Street frontage and access
- Beautiful Business Park setting
- All utilities to site
- Heavy power available
- +/- 24' clear height
- 40 MW substation on site
- New truck courts & loading
- High density sprinkler
- Pre-cast concrete construction
- 62' x 40' column spacing
- High density sprinkler
- Rail served
- Ample excess ground for trailer parking or outside storage

FOR INFORMATION

TODD P. MENDON

BULK INDUSTRIAL GROUP, LLC

913-709-8261 (m)

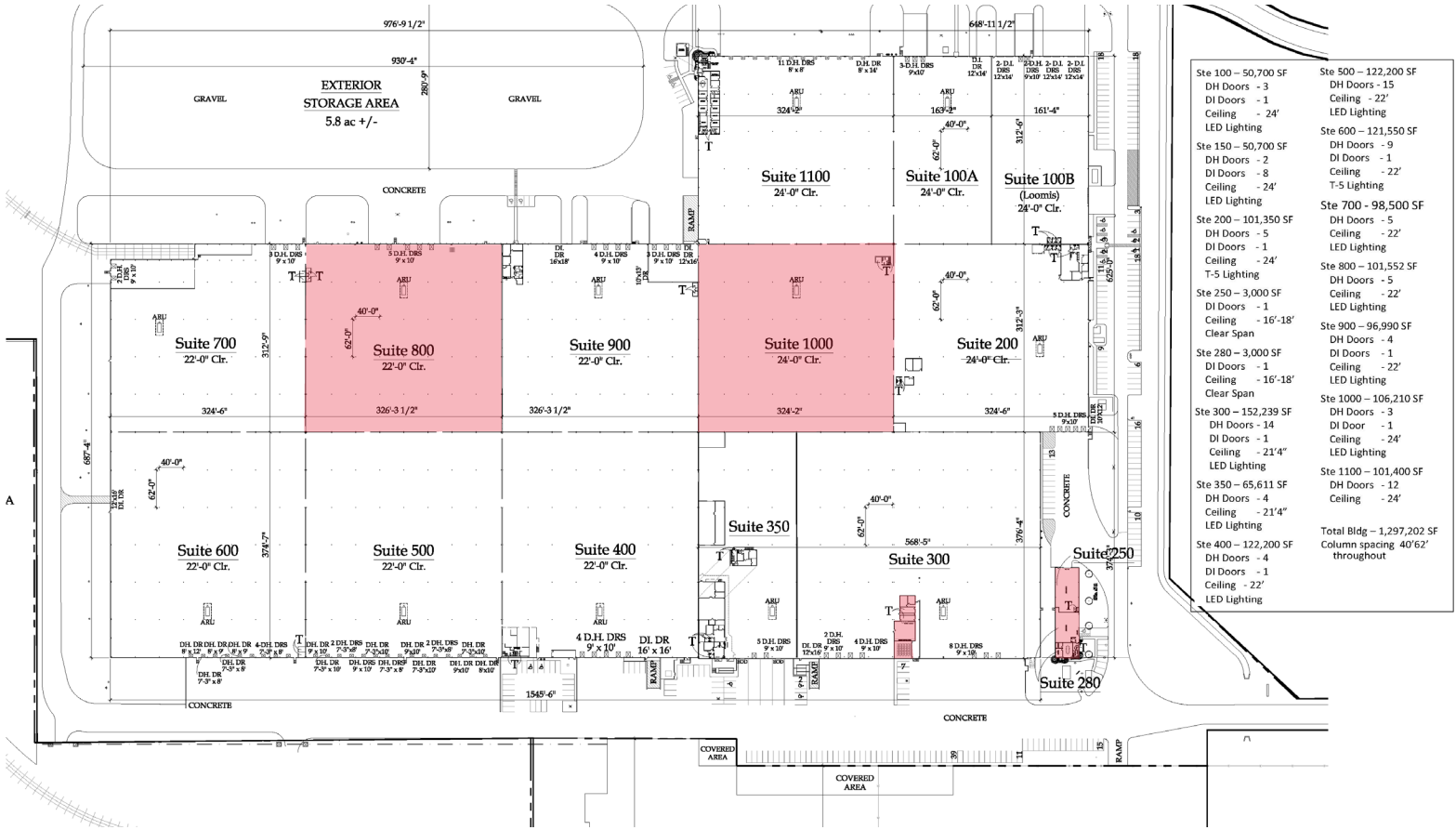
913-378-9002 (o)

tmendon@bulkig.com

Information subject to verification and no liability for errors or omissions is assumed. Price subject to change. 5/31/24

2600 Grand Boulevard, Suite 700 | Kansas City, MO 64108

SITE PLAN



Ste 100 – 50,700 SF	DH Doors - 3	DI Doors - 1	Ceiling - 24'	LED Lighting
Ste 150 – 50,700 SF	DH Doors - 2	DI Doors - 8	Ceiling - 24'	LED Lighting
Ste 200 – 101,350 SF	DI Doors - 5	DI Doors - 1	Ceiling - 24'	Clear Span
Ste 250 – 3,000 SF	DI Doors - 1	Ceiling - 16'-18"	Clear Span	
Ste 280 – 3,000 SF	DI Doors - 1	Ceiling - 16'-18"	Clear Span	
Ste 300 – 152,239 SF	DH Doors - 14	DI Door - 1	Ceiling - 21'4"	LED Lighting
Ste 350 – 65,611 SF	DH Doors - 4	DI Doors - 4	Ceiling - 21'4"	LED Lighting
Ste 400 – 122,200 SF	DI Doors - 1	Ceiling - 22'	LED Lighting	
Ste 500 – 122,200 SF	DH Doors - 15	Ceiling - 22'	LED Lighting	
Ste 600 – 121,550 SF	DI Doors - 9	DI Doors - 1	Ceiling - 22'	T-5 Lighting
Ste 700 – 98,500 SF	DH Doors - 5	DH Doors - 5	Ceiling - 22'	LED Lighting
Ste 800 – 101,552 SF	DH Doors - 5	Ceiling - 22'	LED Lighting	
Ste 900 – 96,990 SF	DI Doors - 4	DI Doors - 1	Ceiling - 22'	LED Lighting
Ste 1000 – 106,210 SF	DH Doors - 3	DI Door - 1	Ceiling - 24'	LED Lighting
Ste 1100 – 101,400 SF	DH Doors - 12	Ceiling - 24'		
Total Bldg – 1,297,202 SF Column spacing 40'62" throughout				

SITE AERIAL

