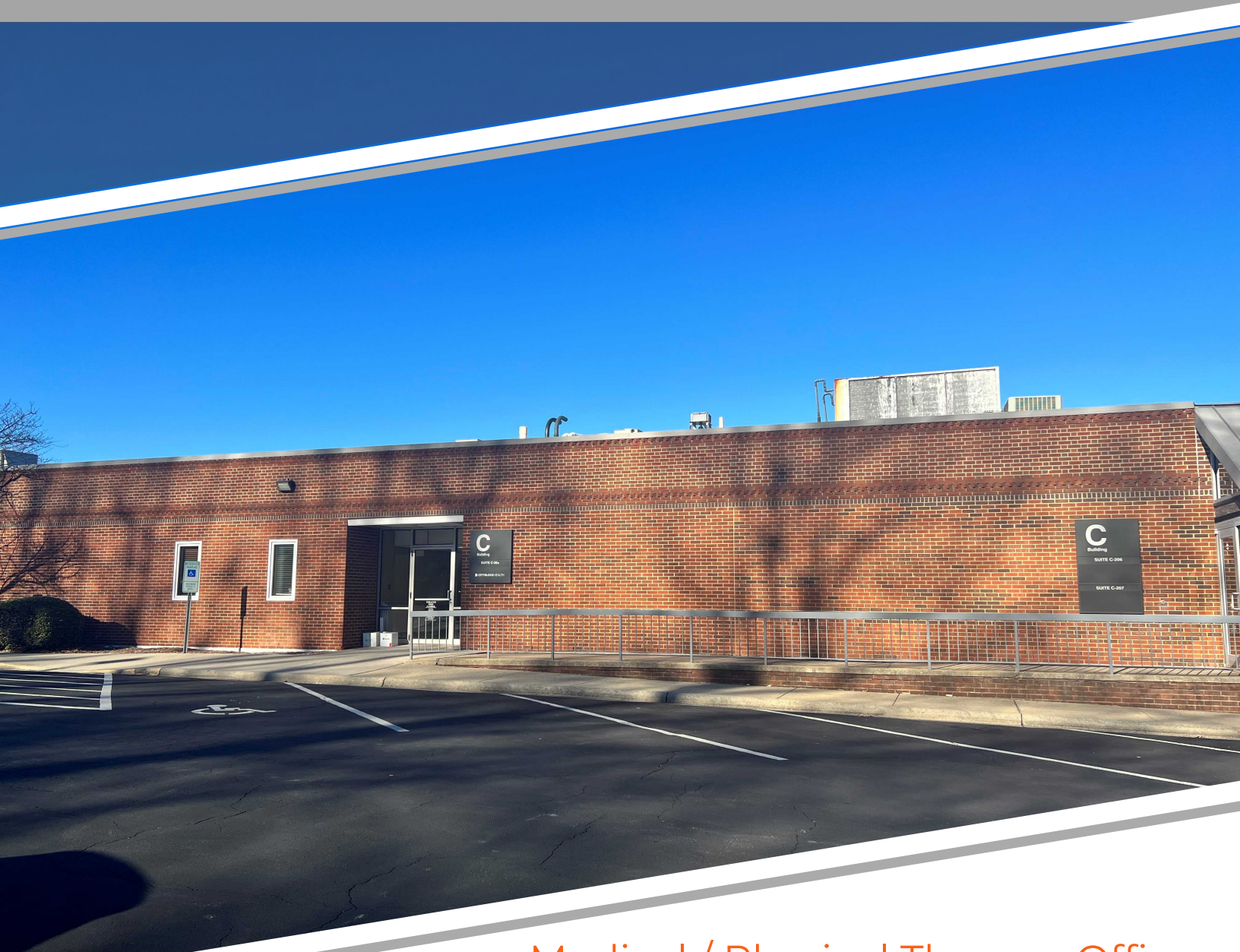


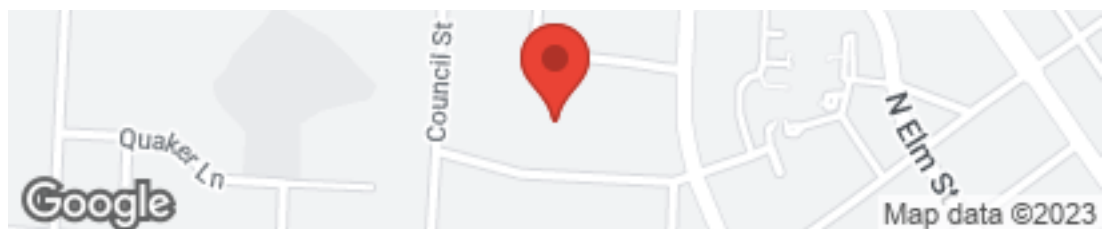
Investment Sale!

\$439,000



Medical / Physical Therapy Office
624 Quaker Lane C-200

HIGH POINT, NC 27262





Lindsay Commercial Properties
1912 Eastchester Dr. Ste 200
High Point, NC 27265

Office: 336-878-5171

Mlindsay.lcp@gmail.com
Mark Lindsay, CCIM: Founder & President

Why Choose Lindsay Commercial Properties?

...Because of our Team of Professionals and our Values.

Lindsay Commercial Properties was founded and built with a vision to BE the BEST for our clients through dedication to Excellence, and the integrity to DO the Best for our clients, through our Experience and Innovation.

Mark leads our firm as President and founder. With more than 17 years of experience in commercial Real Estate. He works with industrial,warehouse,manufacturing and shopping center properties, as well as site selections, 1031 tax-free exchanges and investment properties. Mark is a member of the National North Carolina and High Point Associations of Realtors; 2014 & 2020 Past President of HPRAR Board, Awarded Realtor of the Year in 2020, Political Affairs Award for providing outstanding Leadership in Realtor legislative and political issues and supporting RPAC in 2020, Past President of the HP Realtors Commercial Alliance (HPRCA) 2012, Past Board of Governors member for NC RCA; Current Director for Board of Directors of the High Point Association of Realtors, Member of the Community Services & Property Management Committees of HPRAR and NCR Property Management Division; RLI (Realtors Land Institute) working toward an ALC (Accredited Land Consultant) designation; CCIM (Certified Commercial Investor Member); as well as the Triad CIE (commercial information exchange) member.

Mark is a Veteran of the Gulf War, an Ironman athlete, marathoner, licensed avid Sky Diver and Scuba Diver. He is also a graduate of Clemson University with a BS degree in Electrical Engineering and holds NC Licenses for Commercial Contracting and Insurance.

As the founder, Mark strives to build and maintain relationships with clients, customers, and peers in the Real Estate field.

PROPERTY DESCRIPTION

Medical / Physical Therapy Office
624 Quaker Lane C-200 | High Point, NC 27262

03



Investment Sale

Lindsay Commercial Properties is excited to present this unique opportunity in downtown High Point near High Point Regional Hospital.

This 3600+/- sf medical office was formerly built out and occupied by Cornerstone Physical Therapy.

The space has several amenities to include:

- 1- Therapy Pool with submerged treadmill
- 2- Locker room style changing and restrooms.
- 3- Handicap Showers
- 4- Multiple exam rooms and offices
- 5- Reception area
- 6- Open Gym Area

This space could be expanded into adjacent space for up to 7200+/- sf of office area.

A Must See!

Contact Broker today:
Mark Lindsay - 336-692-5612

PROPERTY PHOTOS

Medical / Physical Therapy Office
624 Quaker Lane C-200 | High Point, NC 27262



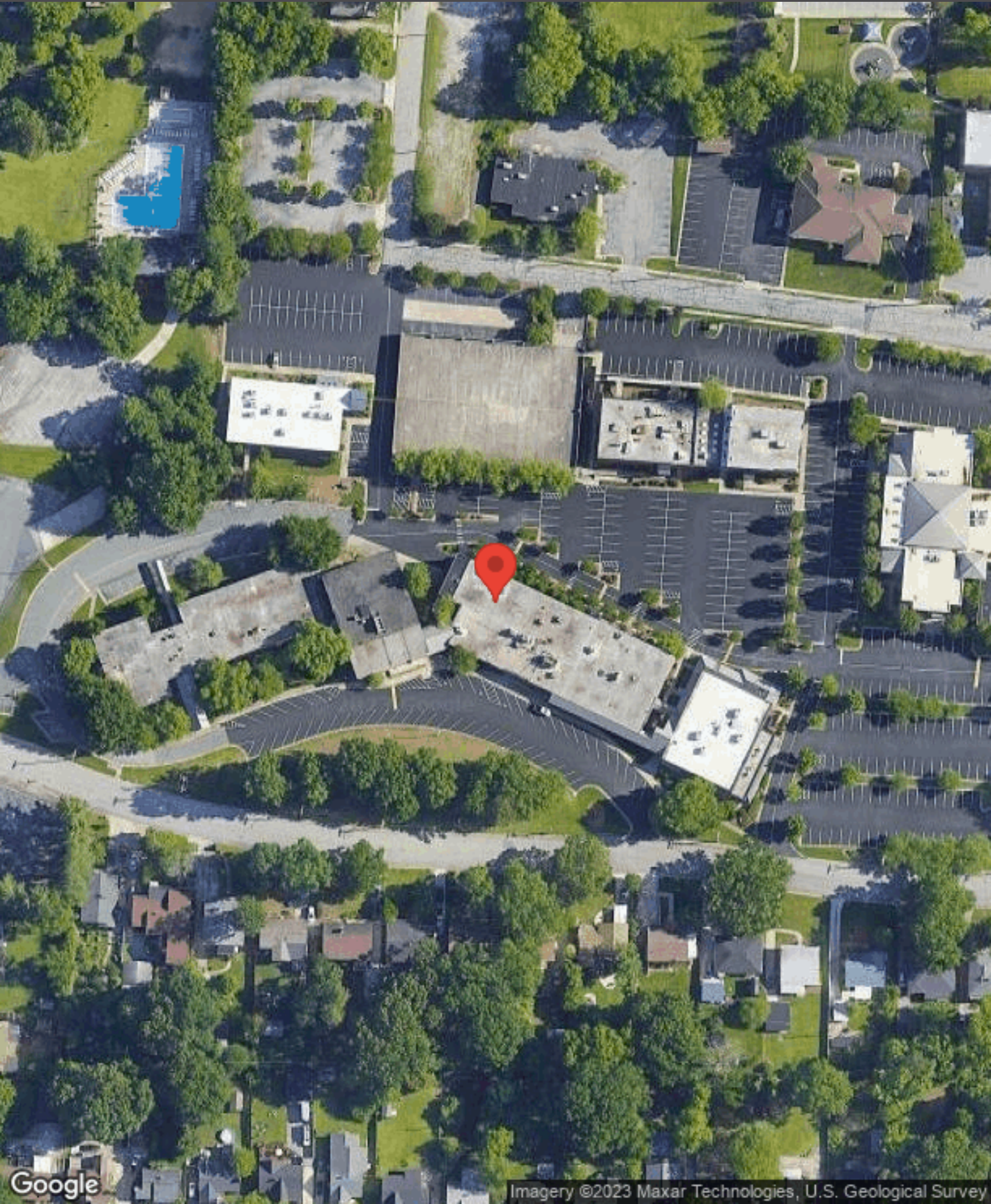
PROPERTY PHOTOS

Medical / Physical Therapy Office
624 Quaker Lane C-200 | High Point, NC 27262



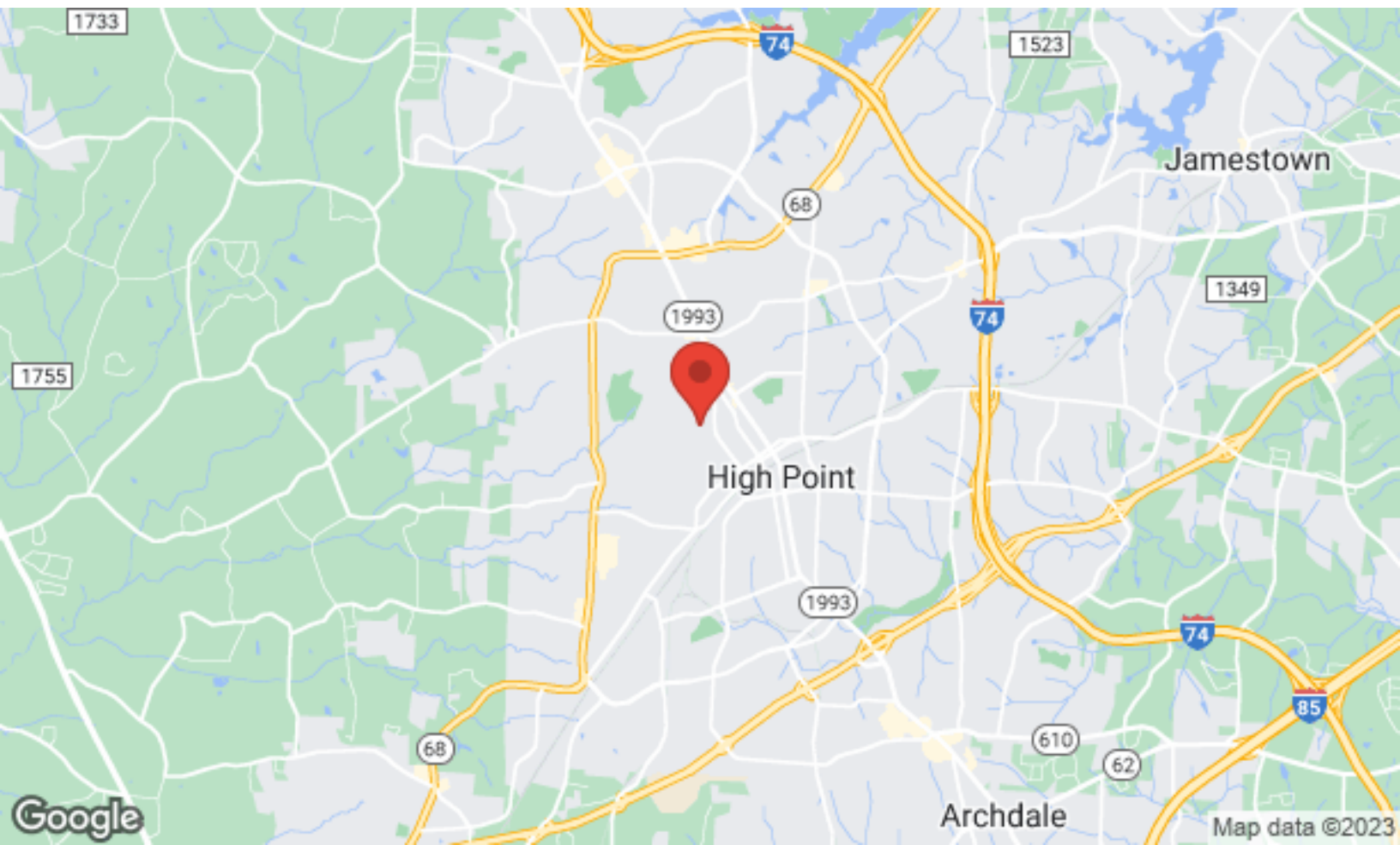
AERIAL MAP

Medical / Physical Therapy Office
624 Quaker Lane C-200 | High Point, NC 27262



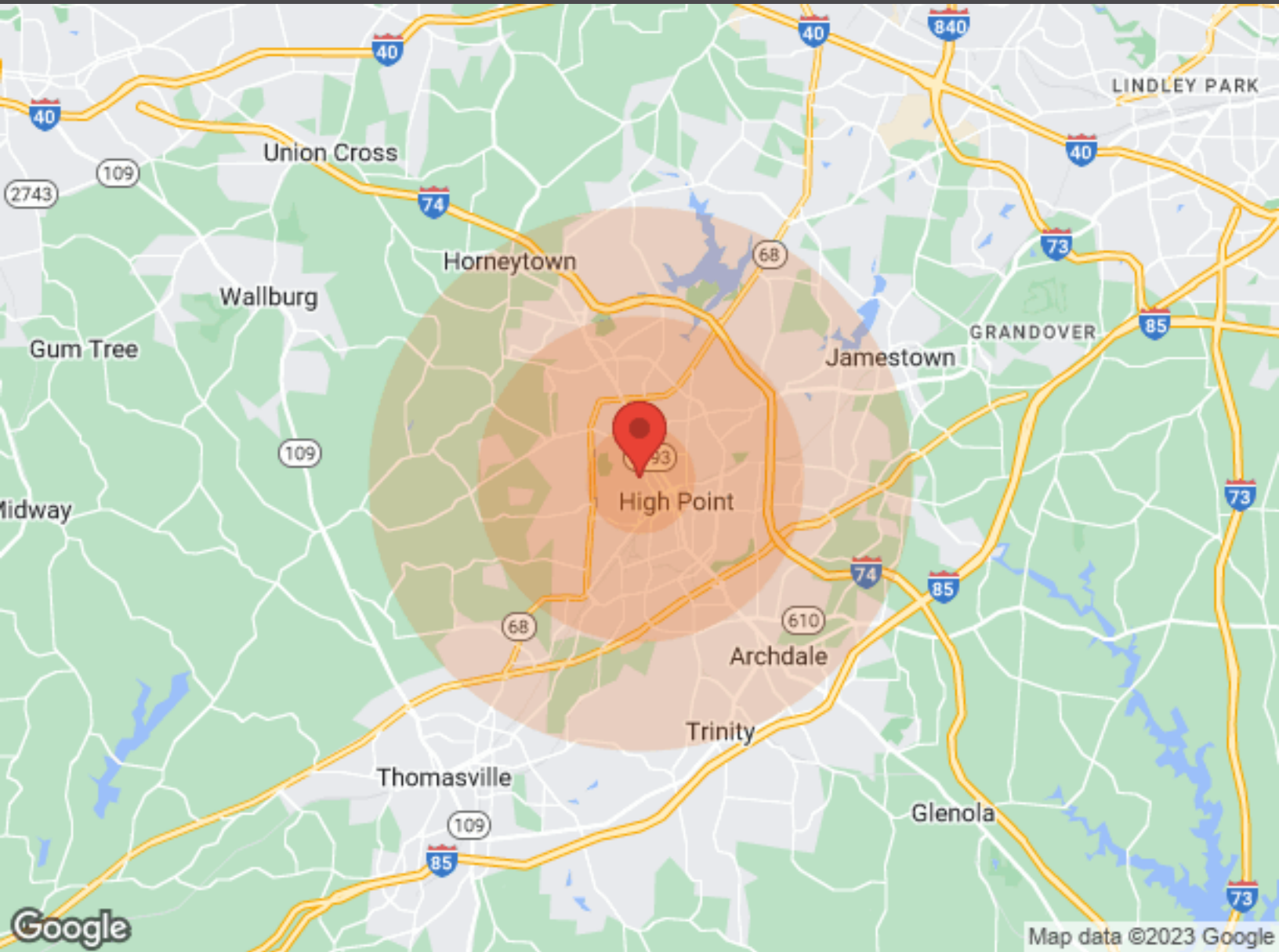
LOCATION MAPS

Medical / Physical Therapy Office
624 Quaker Lane C-200 | High Point, NC 27262



DETAILED DEMOGRAPHICS

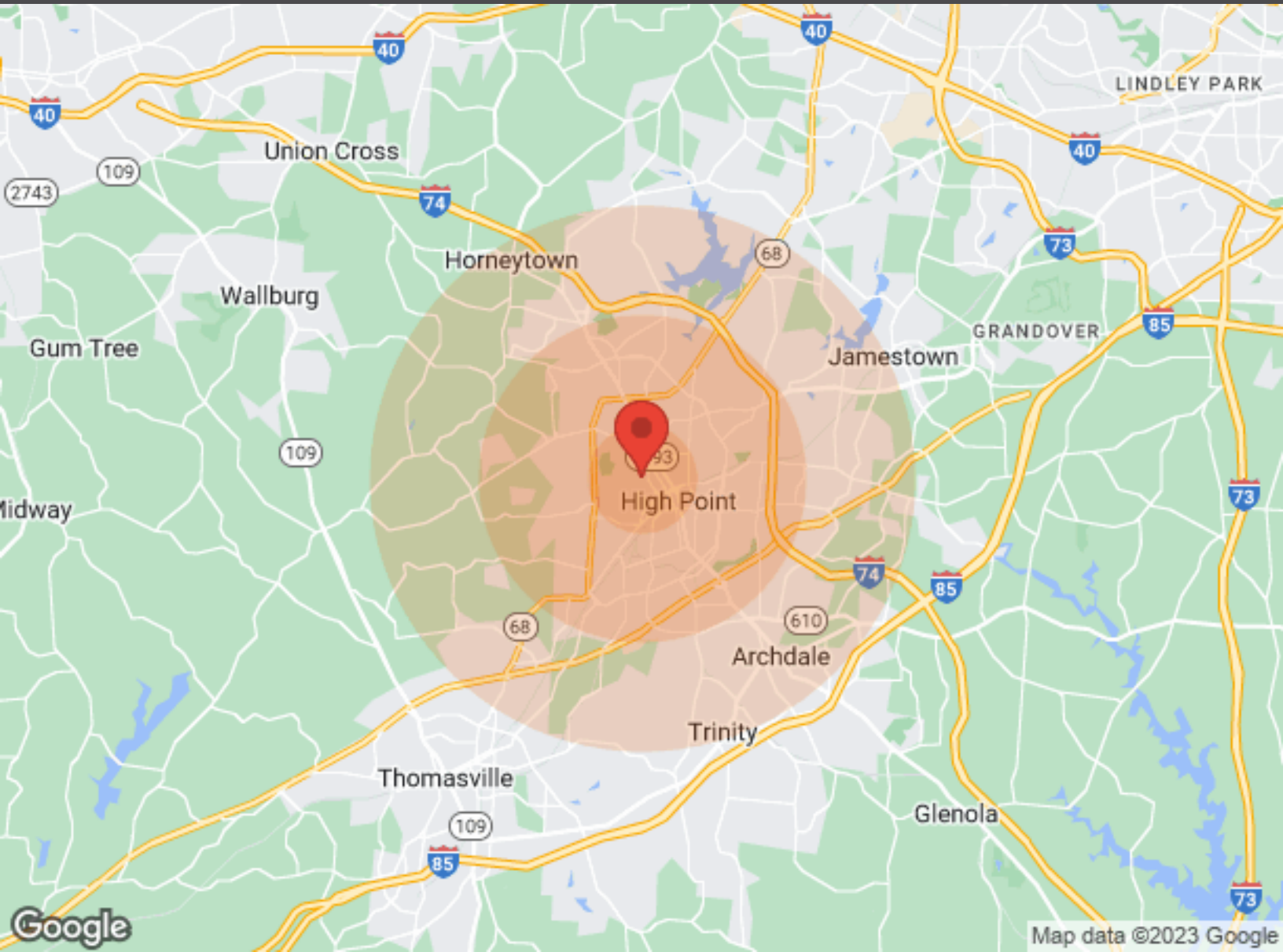
Medical / Physical Therapy Office
624 Quaker Lane C-200 | High Point, NC 27262



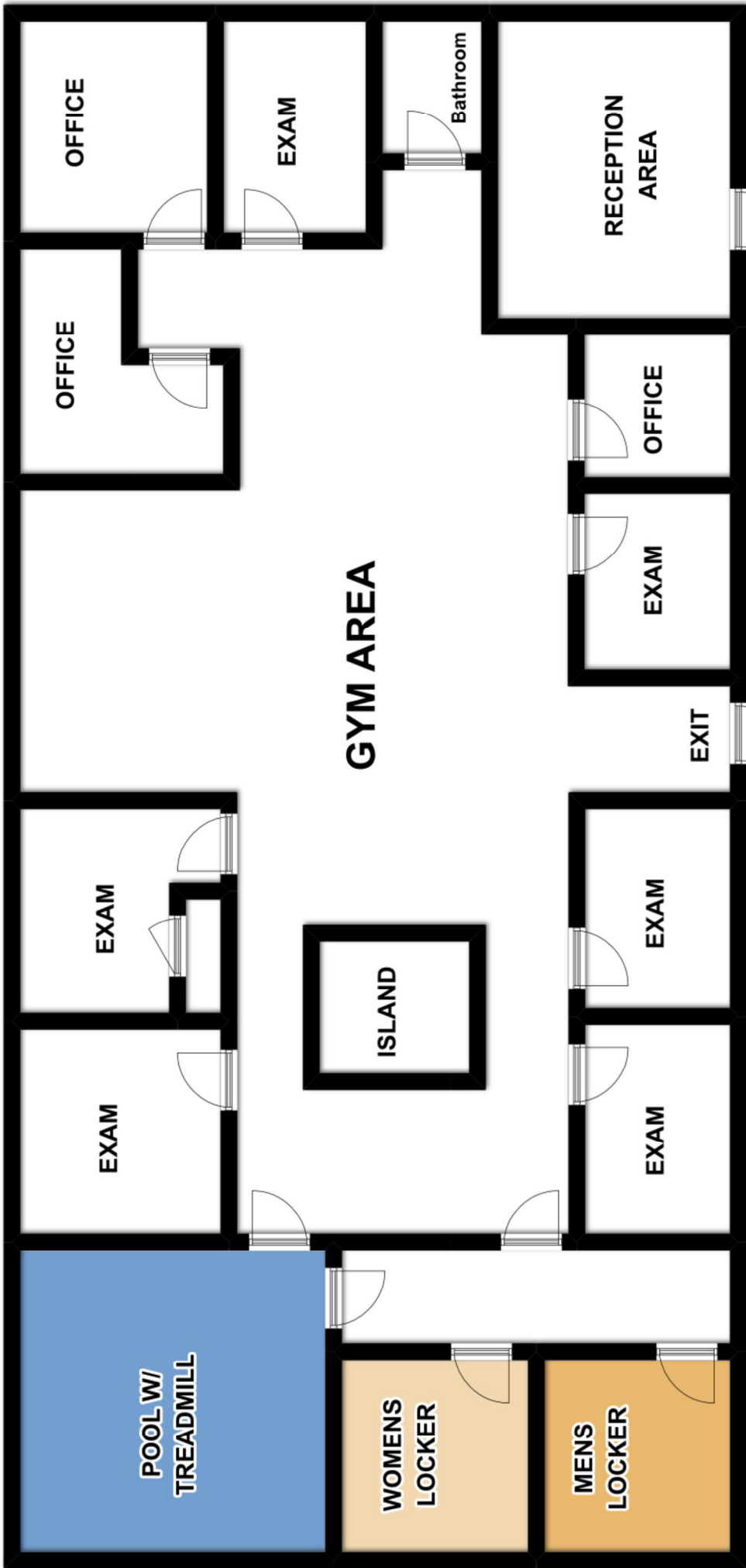
	1 Mile	3 Miles	5 Miles
Population			
Male	4,355	28,952	52,532
Female	4,418	31,412	56,938
Total Population	8,773	60,364	109,470
Housing			
Total Units	4,526	29,062	51,407
Occupied	3,754	24,588	44,904
Owner Occupied	1,961	12,112	25,770
Renter Occupied	1,793	12,476	19,134
Vacant	772	4,474	6,503
Race			
White	4,780	29,466	62,136
Black	3,028	24,130	35,379
Am In/AK Nat	8	109	170
Hawaiian	N/A	N/A	N/A
Hispanic	992	6,629	10,702
Multi-Racial	1,430	9,794	15,162

DETAILED DEMOGRAPHICS

Medical / Physical Therapy Office
624 Quaker Lane C-200 | High Point, NC 27262



Age	1 Mile	3 Miles	5 Miles	Income	1 Mile	3 Miles	5 Miles
Ages 0-4	470	3,537	6,238	Median	\$41,270	\$33,469	\$34,708
Ages 5-9	640	4,509	8,111	< \$10,000	424	3,185	4,357
Ages 10-14	630	4,281	7,827	\$10,000-\$14,999	336	2,429	3,549
Ages 15-19	616	4,251	7,814	\$15,000-\$19,999	285	1,786	2,984
Ages 20-24	558	4,144	7,490	\$20,000-\$24,999	215	1,659	2,641
Ages 25-29	508	4,029	7,044	\$25,000-\$29,999	111	1,591	2,709
Ages 30-34	496	3,979	6,729	\$30,000-\$34,999	155	1,631	2,706
Ages 35-39	538	3,956	6,765	\$35,000-\$39,999	225	1,155	2,069
Ages 40-44	593	4,002	7,108	\$40,000-\$44,999	281	1,421	2,508
Ages 45-49	654	4,098	7,464	\$45,000-\$49,999	108	1,099	1,874
Ages 50-54	637	3,875	7,258	\$50,000-\$60,000	173	1,906	4,140
Ages 55-59	583	3,541	6,762	\$60,000-\$74,000	355	2,175	4,329
Ages 60-64	482	3,061	5,924	\$75,000-\$99,999	182	1,353	4,128
Ages 65-69	375	2,520	4,843	\$10,000-\$124,999	167	852	2,005
Ages 70-74	301	2,003	3,776	\$125,000-\$149,999	132	424	1,249
Ages 74-79	212	1,567	2,888	\$150,000-\$199,999	147	472	1,037
Ages 80-84	145	1,127	2,022	> \$200,000	127	359	764
Ages 85+	335	1,884	3,407				



624 Quaker Ln
C-200
Approx. 3612 sf