



LUXURY COLLECTIONSM

o SANTOS ROAD
LOMPOC | CALIFORNIA



LAURA DRAMMER
Luxury Properties Specialist
805.448.7500
Laura@LauraDrammer,.com
LauraDrammer.com
DRE 01209580



ROBERT RAUCHHAUS
Senior Vice President, Real Estate & Business Ventures
805.705.8512
RRauchhaus@RadiusGroup.com
RadiusGroup.com
DRE 01891927

o SANTOS ROAD

Offered at \$3,800,000

Nestled in the renowned, award-winning wine region of the Santa Rita AVA, this property, known as the North Vineyard, spans 105+/- acres, offering a sanctuary of tranquil beauty with several naturally formed terraces cascading from the Mesa ridge down to the Santa Ynez River's edge.

Approximately 58+/- acres are dedicated to thriving vineyards. Varieties include Pinot Noir, Chardonnay, Grenache, Syrah, and Riesling, which yield the acclaimed fruit that contributes to the esteemed wines of Lafond Winery and Santa Barbara Winery. The ranch offers 2 wells, ensuring ample water supply, while meandering ranch roads invite leisurely exploration of the picturesque landscape.

Revel in the enchanting sunsets, hike or ride in the expansive sandy riverbed, and then build your dream home or rustic cabin retreat. Meanwhile, there's a charming camping area, providing an opportunity to immerse oneself fully in the natural splendor of this vineyard retreat immediately.

*Explore this Property
at
NorthVineyard.com*

**BERKSHIRE
HATHAWAY** | CALIFORNIA
HOMESERVICES | PROPERTIES





0 SANTOS ROAD

Lompoc, California 93436



LOT SIZE

105.23± Acres

APN

099-410-013

VINEYARD

58.26± Acres | Active

13.3± Acres | Fallow

VARIETALS

Pinot Noir

Chardonnay

Grenache

Syrah

Riesling



YEARS PLANTED

Block 1: 1983 *Fallow

Block 2: 1990 *Fallow

Block 3 & 22: 1998

Block 4 - 8, 14 & 17: 2008

Block 9-13: 2007

Block 15: 2002

Block 16: 2014

Block 18 - 19: 2003

Block 20: 2003 *Fallow

Block 21: 1992

Block 23 -25: 2006

Block 26: 1974 *Fallow

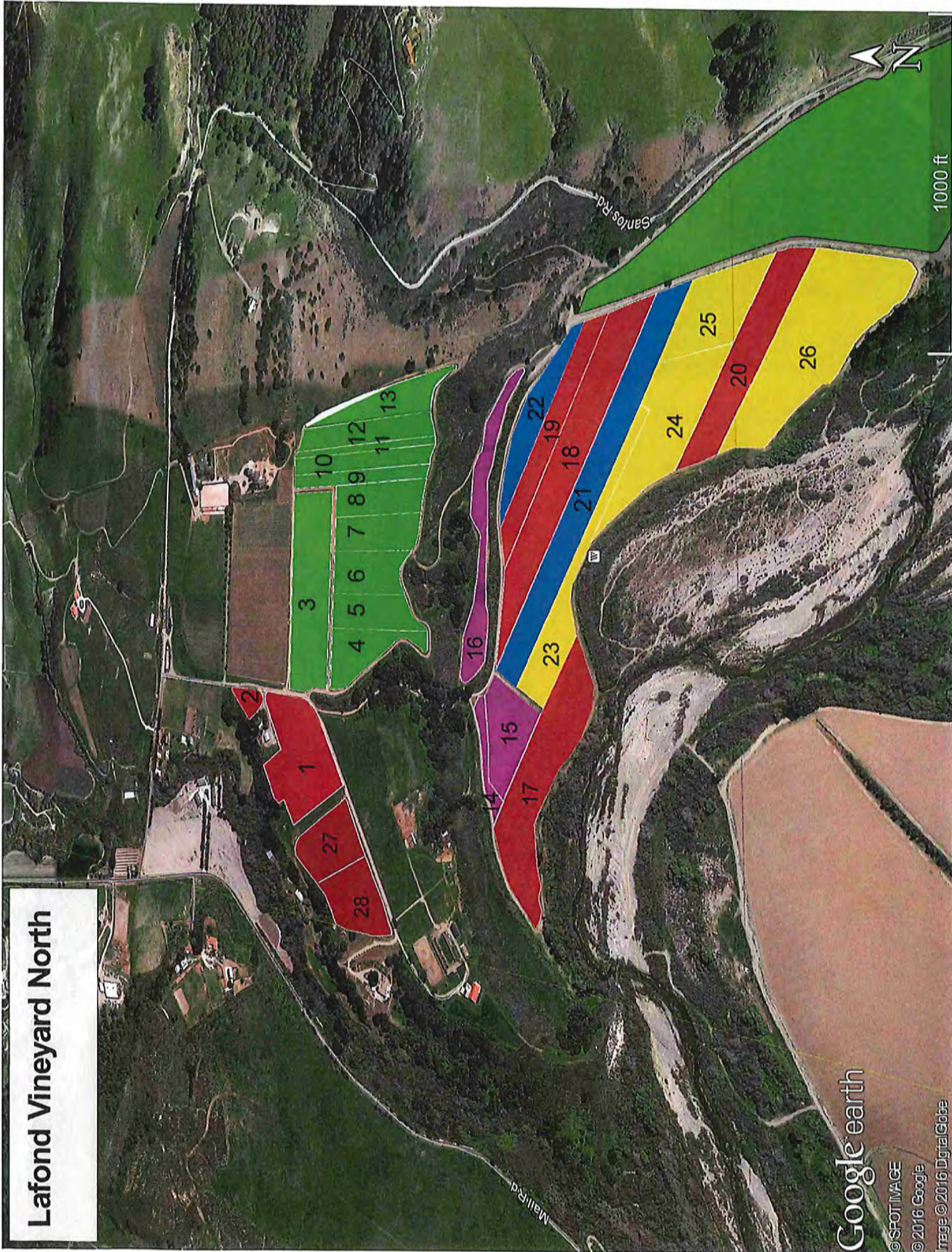
Block 27-28: 2016

BERKSHIRE HATHAWAY | CALIFORNIA
HOMESERVICES | PROPERTIES

Laura Drammer | 805.448.7500 | LauraDrammer.com | Laura@LauraDrammer.com
Robert Rauchhaus | 805.705.8512 | RadiusGroup.com | RRauchhaus@RadiusGroup.com

© 2024 Berkshire Hathaway HomeServices California Properties (BHHSCP) is a member of the franchise system of BHH Affiliates LLC. BHH and the BHH symbol are registered service marks of Columbia Insurance Company, a Berkshire Hathaway affiliate. BHH Affiliates LLC and BHHSCP do not guarantee accuracy of all data including measurements, conditions, and features of property. Information is obtained from various sources and will not be verified by broker or MLS. Buyer is advised to independently verify the accuracy of that information. DRE 01209580

Lafond Vineyard North



Google earth

© SPOT IMAGE
© 2016 Google
Image © 2016 Digital Globe

Lafond North Block Info

| Block | Name | Cultivar | Clone | Rootstock | Acres | # Rows | # Vines | Year Planted | Spacing | Trellis | Notes |
|-------|--------|----------|--------------------|--------------|-------|---------------------|---------|--------------|---------|------------|---|
| 1 | | PN | Martin Ray | Own | 5.36 | 42 | ~3170 | 1983 | 6x12 | Scott Henr | |
| 2 | | PN | Martin Ray / Mart | Own / 101-14 | 0.54 | "lots of tiny ones" | | 1990 | 4x4 | Low | Followed 2017 |
| 3 | | CH | Wente | Own | 6.15 | | 3720 | 1998 | 6x12 | | Followed 2017 |
| 4 | | CH | Hyde | 101-14 | 2.14 | 47 | 3884 | 2008 | 6x4 | | |
| 5 | | CH | 548 | 101-14 | 1 | 26 | 3575 | 2008 | 6x4 | | |
| 6 | | CH | 76 | 101-14 | 1.97 | 32 | 3811 | 2008 | 6x4 | | |
| 7 | | CH | 809 | 101-14 | 2 | 26 | 3630 | 2008 | 6x4 | | |
| 8 | | CH | Wente (vyd select) | 101-14 | 1.92 | 267??? | 3484 | 2008 | 6x4 | | |
| 9 | | CH | Wente | Freedom | 1.28 | 11 | 2323 | 2007 | 6x4 | | |
| 10 | | CH | Hyde | Freedom | 1.73 | | 3139 | 2007 | 6x4 | | |
| 11 | | CH | Wente (vyd select) | Freedom | 0.73 | 6 | 1324 | 2007 | 6x4 | | |
| 12 | | CH | 548 | Freedom | 2.14 | 16 | 3884 | 2007 | 6x4 | | |
| 13 | | CH | 76 | Freedom | 2.1 | 29 | 3811 | 2007 | 6x4 | | |
| 14 | | GREN | A | 1103P | 0.5 | | | 2008 | 6x6 | | |
| 15 | | GREN | TC1 | 1103P | 1.8 | 52 | 3025 | 2002 | 6x6 | VSP | |
| 16 | | GREN | Chateaux Rayas | 101-14 | 2.33 | | | Early 2014 | 6x4 | VSP | Bench previously planted w/ Riesling, pulled after 2013 |
| 17 | | PN | Wente (vyd select) | OR | 5 | 4.46 | 9075 | 2008 | 6x4 | VSP | |
| 18 | LVN777 | PN | 777 | 5C | 4.5 | 26 | 8167 | 2003 | 6x4 | VSP | |
| 19 | LVN828 | PN | 828 | 5C | 2.5 | 18 | 4537 | 2003 | 6x4 | VSP | Followed 2017 |
| 20 | | PN | 667 | Freedom | 2.5 | | 4357 | 2003 | 6x4 | | |
| 21 | | SYR | Estrella | Chenin Blan | 4.76 | 11 | 2964 | 1992 | 12x6 | VSP | Grafted to Chenin Blanc |
| 22 | | SYR | 1 | 14DR | 1.51 | 22 | 2420 | 1998 | 6x6 | VSP | |
| 23 | | RIES | "new" Reisling | 1103P/Salt | 2.45 | 41 | | 2006 | 6x4 | VSP | |
| 24 | | RIES | "new" Reisling | Creek/ 5C | 4.55 | | 12705 | 2006 | 6x4 | | |
| 25 | | RIES | "new" Reisling | | | | | 2006 | 6x4 | | |
| 26 | | RIES | "old" Riesling | Own | 4.9 | 30 | 4325 | 1974 | 12x6 | VSP | Followed 2017 |
| 27 | | PN | 37 | 101-14 | 2.6 | | | 2016 | | | |
| 28 | | CH | 17 | Freedom | 2.6 | | | 2016 | | | |

Active 58.26

Fallow 13.3

NORTH VINEYARD

BUELLTON | CALIFORNIA



BERKSHIRE HATHAWAY | CALIFORNIA
HOMESERVICES | PROPERTIES

LAURA DRAMMER | 805.448.7500 | LAURA@LAURADRAMMER.COM | DRE 01209580

ROBERT RAUCHHAUS | 805705.8512 | RRAUCHHAUS@RADIUSGROUP.COM | DRE 01891927

© 2024 Berkshire Hathaway HomeServices California Properties (BHHS CP) is a member of the franchise system of BHH Affiliates LLC. BHHS and the BHHS symbol are registered service marks of Columbia Insurance Company, a Berkshire Hathaway affiliate. BHH Affiliates LLC and BHHS CP do not guarantee accuracy of all data including measurements, conditions, and features of property. Information is obtained from various sources and will not be verified by broker or MLS. Buyer is advised to independently verify the accuracy of that information. DRE 01209580