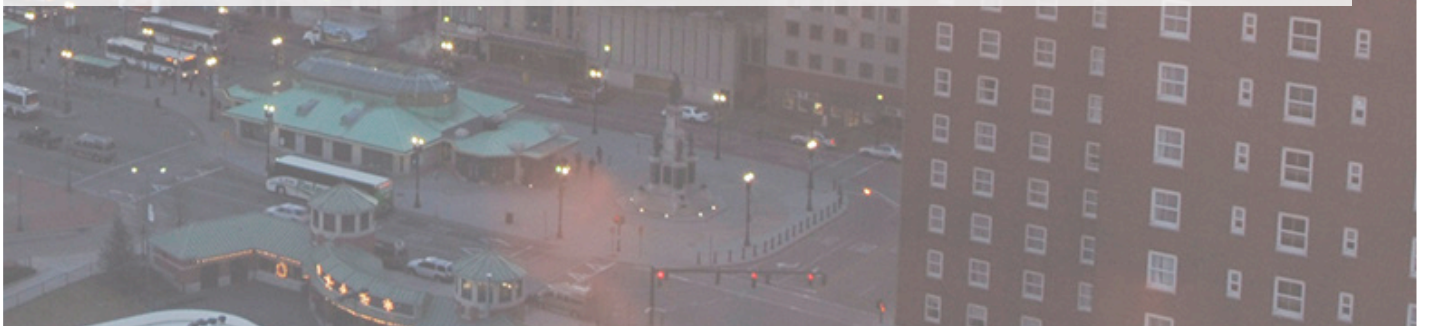


sweeney

REAL ESTATE & APPRAISAL

INDUSTRIAL FOR LEASE

195 DUPONT DRIVE PROVIDENCE - RHODE ISLAND



One Turks Head Place, Suite 850 • Providence, Rhode Island 02903
T: 401.331.9300 • F: 401.331.9306 • www.sreari.com



KEVIN CASEY | KCASEY@SREARI.COM | 401-331-9300 | 401-464-2663

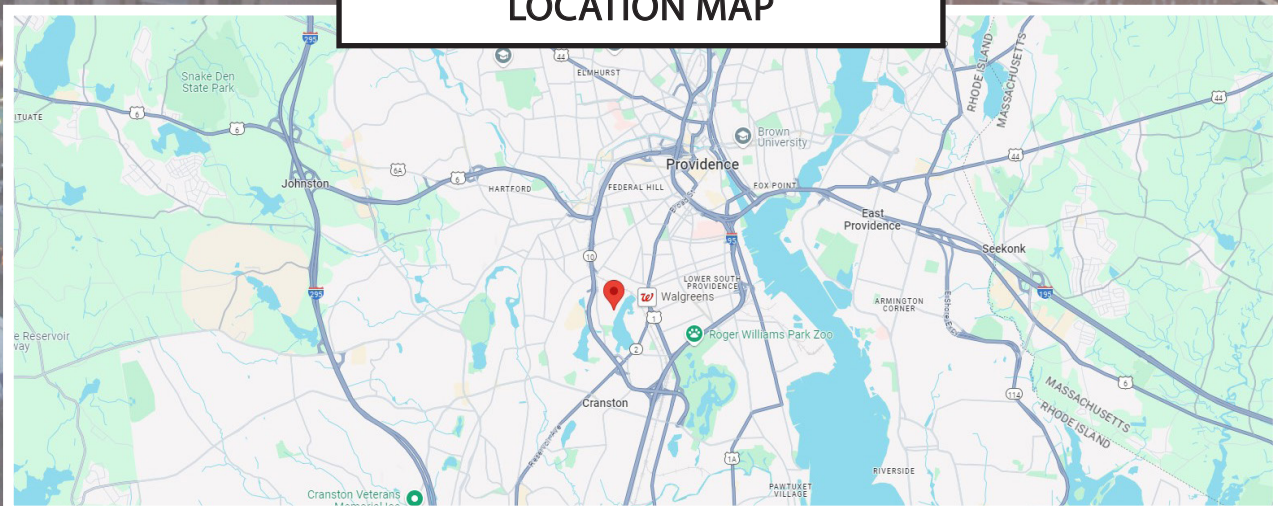
195 DUPONT DRIVE PROVIDENCE - RHODE ISLAND

RENTAL RATE: \$15/SF
LEASE TYPE: NNN

PROPERTY DETAILS

- Office, Clean Lab Space & Warehouse Space
- 29,100± SF Available
- Twelve (12) Private Offices
- Open Office Area
- Five (5) Conference Rooms
- Six (6) Clean Rooms
- 12 FT Ceiling Heights
- 600 to 1,200 AMPS, 480V 3 Phase Power
- Shared Loading Dock
- Built in 1970
- On/Off RT-10
- Quick to I-95 & RT-6

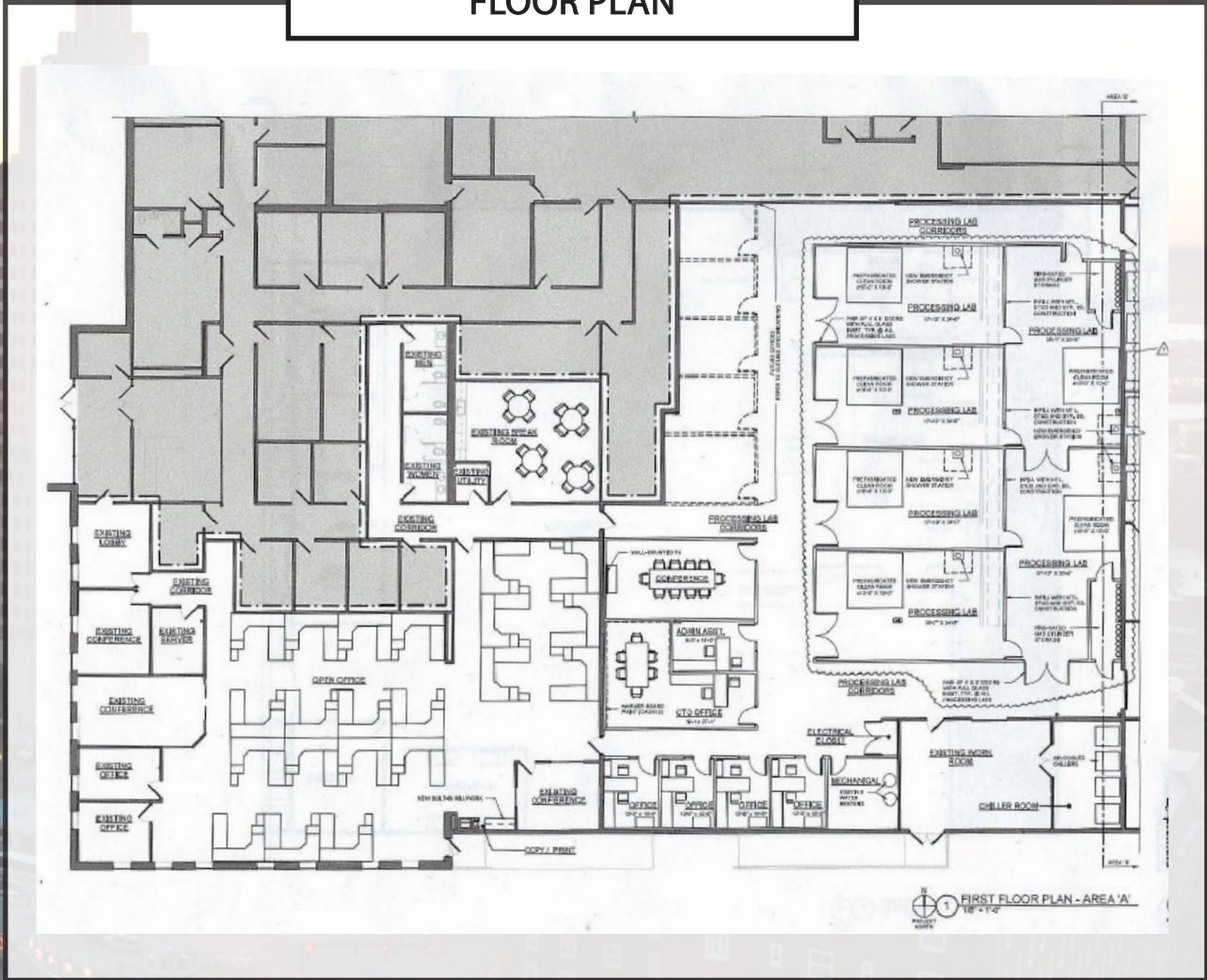
LOCATION MAP



KEVIN CASEY | KCASEY@SREARI.COM | 401-331-9300 | 401-464-2663

**195 DUPONT DRIVE
 PROVIDENCE - RHODE ISLAND**

FLOOR PLAN

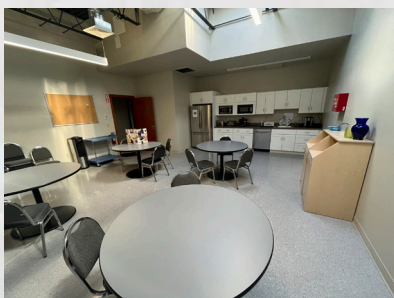
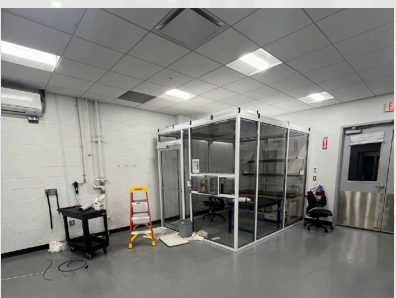
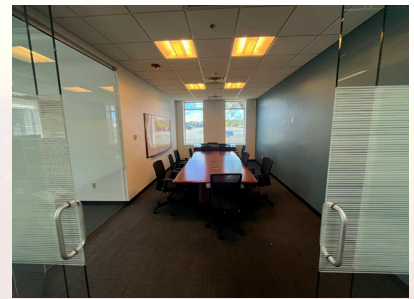


KEVIN CASEY | KCASEY@SREARI.COM | 401-331-9300 | 401-464-2663

All information furnished regarding property for sale, rental or financing is from sources deemed reliable. But no warranty or representation is made as to the accuracy thereof and same is submitted subject to errors, omissions, change or price, rental or other conditions, prior sale lease or financing or withdrawal without notice.

195 DUPONT DRIVE PROVIDENCE - RHODE ISLAND

ADDITIONAL PHOTOS



All information furnished regarding property for sale, rental or financing is from sources deemed reliable. But no warranty or representation is made as to the accuracy thereof and same is submitted subject to errors, omissions, change or price, rental or other conditions, prior sale lease or financing or withdrawal without notice.



One Turks Head Place, Suite 850 • Providence, Rhode Island 02903
T: 401.331.9300 • F: 401.331.9306 • www.sreari.com

