



FORT LAUDERDALE, FLORIDA

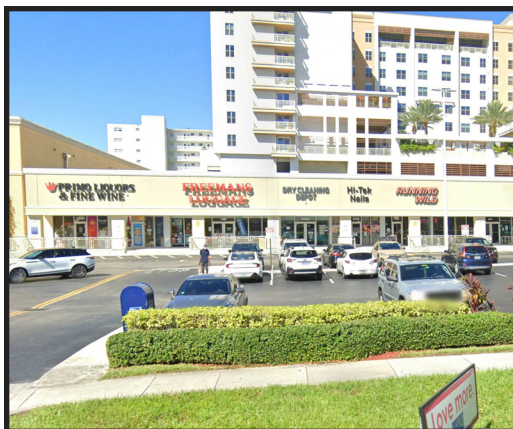
Galleria Plaza

2541 - 2595 E. Sunrise Boulevard
Fort Lauderdale, Florida 33304

LAT: 26.138636 | **LONG:** -80.111466

GLA: 24,807 SQ. FT

TRAFFIC COUNTS: 27,000 DAILY



Galleria Plaza is a 25,000 square foot center located on E. Sunrise Boulevard, directly across from the Galleria Mall, in Fort Lauderdale, Florida.

The Center is shadow-anchored by Publix and Starbucks and offers great visibility for all tenants from busy E. Sunrise Boulevard. Across the street, the Galleria Mall is home to Apple, Dillard's, H&M, Macy's, Sephora, and stand out restaurants such as Blue

Martini, Cooper's Hawk, P.F. Chang's, Seasons 52 and The Capital Grille. The surrounding trade area is densely populated with over 253,000 residents within a 5-mile radius with an average household income of approximately \$156,000 within a 1-mile radius.

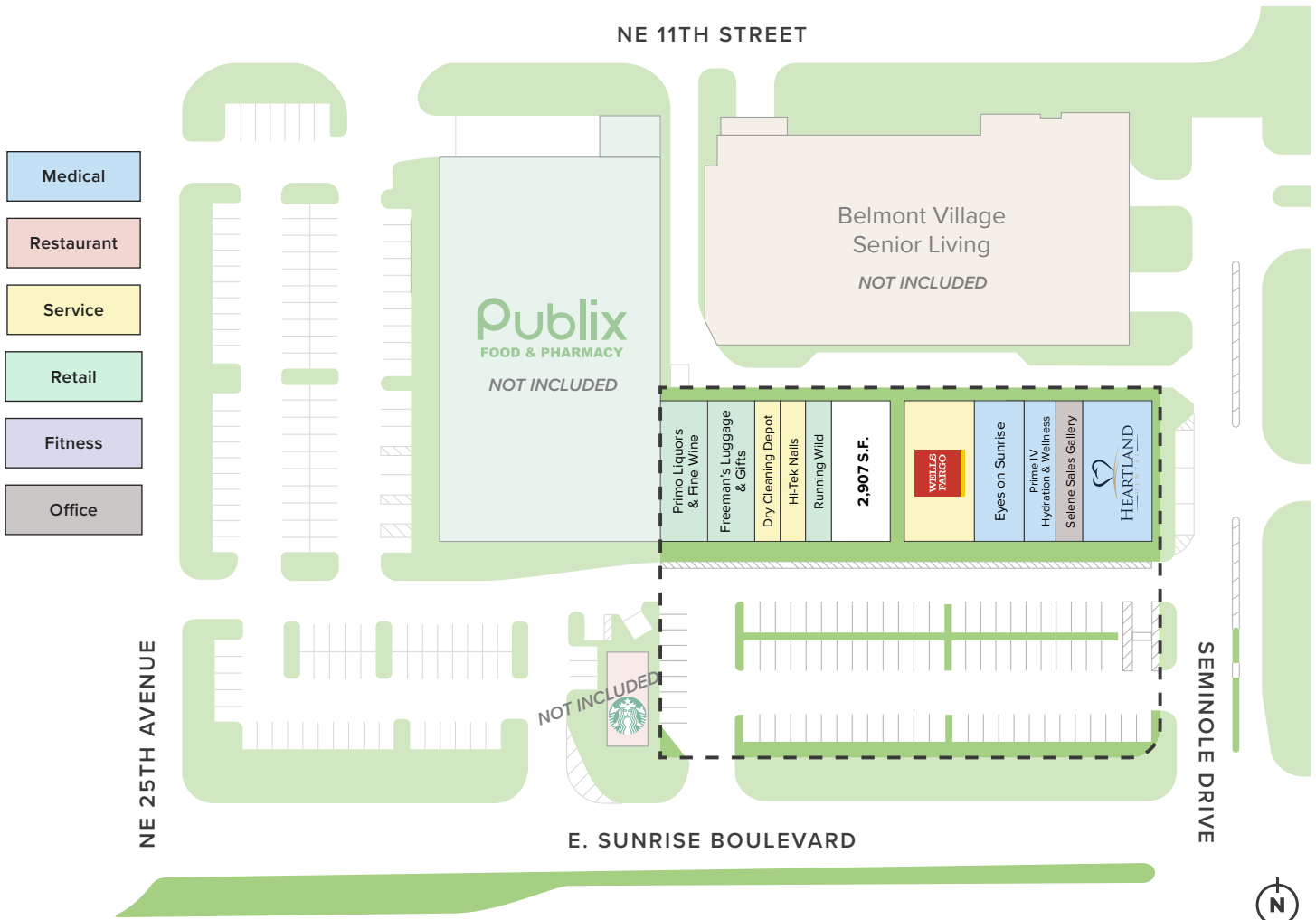
NOW LEASING!

Leasing Agent: Sandi Rogacki

(954) 821-4222 | srogacki@woolbright.net

GALLERIA PLAZA

Fort Lauderdale, FL



2024 est. Demographics

	1 Mile	3 Mile	5 Mile
POPULATION	13,630	124,262	253,066
HOUSEHOLDS	7,585	65,189	119,679
AVERAGE HOUSEHOLD INCOME	\$156K	\$131K	\$118K
MEDIAN AGE	52	47	44
DAYTIME EMPLOYMENT	10,728	111,531	216,081
TRAFFIC COUNTS	27,000 Cars Daily		

Key Tenants

- ▶ Wells Fargo
- ▶ Heartland Dental
- ▶ Prime IV Hydration & Wellness
- ▶ Primo Liquors
- ▶ & Fine Wine
- ▶ Hi-Tek Nails
- ▶ Eyes on Sunrise
- ▶ Freeman's Luggage & Gifts

NOW LEASING!

WOOLBRIGHT DEVELOPMENT, INC.

3200 N. Military Trail, 4th Floor, Boca Raton, FL 33431 / 561-989-2240 / woolbright.net