



**CUSHMAN &
WAKEFIELD**

HAYES & SHERRY

FOR SALE OR LEASE

146 Westminster Street

Providence, RI 02903

±4,285 SF Office Space Available
Lease Rate: \$19.50/SF, net electric

Property Highlights

- 4,285 SF PER FLOOR; HIGH END OFFICE CONDO
- RECENTLY RENOVATED LOBBY
- MODERN SPACE WITH HIGH CEILINGS AND WOOD ACCENTS
- LARGE WINDOWS WITH NATURAL LIGHT ON THREE SIDES OF SPACE
- FANTASTIC OWNER USER OR INVESTMENT OPPORTUNITY IN THE FINANCIAL DISTRICT

Amenities

- DOWNTOWN LOCATION IN CENTRAL BUSINESS DISTRICT
- CLOSE TO CITY HALL, COURTS AND NUMEROUS RESTAURANTS
- WALKING DISTANCE TO BUS TERMINAL AND MBTA STATION
- EASY HIGHWAY ACCESS

OFFICE CONDOS AVAILABLE 4TH FLOOR

Purchase Price: \$579,000



For more information, please contact:

Steve Flachbart
Sr. Vice President
+1 401 443 6576
sflachbart@hayessherry.com

Dave Lucivero
Partner
+1 401 273 2068
dlucivero@hayessherry.com

146 Westminster Street, 2nd floor
Providence, RI 02903
phone: +1 401 273 1980
hayessherry.com

Independently Owned and Operated / A Member of the Cushman & Wakefield Alliance

Cushman & Wakefield Copyright 2024 No warranty or representation, express or implied, is made to the accuracy or completeness of the information contained herein, and same is submitted subject to errors, omissions, change of price, rental or other conditions, withdrawal without notice, and to any special listing conditions imposed by the property owner(s). As applicable, we make no representation as to the condition of the property (or properties) in question.

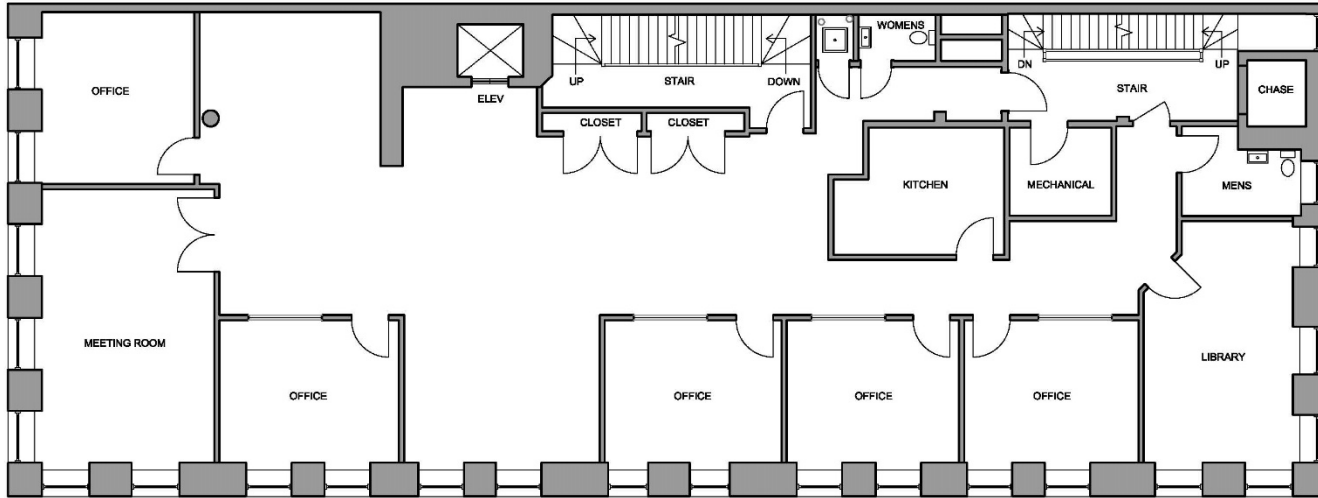


HAYES & SHERRY

FOR SALE OR LEASE

146 Westminster Street

Providence, RI 02903



1
A1

146 WESTMINSTER ST LEVEL 4

SCALE : 1/8" = 1'-0"



Reception Area



Elevator Entrance Opens to 4th Floor Suite



Kitchenette



Meeting Room



Office



Office