

AVAILABLE FOR SUBLEASE
23,300 SF



1253 Naperville Drive

Romeoville, IL

23,300 SF

Available for Sublease

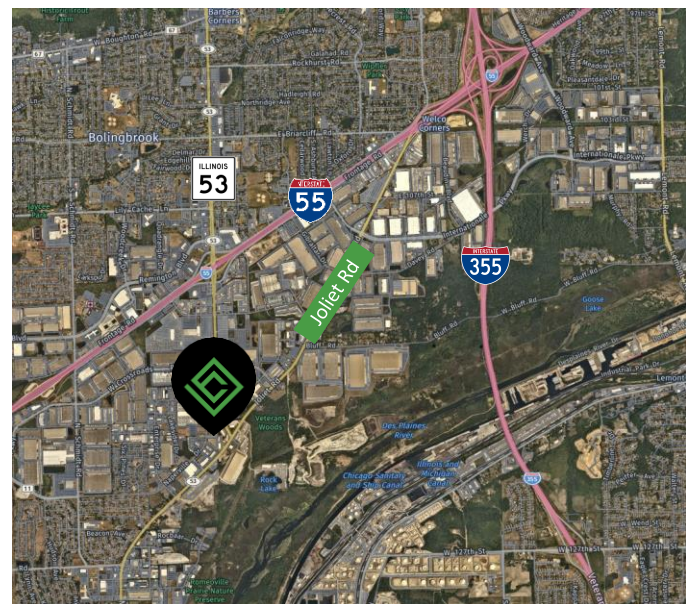
±10%

Office

Available
Immediately

Specifications

Available	±23,300 SF for Sublease
Building Size	73,600 SF
Office	± 10%
Ceiling Height	24'
Loading	3 exterior docks, 1 drive-in door
Term	Sublease through September 2028
Lease Rate	\$8.00 net psf
Location	Easy access to I-55 via Route 53 or Joliet Road



MATTHEW LEE

Partner

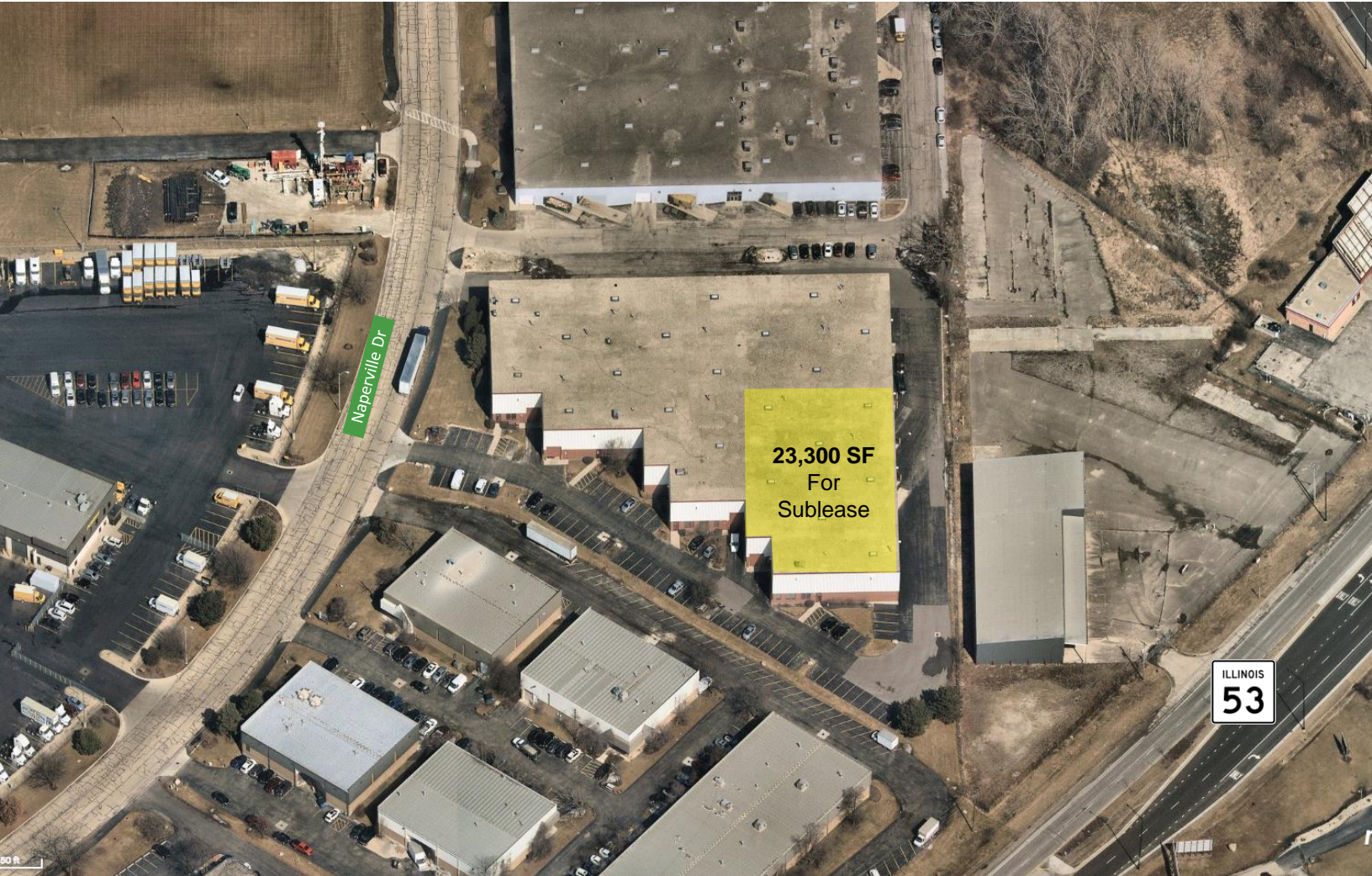
mlee@coreindrealty.com

630-786-2341

1253 Naperville Drive
Romeoville, IL

23,300 SF

For
Sublease



CORE INDUSTRIAL REALTY

1211 W. 22nd Street, Suite 529
Oak Brook, IL 60523
coreindrealty.com | 630-786-2424

Submitted subject to error, change in status or withdrawal without notice.

MATTHEW LEE

Partner

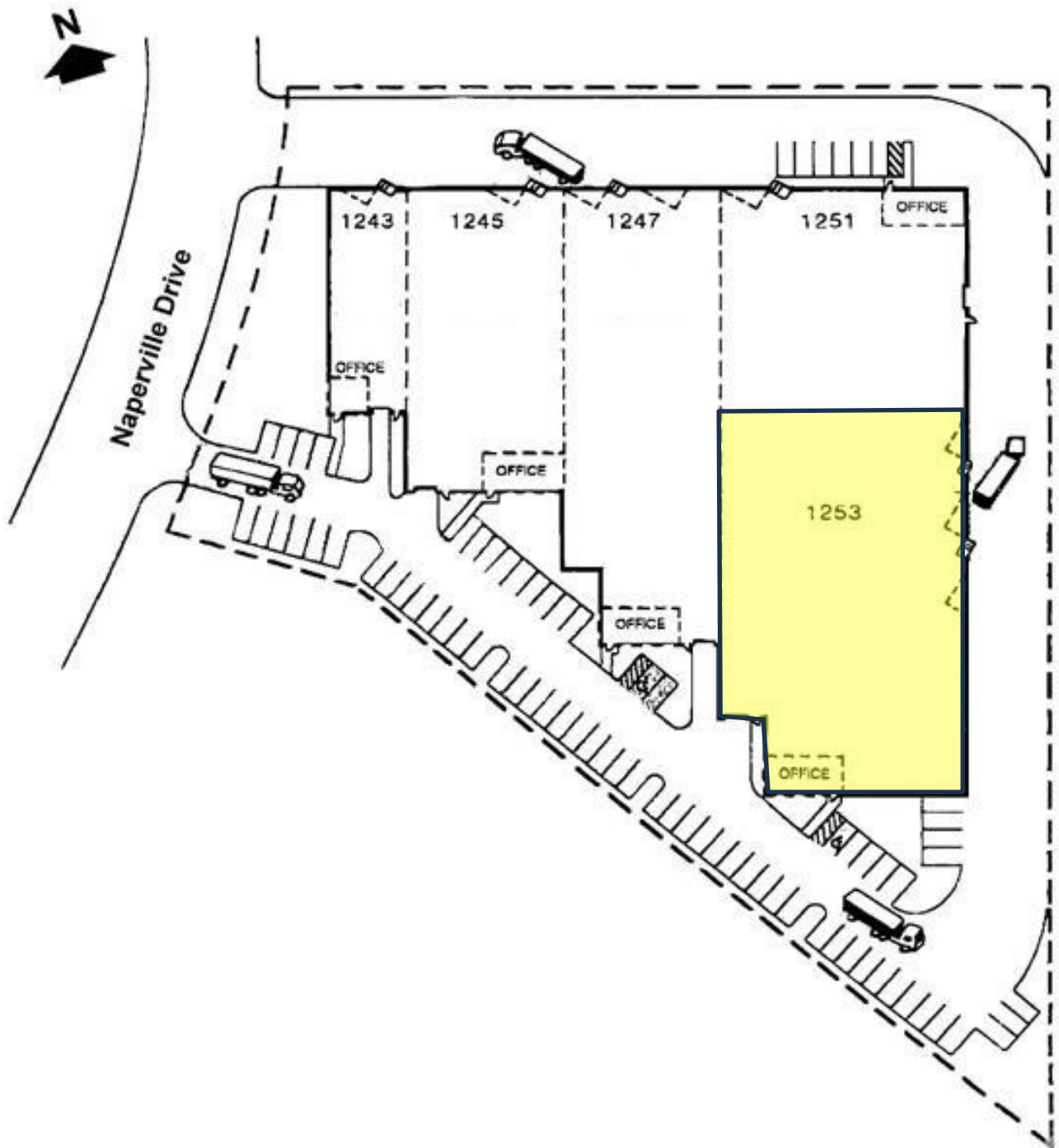
mlee@coreindrealty.com

630-786-2341

1253 Naperville Drive
Romeoville, IL

23,300 SF

For
Sublease



CORE INDUSTRIAL REALTY

1211 W. 22nd Street, Suite 529
Oak Brook, IL 60523
coreindrealty.com | 630-786-2424

MATTHEW LEE
Partner
mlee@coreindrealty.com
630-786-2341