

2,192 SF RETAIL FOR LEASE ON MAYFIELD ROAD!

5701 MAYFIELD ROAD, MAYFIELD HEIGHTS, OHIO 44124

FOR LEASE



**LOCATED DIRECTLY
ACROSS FROM THE
GREENS OF LYNTHURST!**

Connor Ambrose
Associate
216 535 4730
connor.ambrose@cbre.com

Kevin Moss
Senior Vice President
216 363 6453
kevin.moss@cbre.com

CBRE

THE OPPORTUNITY

5701 MAYFIELD ROAD, MAYFIELD HEIGHTS, OHIO 44124

- 2,192 SF Retail For Lease on Mayfield Road!
- The space features a large open sales floor, a back office for employees, one ADA restroom, and mechanical room
- Ample parking available in the front for customers and employees
- Strong traffic counts of 24,342 VPD along Mayfield Rd (Source: ODOT TIMS)
- Located directly across from The Greens of Lyndhurst including Fifth Third Bank, Applebee's, Allstate Insurance, Don Ramons, Kindercare Learning Center and more!
- The site has a population of 76,618 people and average household incomes of \$116,208 within a 3-mile radius



CONTACT US:

Connor Ambrose

Associate
216 535 4730
connor.ambrose@cbre.com

Kevin Moss

Senior Vice President
216 363 6453
kevin.moss@cbre.com

2024 QUICK STATS – 3 MILE RADIUS



DAYTIME
POPULATION
82,256



POPULATION
76,618



HOUSEHOLDS
34,148

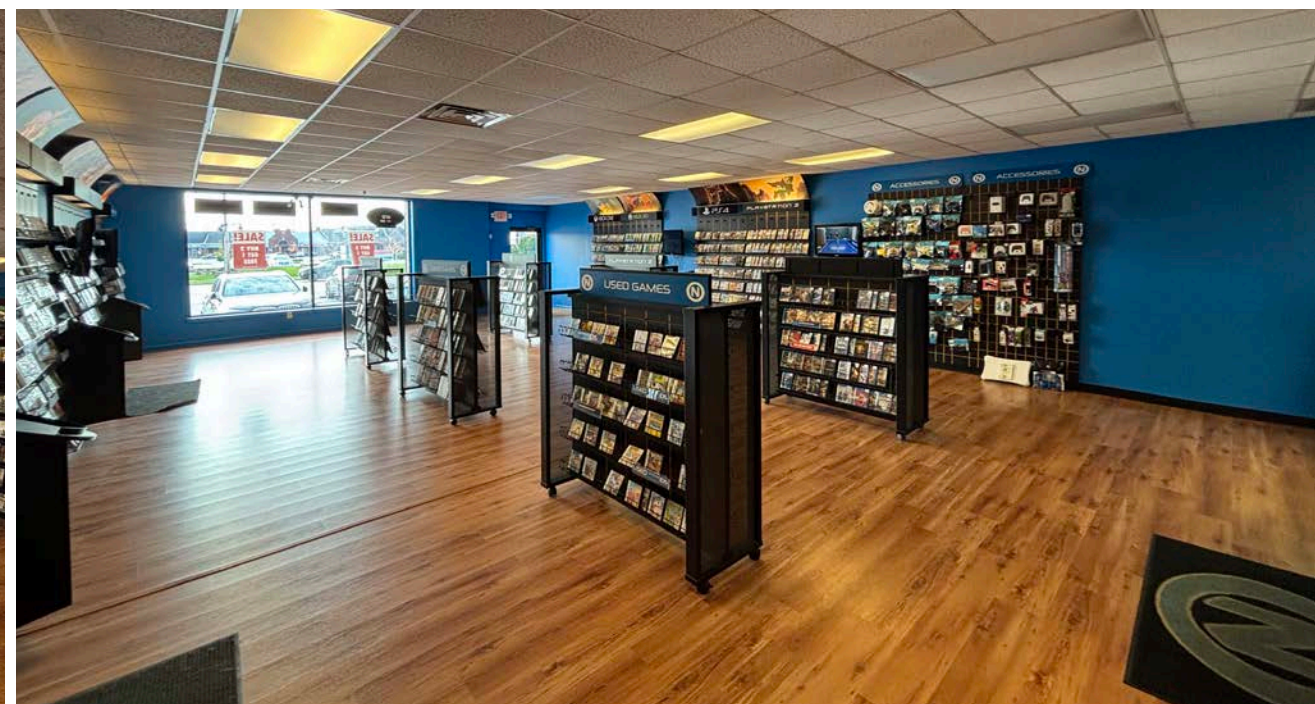
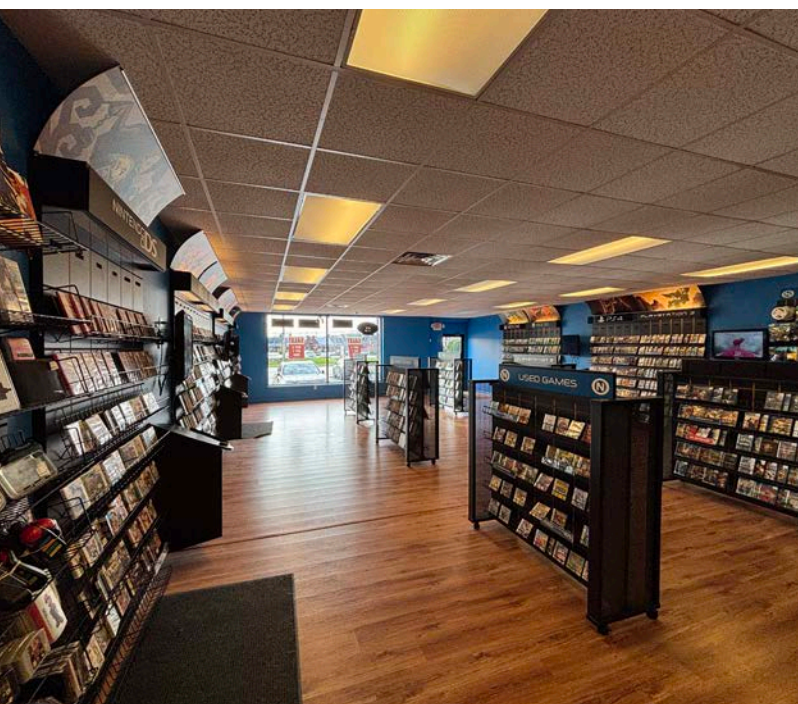


POPULATION
25 & OVER
56,742



AVG. HOUSEHOLD
INCOME
\$116,208

INTERIOR PICTURES



RETAIL TRADE MAP

Mayfield-Lyndhurst-Highland Heights RETAIL TRADE AREA

TRADE AREA INFO

I-271 & Mayfield Road
(3 Miles)

- Population: 50,470
- Daytime Population: 59,914
- Total Households: 23,137
- Median HH Income: \$88,287
- Total Businesses: 2,139
- Total Employees: 39,088

MAJOR OFFICE BUILDINGS

±10.7 Million Sq. Ft. (3 Miles)
(Source, CoStar)

- Progressive Complex - 660,000 SF
- Rockwell Automation - 460,000 SF
- Progressive Insurance - 426,000 SF
- Landerhaven Corporate Park - 231,696 SF

HOTELS

4 Hotels / 465 Rooms

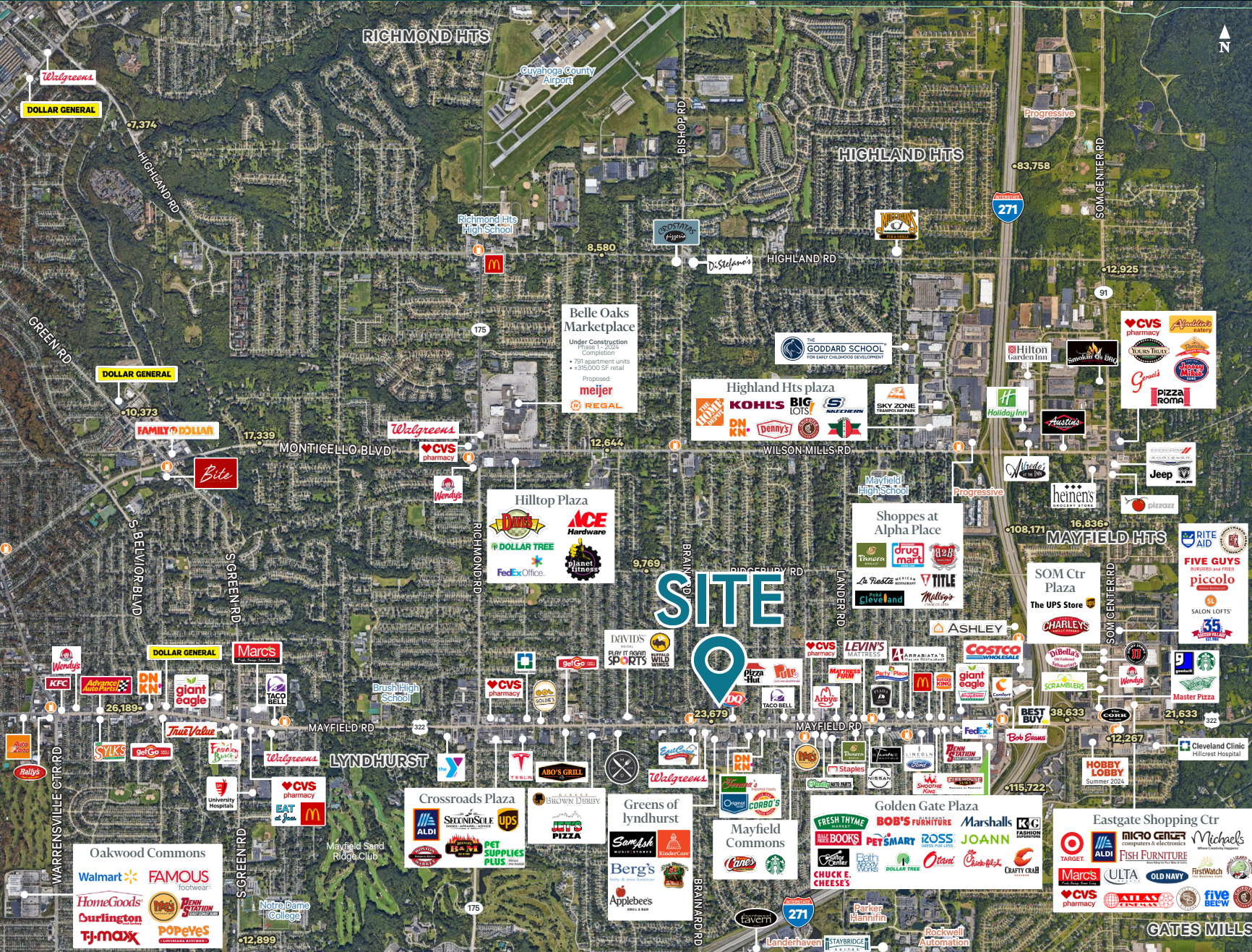
- Hilton Garden Inn - 128 Rooms
- Staybridge Suites - 123 Rooms
- Holiday Inn - 115 Rooms
- Comfort Inn - 99 Rooms

MAJOR EMPLOYERS

- Progressive - ±4,000
- Cleveland Clinic (Hillcrest) - 2,073
- Rockwell Automation - 1,500
- Parker Hannifin - 800
- Mayfran International - 250

© 2024 CBRE, Inc. All rights reserved. This information has been obtained from sources believed reliable, but has not been verified for accuracy or completeness. You should conduct a careful, independent investigation of the property and verify all information. Any reliance on this information is solely at your own risk. CBRE and the CBRE logo are service marks of CBRE, Inc. All other marks displayed on this document are the property of their respective owners, and the use of such logos does not imply any affiliation with or endorsement of CBRE. Licensed Real Estate Broker.

Updated: December 6, 2024



DEMOGRAPHICS

	1 Mile	3 Miles	5 Miles
2024 Population	13,958	76,618	179,168
2024 Daytime Population	9,744	82,256	196,552
2024 Households	6,033	34,148	78,906
2024 Average Household Income	\$100,379	\$116,208	\$115,384
2029 Projected Average Household Income	\$120,488	\$135,887	\$134,662
2024 Median Household Income	\$82,711	\$82,443	\$76,038
Population 25 and Over	10,256	56,742	128,768

CONTACT US

Connor Ambrose

Associate

216 535 4730

connor.ambrose@cbre.com

Kevin Moss

Senior Vice President

216 363 6453

kevin.moss@cbre.com

© 2024 CBRE, Inc. All rights reserved. This information has been obtained from sources believed reliable, but has not been verified for accuracy or completeness. You should conduct a careful, independent investigation of the property and verify all information. Any reliance on this information is solely at your own risk. CBRE and the CBRE logo are service marks of CBRE, Inc. All other marks displayed on this document are the property of their respective owners, and the use of such logos does not imply any affiliation with or endorsement of CBRE. Photos herein are the property of their respective owners. Use of these images without the express written consent of the owner is prohibited. Licensed Real Estate Broker.

CBRE