



JOIN A COLLECTIVE OF ARTISANS

SODO Urbanworks serves as a gathering spot in South Seattle's SODO district. It houses some of the best food, drinks, and people. A community of crafters, striving to engage your taste buds.

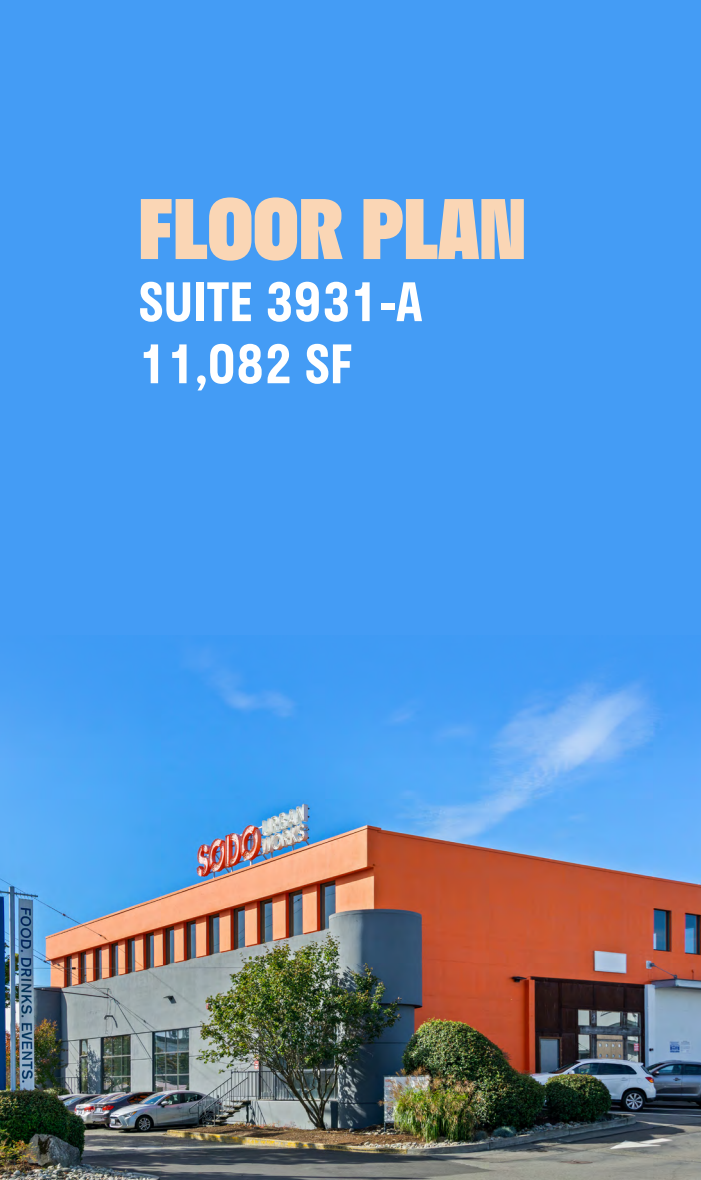
**Come as you
are and spend
some time here!**



FLOOR PLAN

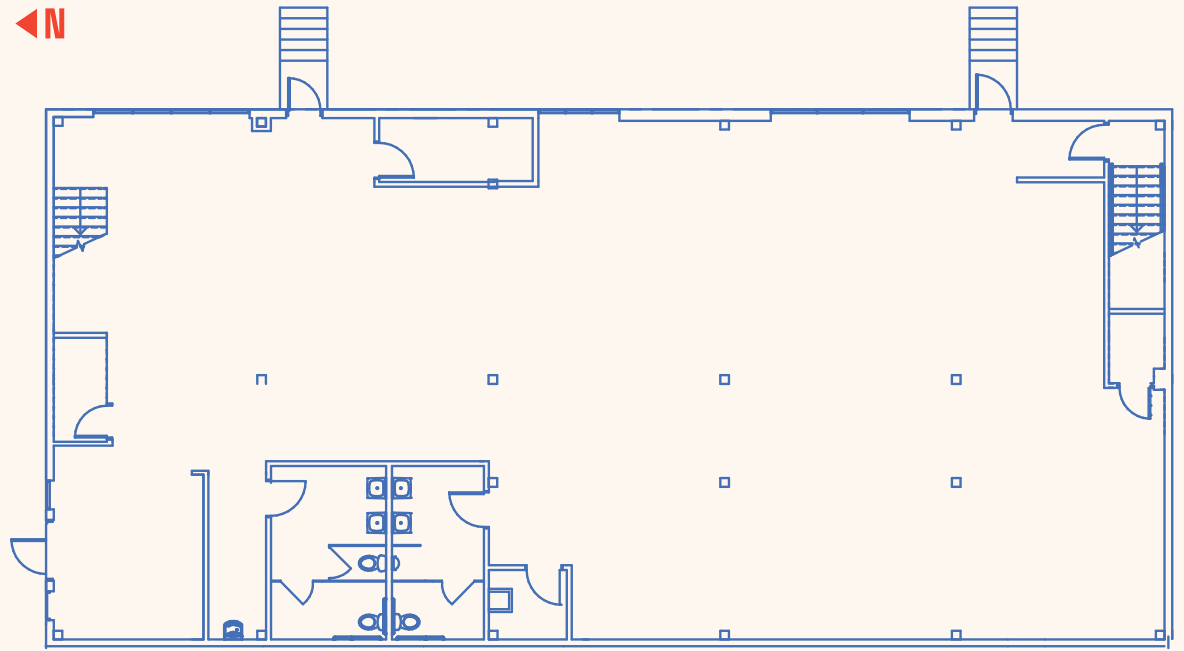
SUITE 3931-A

11,082 SF



Ground Floor

4,667 SF



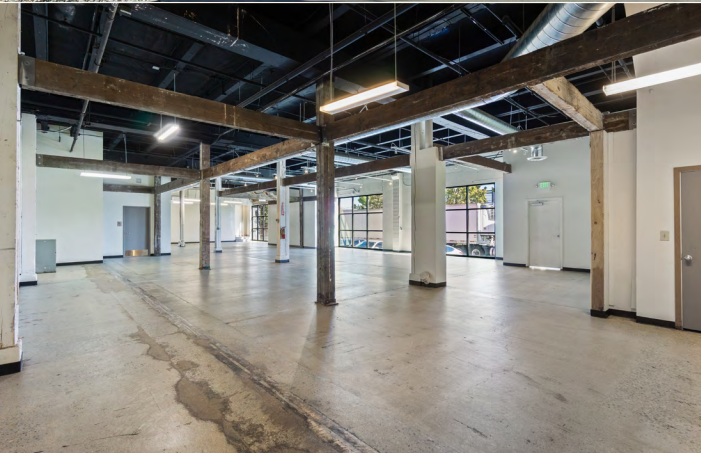
First Avenue



High image corner unit with
frontage to 1st Avenue



14' clear height on
the showroom



FLOOR PLAN

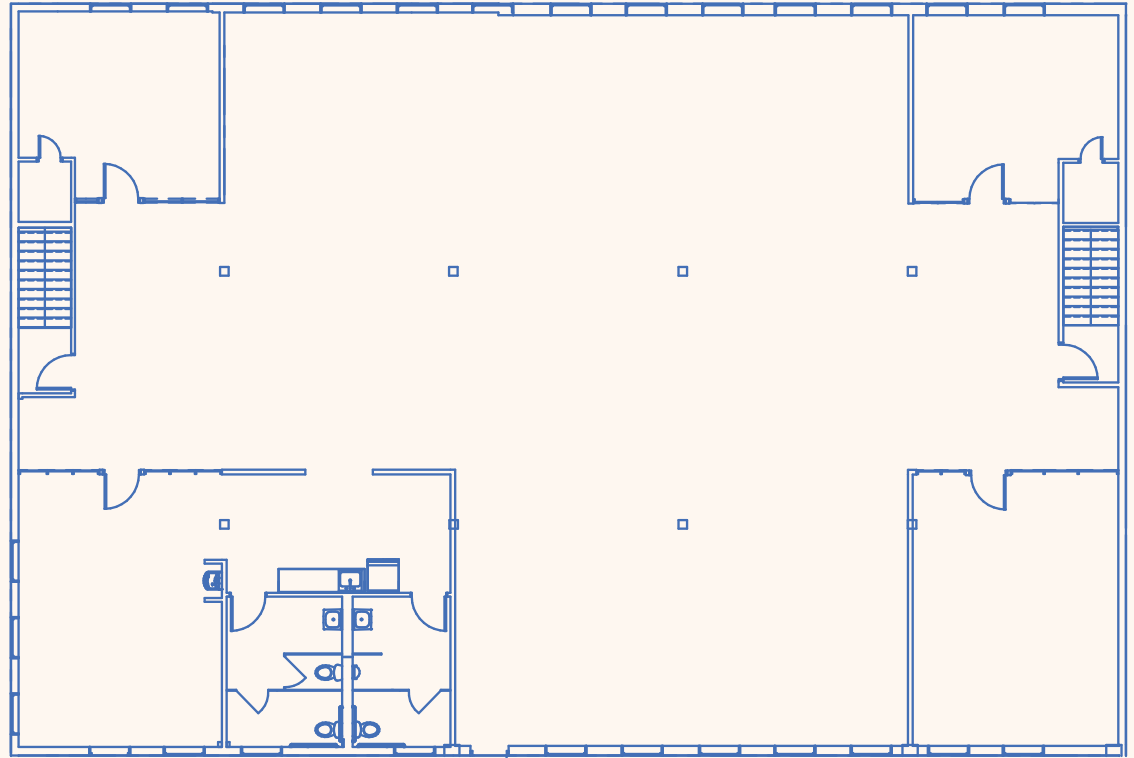
SUITE 3931-A

11,082 SF



Mezzanine

6,415 SF



High image corner unit with frontage to 1st Avenue



14' clear height on the showroom



FLOOR PLAN

SUITE 3849-A: 4,509 SF

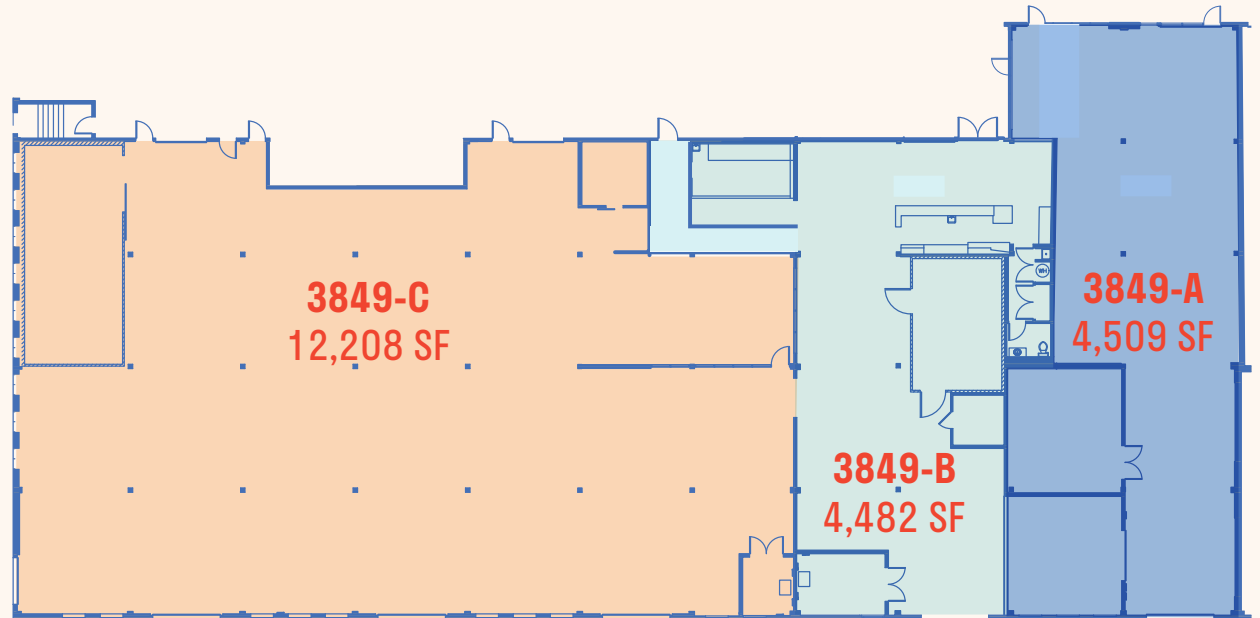
SUITE 3849-B: 4,482 SF

SUITE 3849-C: 12,208 SF

CAN BE COMINED FOR A
TOTAL OF 21,199 SF



WINE TASTING ROOM AND PRODUCTION SPACE



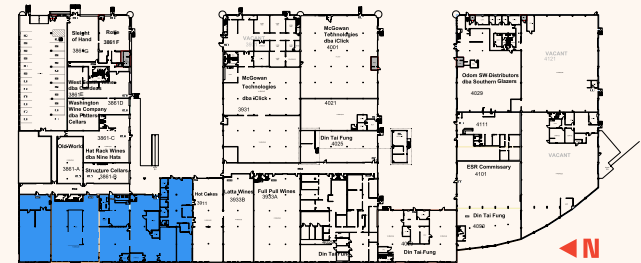
Prime anchor tenant suite with
existing tasting room, kitchen,
and production improvements




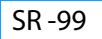




High visibility out to 1st Avenue

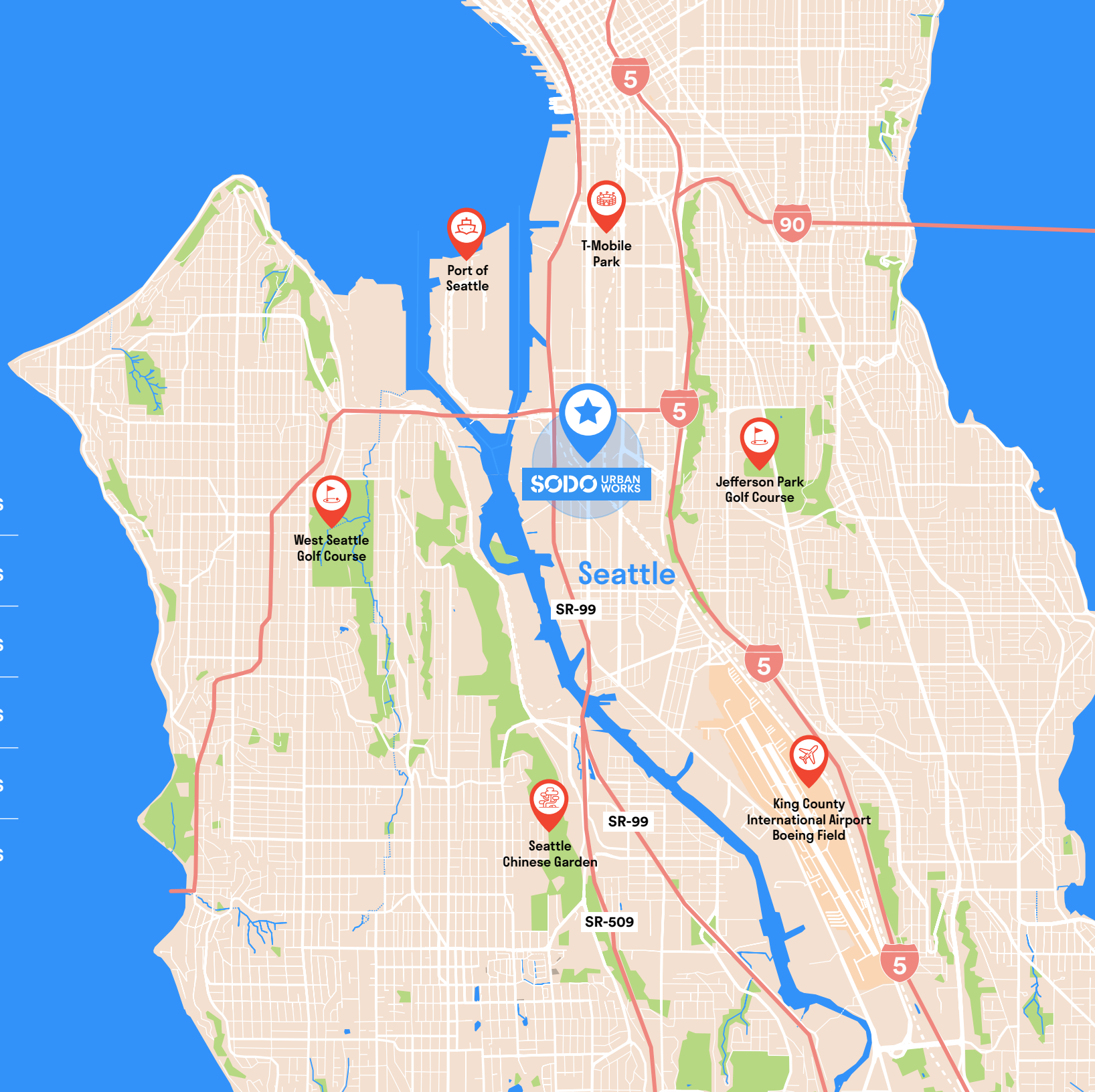


Available within +/- 30 days



LOCATION

	4 minutes
	4 minutes
	5 minutes
	6 minutes
	6 minutes
	8 minutes



SODO URBAN WORKS



BAILEY HALLIS

+1 206 777 5203

bailey.hallis@jll.com

JAKE BOS

+1 425 974 4086

jake.bos@jll.com

Although information has been obtained from sources deemed reliable, neither Owner nor JLL makes any guarantees, warranties or representations, express or implied, as to the completeness or accuracy as to the information contained herein. Any projections, opinions, assumptions or estimates used are for example only. There may be differences between projected and actual results, and those differences may be material. The Property may be withdrawn without notice. Neither Owner nor JLL accepts any liability for any loss or damage suffered by any party resulting from reliance on this information. If the recipient of this information has signed a confidentiality agreement regarding this matter, this information is subject to the terms of that agreement.
©2025 Jones Lang LaSalle IP, Inc. All rights reserved.

