

RETAIL SPACE FOR LEASE IN RITTENHOUSE



2013 SANSOM STREET Rittenhouse Square , Philadelphia 19103 \$50 PSF

- » 1,500 +/- SF retail space for lease in Rittenhouse
- » Space runs street to street with 17' of Frontage on Sansom and rear loading on Ionic Street
- » Ideal uses: light retail, food service and hospitality, fitness, yoga studio, hair salon, day spa
- » High foot traffic location with several restaurants and entertainment venues on the same block
- » Zoning: CMX-4
- » The space is centrally located on Sansom Street, which provides close proximity to significant foot traffic coming from office, residential, and retail destinations in the heart of Center City. This location is perfectly positioned to benefit from the rapid expansion occurring in Center City and the prominent restaurants that surround this space.
- » Close to Septa bus stops, 30th Street Station, and easy access points to major transit lines

NEIGHBORS INCLUDE:



DEMOGRAPHICS

Residents within 1 mile	89,993
Average household income	\$117,618
Est. daytime population <small>(workers within 1 mile)</small>	187,936



JOE SCARPONE 267.546.1721 ■ jscarpone@mpnrealty.com

VERONICA BLUM 267.238.1728 ■ vblum@mpnrealty.com

Information concerning this offer is from sources deemed reliable and no warranty is made as to the accuracy thereof. The offering is submitted subject to errors, omissions, change in price, or other conditions, prior sale or Lease, or withdrawal without notice. The prospective tenant should carefully verify to his/her own satisfaction all information contained herein.

2013 SANSOM STREET

Rittenhouse Square , Philadelphia 19103

Property Photos



JOE SCARPONE 267.546.1721 ■ jscarpone@mpnrealty.com

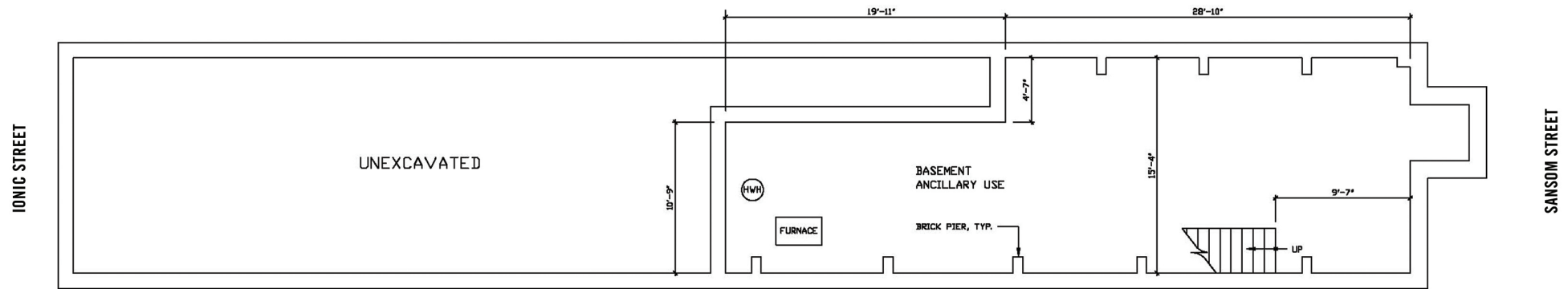
VERONICA BLUM 267.238.1728 ■ vblum@mpnrealty.com

Information concerning this offer is from sources deemed reliable and no warranty is made as to the accuracy thereof. The offering is submitted subject to errors, omissions, change in price, or other conditions, prior sale or Lease, or withdrawal without notice. The prospective tenant should carefully verify to his/her own satisfaction all information contained herein.

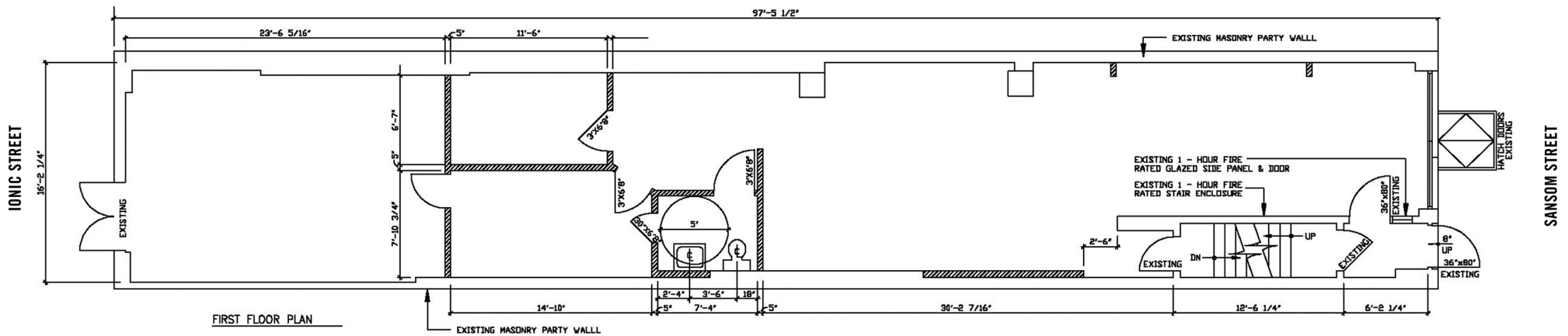
2013 SANSOM STREET

Rittenhouse Square, Philadelphia 19103

Property Photos



BASEMENT PLAN



FIRST FLOOR PLAN



JOE SCARPONE 267.546.1721 ■ jscarpone@mpnrealty.com

VERONICA BLUM 267.238.1728 ■ vblum@mpnrealty.com

2013 SANSOM STREET

Rittenhouse Square, Philadelphia 19103

Aerial Map of Neighborhood



JOE SCARPONE 267.546.1721 ■ jscarpone@mpnrealty.com

VERONICA BLUM 267.238.1728 ■ vblum@mpnrealty.com