



Prospector Place - Space Available

**708 13TH STREET
GOLDEN, COLORADO**

Area:

3,414 SF 1st Floor

2,179 SF 2nd Floor

5,593 SF Total

Lease Rate:

\$25.00/NNN

Occupancy:

Move-in Ready / Immediate

Term:

Negotiable

Office for Lease

Property Highlights

- Efficient floorplans and layouts, with internal staircase and recently completed high-end finishes
- Reception/waiting room with private street level entrance
- Large conference room, 12 private offices/huddle rooms, two separate bullpen areas (one on each floor), two kitchen/break rooms, two private bathrooms with shower and lockers
- One of the large private offices can easily be converted to a small conference room for 10 +/- people
- Free parking for employees

For information, please contact:

Alan Polacsek

t 303-260-4247

alan.polacsek@nmrk.com

Brian Wingate

t 303-260-4492

brian.wingate@nmrk.com

1800 Larimer Street, Suite 1700,
Denver, CO 80202

nmrk.com

NEWMARK

The information contained herein has been obtained from sources deemed reliable but has not been verified and no guarantee, warranty or representation, either express or implied, is made with respect to such information. Terms of sale or lease and availability are subject to change or withdrawal without notice.

PROSPECTOR PLACE - 708 13TH STREET | GOLDEN, COLORADO

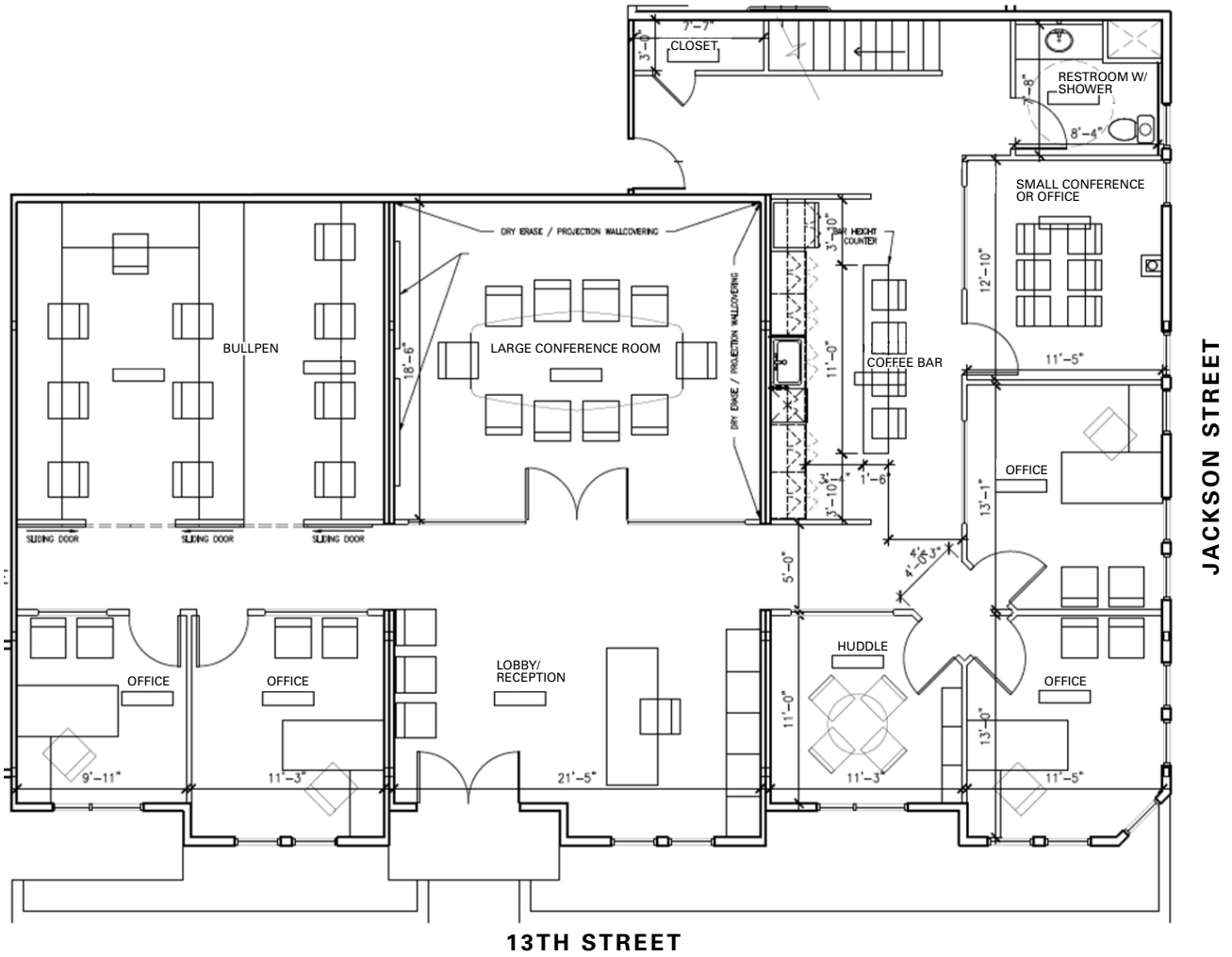
Details

Space Available: 2,179- 5,593 SF

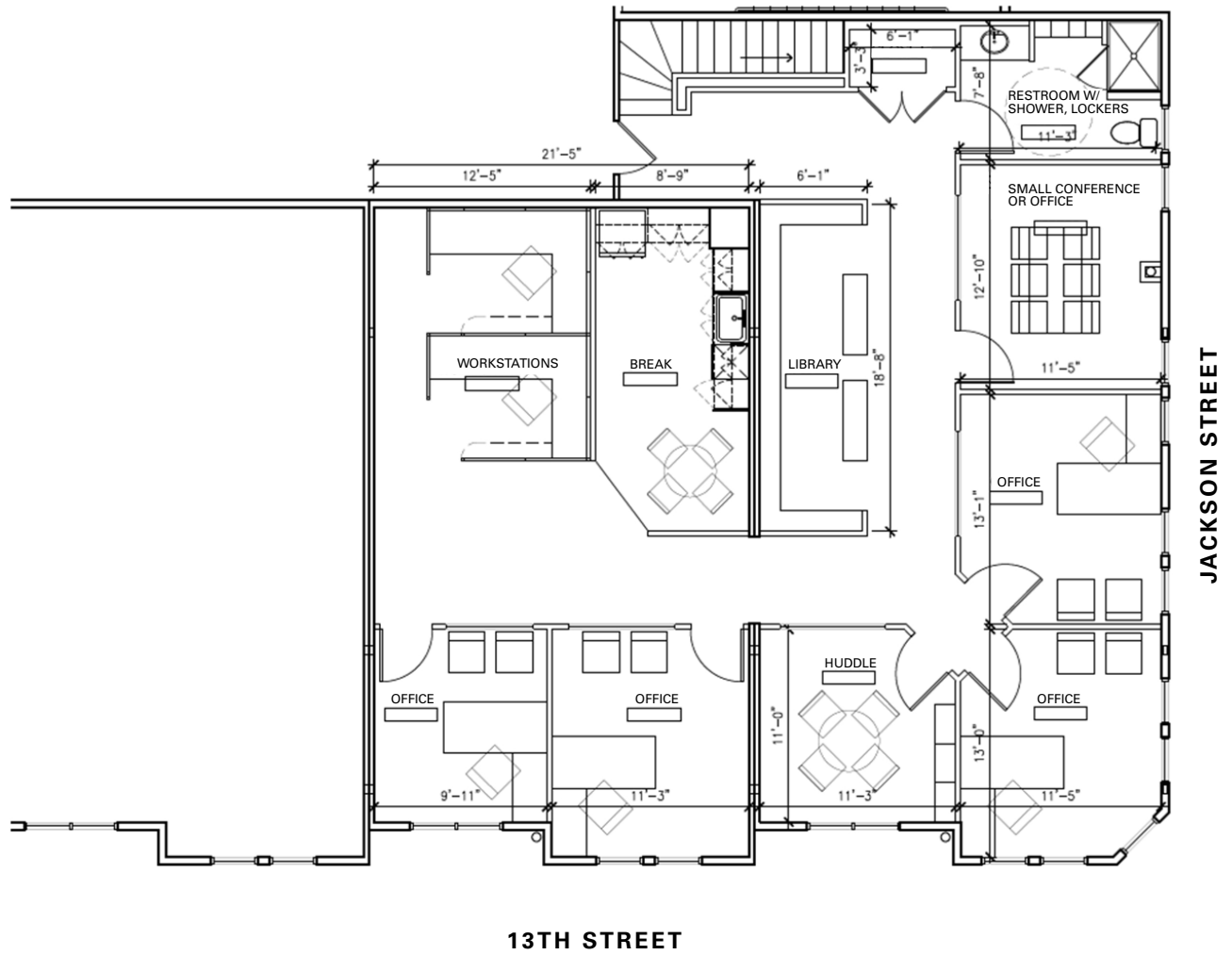
Parking: Free parking for employees, covered unreserved and covered reserved available

TI Allowance: Negotiable

Space Plan | First Floor | 3,414 SF Available



Space Plan | Second Floor | 2,179 SF Available



PROSPECTOR PLACE - 708 13TH STREET | GOLDEN, COLORADO

Area Map



CONTACT

Alan Polacsek

t 303-260-44247

alan.polacsek@nmrk.com

Brian Wingate

t 303-260-4492

brian.wingate@nmrk.com