

# FOR LEASE HOME WITH ±1 ACRE OUTDOOR STORAGE

22802 BETTY ROAD | PERRIS



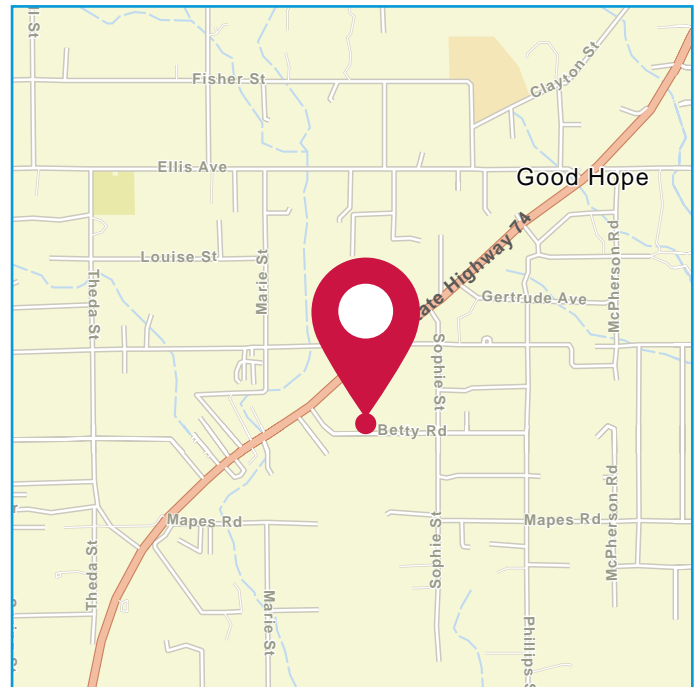
## FEATURES:

- Unincorporated Perris, Zoning LI (Verify)
- ±1,500 SF Home
- Easy I-15 & I-215 Freeway Access
- Call Broker For Showing Instructions

## MONTHLY RENT:

**\$7,500.00**

**~~\$8,334.00~~**



### Sam Robles

951.445.4519  
srobles@leetemecula.com  
DRE #01982449

### Charley Black

951.445.4507  
cblack@leetemecula.com  
DRE #01000597

No warranty or representation has been made to the accuracy of the foregoing information. Terms of sale or lease and availability are subject to change or withdrawal without notice. Lee & Associates Commercial Real Estate Services, Inc. - Riverside. 25240 Hancock Avenue, Suite 100 - Murrieta, CA 92562  
Corporate ID# 01048055

# FOR LEASE HOME WITH ±1 ACRE OUTDOOR STORAGE

22802 BETTY ROAD | PERRIS



## Sam Robles

951.445.4519  
srobles@leetemecula.com  
DRE #01982449

## Charley Black

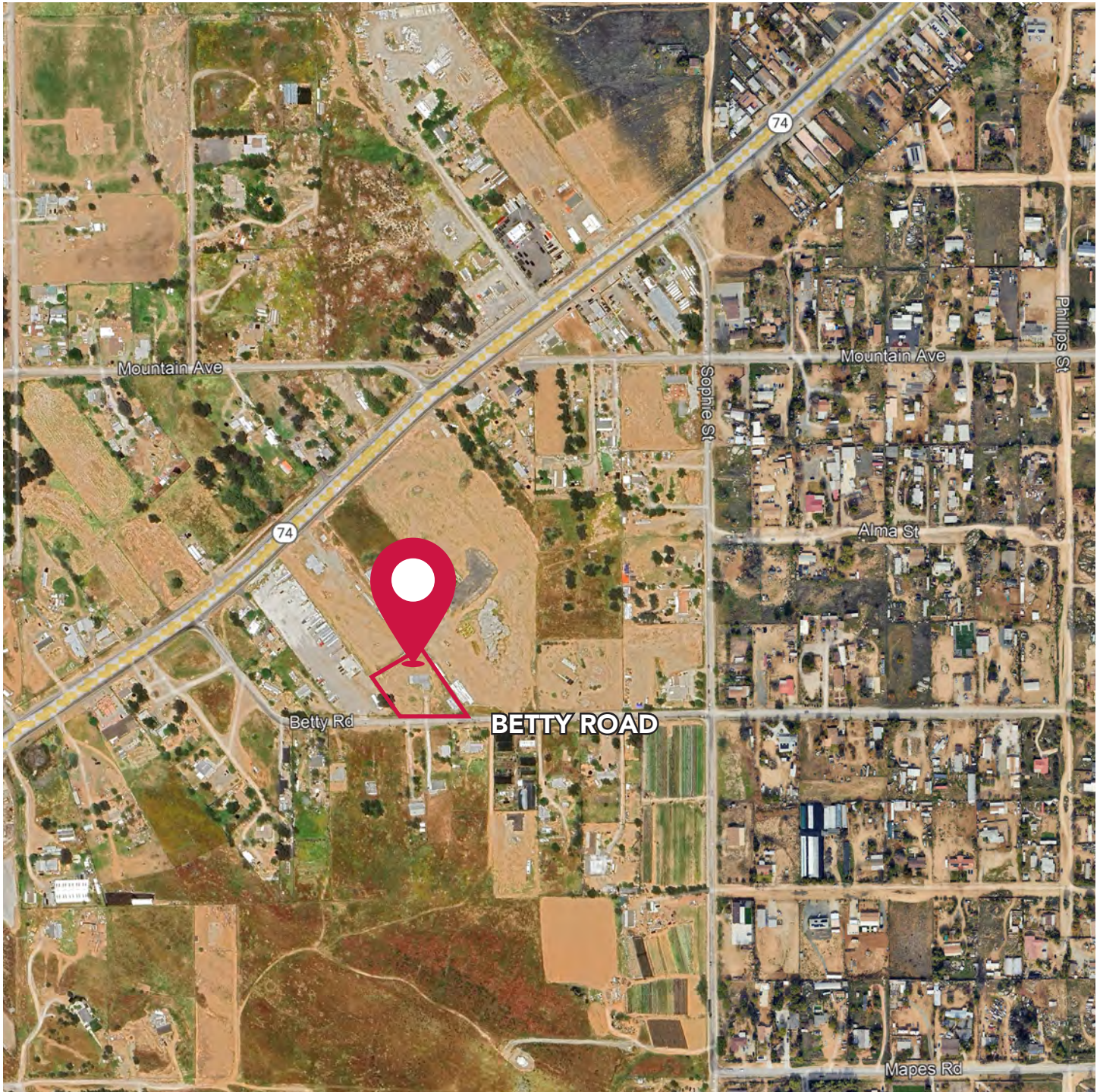
951.445.4507  
cblack@leetemecula.com  
DRE #01000597

No warranty or representation has been made to the accuracy of the foregoing information. Terms of sale or lease and availability are subject to change or withdrawal without notice. Lee & Associates Commercial Real Estate Services, Inc. - Riverside. 25240 Hancock Avenue, Suite 100 - Murrieta, CA 92562 Corporate ID# 01048055

# FOR LEASE HOME WITH ±1 ACRE OUTDOOR STORAGE

22802 BETTY ROAD | PERRIS

**LEE & ASSOCIATES**  
COMMERCIAL REAL ESTATE SERVICES



## Sam Robles

951.445.4519  
srobles@leetemecula.com  
DRE #01982449

## Charley Black

951.445.4507  
cblack@leetemecula.com  
DRE #01000597

No warranty or representation has been made to the accuracy of the foregoing information. Terms of sale or lease and availability are subject to change or withdrawal without notice. Lee & Associates Commercial Real Estate Services, Inc. - Riverside. 25240 Hancock Avenue, Suite 100 - Murrieta, CA 92562 Corporate ID# 01048055