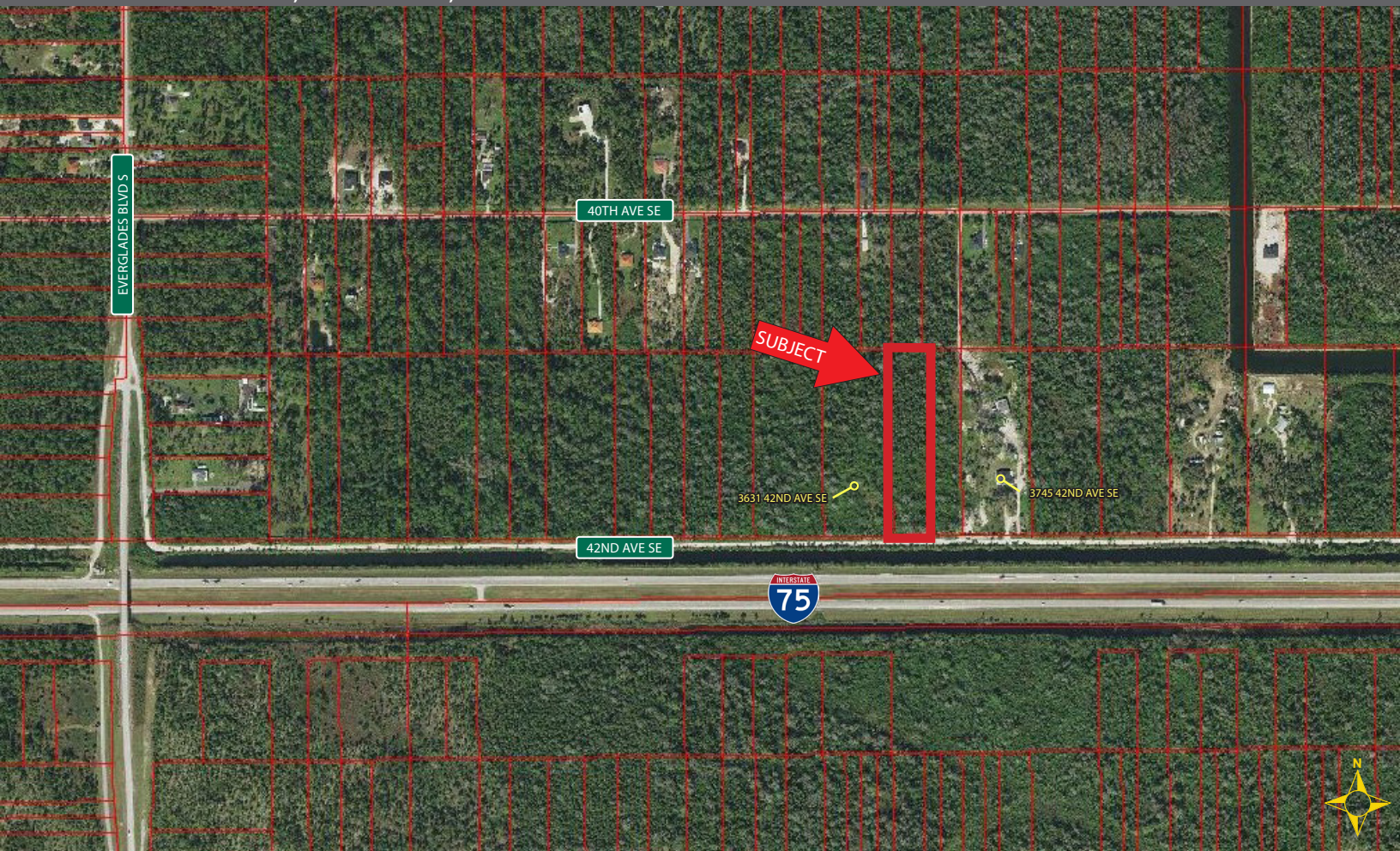


# 3.35± ACRES HOME SITE OFF EVERGLADES BLVD S

## FOR SALE

42<sup>ND</sup> AVENUE SE, NAPLES, FL 34117



**PRICE:** \$120,000 @ \$35,800/ACRE

**SIZE:** 3.35± Acres (165' x 884')

**LOCATION:** 0.7± miles east of Everglades Boulevard S, next to 3631 42<sup>nd</sup> Avenue SE

**ZONING:** E - Estates District (Collier County)

**FLOOD ZONE:** AH [Click here for description](#)

**RE TAXES:** \$551.32 (2024)

**PARCEL ID:** 4166080106

### CONTACT

FRED KERMANI, CCIM, AIA  
Partner

239.659.4960

[Fred.Kermani@CREConsultants.com](mailto:Fred.Kermani@CREConsultants.com)  
[CREConsultants.com/FredKermani](http://CREConsultants.com/FredKermani)

Great secluded home site located just 0.7± miles east of Everglades Boulevard S.

Zoned "E" Estate District, suitable for single-family home and guest house not

exceeding 40% of the primary residence. This is a great property whether you are

looking to build or hold for a few years as an investment.

12140 Carissa Commerce Ct, Suite 102  
Fort Myers, FL 33966

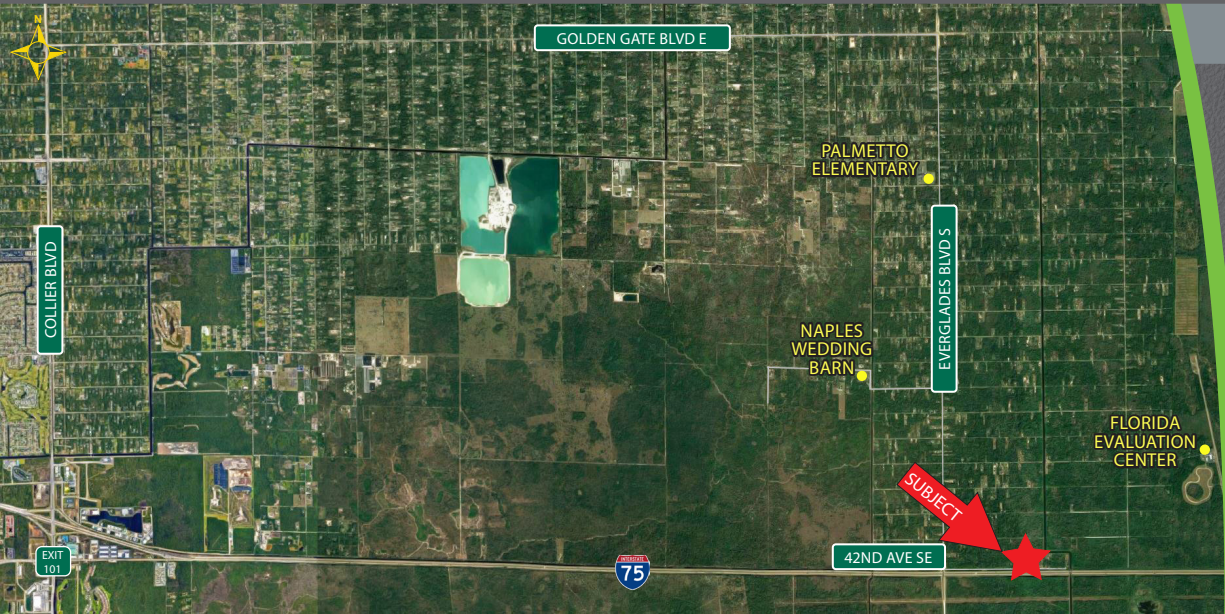
1100 Fifth Ave. S, Suite 404  
Naples, FL 34102



# 3.35± ACRES HOME SITE OFF EVERGLADES BLVD S

## FOR SALE

42<sup>ND</sup> AVENUE SE, NAPLES, FL 34117



### HIGHLIGHTS

- Zoned E - Estate District
- Located 6± miles south of Golden Gate Boulevard E
- Located 15± miles from Collier Boulevard



### CONTACT

FRED KERMANI, CCIM, AIA  
Partner  
239.659.4960

Fred.Kermani@CREConsultants.com  
CREConsultants.com/FredKermani

2025 DEMOGRAPHICS	3 MILES	5 MILES	10 MILES
EST. POPULATION	2,208	6,152	45,186
EST. HOUSEHOLDS	647	1,910	15,254
EST. MEDIAN HOUSEHOLD INCOME	\$83,436	\$84,405	\$81,540

The information contained herein was obtained from sources believed reliable. CRE Consultants makes no guarantees, warranties or representations as to the completeness or accuracy thereof, and is subject to errors, omissions, change of price or conditions prior to sale or lease, or withdrawal without notice.



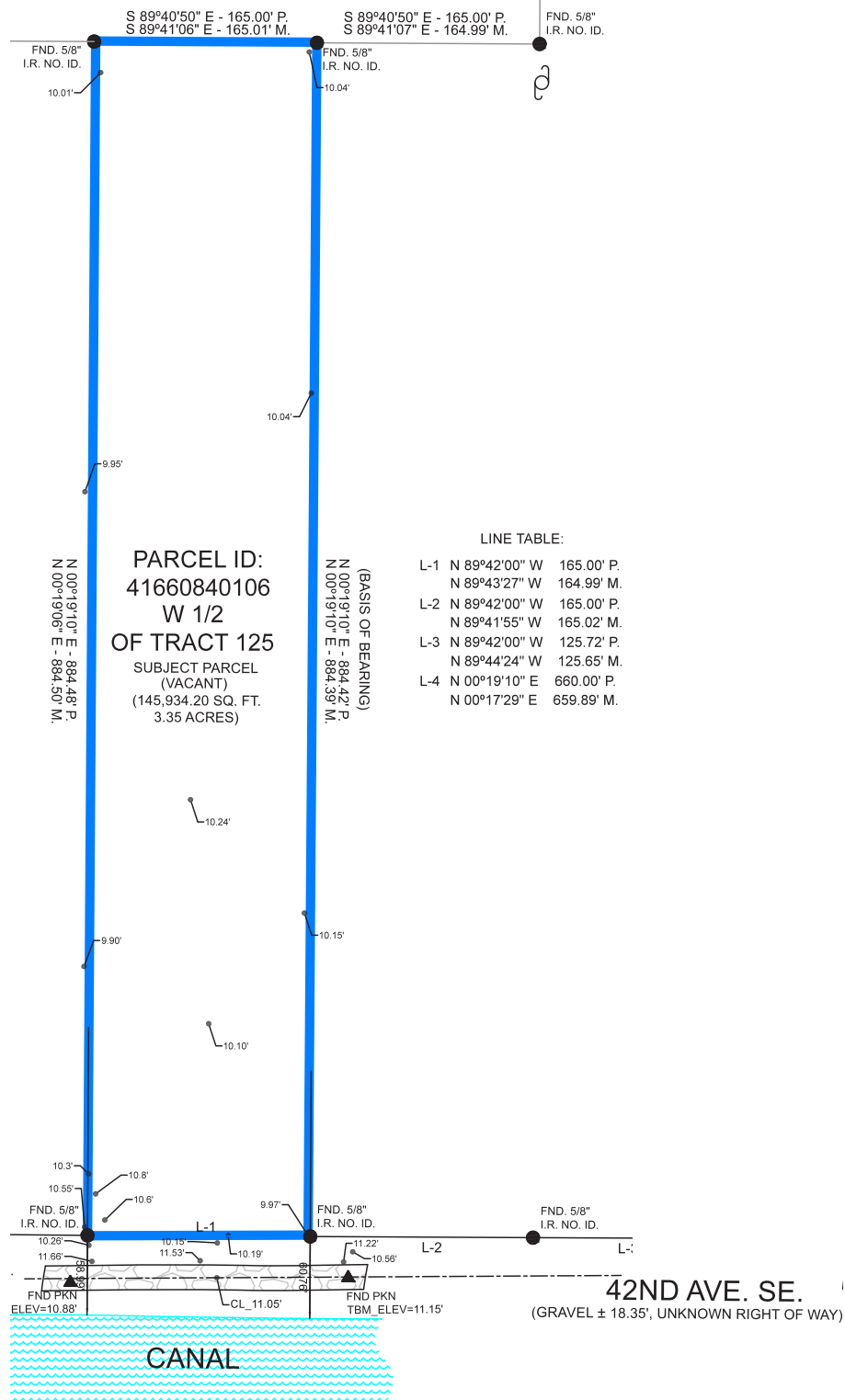
# 3.35± ACRES

## HOME SITE OFF EVERGLADES BLVD S

### FOR SALE

42<sup>ND</sup> AVENUE SE, NAPLES, FL 34117

#### SURVEY



#### CONTACT

FRED KERMANI, CCIM, AIA  
Partner  
239.659.4960  
Fred.Kermani@CREConsultants.com