



## 190-200 Pleasant St

190-200 Pleasant St, Rockland, MA 02370



**Shaun Mahoney**

JBM Enterprises, LLC

PMB #286 0 Snow Rd, Suite 3, Marshfield, MA 02050

[JBM\\_Enterprises@comcast.net](mailto:JBM_Enterprises@comcast.net)

(617) 799-4711



## 190-200 Pleasant St

\$14.00 /SF/YR

10,088 square foot industrial warehouse condo with 22' clear height and 4 loading docks; doors are 8' W x 10' H. The space is equipped with 3 bathrooms and a small kitchen, along with 1,488 square feet of finished office space. The offices are freshly painted. Equipped with 3-phase 480V power, and energy efficient lighting in the warehouse and offices. The building has a comprehensive alarm system, with 12 cameras: 4 outside and 8 inside.

It is possible to add a ramp to one of the tailboard docks and/or a drive-in door at the end of the building. Additionally, office space, with windows, can be added above the offices.

Close proximity to Routes 3, 18, 53, & commuter rail stations in Weymouth (3), Abington & Hingham....

- See attached electrical service information.



Rental Rate: \$14.00 /SF/YR

Property Type: Industrial

Property Subtype: Manufacturing

Rentable Building Area: 30,000 SF

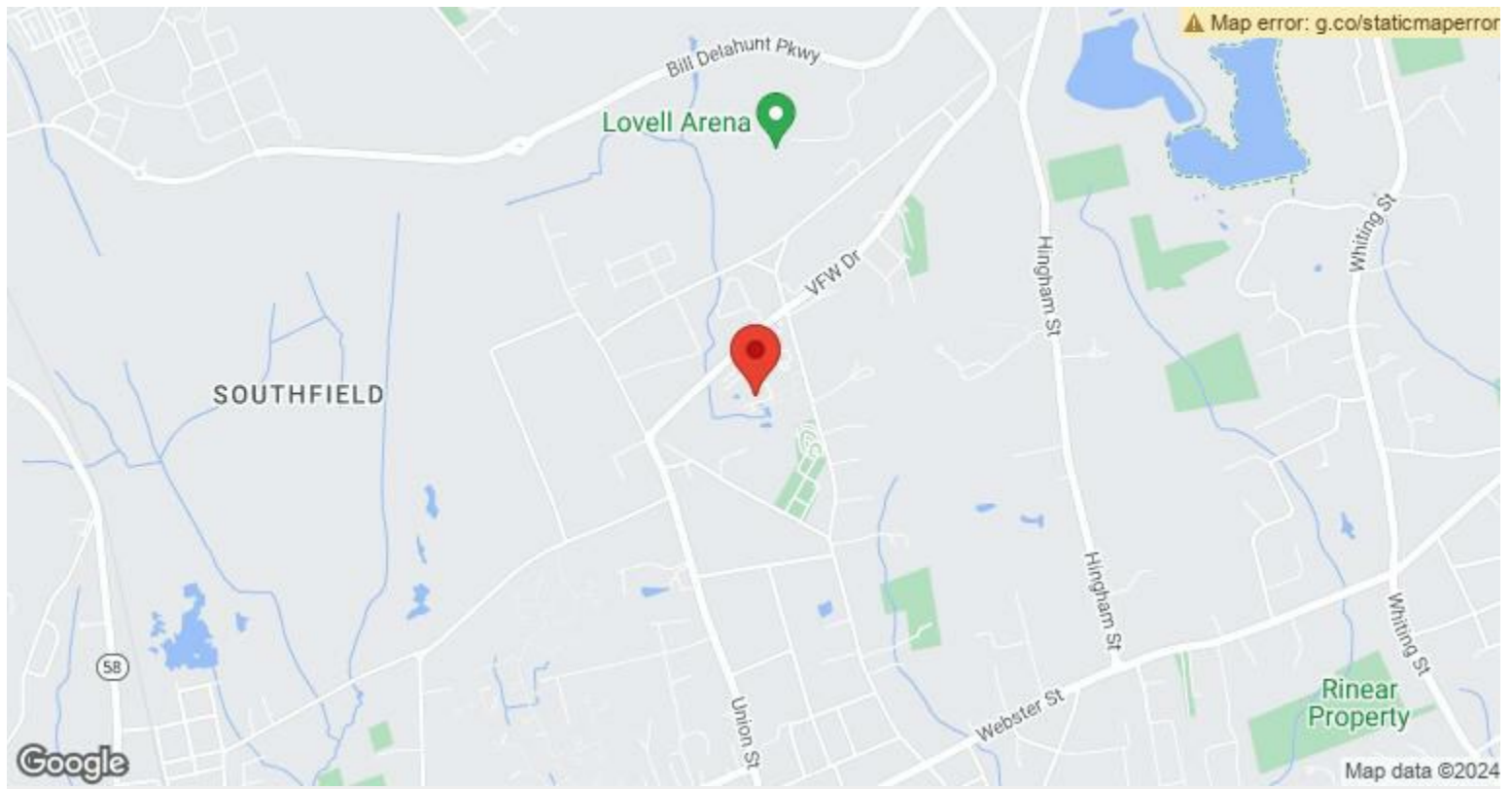
Year Built: 2006

Rental Rate Mo: \$1.17 /SF/MO

## 1st Floor

Space Available	10,088 SF
Rental Rate	\$14.00 /SF/YR
Date Available	Now
Service Type	Triple Net (NNN)
Office Size	1,488 SF
Space Type	New
Space Use	Industrial
Lease Term	Negotiable

10,088 square foot industrial warehouse condo with 22' clear height and 4 loading docks. The space is equipped with 3 bathrooms and a small kitchen, along with 1,500 square feet of finished office space. The offices are freshly painted. Equipped with 3-phase 480V power, and energy efficient lighting in the warehouse and offices. The building has a comprehensive alarm system, with 12 cameras: 4 outside and 8 inside. It is possible to add a ramp to one of the tailboard docks and/or a drive-in door at the end of the building. Additionally, office space, with windows, can be added above the offices. Close proximity to Routes 3, 18, 53, & commuter rail stations in Weymouth (3), Abington & Hingham.



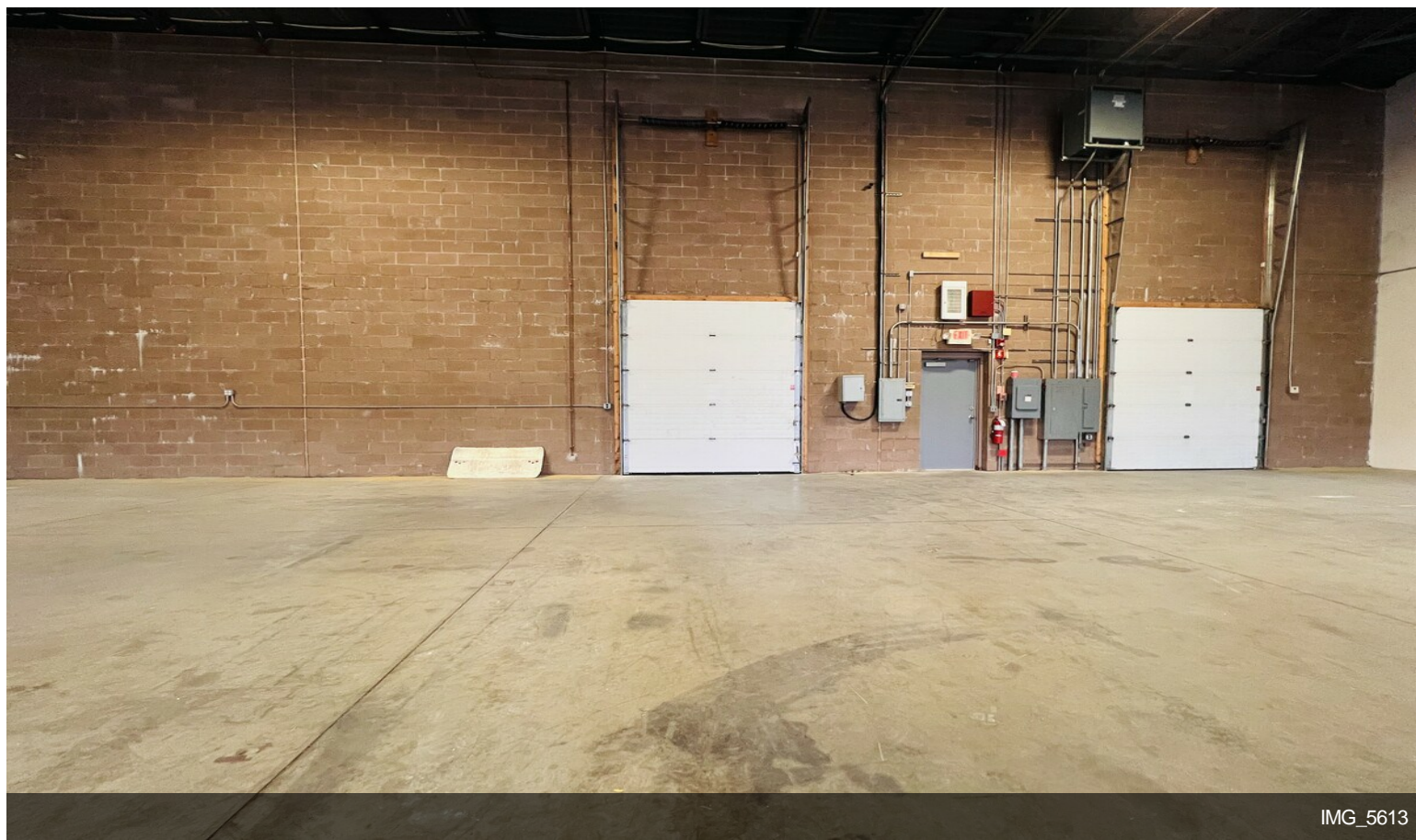
## 190-200 Pleasant St, Rockland, MA 02370

10,088 square foot industrial warehouse condo with 22' clear height and 4 loading docks; doors are 8' W x 10' H. The space is equipped with 3 bathrooms and a small kitchen, along with 1,488 square feet of finished office space. The offices are freshly painted. Equipped with 3-phase 480V power, and energy efficient lighting in the warehouse and offices. The building has a comprehensive alarm system, with 12 cameras: 4 outside and 8 inside.

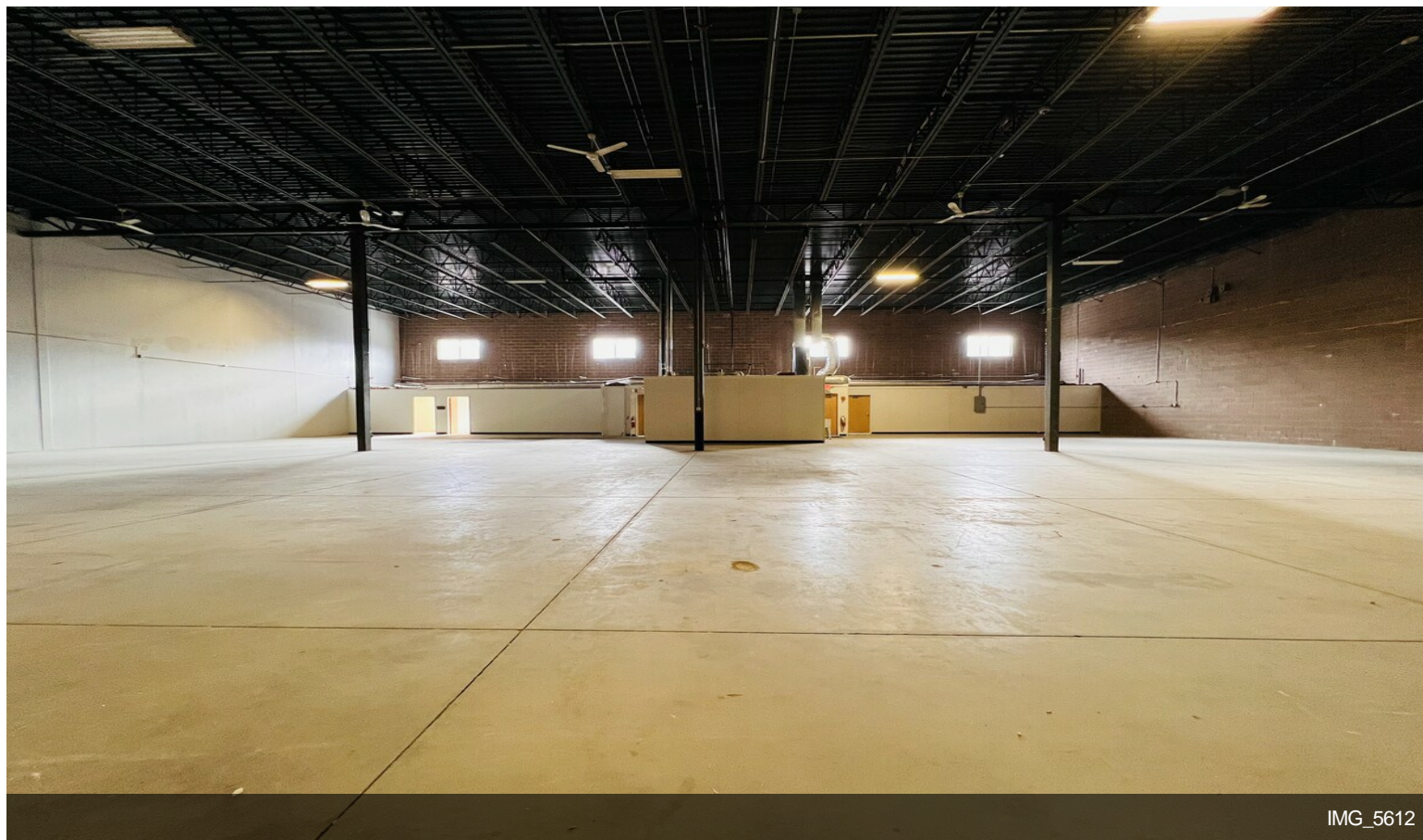
It is possible to add a ramp to one of the tailboard docks and/or a drive-in door at the end of the building. Additionally, office space, with windows, can be added above the offices.

Close proximity to Routes 3, 18, 53, & commuter rail stations in Weymouth (3), Abington & Hingham.

# Property Photos

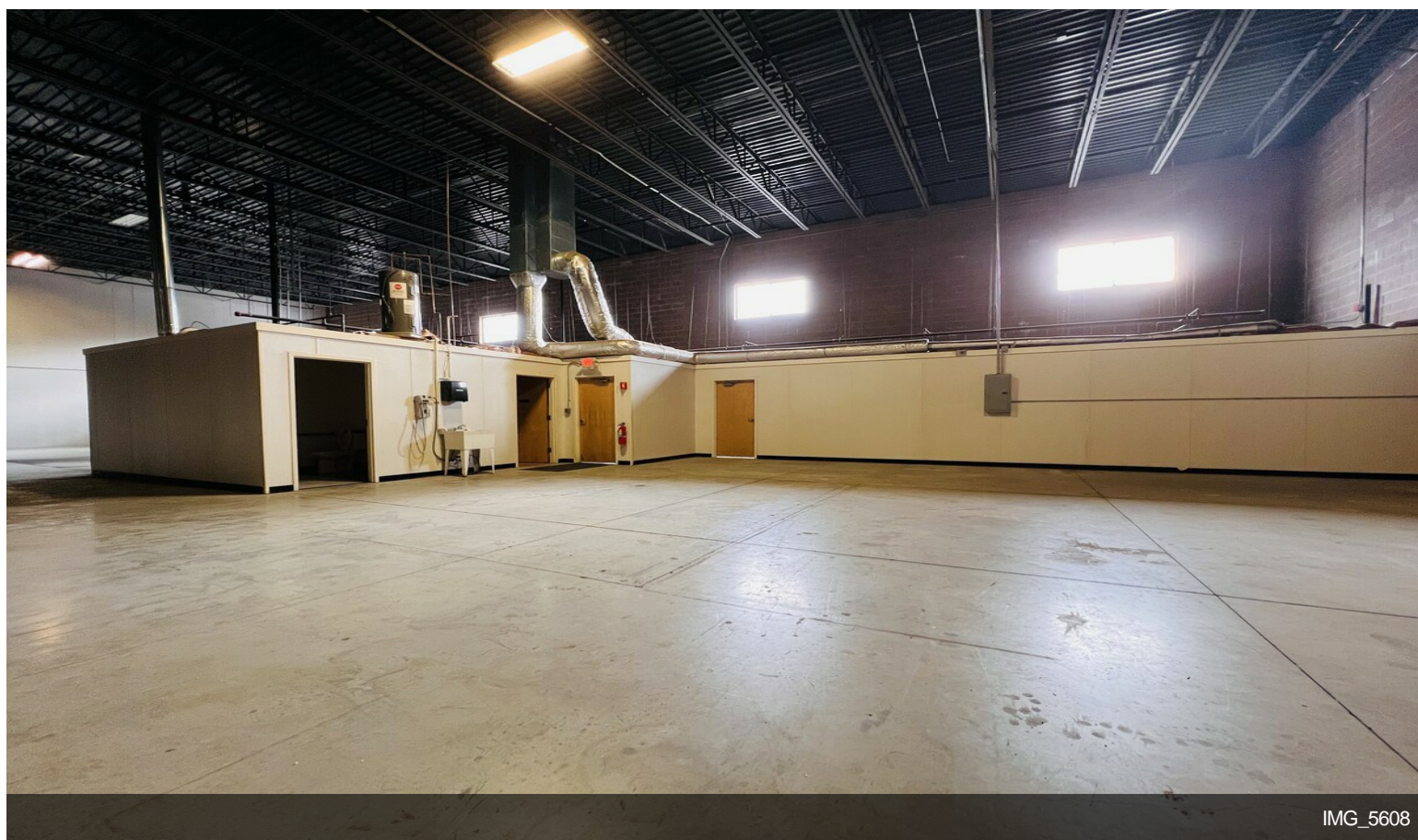
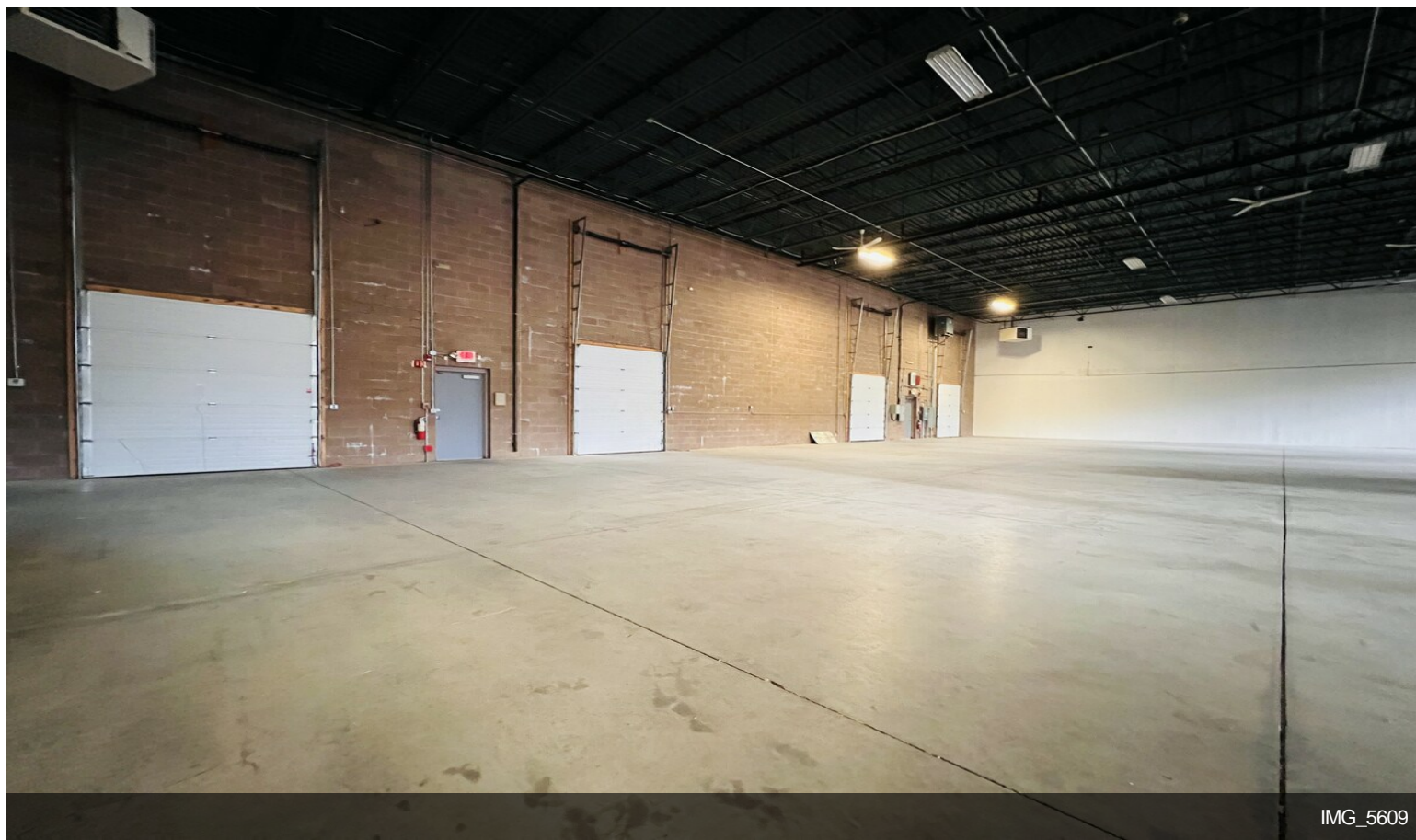


IMG\_5613

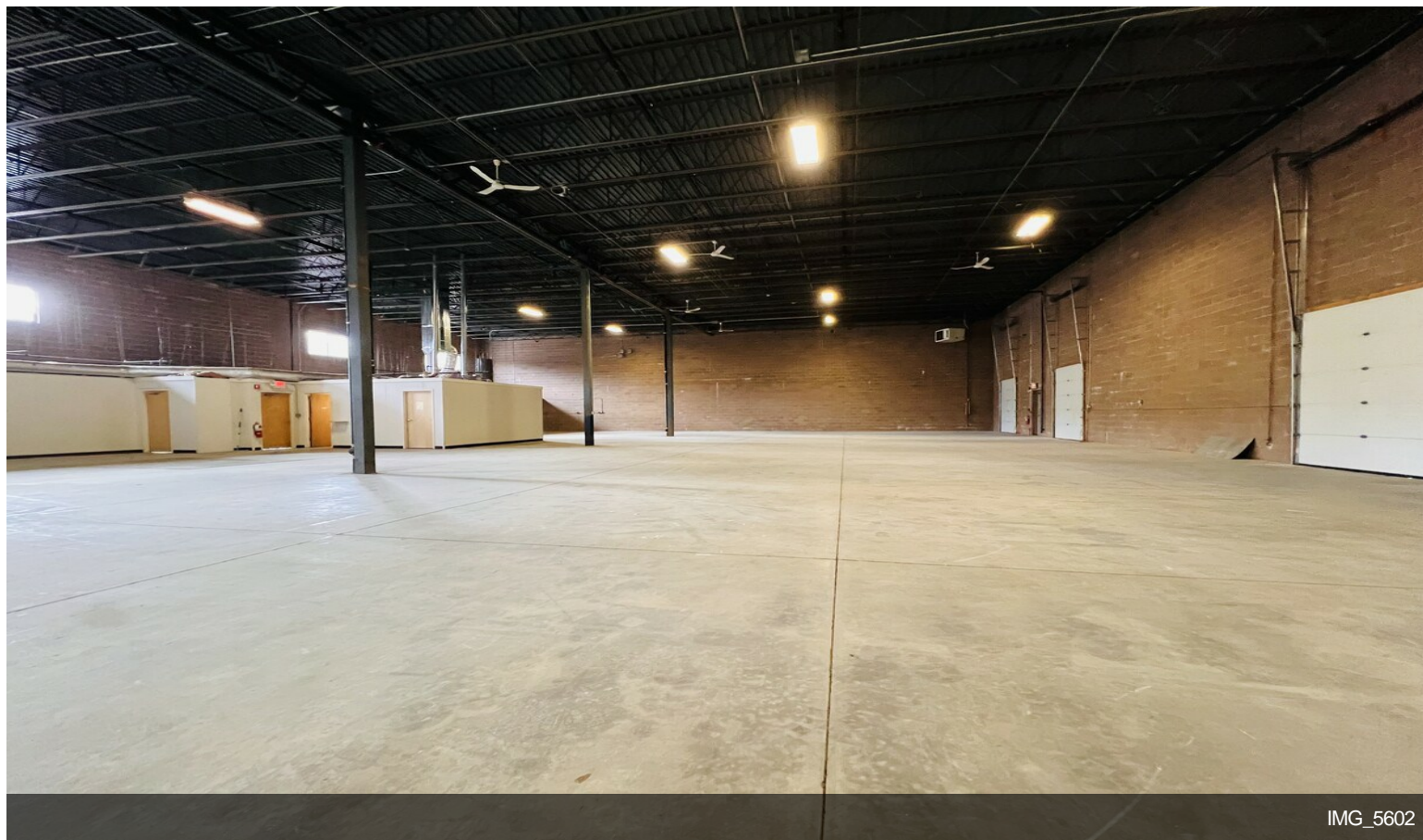
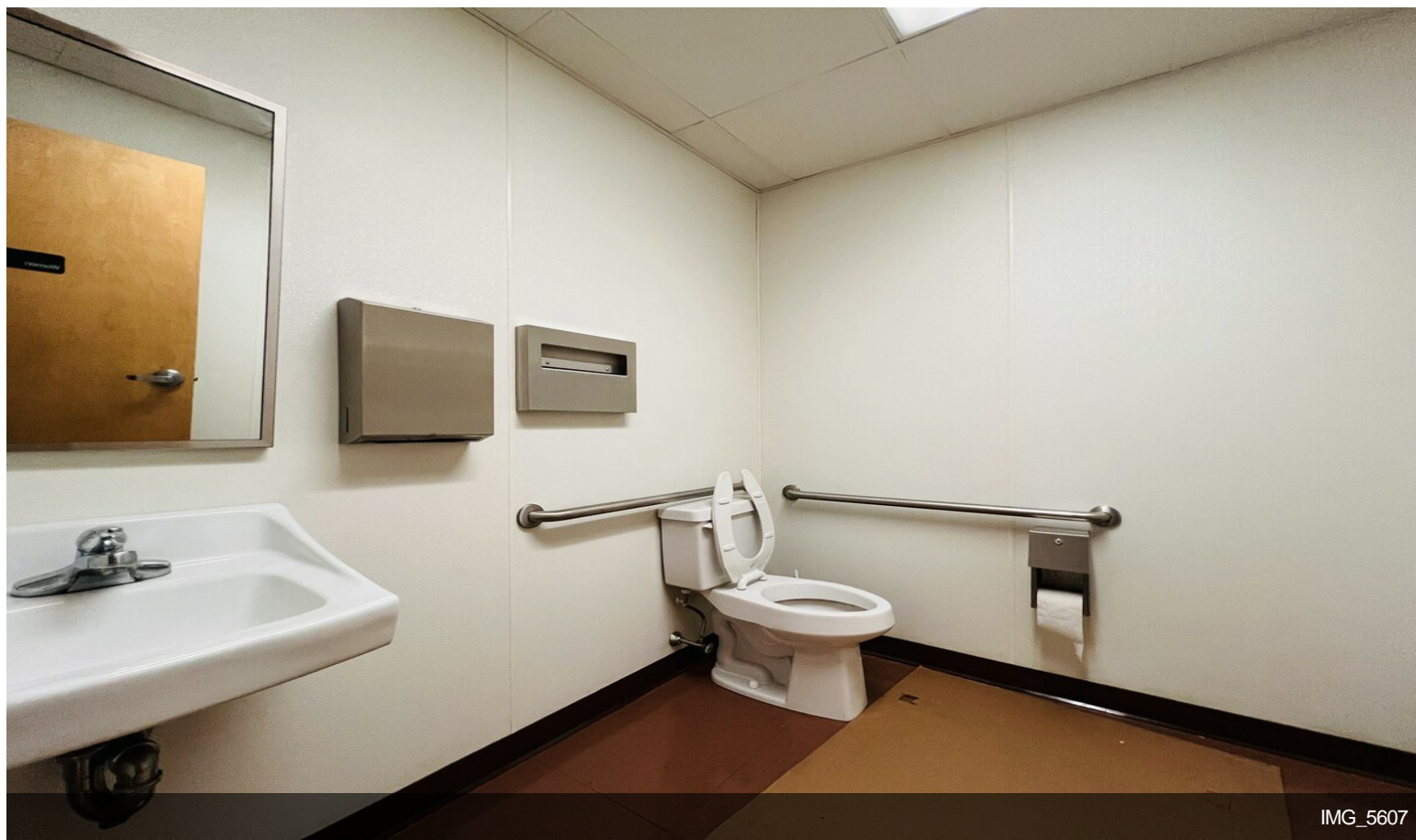


IMG\_5612

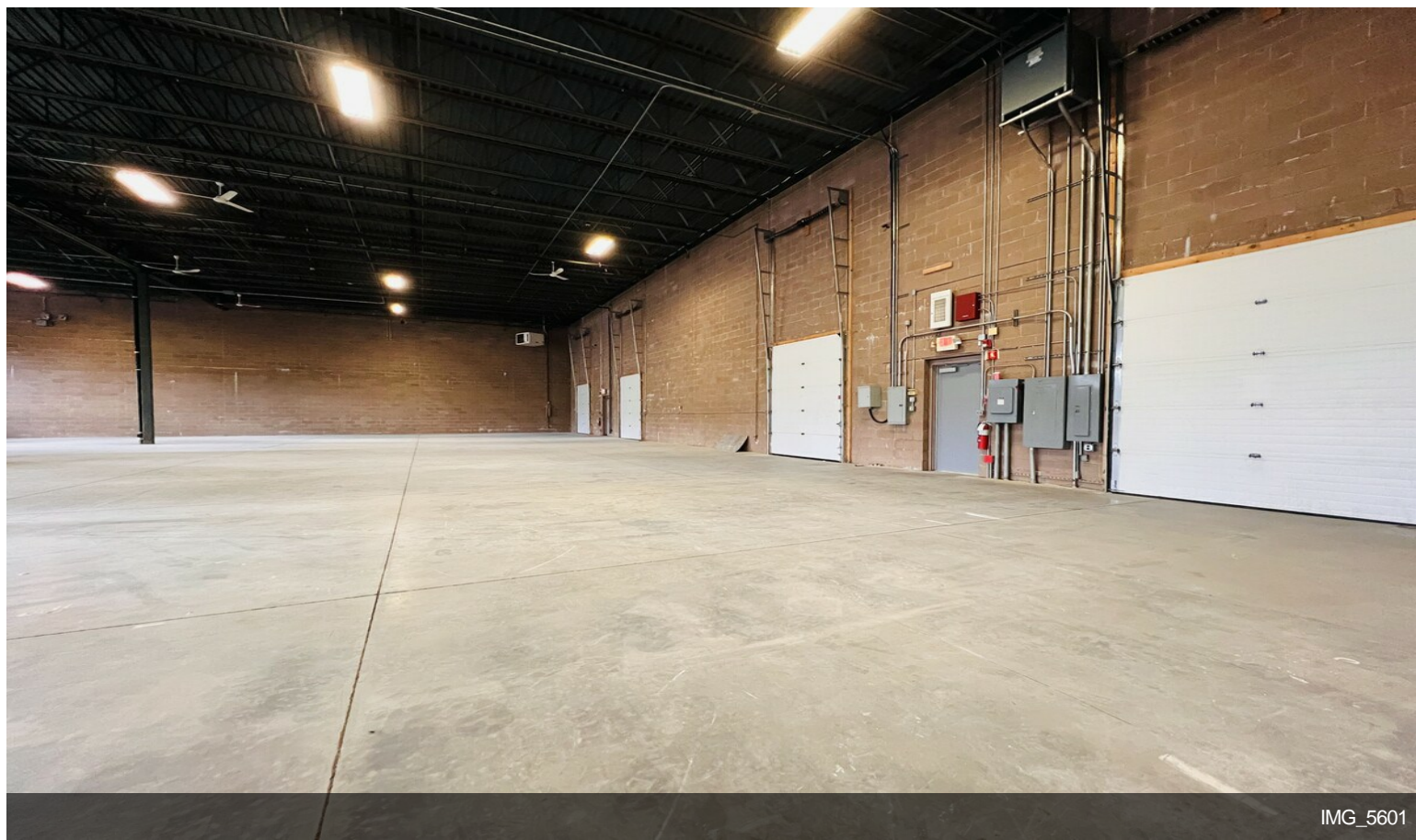
# Property Photos



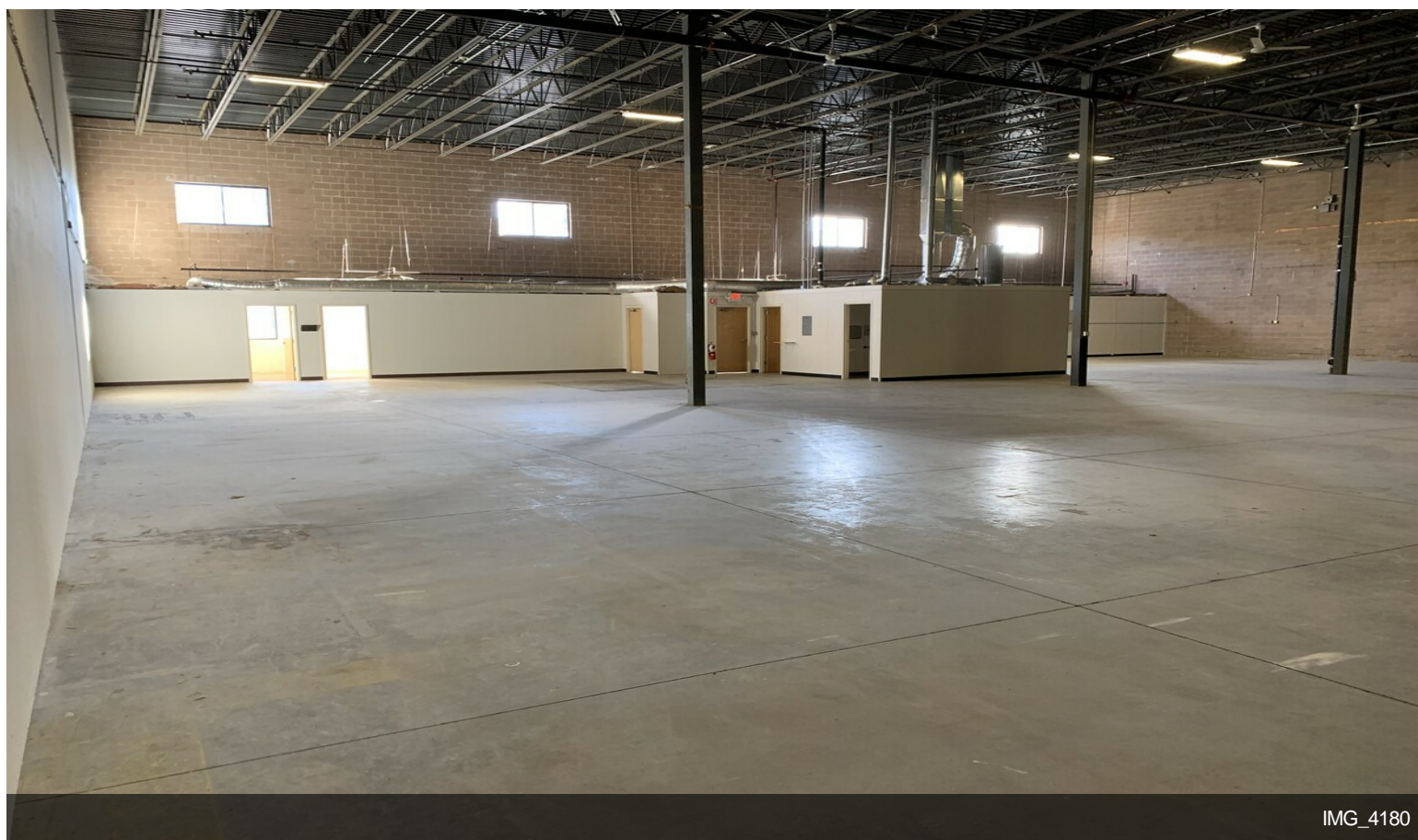
# Property Photos



# Property Photos



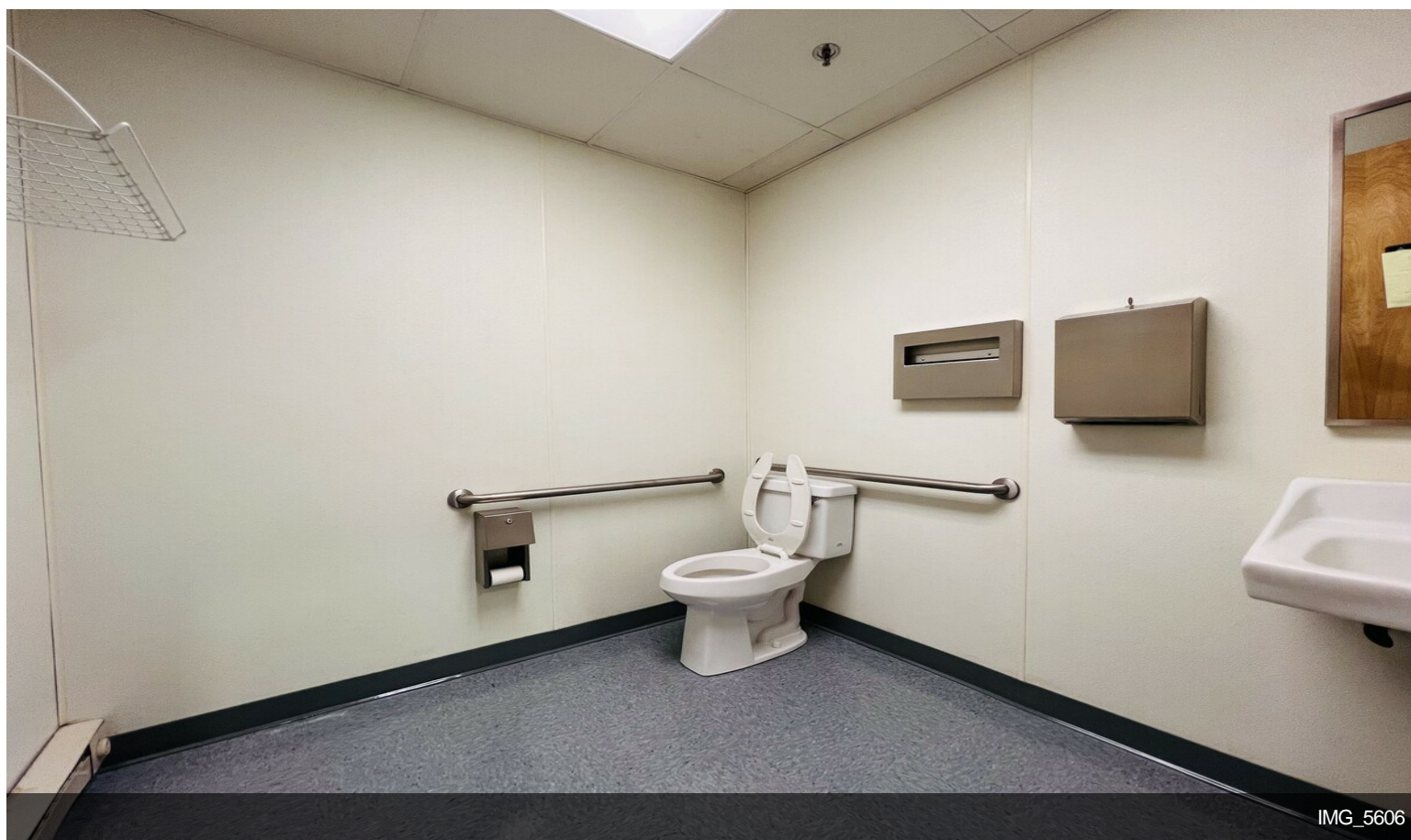
IMG\_5601



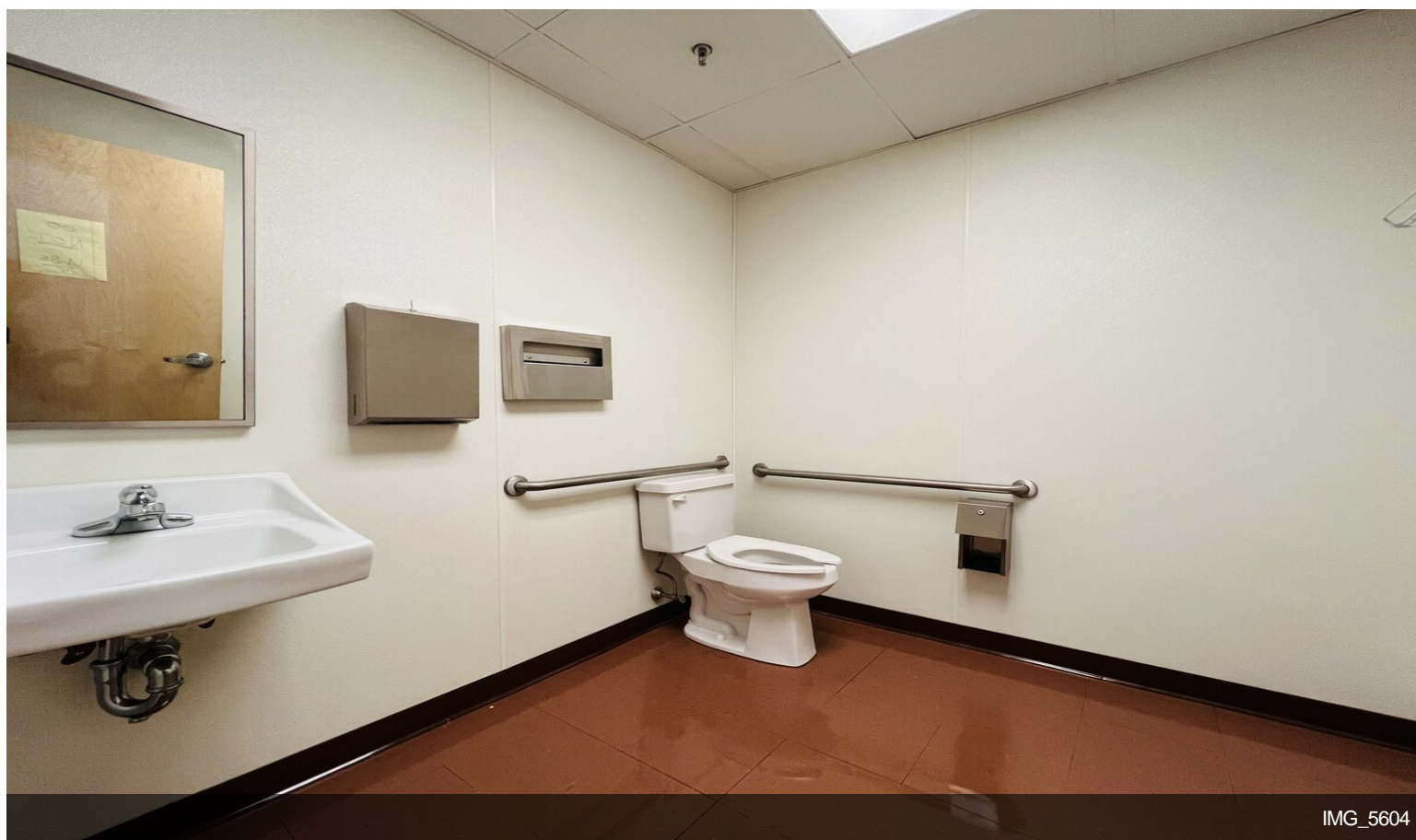
IMG\_4180



# Property Photos

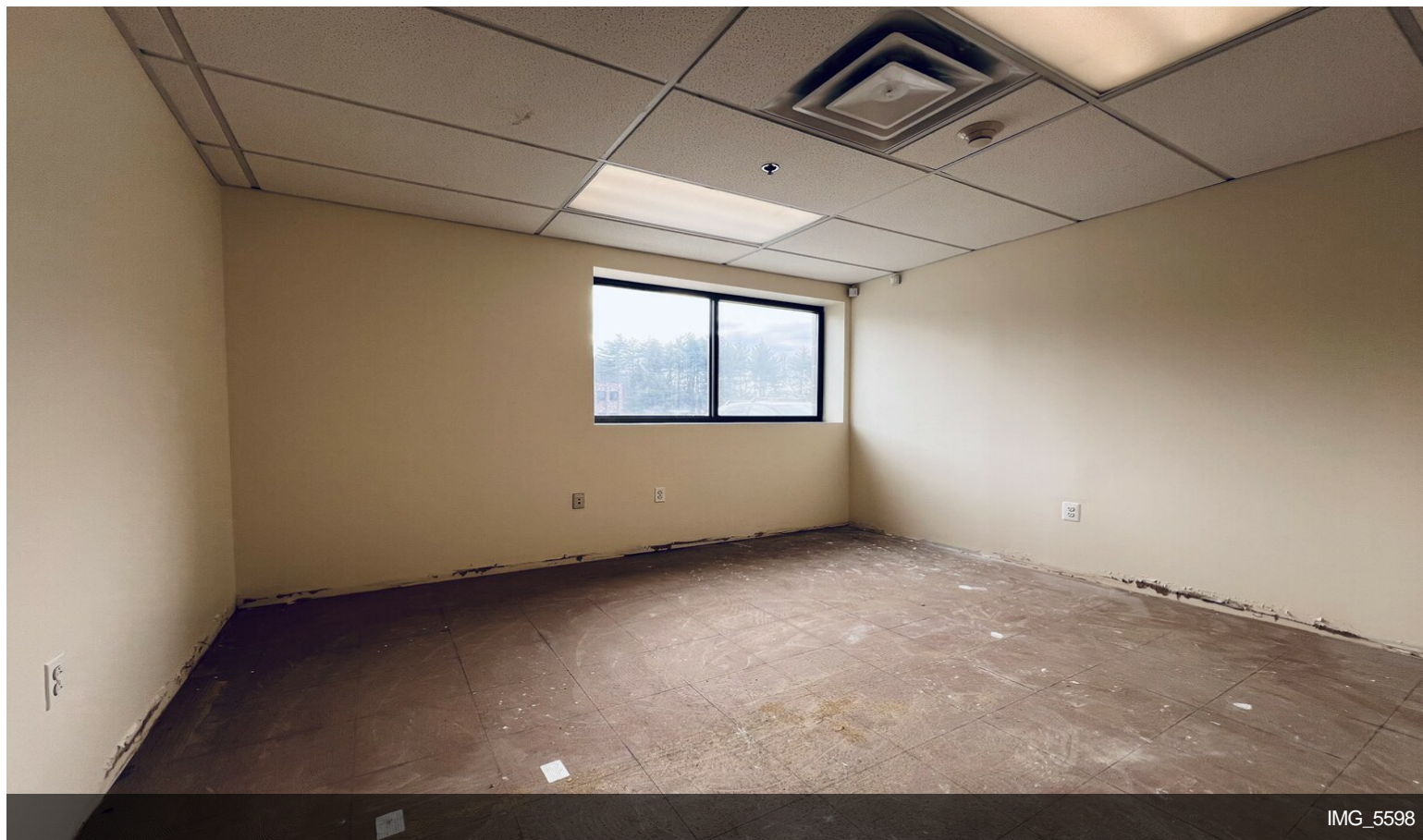


IMG\_5606



IMG\_5604

# Property Photos



# Property Photos



IMG\_5597



IMG\_5595

# Property Photos

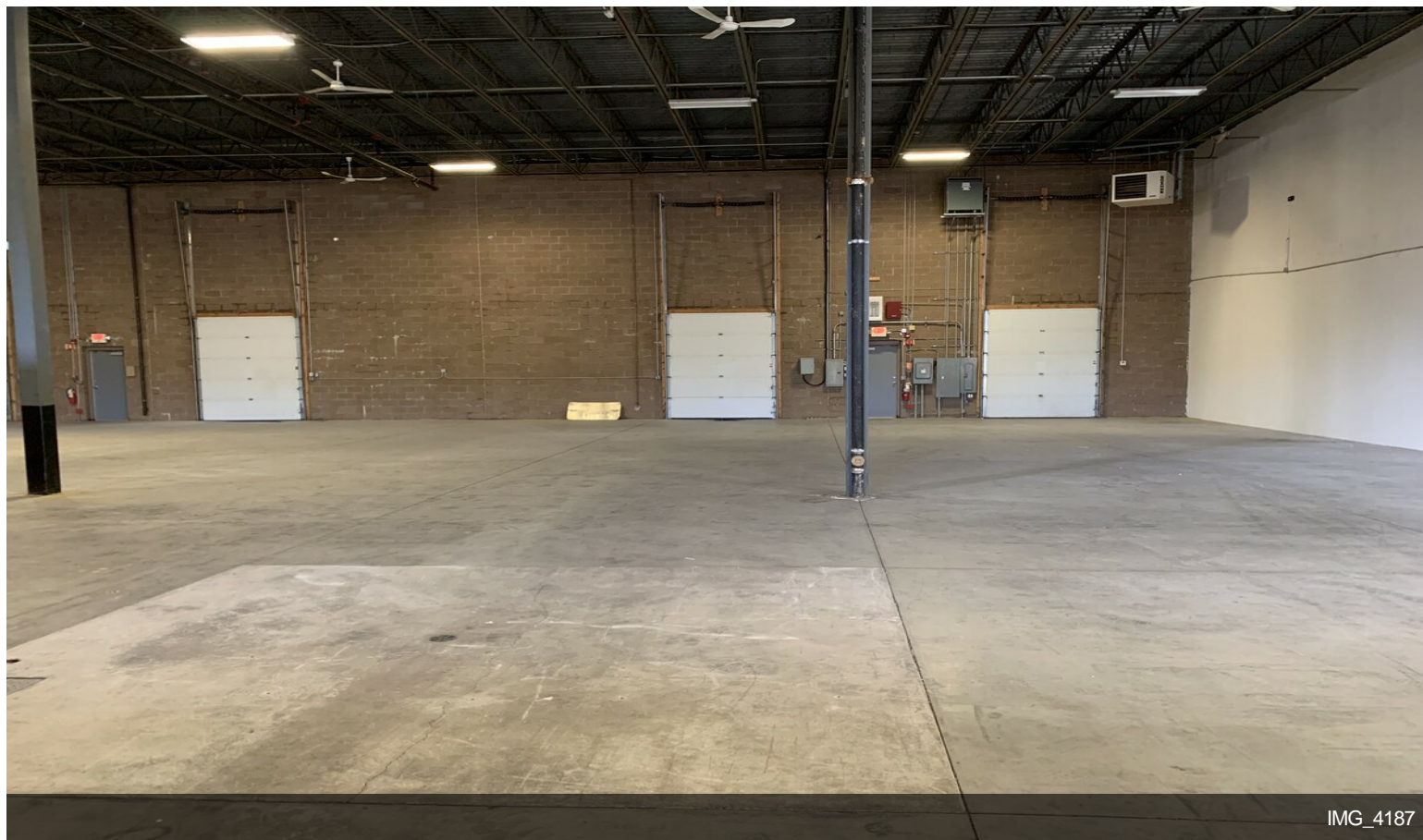


IMG\_5593



IMG\_4190

# Property Photos



# Property Photos

