

# Forum Square

OFFICE SUITES FOR LEASE

1117 S Milwaukee Ave  
Libertyville, IL 60048

**Andrew Prunty**

Managing Broker

Apex Commercial Realty LLC

(847) 650-8299

[andrew@commercialrealtybyapex.com](mailto:andrew@commercialrealtybyapex.com)

Lic: 471.020524



# THE SPACE

Location 1117 S Milwaukee Ave, Libertyville, IL, 60048  
COUNTY Lake

## HIGHLIGHTS

- Park-like setting
- Recent exterior improvements
- Abundant parking
- Private entries and washrooms
- Conveniently located on Milwaukee Ave
- Available units ranging from 984sf - 14,475sf



Suite	Floor	Square Feet	Rent Per SF (Annual)	Lease Type	Notes
B-4	1	1,205	\$13	NN	
B-5	1	984	\$14	NN	
B-8	1	1,203	\$13	NN	
C	1	14,075	\$10	NN	The interior of the building is in shell condition. A new roof was installed in 2022.
D7	1	1,930	\$13	NN	
D9+D10	1	2,755	\$13	NN	
D11+D12	1	2,002	\$13	NN	

---

## PROPERTY FEATURES

---

BUILDING SF	50,942
LAND ACRES	5.64
YEAR BUILT	1981
ZONING TYPE	C-4
NUMBER OF STORIES	1
NUMBER OF BUILDINGS	4
NUMBER OF PARKING SPACES	225

---



## Property Overview

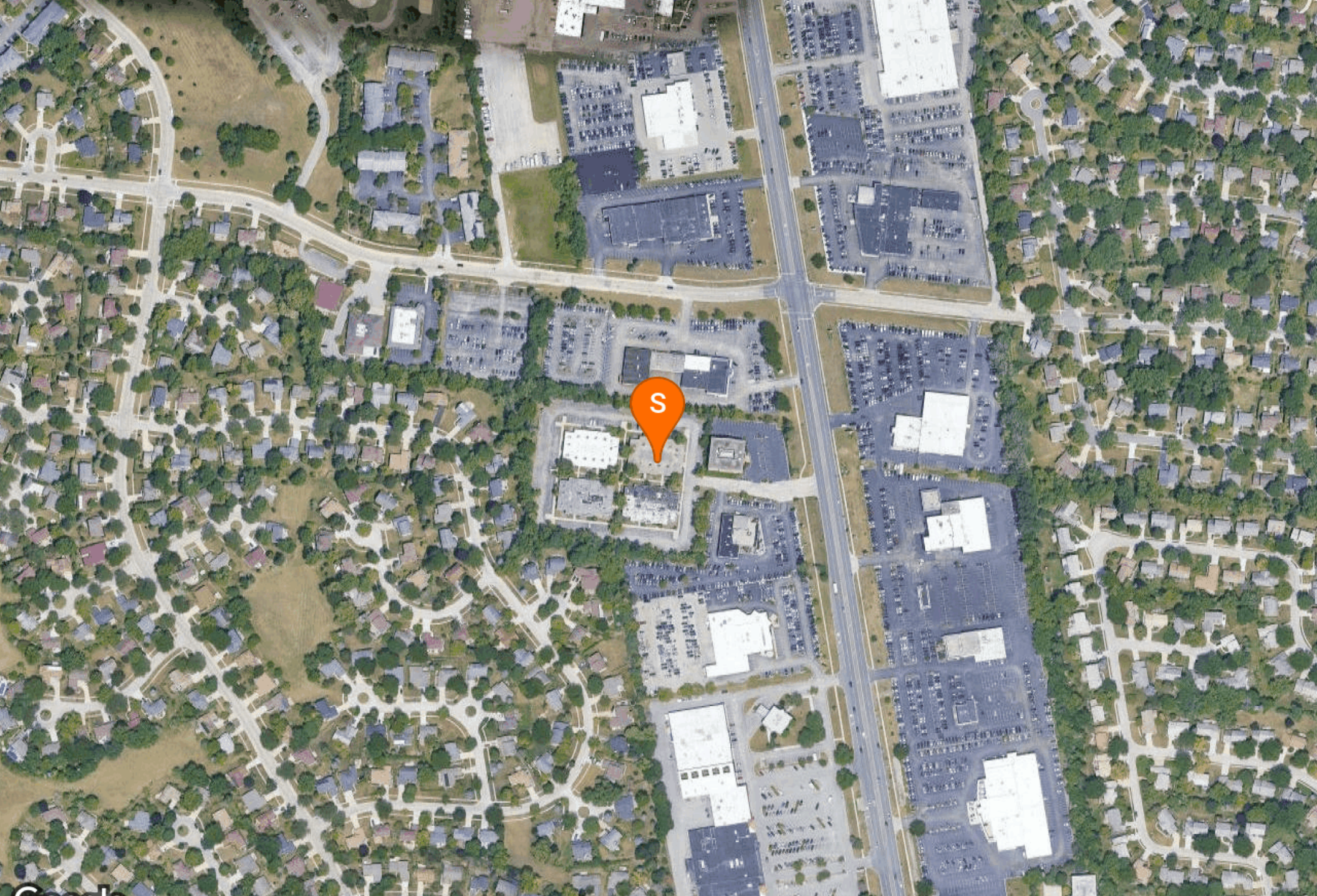
- Forum Square is a 4-building office complex located on S. Milwaukee Avenue in Libertyville, IL.
- The available spaces offer a wide range of sizes from 984 SF to 14,475 SF.
- Each unit has its own private entry and private restroom(s) and there is an atrium in the center of each building that allows additional natural light into several of the interior spaces.
- The exterior of the buildings have been repainted, new landscaping has been installed throughout the property, and new signage is planned on Milwaukee Ave.

Locator Map



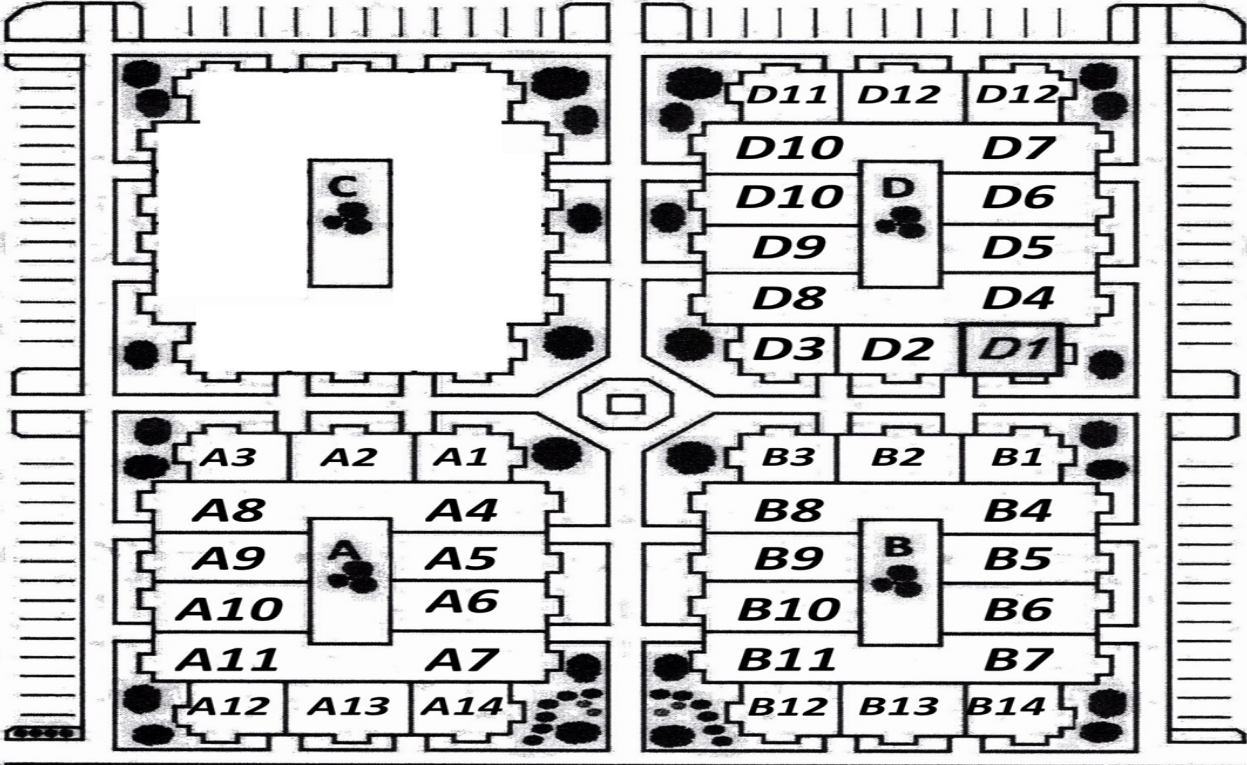
Regional Map



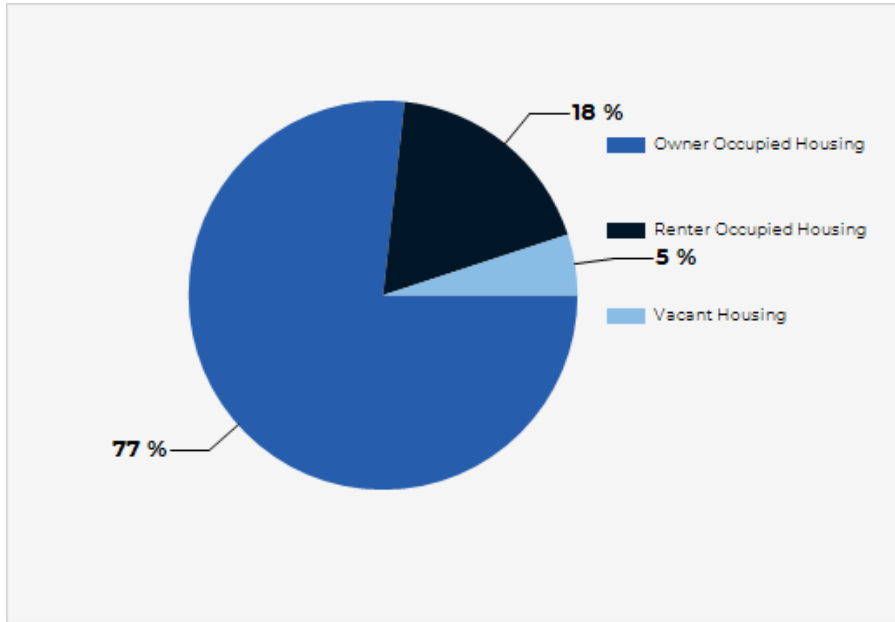


Google Imagery ©2021 Maxar Technologies, U.S. Geological Survey, USDA Farm Service Agency

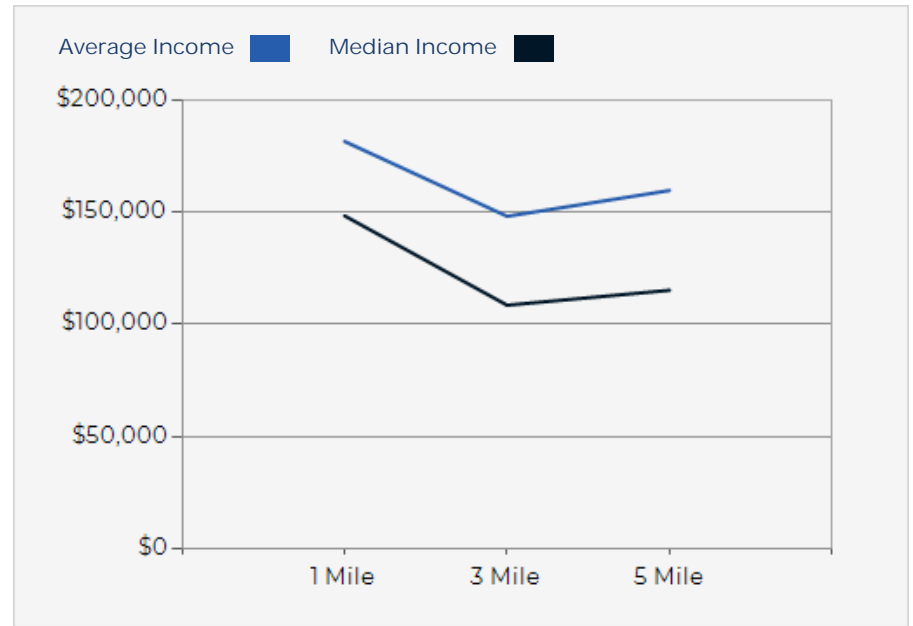
**SITE PLAN**



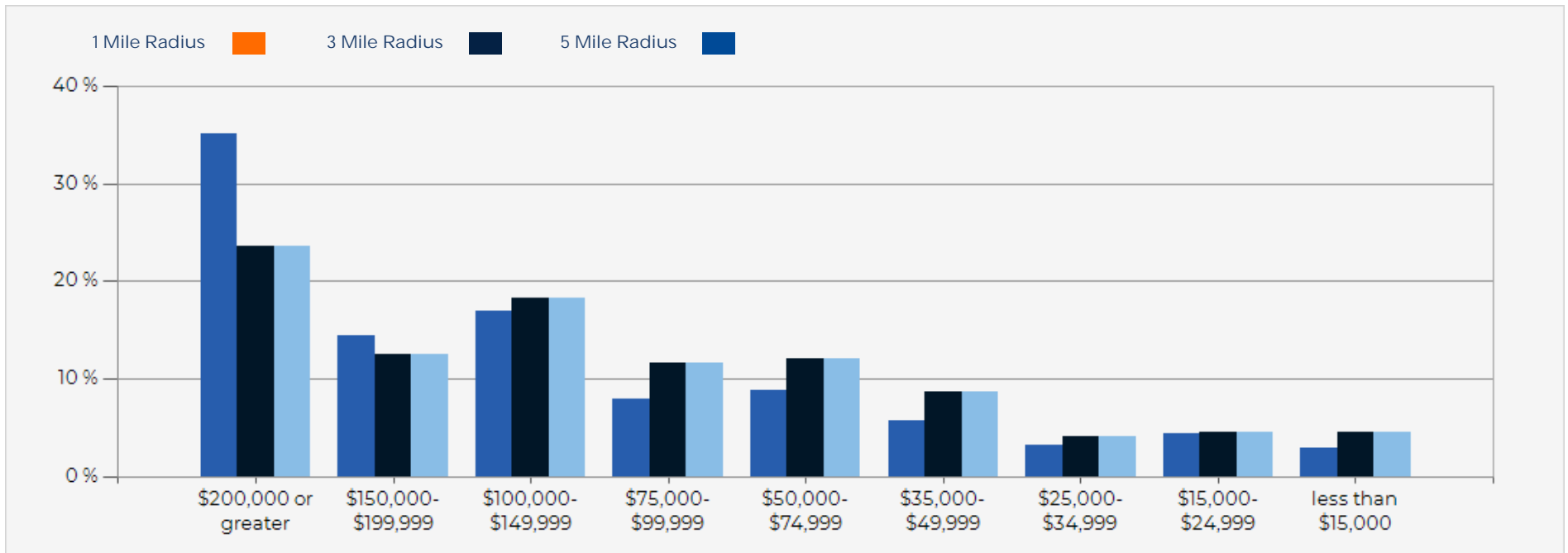
## 2021 Household Occupancy - 1 Mile Radius



## 2021 Household Income Average and Median



## 2021 Household Income



# Forum Square

## CONFIDENTIALITY and DISCLAIMER:

The information furnished herein is from sources deemed reliable and is subject to inspection and verification by all parties relying on it. No liability for its accuracy, errors, or omissions is assumed by Apex Commercial Realty LLC. Price subject to change and this listing may be withdrawn without notice.

*Exclusively Marketed by:*

**Andrew Prunty**

Managing Broker

Apex Commercial Realty LLC

(847) 650-8299

[andrew@commercialrealtybyapex.com](mailto:andrew@commercialrealtybyapex.com)

Lic: 471.020524



<https://commercialrealtybyapex.com>