

2411 WEST BEVERLY ST

STAUNTON, VA 24401

FOR
SUBLEASE



LOCATION DESCRIPTION

Located in northwest Staunton off Bypass Route 262

PROPERTY HIGHLIGHTS

- Up to 8,922 SF available for sublease in successful Food Lion anchored shopping center
- Space in great condition and available for immediate occupancy
- Excellent signage opportunity available on building and pylon
- Full access
- Traffic Count: W Beverly St: 10,000 AADT



DEMOGRAPHICS

1 MILE 3 MILES 5 MILES

Population	5,100	26,442	32,941
Households	2,394	11,825	14,497
Average Household Income	\$61,358	\$81,735	\$82,874
Median Household Income	\$43,165	\$57,996	\$59,502

TSCG

DAVID ANDREWS, CCIM

david.andrews@tscg.com

804.673.1100

CHRISTINA MAYHUGH

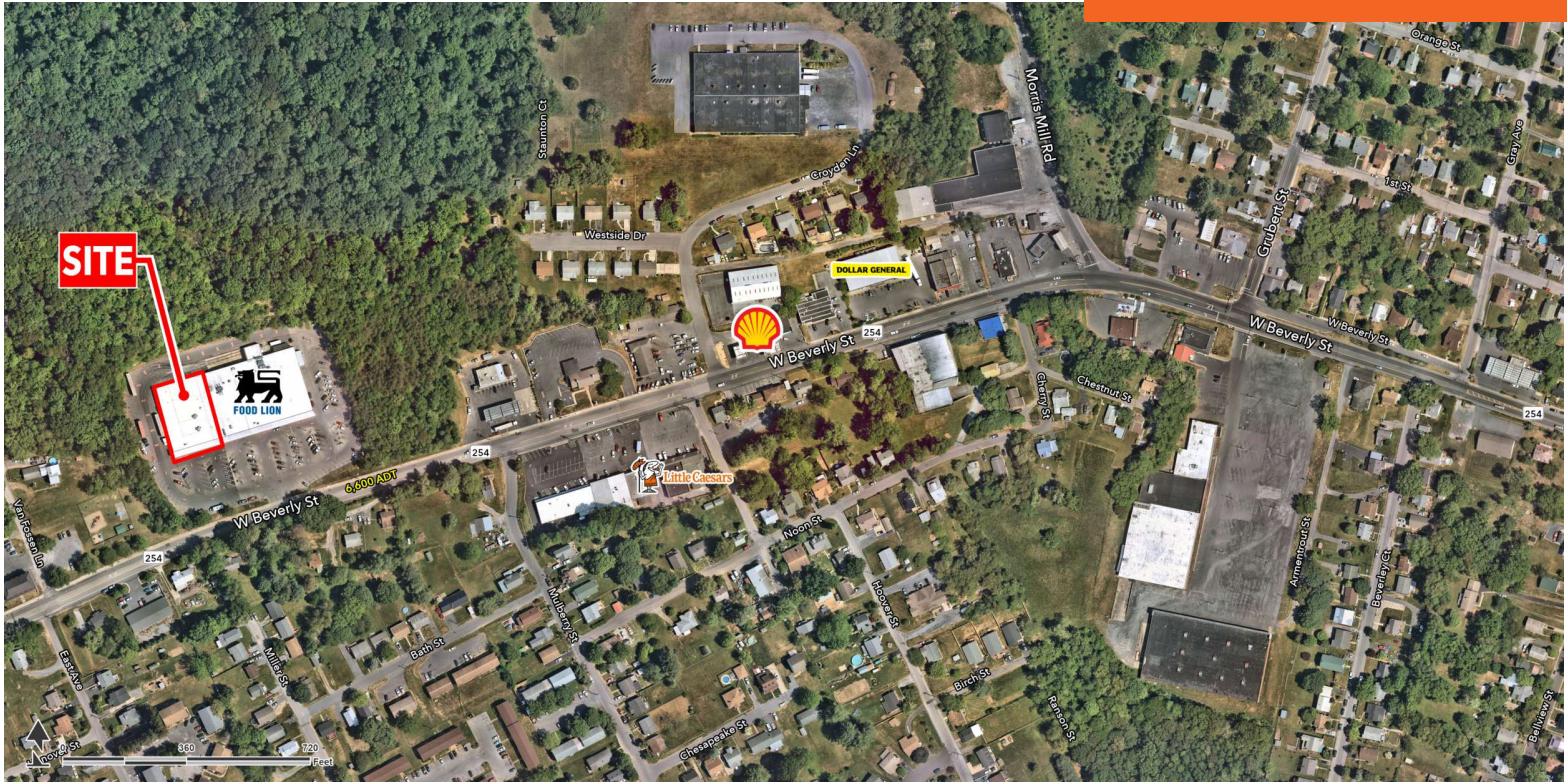
christina.mayhugh@tscg.com

804.673.1100

2411 WEST BEVERLY ST

STAUNTON, VA 24401

FOR LEASE



SUITE

Small Shop

TENANT NAME

Available

SPACE SIZE

8,922 SF

TSCG

DAVID ANDREWS, CCIM

david.andrews@tscg.com

804.673.1100

CHRISTINA MAYHUGH

christina.mayhugh@tscg.com

804.673.1100