



M E R I D I A N

147 S. CHERRY STREET, SUITE 200 | WINSTON-SALEM, NC 27101 | P 336.722.1986 | F 336.723.3173 | MERIDIANREALTY.COM

LEASE: 5,084 - 11,108± SF Office

210 Charlois Boulevard, Suite 110 / 150

Winston-Salem, NC 27103



Superb office property for lease in Stratford Executive Park. Close to hospital, banks, restaurants, hotels, and Hanes Mall. Excellent access. Adjacent to Silas Creek Parkway and Salem Pkwy.

For more information:

Spencer T. Bennett, CCIM

Spencer@meridianrealty.com

336.480.2327

FOR LEASE: \$18.00 PSF Gross

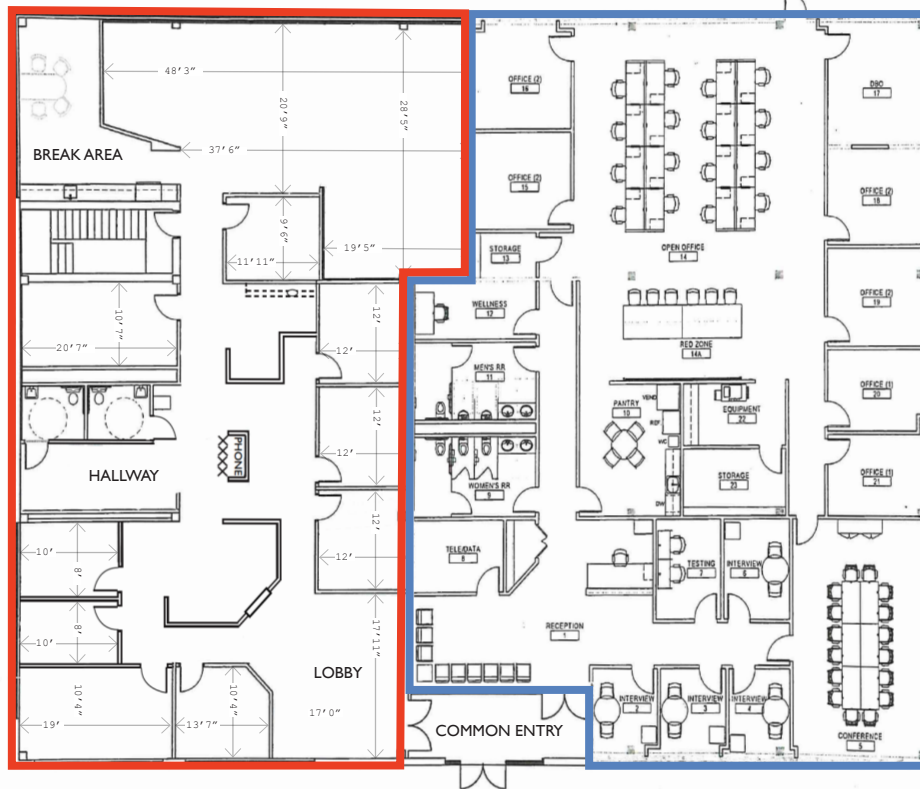
*excludes janitorial

WWW.MERIDIANREALTY.COM

FLOOR PLAN

Suite 110 | 5,084± SF
Available Now

Suite 150 | 6,024± SF
Available: July 1, 2026



- 5,084 to 11,108± SF
- Great location in Stratford Executive Park
- Improvements are like new
- Covered parking, 54 total spaces
- Close to hospital, banks, restaurants, hotels, & Hanes Mall
- Easy access to Silas Creek Pkwy & Salem Pkwy
- For Lease: \$18.00 PSF Full Service
 - Excludes Janitorial



No warranty or representation (express or implied) is made as to the accuracy or completeness of the information set forth herein. All information is submitted subject to errors, omissions, change of price, prior lease or sale, and withdrawal without notice. All marketing material produced by the Meridian Realty Group is proprietary. Any reproduction is expressly prohibited.



THE MERIDIAN REALTY GROUP | 147 S. CHERRY STREET, SUITE 200 | WINSTON-SALEM, NC 27101
P 336.722.1986 | F 336.723.3173