

# 575 SUTTER

Affordable.  
Flexible.  
Creative.

- Short and long term .....
- Streamlined lease process .....
- Occupy immediately .....

 **CHAD MITCHELL**  
— ASSOCIATES —  
COMMERCIAL REAL ESTATE

## SUITE 202

1,850 SF



Creative space with  
great natural light



Original hardwood floors



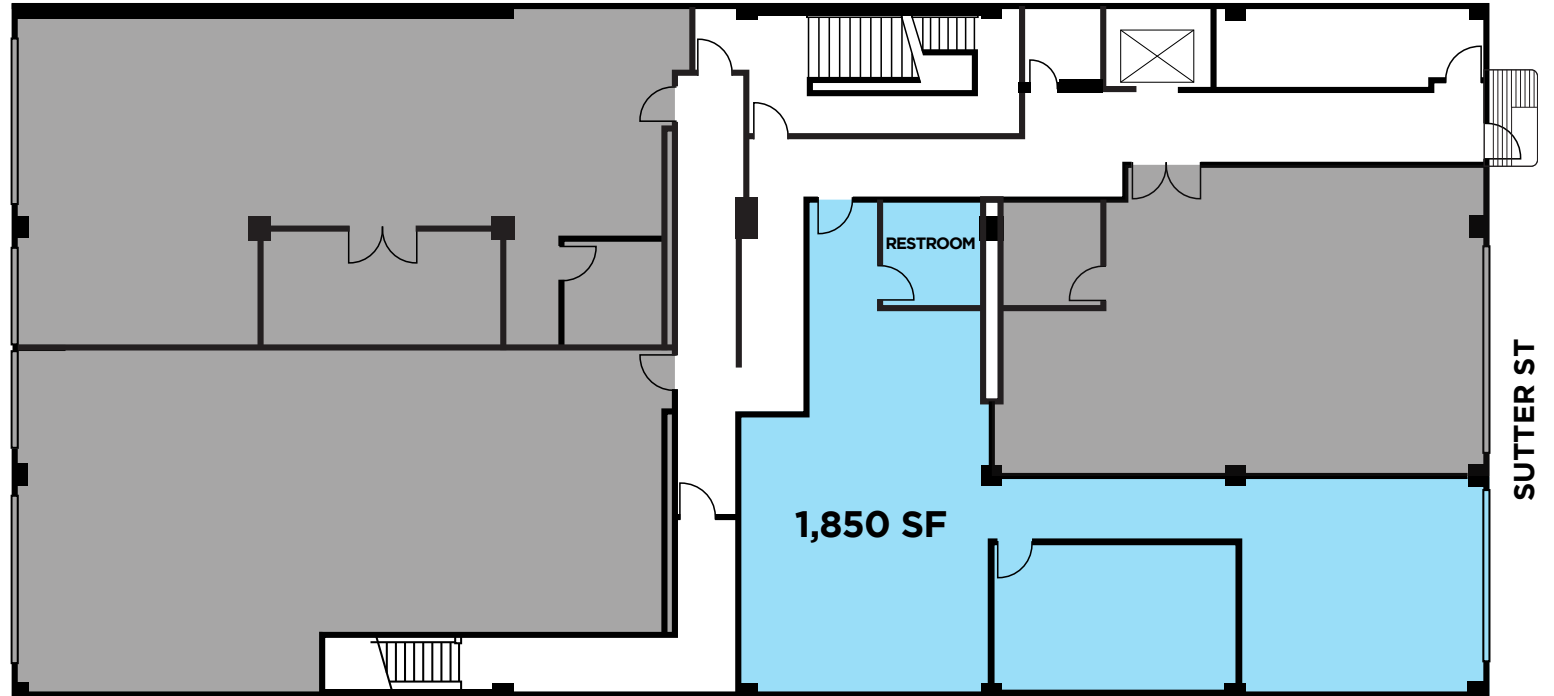
One conference rooms, one  
kitchenette, one ADA restrooms



Full HVAC

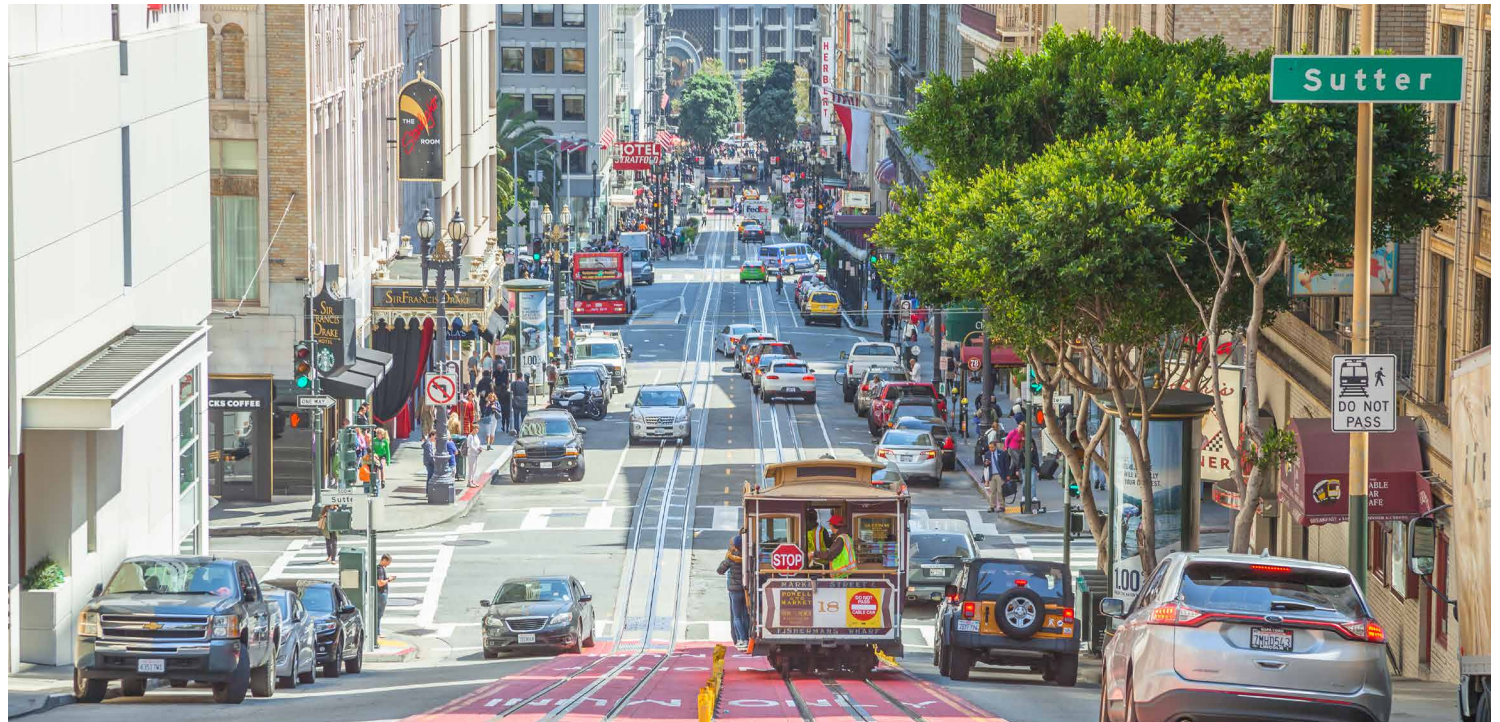


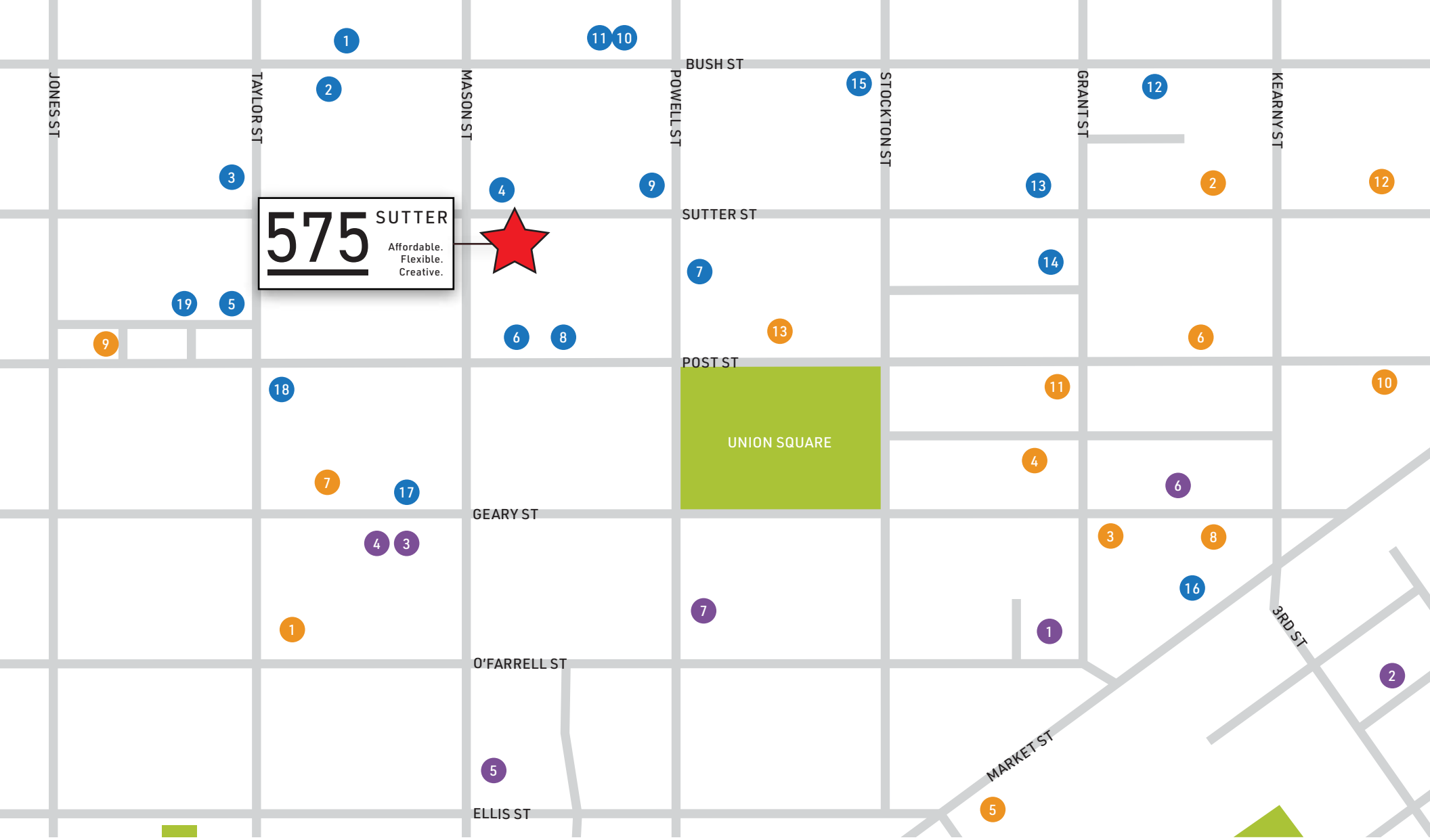
**FLOOR PLAN**  
2nd Fl



## LOCATION HIGHLIGHTS

- 3 blocks from Powell St station
- Situated among many restaurants and shopping





**575 SUTTER**  
Affordable.  
Flexible.  
Creative.

**TECH & CREATIVE OFFICES**

- 1. REDDIT HEADQUARTERS
- 2. HGA
- 3. BOLT
- 4. RAPT STUDIO
- 5. GERSHONI CREATIVE AGENCY
- 6. CISCO SYSTEMS
- 7. PALMER AD AGENCY
- 8. FIREWOOD MARKETING
- 9. ADEENI DESIGN
- 10. GOODDATA

- 11. VENABLES BELL + PARTNERS
- 12. ESSENCE ADVERTISING
- 13. GAUGER & ASSOCIATES

**FOOD & DRINK**

- 1. HOPWATER DISTRIBUTION
- 2. DEL POPOLO
- 3. SANRAKU
- 4. HOGWASH
- 5. RYOKO'S
- 6. CAFE LA TAZA

- 7. SCALA'S BISTRO
- 8. FARALLON
- 9. LORI'S DINER
- 10. SONS & DAUGHTERS
- 11. BEANSTALK CAFE
- 12. LE CENTRAL
- 13. E&O KITCHEN AND BAR
- 14. HOPS & HOMINY
- 15. BOUCHE
- 16. MAZARINE COFFEE
- 17. KATANA YA

- 18. HONEY HONEY CAFE
- 19. LE COLONIAL

**ENTERTAINMENT**

- 1. MUSEUM OF ICE CREAM
- 2. CALIFORNIA HISTORICAL SOCIETY
- 3. ACT GEARY THEATER
- 4. CURRAN THEATER
- 5. FEINSTEIN'S AT THE NIKKO
- 6. HAWTHORN
- 7. SAM'S CABLE CAR LOUNGE

# 575 SUTTER

Affordable.  
Flexible.  
Creative.

415.274.2025

**CHAD ELKIN**

Lic. # 01426967  
chad@cma-re.com

**EDUARDO ZEPEDA**

Lic. # 01757182  
ez@cma-re.com

 **CHAD MITCHELL**  
— ASSOCIATES —  
COMMERCIAL REAL ESTATE

**AHK** GROUP