

MEDICAL OFFICE FOR LEASE

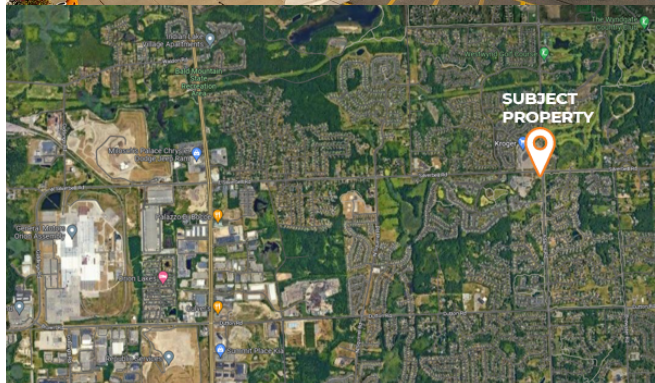
4986 N. Adams Rd.
Oakland Township, MI



Country Creek Commons Professional Office Building

FEATURES

- 3,688 SF upscale 2nd Generation medical office space available for lease
- Asking \$17.50 PSF NNN
- Competitive build out allowance
- Abundant free surface parking spaces
- Newer construction
- Large basement provides for available storage
- Nicely finished medical suites
- Excellent demographics; Affluent avg. HH income
- Adjacent to shopping center amenities: restaurants, grocery, services and entertainment
- Conveniently located at the intersection of Adams & Silverbell Roads



	1 MILE	3 MILES	5 MILES
Population	5,313	34,649	95,733
Total Households	1,880	12,762	37,073
Average Household Income	\$231,998	\$179,711	\$134,431

James Mitchell

Assistant Vice President
Work 248.399.9999 x253
Cell 248.961.0843
jmittell@dominionra.com

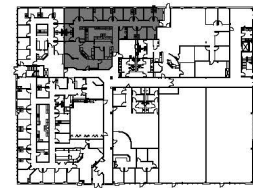
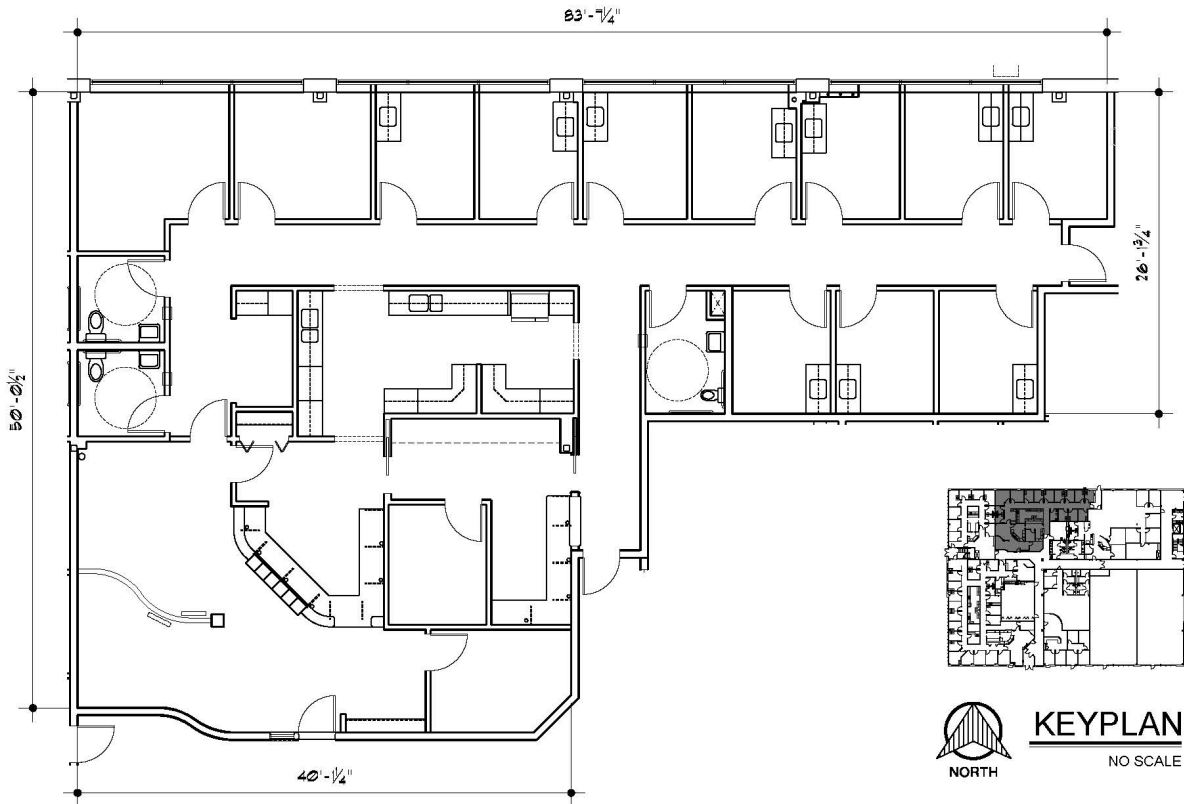
Eric Banks

Group President
Work 248.399.9999 x102
Cell 248.760.2525
ebanks@dominionra.com



DOMINION
REAL ESTATE ADVISORS

FLOOR PLAN



KEYPLAN

NO SCALE



SUITE C
COUNTRY CREEK COMMONS
OAKLAND TWP., MICHIGAN

3,215 U.S.F. / 3,688 R.S.F.

SCALE: 3/32" = 1'-0"

James Mitchell

Assistant Vice President
Work 248.399.9999 x253
Cell 248.961.0843
jmittell@dominionra.com

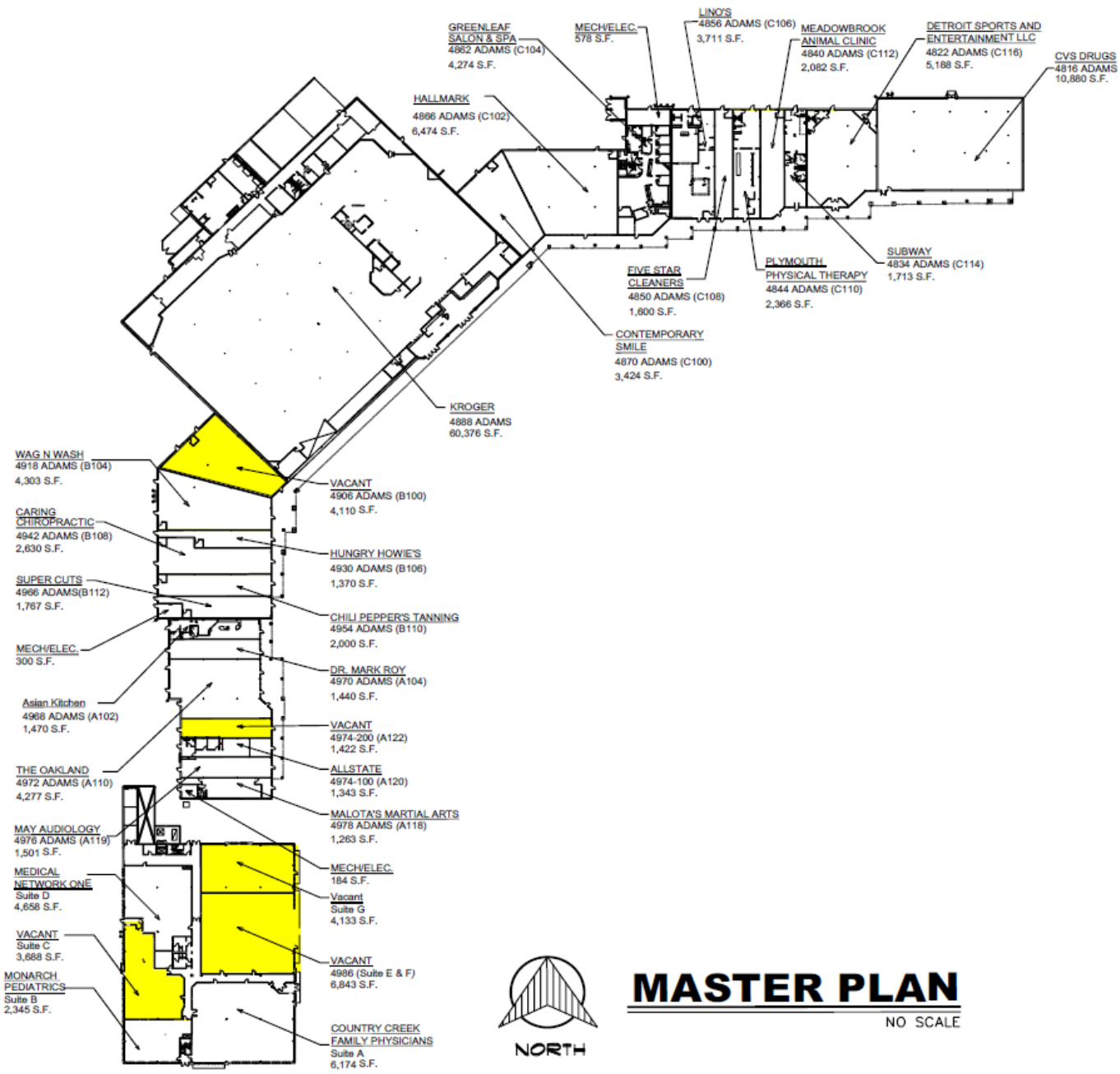
Eric Banks

Group President
Work 248.399.9999 x102
Cell 248.760.2525
ebanks@dominionra.com



DOMINION
REAL ESTATE ADVISORS

SITE PLAN



MASTER PLAN

NO SCALE

James Mitchell
Assistant Vice President
Work 248.399.9999 x253
Cell 248.961.0843
jmittell@dominionra.com

Eric Banks
Group President
Work 248.399.9999 x102
Cell 248.760.2525
ebanks@dominionra.com

