

FOR LEASE

OFFICE

www.equitymillrealestate.com



EQUITY MILL
REAL ESTATE



Suite	Size	Base Rent Rate
100	15,681 SF +/-	\$15.00 PSF*
125	2,115 SF	\$15.00 PSF*
400	2,500 – 4,336 SF	\$15.00 PSF*
A	12,916 SF – 20,164 SF	\$15.00 PSF*
B	7,248 SF – 20,164 SF	\$15.00 PSF*

**1684 Woodlands Drive
Maumee, OH 43537**

- Great Value in Arrowhead Park
- Professionally managed & maintained
- Access to walking trails, outdoor areas
- On-site fitness center
- Easy access to US-23/I-475 & Ohio Turnpike (80/90)
- Close proximity to restaurants, banking centers, hotels & shopping

Year Completed: 1993 **Last Renovated-** 2023

Building Size: 68,093 Square Feet

Zoning: C-M

Parcel: 35-00471,35-00501,35-00491 & 36-41011

Acreage: 6.86 acres

Parking Spaces: 423 +/-

Curb Cuts: 1

Construction Type: Brick, Steel

Elevators: 1

Ceiling Height: Varies; 8'6 – 20'

Telecomm: Buckeye Broadband

Signage: Monument

Floors: 2

Type of Floor: Concrete

Public Transportation: TARTA Call a ride

Nearest Intersection: Indian Wood Circle

*Tenant responsible for their own utilities, in-suite janitorial and their pro-rata share of costs exceeding base year expenses.



For More Information Contact
JEREMY MILLER

419-450-6854
jmiller@equitymillrealestate.com

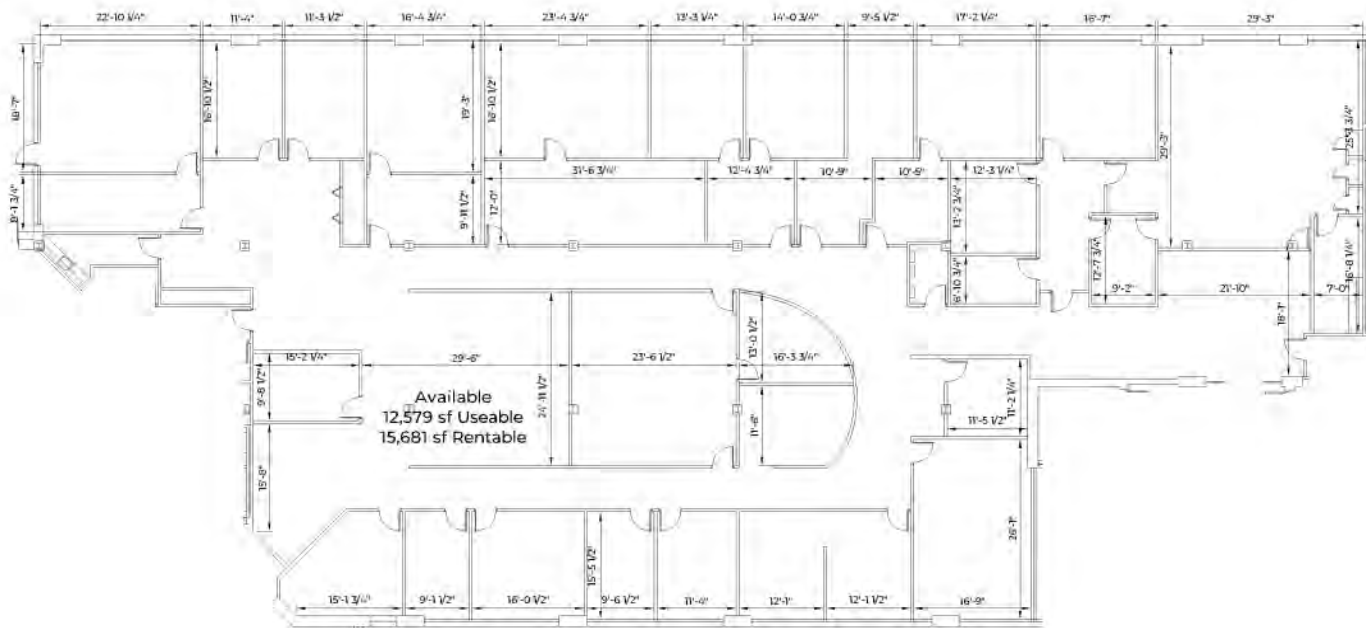
OFFICE FOR LEASE

1684 Woodlands Drive Suite 100
Maumee, OH 43537

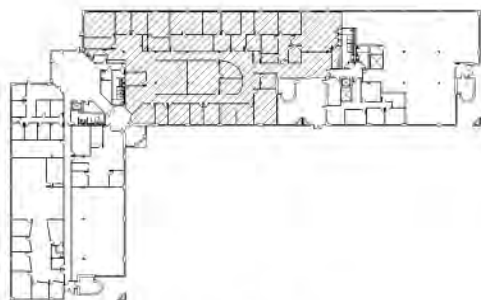
www.equitymillrealestate.com



EQUITY MILL
REAL ESTATE



USEABLE AREA: 12,579 SF
RENTABLE AREA: 15,681 SF



BUILDING KEY
NO SCALE



For More Information Contact
JEREMY MILLER

419-450-6854
jmiller@equitymillrealestate.com

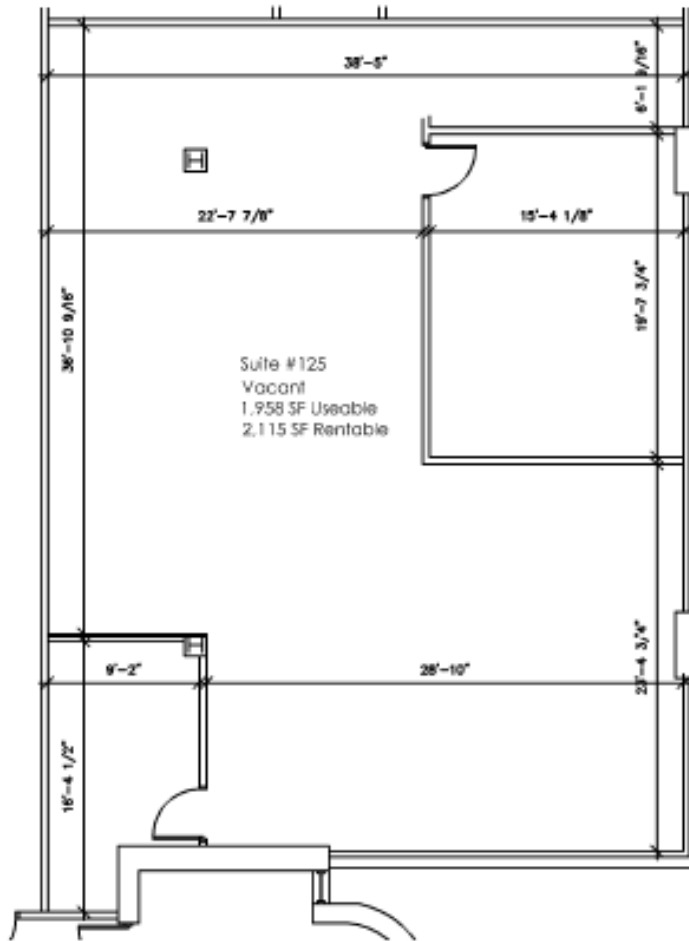
OFFICE FOR LEASE

1684 Woodlands Drive Suite 125
Maumee, OH 43537

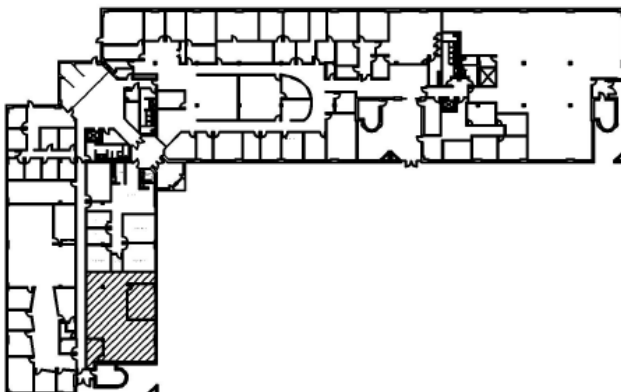
www.equitymillrealestate.com



EQUITY MILL
REAL ESTATE



USEABLE AREA: 1,958 SF
RENTABLE AREA: 2,115 SF



BUILDING KEY
NO SCALE



For More Information Contact
JEREMY MILLER

419-450-6854
jmiller@equitymillrealestate.com

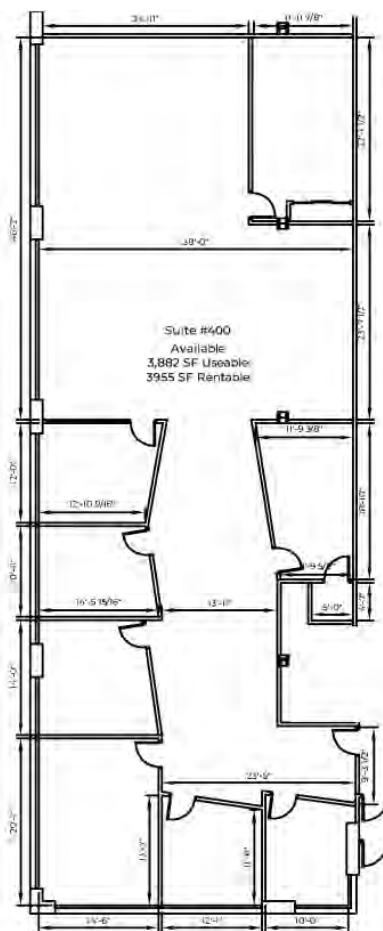
OFFICE FOR LEASE

**1684 Woodlands Drive Suite 400
Maumee, OH 43537**

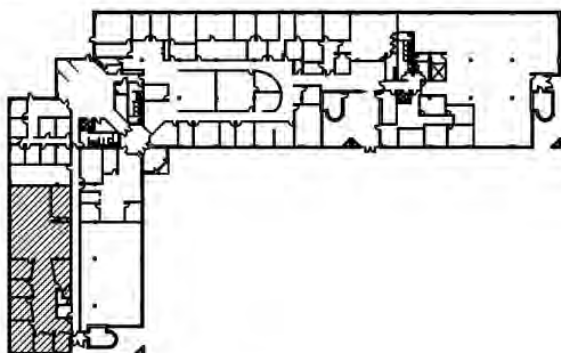
www.equitymillrealestate.com



EQUITY MILL
REAL ESTATE



USEABLE AREA: 3,882 SF
RENTABLE AREA: 3,955 SF



BUILDING KEY
NO SCALE



EQUITY MILL
REAL ESTATE



EQUITY MILL
REAL ESTATE

For More Information Contact
JEREMY MILLER

419-450-6854
jmillier@equitymillrealestate.com

2023. Licensed Real Estate Broker. All information submitted may be subject to errors and omissions. No warranty or representation is made to the accuracy of the information contained herein.

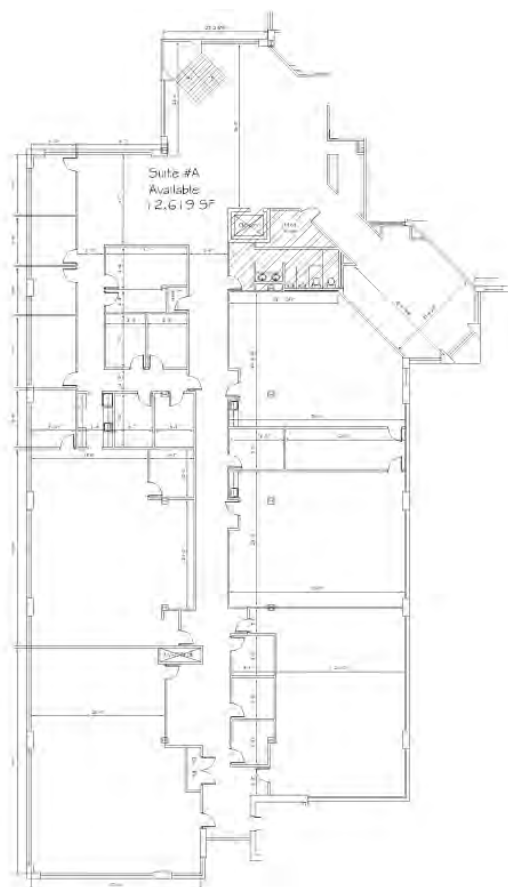
OFFICE FOR LEASE

1684 Woodlands Drive Suite A
Maumee, OH 43537

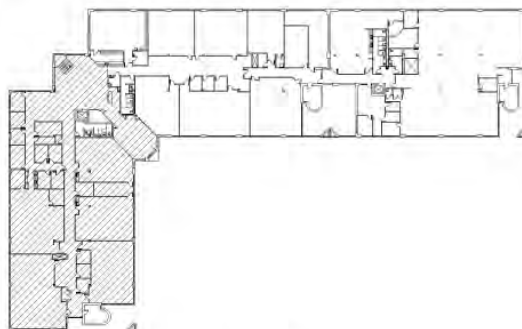
www.equitymillrealestate.com



EQUITY MILL
REAL ESTATE



USEABLE AREA: 12,916 SF
RENTABLE AREA: 12,916 SF



BUILDING KEY
NO SCALE



EQUITY MILL
REAL ESTATE



For More Information Contact
JEREMY MILLER

419-450-6854
jmiller@equitymillrealestate.com

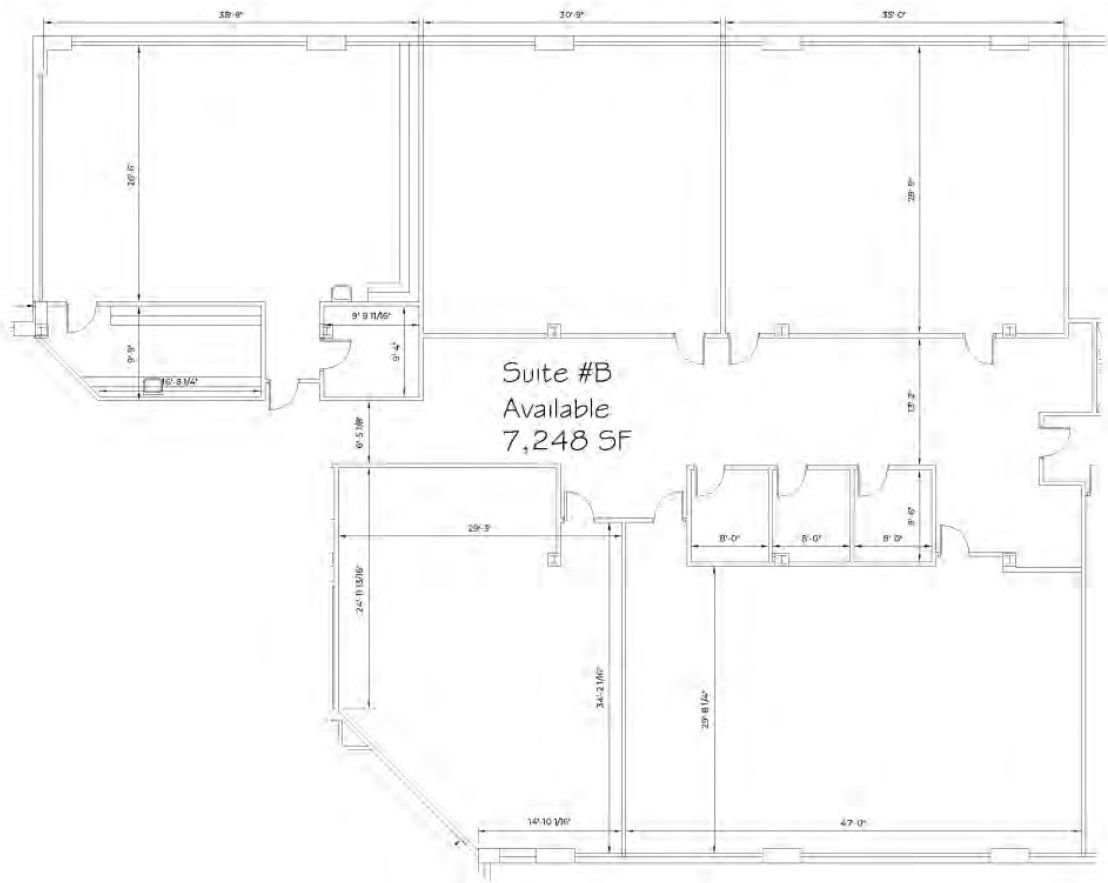
OFFICE FOR LEASE

1684 Woodlands Drive Suite B
Maumee, OH 43537

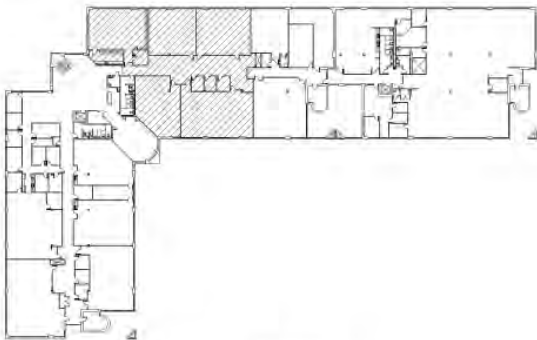
www.equitymillrealestate.com



EQUITY MILL
REAL ESTATE



USEABLE AREA: 7,248 SF
RENTABLE AREA: 7,248 SF



BUILDING KEY
NO SCALE



For More Information Contact
JEREMY MILLER

419-450-6854
jmiller@equitymillrealestate.com

OFFICE FOR LEASE

1684 Woodlands Drive Maumee, OH
43537



www.equitymillrealestate.com

EQUITY MILL
REAL ESTATE

Location Facts & Demographics

Demographics are determined by a 10 minute drive from 1684 Woodlands Dr, Maumee, OH 43537

CITY, STATE

Maumee, OH

POPULATION

26,858

AVG. HHSIZE

2.31

MEDIAN HH INCOME

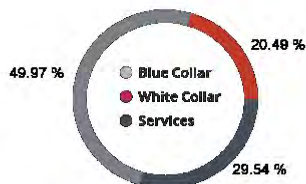
\$58,852

HOME OWNERSHIP

Renters: **5,424**

Owners: **6,557**

EMPLOYMENT



50.00 %

Employed

1.46 %

Unemployed

GENDER & AGE

48.07 %



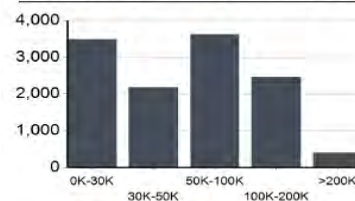
51.93 %



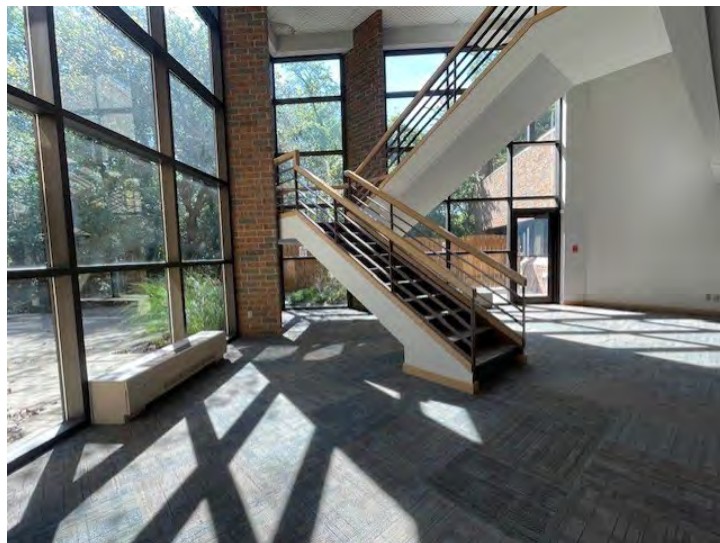
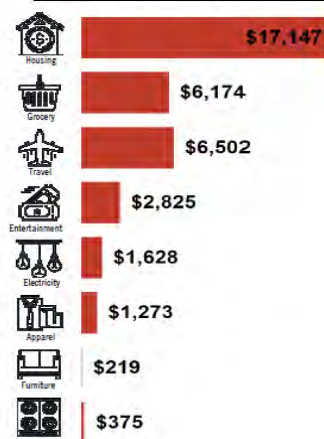
RACE & ETHNICITY

White:	79.01 %
Asian:	1.94 %
Native American:	0.00 %
Pacific Islanders:	0.02 %
African-American:	9.52 %
Hispanic:	4.84 %
Two or More Races:	4.67 %

INCOME BY HOUSEHOLD



HH SPENDING



For More Information Contact
JEREMY MILLER

419-450-6854

jmiller@equitymillrealestate.com