

# MODERN CLASS A OFFICE CONDO

950 RESERVE DRIVE Suite #100  
ROSEVILLE CA 95678

# FOR LEASE

+/-3,250 Square Feet

FULLY FURNISHED



Exclusive Agents:

Tony Wood, SIOR  
Director of Leasing and Sales  
916.390.1274 tony@tonywoodcommercial.com  
CA DRE #00549071

GRETCHEN TOBIN  
(916) 425-7711  
gretchentobin@kw.com  
CA DRE #00937965



# MODERN CLASS A OFFICE CONDO

# FOR LEASE

950 RESERVE DR #100, ROSEVILLE CA 95678

## PROPERTY INFORMATION

- ±3,250 Square Feet

### FOR LEASE

- \$1.65 / SF Modified Gross
- Six Private Offices, Two restrooms, Kitchen & 2 Open Areas
- Located Directly Adjacent to the Fountains at Roseville Shopping Center
- Walking Distance to Westfield Galleria
- Minutes from Interstate 80 and Highway 50

Modern style, one of a kind unit, Class A Commercial Office Condo with ±3,250 Square Feet. Located adjacent to one of Roseville's most popular high-end shopping centers, within walking distance to the Roseville Galleria, minutes from I-80 & Hwy 65 and ready for immediate occupancy.



The information contained herein has been obtained from sources believed to be reliable; however, KW Commercial has not verified, and will not verify, any of the information contained herein, nor has KW Commercial conducted any investigation regarding these matters and makes no warranty or representation whatsoever regarding the accuracy or completeness of the information provided. All potential buyers or tenants must take appropriate measures to verify all of the information set forth herein

### Exclusive Agents:

Tony Wood, SIOR

Director of Leasing and Sales

916.390.1274 tony@tonywoodcommercial.com

CA DRE #00549071

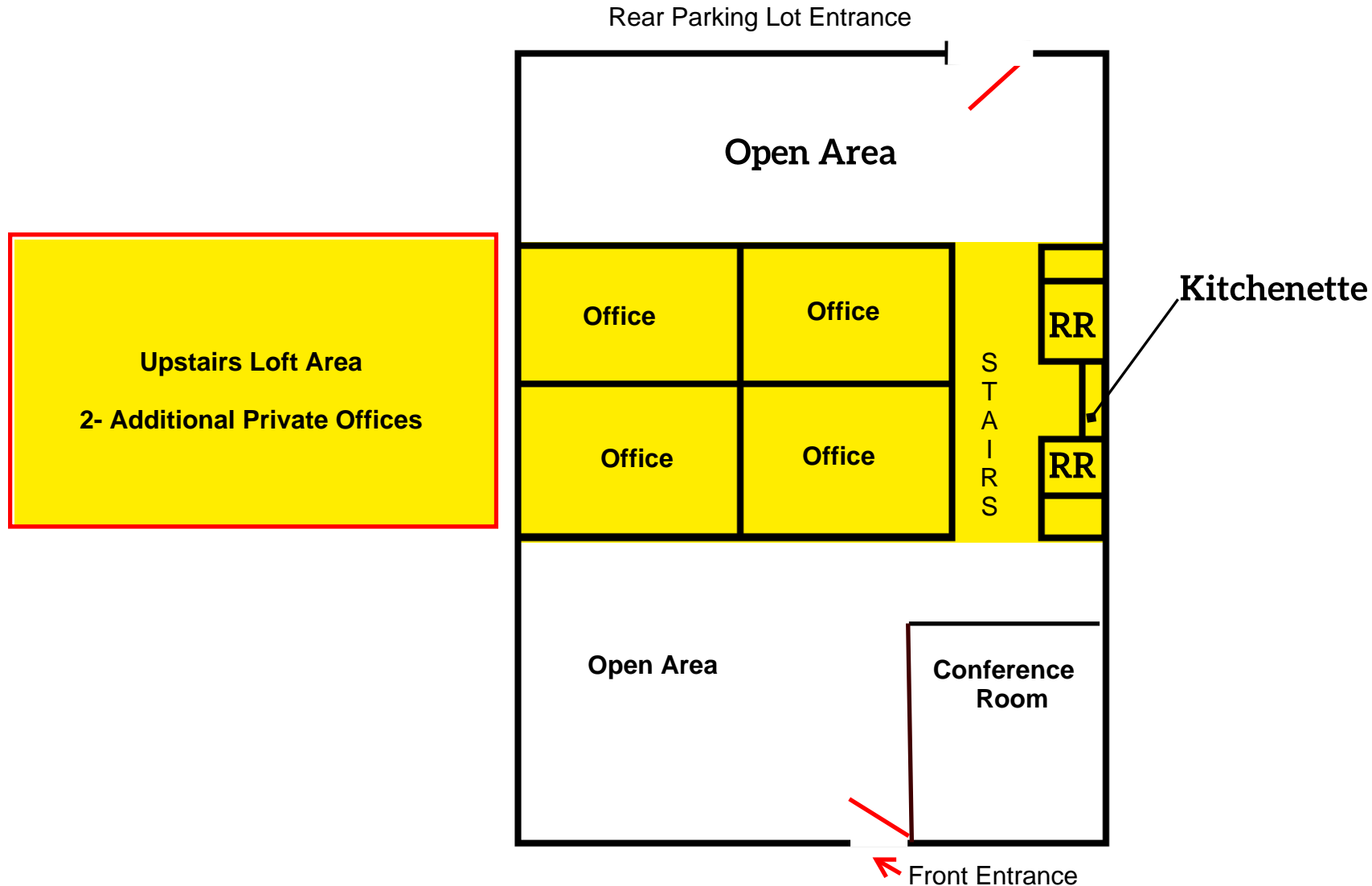


# MODERN CLASS A OFFICE CONDO

# FOR LEASE

950 RESERVE DR #100, ROSEVILLE CA 95678

## FLOOR PLAN



The information contained herein has been obtained from sources believed to be reliable; however, KW Commercial has not verified, and will not verify, any of the information contained herein, nor has KW Commercial conducted any investigation regarding these matters and makes no warranty or representation whatsoever regarding the accuracy or completeness of the information provided. All potential buyers or tenants must take appropriate measures to verify all of the information set forth herein.



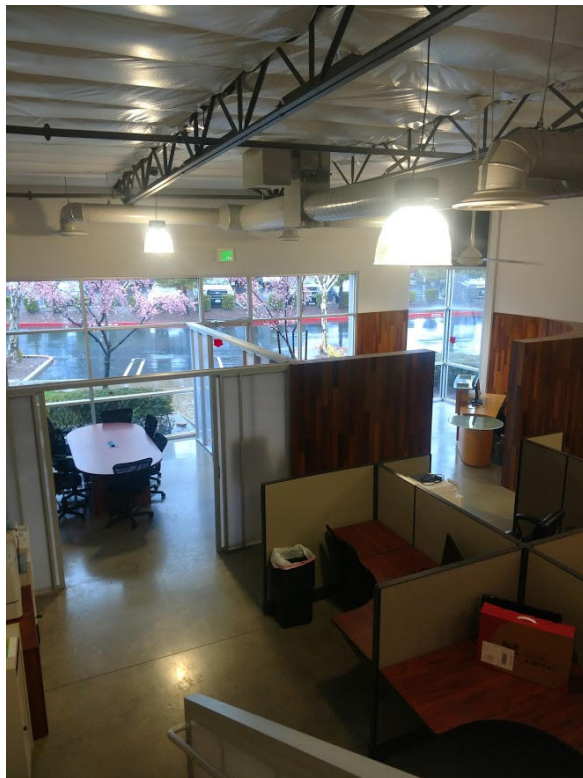
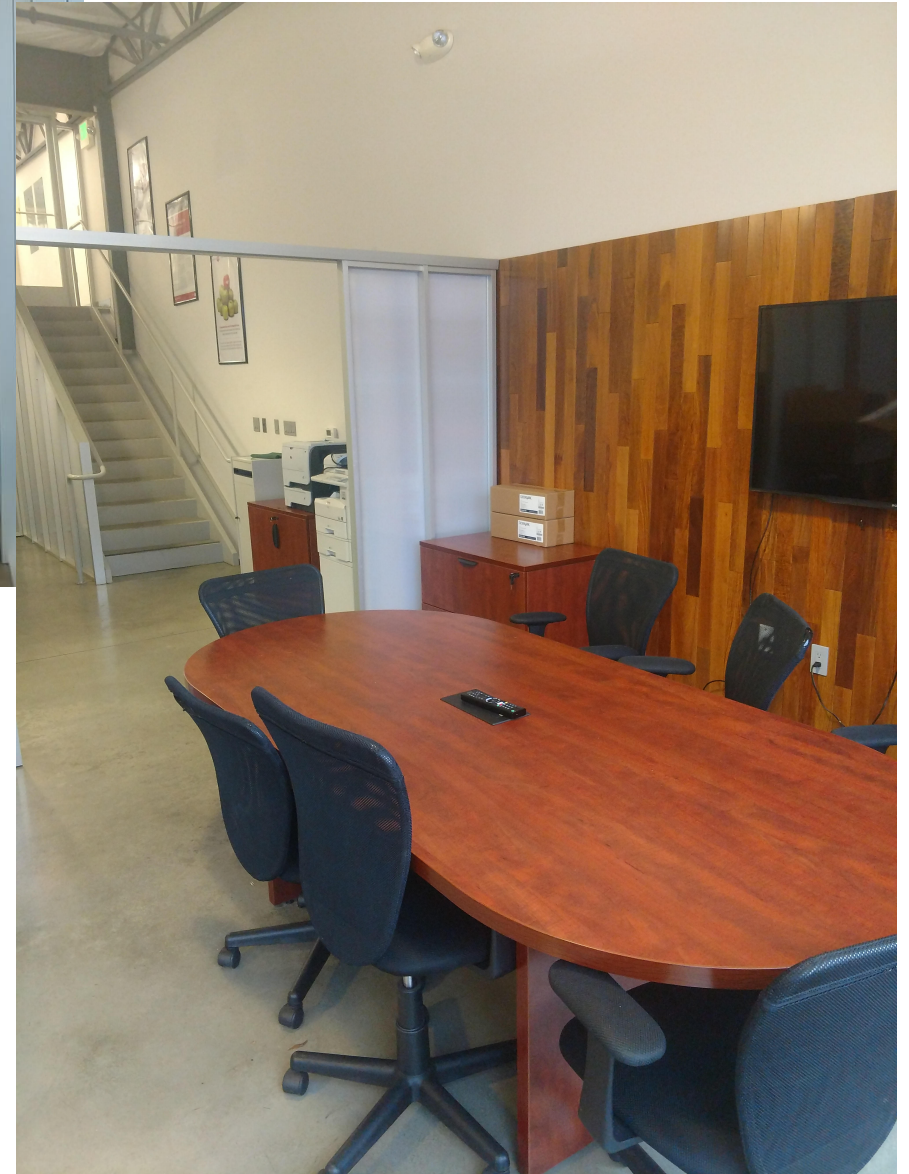
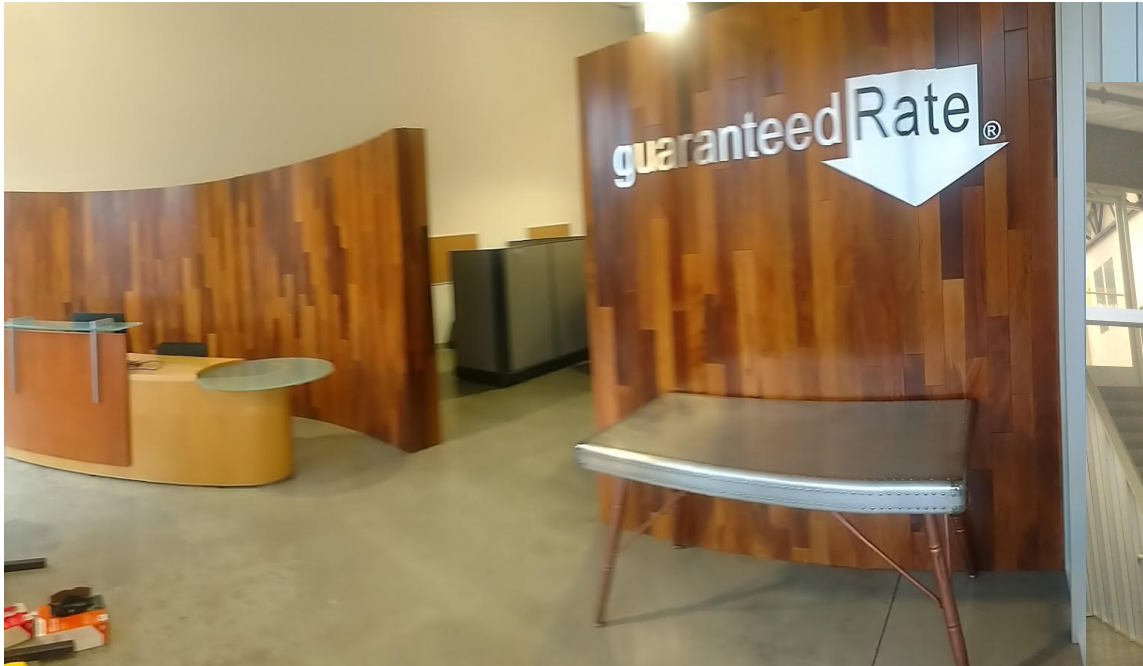








# Interior Photographs



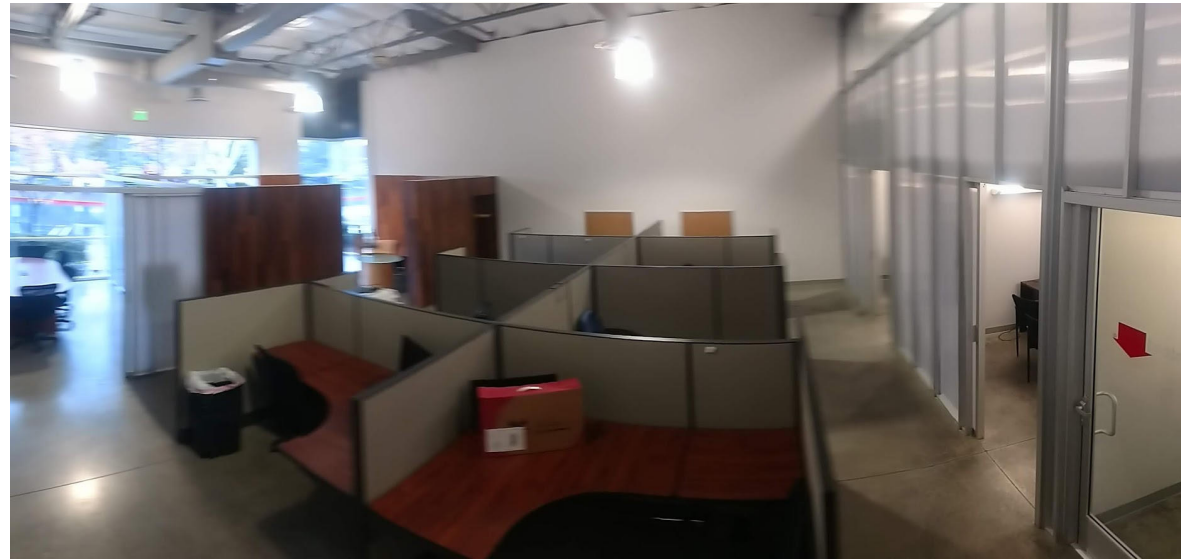


FRONT CONFERENCE ROOM



# Interior Photographs

FRONT WORKSTATIONS AREA



REAR ENTRANCE LOBBY AND WORKSTATIONS AREA









# MODERN CLASS A OFFICE CONDO

950 RESERVE DR #100, ROSEVILLE CA 95678

FOR LEASE

## RETAIL AERIAL MAP





For Additional information contact:

Exclusive Agent:

Tony Wood, SIOR, Director of Leasing and Sales  
KW Commercial Real Estate Services  
Phone: 916.390.1274

Email: [Tony@TonyWoodCommercial.com](mailto:Tony@TonyWoodCommercial.com)  
CA DRE Lic.#00549071

[WWW.TonyWoodCommercial.com](http://WWW.TonyWoodCommercial.com)



The information contained herein has been obtained from sources believed to be reliable; however, KW Commercial has not verified, and will not verify, any of the information contained herein, nor has KW Commercial conducted any investigation regarding these matters and makes no warranty or representation whatsoever regarding the accuracy or completeness of the information provided. All potential buyers or tenants must take appropriate measures to verify all of the information set forth herein