

# OFFICE / WAREHOUSE SPACE FOR LEASE

# 316 FRONT STREET

EL CAJON, CA 92020



## PROPERTY FEATURES



± 1,600 SF  
Office / Industrial



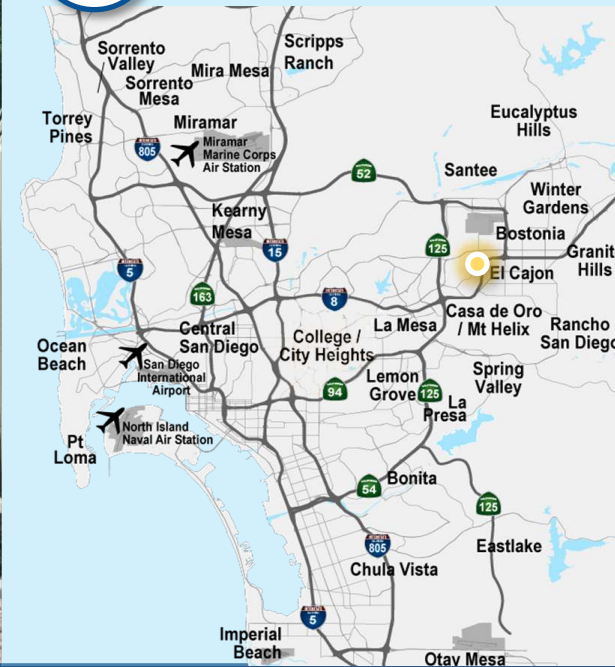
Fenced & Secured  
Parking



Zoning: El Cajon M-Zone  
(Manufacturing)



Easy Access to I-8 and  
Hwy 67



**NICK MANE** | Lic. 01939391  
Associate Vice President  
Nick@PacificCoastCommercial.com

**KEN ROBAK** | Lic. 01236527  
Vice President of Brokerage  
Ken@PacificCoastCommercial.com

**JASMINE GOLIA** | Lic. 02131001  
Sales & Leasing Associate  
Jasmine@PacificCoastCommercial.com

Tel. 619.469.3600 | 10721 Treena St., Suite 200, San Diego, CA 92131 | www.PacificCoastCommercial.com | Lic. 01209930

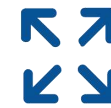
The information contained herein has been given to us by the owner of the property or other sources we deem reliable, we have no reason to doubt its accuracy, but we do not guarantee it. All information including zoning, financials, leases, floorplans, square footage, permits and use should be verified during due diligence and prior to completing a transaction.

  
**PACIFIC COAST  
COMMERCIAL**  
SALES - MANAGEMENT - LEASING



ROBAK  
GROUP

## SUITE 101 FEATURES



± 1,600 SF  
Office / Industrial



4 Private Offices



Reception Area



Storage Closet



Restroom



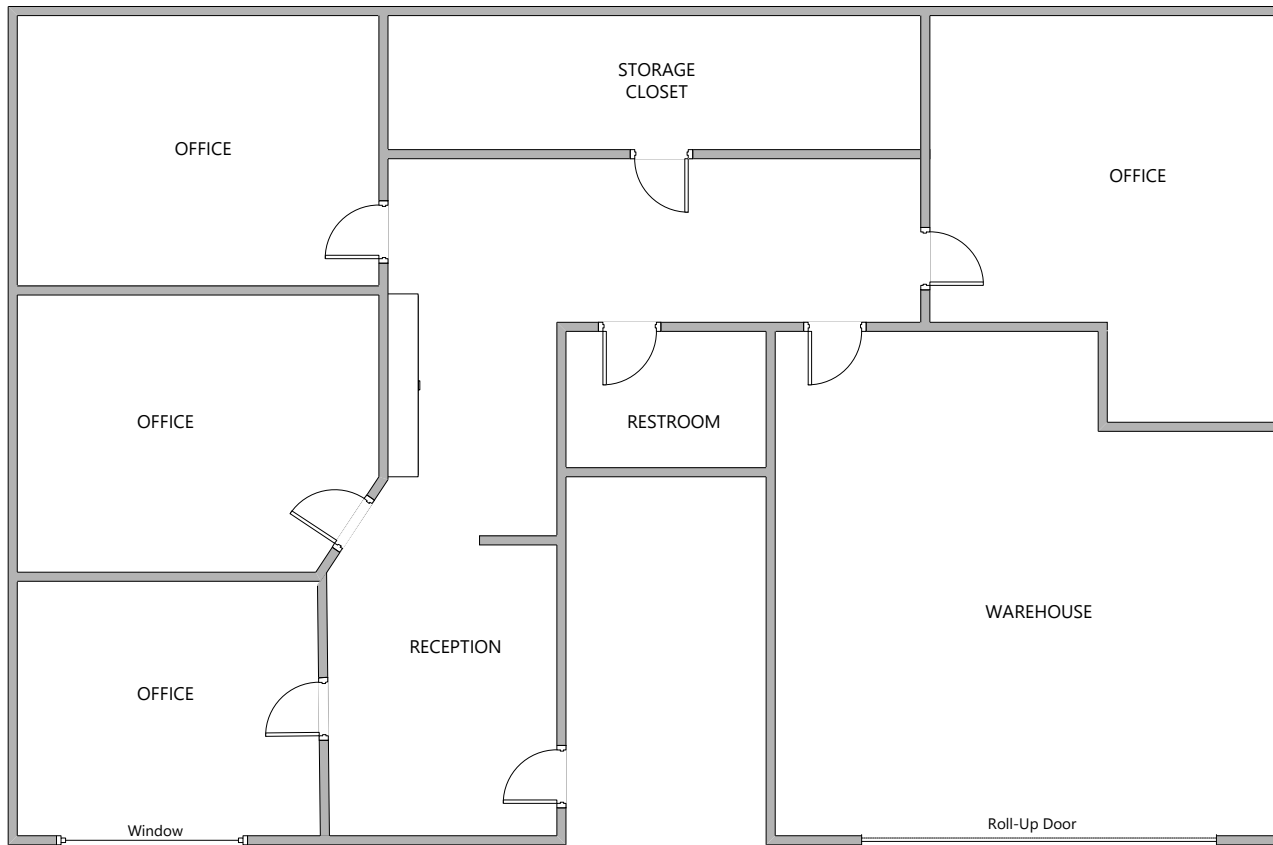
Warehouse w/Roll-Up Door



Lease Rate: \$2,200 Per Month + Elec.



Floor Plan Not Fit to Scale;  
for Reference Purposes Only.



**NICK MANE** | Lic. 01939391  
Associate Vice President  
Nick@PacificCoastCommercial.com

**KEN ROBAK** | Lic. 01236527  
Vice President of Brokerage  
Ken@PacificCoastCommercial.com

**JASMINE GOLIA** | Lic. 02131001  
Sales & Leasing Associate  
Jasmine@PacificCoastCommercial.com

Tel. 619.469.3600 | 10721 Treena St., Suite 200, San Diego, CA 92131 | www.PacificCoastCommercial.com | Lic. 01209930

The information contained herein has been given to us by the owner of the property or other sources we deem reliable, we have no reason to doubt its accuracy, but we do not guarantee it. All information including zoning, financials, leases, floorplans, square footage, permits and use should be verified during due diligence and prior to completing a transaction.

**PACIFIC COAST  
COMMERCIAL**  
SALES - MANAGEMENT - LEASING

