

Florin Medical Center

Medical/Dental/ Professional Office Suites for Lease

7275 E. Southgate Drive, Sacramento, CA 95823

RE/MAX
COMMERCIAL

Ranga Pathak
Broker Associate
Tel: (916)201-9247
CA DRE 01364897

RE/MAX Gold, 2998 Douglas Boulevard, Suite 125, Roseville, CA 95661 Tel: (916)218-7500; Fax: (916)218-7510

Florin Medical Center Medical/Dental | Professional | Office Suites for Lease

7275 E. Southgate Drive, Sacramento, CA 95823



Property Highlights:

Available sq. ft.:	18,822 s.f.
Building size:	41,020 s.f.
Rentable s.f.:	37,679 s.f.
Available suites:	893 s.f. to 3,730 s.f.
Lease Rate:	\$ 1.25 per sf modified gross
Lot size:	3.24 acres
Type:	Medical/Dental/Professional Office

Property and Location Overview:

The property is comprised of two 2-story buildings totaling 41,020 square feet with 31 individual medical, dental or professional suites. Located on 3.24 acres of land, the property features abundant parking and landscaped common areas. Florin Medical Center is situated in the heart of the South Sacramento Submarket of the Sacramento Metropolitan Area.

Originally built in 1966, this beautifully maintained property includes two buildings of approximately 20,000 square feet each, connected by a covered breezeway with a lush garden courtyard in between. The property enjoys easy access to Highway 99 from Florin Road. Spaces are available for immediate occupancy for office and medical users alike.

South Sacramento submarket has about 4 million sf of office space, making it one of the metro's larger office submarkets. The property is located off Florin Road, one of the major arterial roads in South Sacramento and in the immediate vicinity of highway 99, which connects the area to Downtown/midtown Sacramento and other parts of the Sacramento metro area easily.

Ranga Pathak
Broker Associate
Tel: (916)201-9247
CA DRE 01364897

RE/MAX
COMMERCIAL

Florin Medical Center Medical/Dental | Professional | Office Suites for Lease

7275 E. Southgate Drive, Sacramento, CA 95823

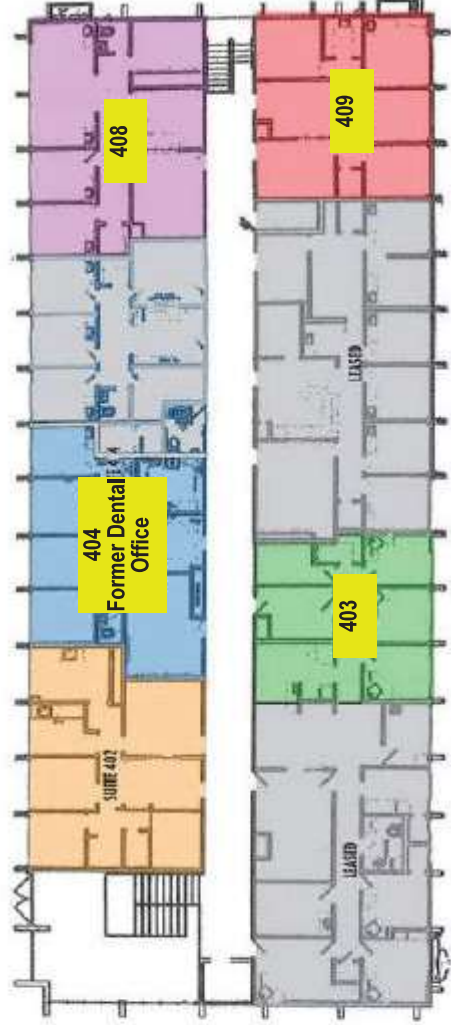
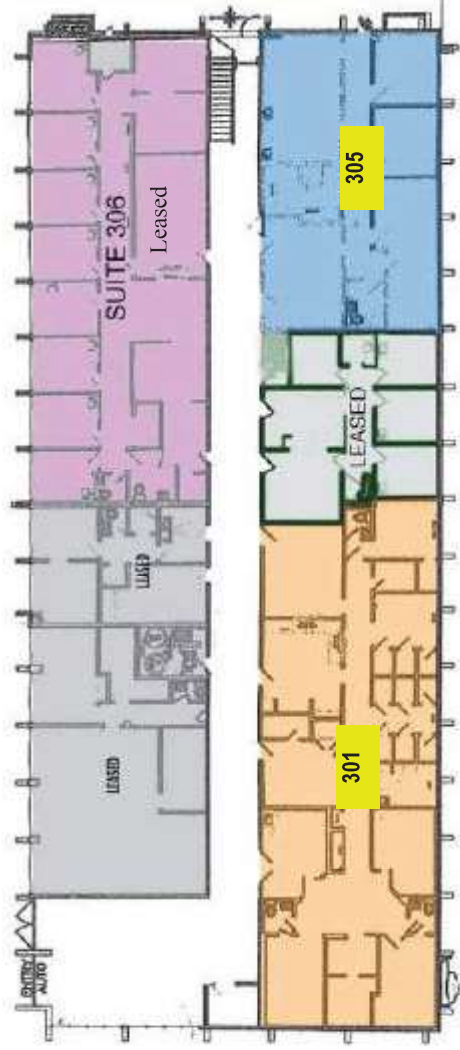


North building	
Suite No.	Size (sf)
103-105	2,307
107	1,069
201-203	2,410
202	1,054
204	1,784
206	893
208	901
Total	10,418

Florin Medical Center

Medical/Dental | Professional | Office Suites for Lease

7275 E. Southgate Drive, Sacramento, CA 95823



South building

Suite No.	Size (sf)
301	2,735
305	1,373
403	989
404	1,041
408	1,274
409	992
Total	8,404

Florin Medical Center

Medical/Dental | Professional | Office Suites for Lease

7275 E. Southgate Drive, Sacramento, CA 95823

