

FOR SALE

18205 KEELE ST.

BOSLEY
COMMERCIAL



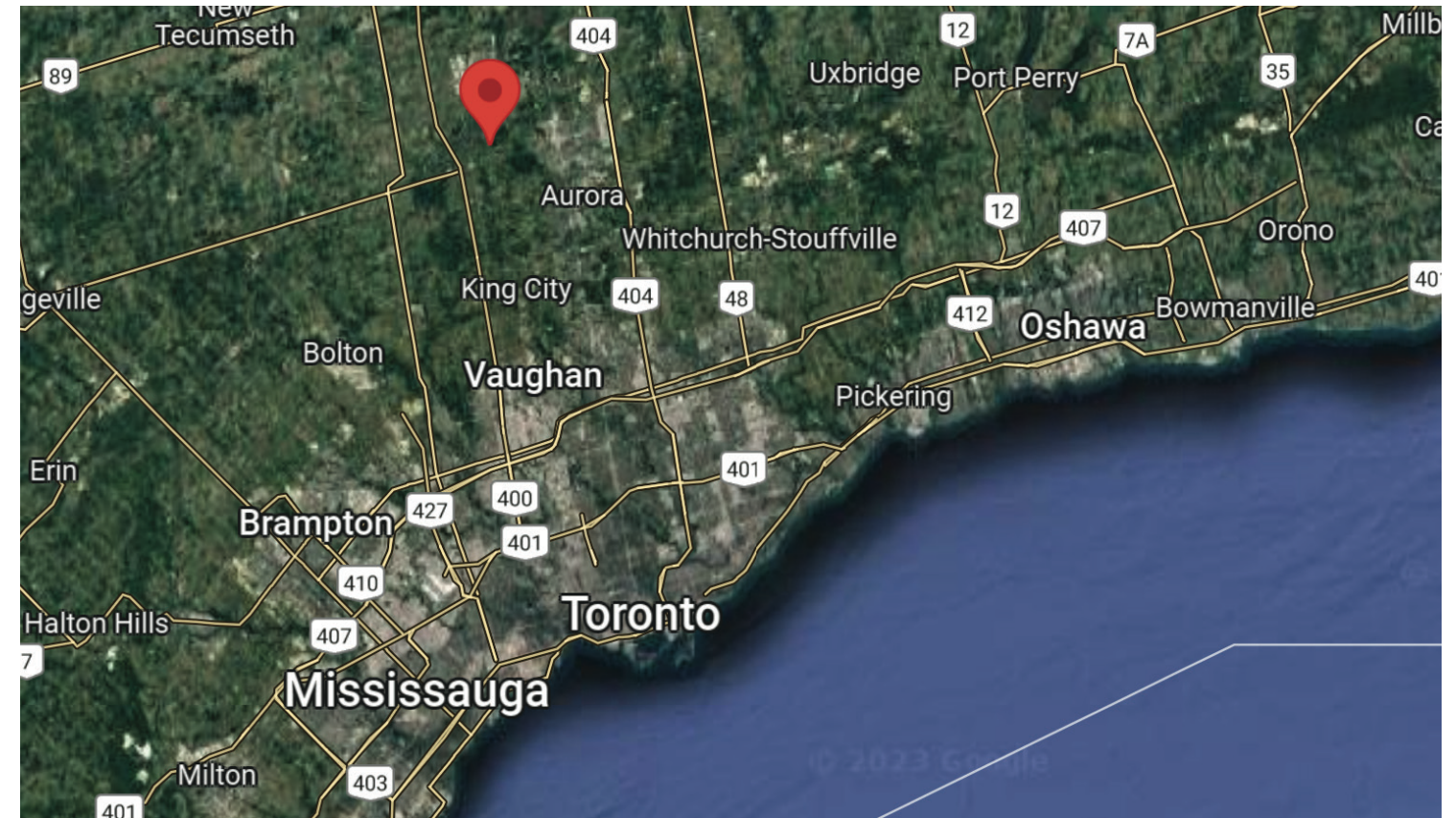
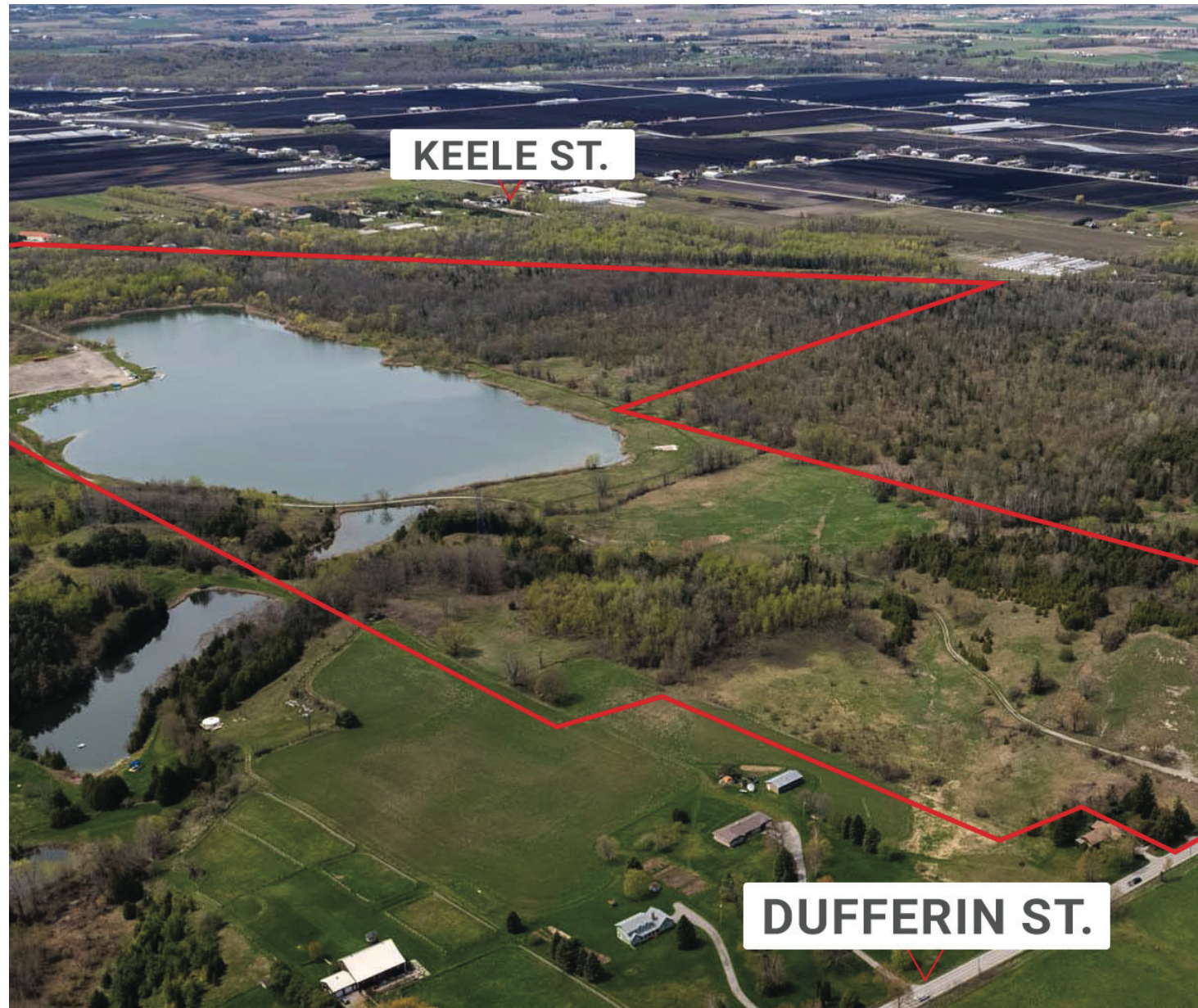
PRIME COMMERCIAL
DEVELOPMENT OPPORTUNITY

SITE AREA: 246.21 ACRES | LOCATIONS: HWY #400+ HWY #9
TAXES (2022): \$9,528.51 | ZONING: M3/RU1

SALE PRICE: \$14,998,888.00

FOR SALE
18205 KEELE ST.

FOR SALE
18205 KEELE ST.



PROPERTY INFO

Attn users and developers! This 246-ac parcel, only 30 min from Toronto, offers a unique opportunity for ind aggregate rx zoning, making it a prime location for those in the aggregate or development industry. With its current use and long-term land hold opportunity, this property is a smart investment for any savvy operator/developer. If you're looking to expand or start a new operation, this property has the potential to be a game-changer for your business. The existing 43-acre lake was once a pit can be drained or filled to allow for your operation. Minutes from Highway #400 and Davis Drive. 13 Minutes to the new Bradford by-pass and 17 min to the new Hwy #412 Interchange.

FOR SALE
18205 KEELE ST.

FOR SALE
18205 KEELE ST.



FOR SALE
18205 KEELE ST.

FOR SALE
18205 KEELE ST.



CONTACT FOR MORE INFO



BRAD GIBSON

REALTOR®

O: 416-322-8000 | C: 416-648-5020
BRAD@GIBSONPROPERTIES.CA

BOSLEY

COMMERCIAL

BOSLEY REAL ESTATE LTD., BROKERAGE
103 VANDERHOOF AVENUE, TORONTO, ON
416-322-8000 | BOSLEYREALESTATE.COM

All information and statements contained herein, provided by Bosley Real Estate Ltd., Brokerage regarding property for sale, rental or financing is from sources deemed reliable and assumed correct, but no warranty or representation is made as to the accuracy thereof and same as submitted subject to errors, omissions, change of price, rental or other conditions, prior sale or withdrawal without notice.