



Carlow Corporate Center

Bolingbrook, Illinois

BRAND NEW SPEC BUILDING OFFERING 402,051 SF (DIVISIBLE/EXPANDABLE)

CARLOW XVII - DELIVERING Q3 2021

925 DALTON LANE, BOLINGBROOK, IL

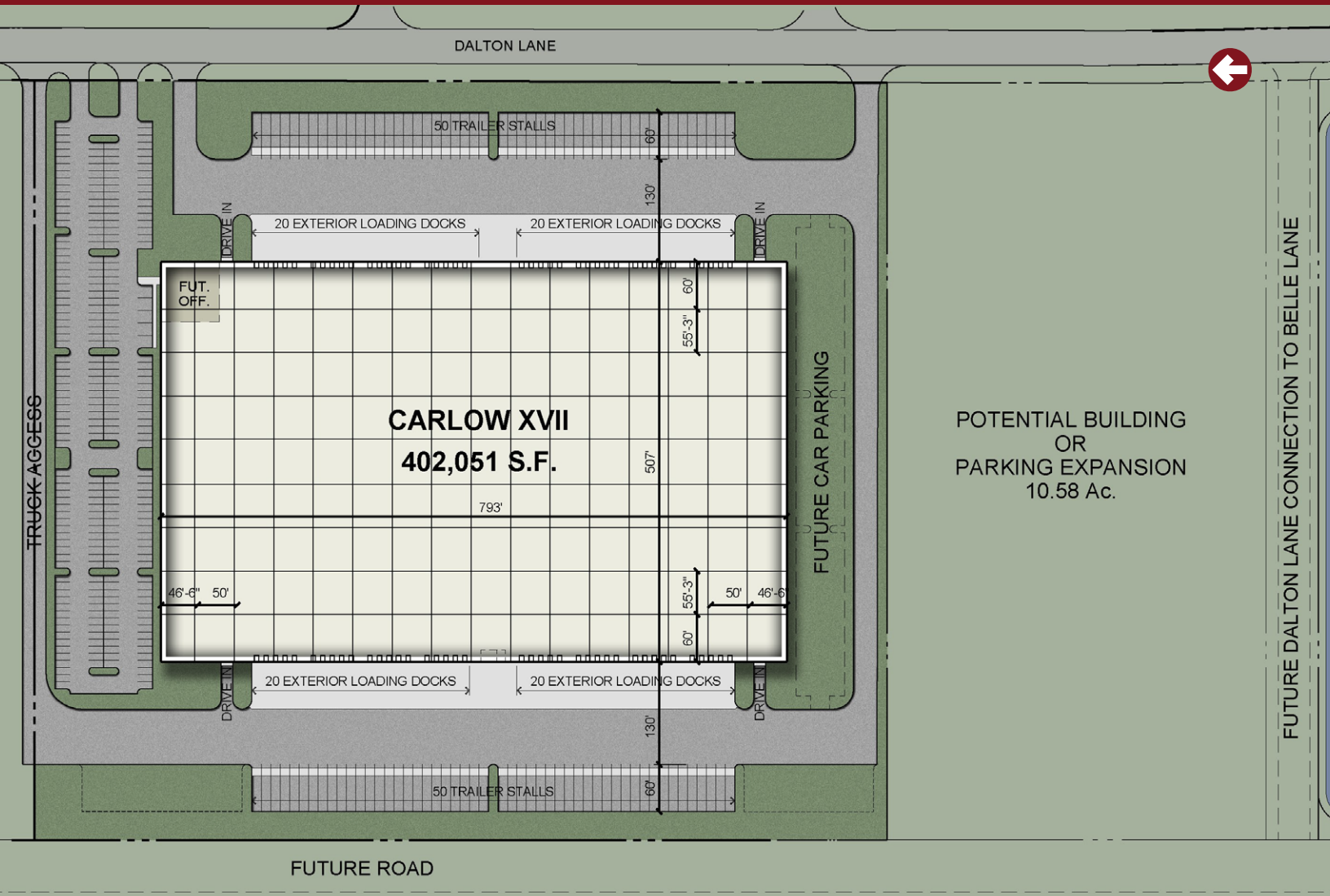


northern
Northern Builders, Inc.

CABOT

 CUSHMAN &
WAKEFIELD

CARLOW XVII - OFFERING 402,051 SF (DIVISIBLE/EXPANDABLE)



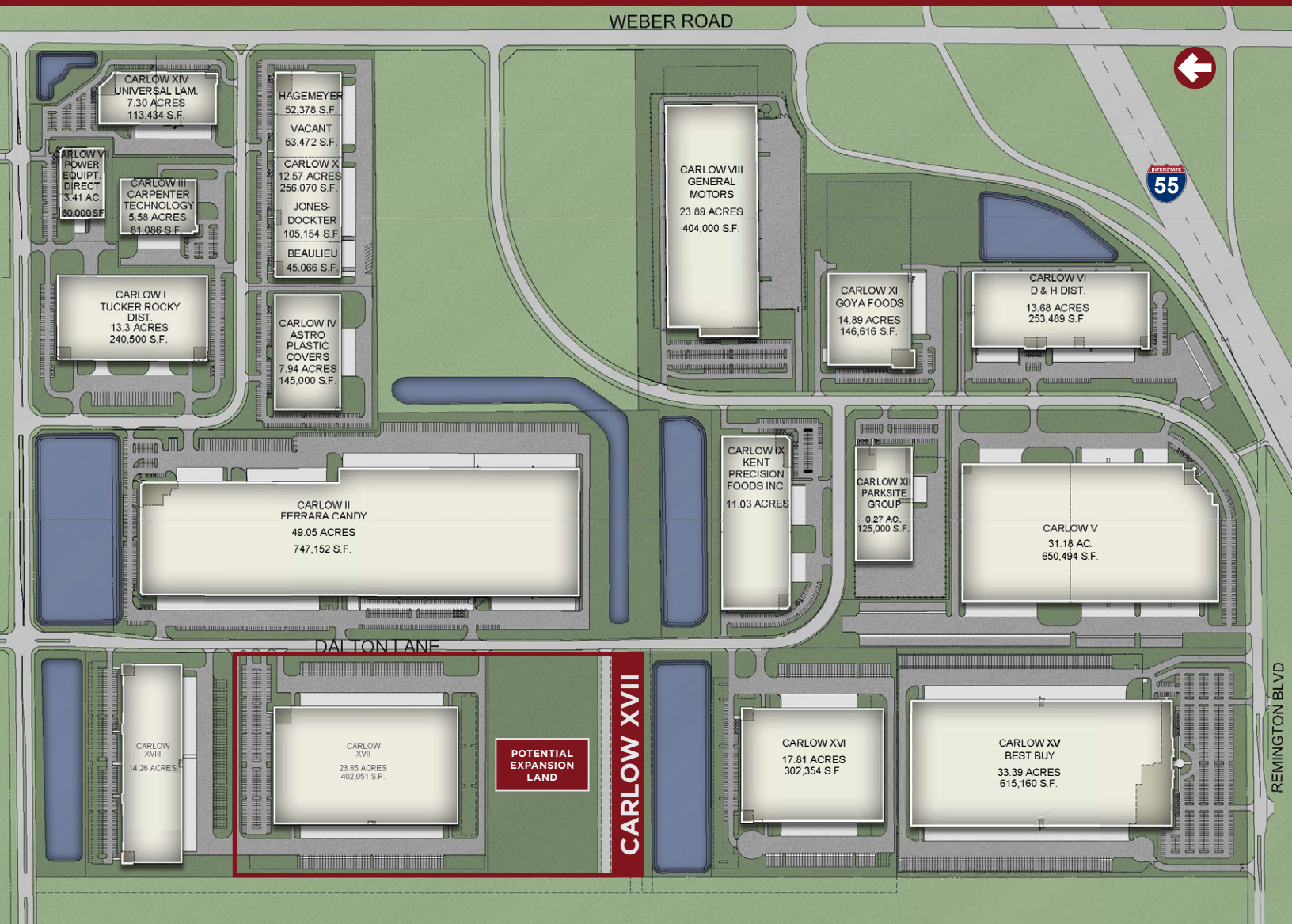
FLEXIBLE SITE PLAN TO ACCOMMODATE BOTH LARGE & MID-SIZE USERS

402,051 Total SF Available	To-Suit Office Space	36' Clear Height	80 Exterior Docks
4 Drive-in Doors	270 Car Parking Spaces (Expandable)	100 Trailer Stalls (Expandable)	±23.85 Acre Site

CARLOW XVII - AERIAL VIEW



CARLOW XVII - THE IDEAL INDUSTRIAL PARK SETTING



SITE HIGHLIGHTS



High Image Park & Building Features



Strategically Located Between Intermodals & UPS Hub



Access to Labor from Chicago & Joliet



Immediate Access to Interstate 55



Flexible Opportunities for Large & Mid-size Users



Catering to a Variety of Tenant Needs & Uses



Surrounded by Amenities
including Hotels, Restaurants,
Health Club & Gas Stations



Proven Owner/Developer
with 90+ Year History



PRIME LOCATION

Developed by Northern Builders, Inc., Carlow Corporate Center offers immediate accessibility to I-55 & I-355. Countless amenities including restaurants and shopping centers surround the immediate area.

CHILD CARE

- 1 Creme de la Creme

HOTELS

- 1 Extended Stay
- 2 Comfort Inn
- 3 Country Inn Suites
- 4 Days Inn

RECREATION

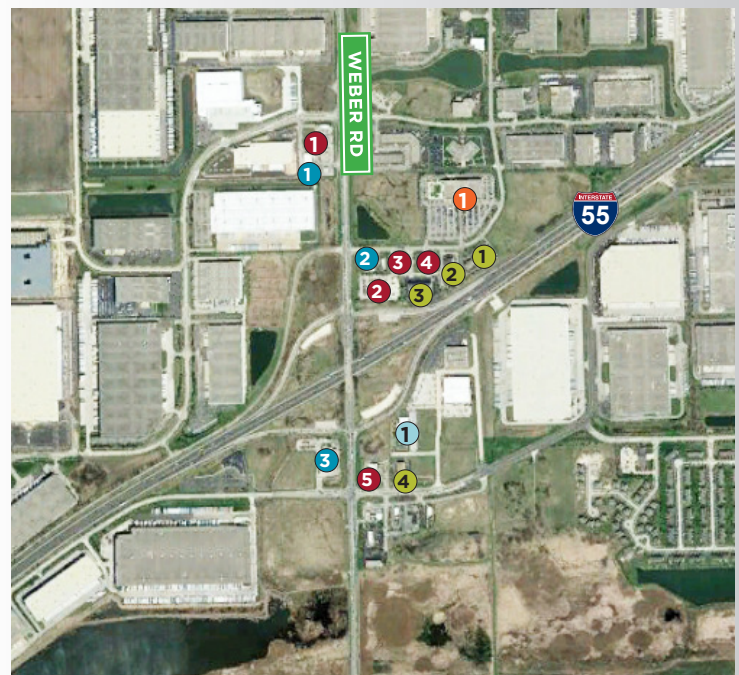
- 1 Lifetime Fitness

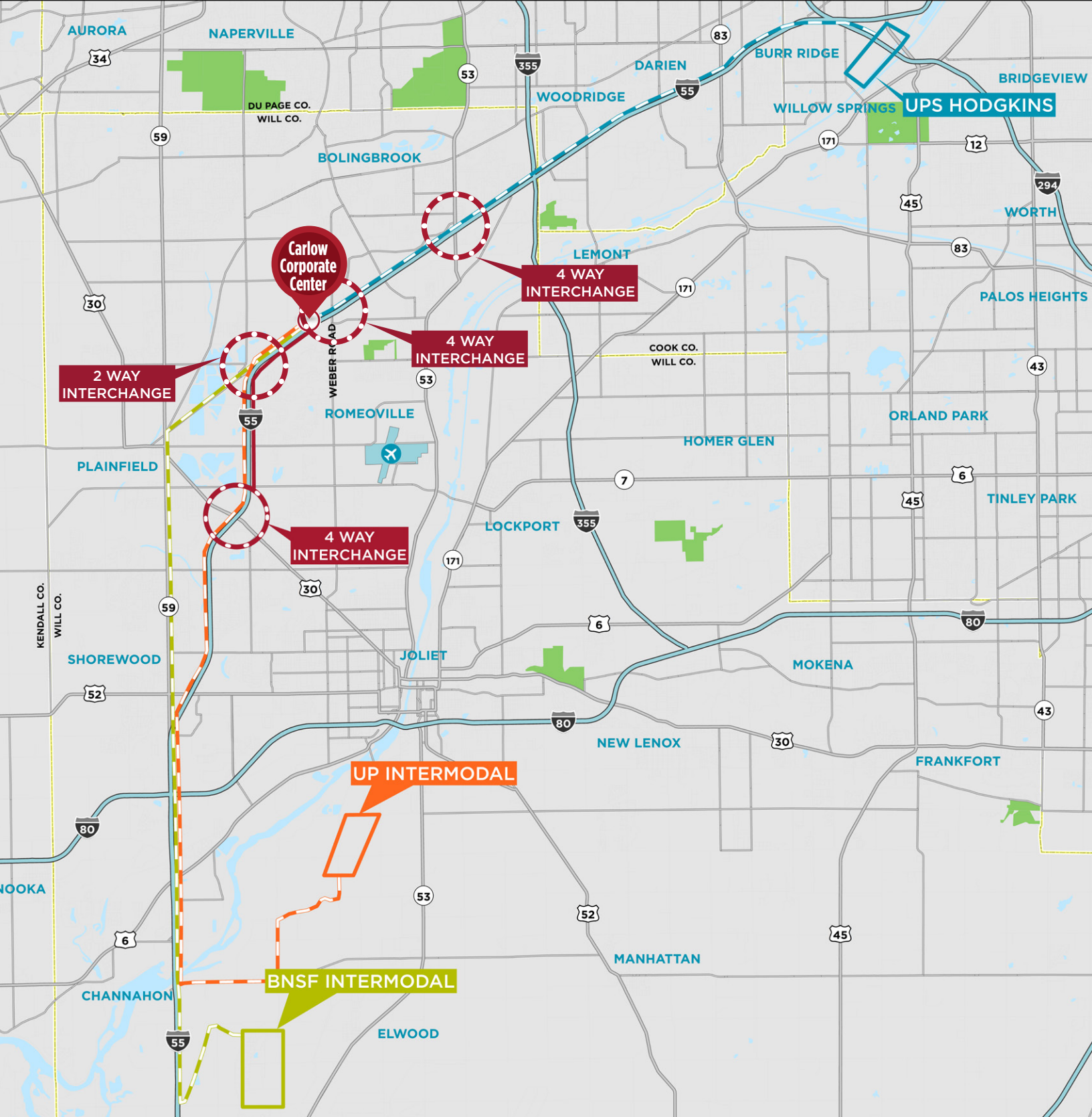
RESTAURANTS

- 1 Titled Kilt
- 2 Cracker Barrel
- 3 Wendy's
- 4 Arby's
- 5 Burger King

RETAIL

- 1 7-Eleven
- 2 Shell Station
- 3 Speedway Station





Matthew J. Grusecki
847 678 5060
mgrusecki@northernbuilders.com

Jason M. West, SIOR
847 518 3210
jason.west@cushwake.com

Sean M. Henrick, SIOR
847 518 3215
sean.henrick@cushwake.com

Michael D. Magliano
847 518 3259
michael.magliano@cushwake.com

Doug R. Pilcher
847 518 3285
doug.pilcher@cushwake.com