

OFFICE FOR LEASE: 660 – 1,049 SF



1038 Leigh Ave.
San Jose, CA



THE PROPERTY

- A multi-tenant office building in the heart of San Jose

PROPERTY HIGHLIGHTS

- Suite 202 - 660 SF
- Suite 203 - 660 SF
- Suite 208 & 209 – 1,049 (can be demised)
- Common Area Kitchenette & Conference Room
- Fruitdale & Bascom Station .05 Miles
- Near Willow Glen and Campbell Amenities

WILLIAM LONGO

408-529-8110
DRE #02126991
wlongo@globalcommercialprop.com

ALEX CARUSO

408-464-8388
DRE #02136271
acaruso@globalcommercialprop.com





SUITE 203

- Lobby Entrance adjacent to Large Open Area
- 1 Office or Conference Room



WILLIAM LONGO

408-529-8110

DRE #02126991

wlongo@globalcommercialprop.com

ALEX CARUSO

408-464-8388

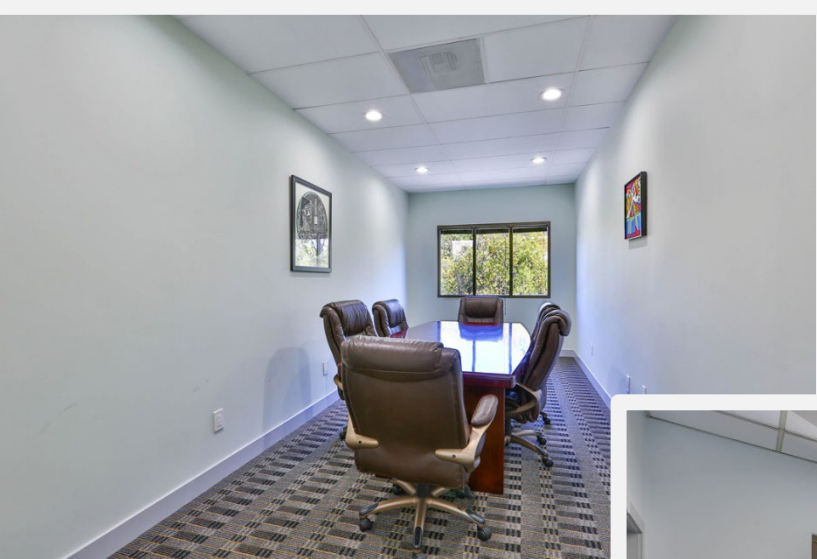
DRE #02136271

acaruso@globalcommercialprop.com

OFFICE FOR LEASE: 660 – 1,049 SF

GLOBAL
COMMERCIAL

1038 Leigh Ave.
San Jose, CA



WILLIAM LONGO

408-529-8110

DRE #02126991

wlongo@globalcommercialprop.com

ALEX CARUSO

408-464-8388

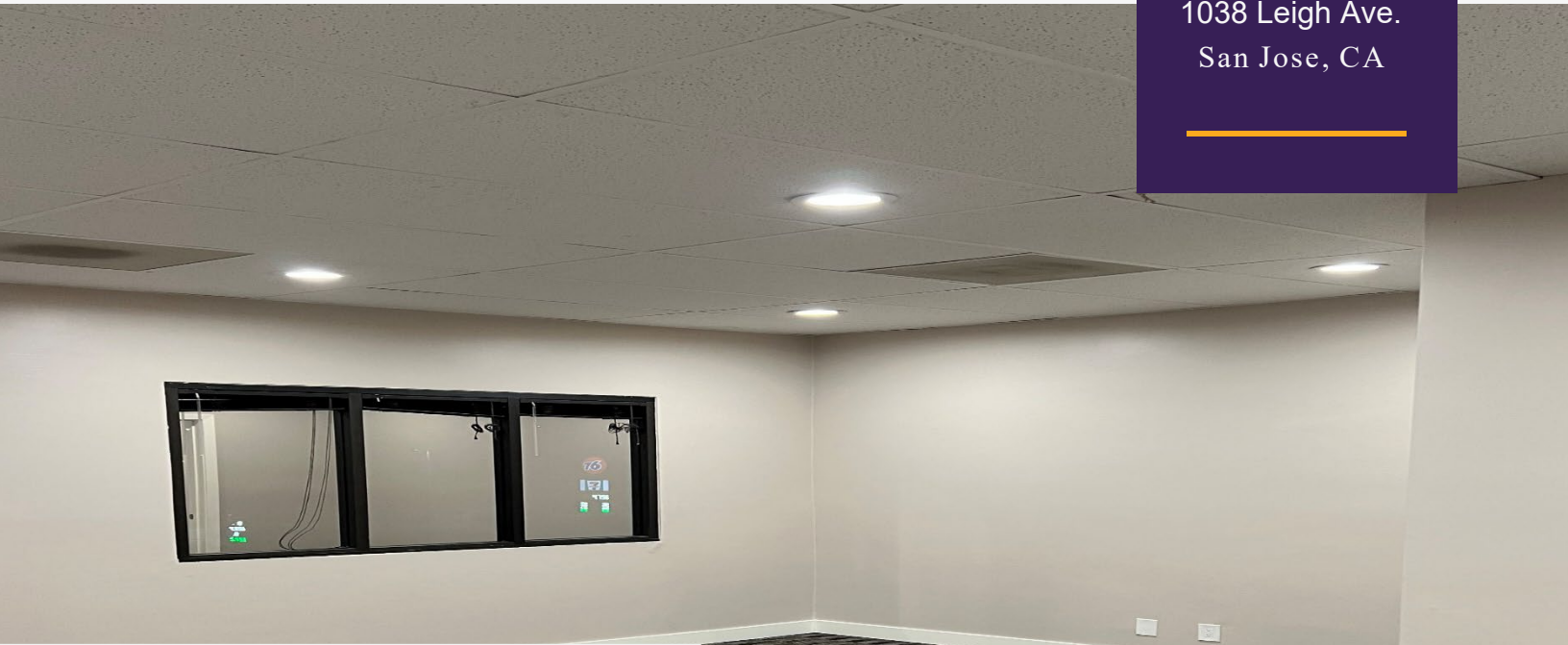
DRE #02136271

acaruso@globalcommercialprop.com

OFFICE FOR LEASE: 660 – 1,049 SF

GLOBAL
COMMERCIAL

1038 Leigh Ave.
San Jose, CA



SUITE 208 & 209 1,049 SF

- Suite 208 – 591 SF
- Suite 209 – 458 SF

WILLIAM LONGO

408-529-8110

DRE #02126991

wlongo@globalcommercialprop.com

ALEX CARUSO

408-464-8388

DRE #02136271

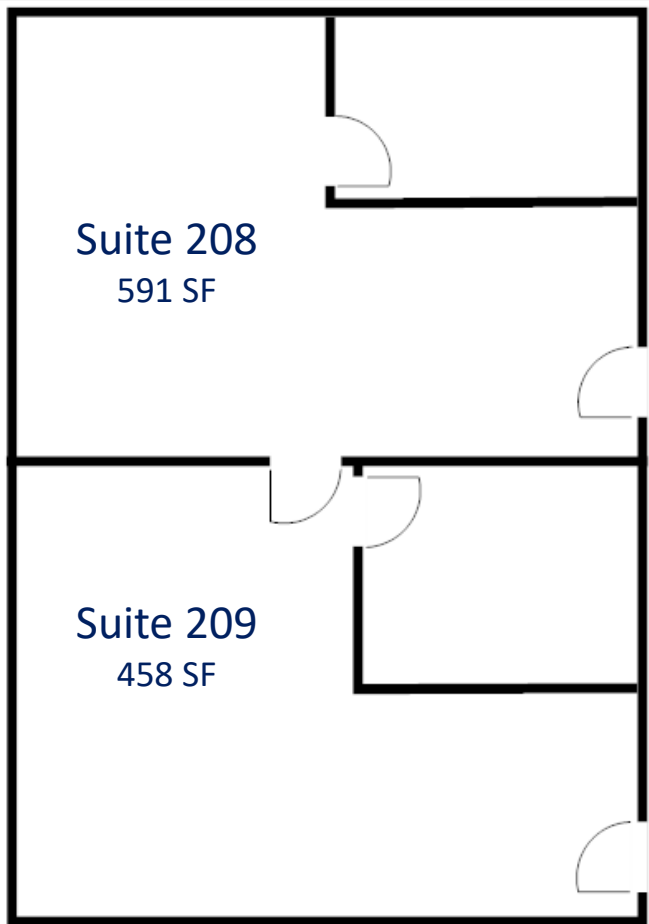
acaruso@globalcommercialprop.com



OFFICE FOR LEASE: 660 – 1,049 SF



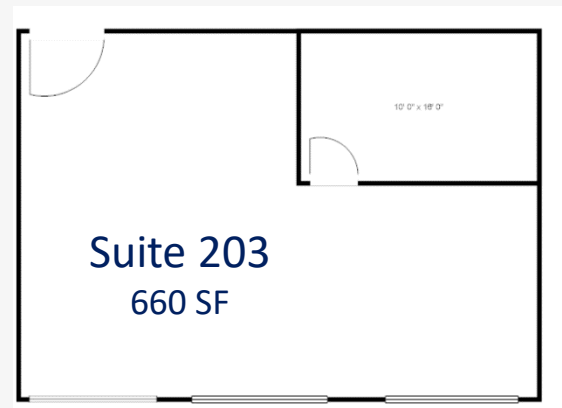
1038 Leigh Ave.
San Jose, CA



Suite 208 & 209
1,049 SF



Suite 202
660 SF



Suite 203
660 SF

WILLIAM LONGO

408-529-8110
DRE #02126991
wlongo@globalcommercialprop.com

ALEX CARUSO

408-464-8388
DRE #02136271
acaruso@globalcommercialprop.com