

DERITA PLAZA

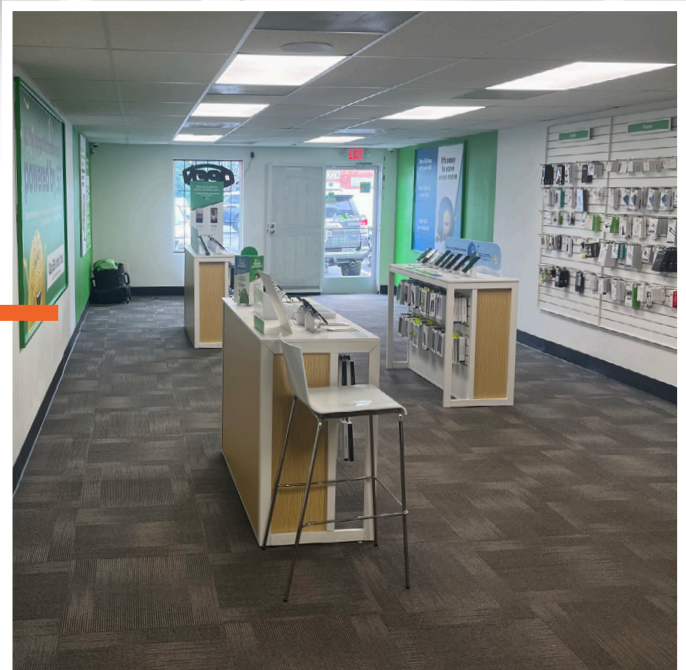
2809 West Sugar Creek Rd, Charlotte, NC



± 1,250 SF Storefront Retail / Office Space Available for Lease

- 1,250 sf available for lease
- Storefront retail / office space
- Open concept floor plan
- One (1) kitchenette
- One (1) private restroom

LEASE RATE: \$3,500 / MONTH NNN



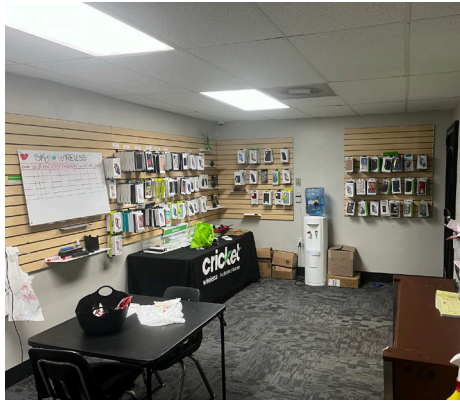
Lem Doss
Associate
704 285 2069
lem.doss@avisonyoung.com

Ryan Kendall
Vice President
704 612 0395
ryan.kendall@avisonyoung.com

**AVISON
YOUNG**

STOREFRONT RETAIL / OFFICE SPACE

2809 West Sugar Creek Rd, Charlotte, NC



Location Overview

Located in Charlotte, this ±1,250 SF retail space is available for lease. The suite is in an ideal location for a small business looking to plant themselves in a dynamic shopping center with strong anchor tenants. The shopping center is located directly off West Sugar Creek Rd, which sees an average of 17,000 vehicles per day.

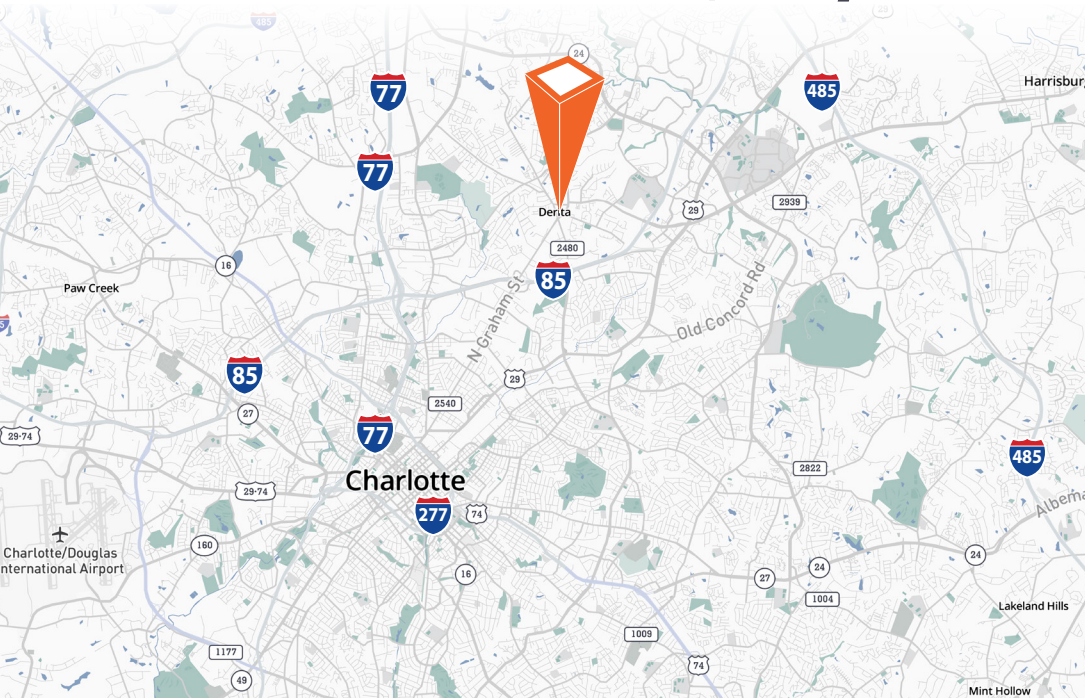
219,562 TOTAL POPULATION

105,997 TOTAL EMPLOYEES

85,369 TOTAL HOUSEHOLDS

8,556 TOTAL BUSINESSES

\$86,065 MEDIAN HOUSEHOLD INCOME



For more information:

Lem Doss
Associate
704 285 2069
lem.doss@avisonyoung.com

Ryan Kendall
Vice President
704 612 0395
ryan.kendall@avisonyoung.com

**AVISON
YOUNG**