

Flex Industrial/Showroom Space Available

Available Space Opportunities
from 1,500 SF to 20,000 SF

13295 Business 331
Freeport, FL 32439

PHASE 2 LEASING NOW!



Highlights

Lafayette Creek Commerce Park is a great location for storage and distribution of building construction products, food & beverage goods, light manufacturing/fabrication, subcontractors, and other local & regional business service and distribution requirements. The park's location is convenient to serve the beaches submarkets of South Walton, Destin and Panama City Beach, and the immediately surrounding Freeport/DeFuniak Springs markets in the north part of the County, which are rapidly expanding as the primary bedroom communities serving the affluent Beach markets.

- + Multi-building, 122,000 SF flex industrial park
- + Dock-high and grade level access
- + Perfect for a variety of commercial business services, including light fabrication and assembly, storage and distribution of building supplies, food & beverage, and other commercial goods.
- + Competitive lease terms starting at \$16.00/SF base rent; Call for additional information!
- + In the heart of Walton County, the 4th fastest growing county in the US

Site Plan

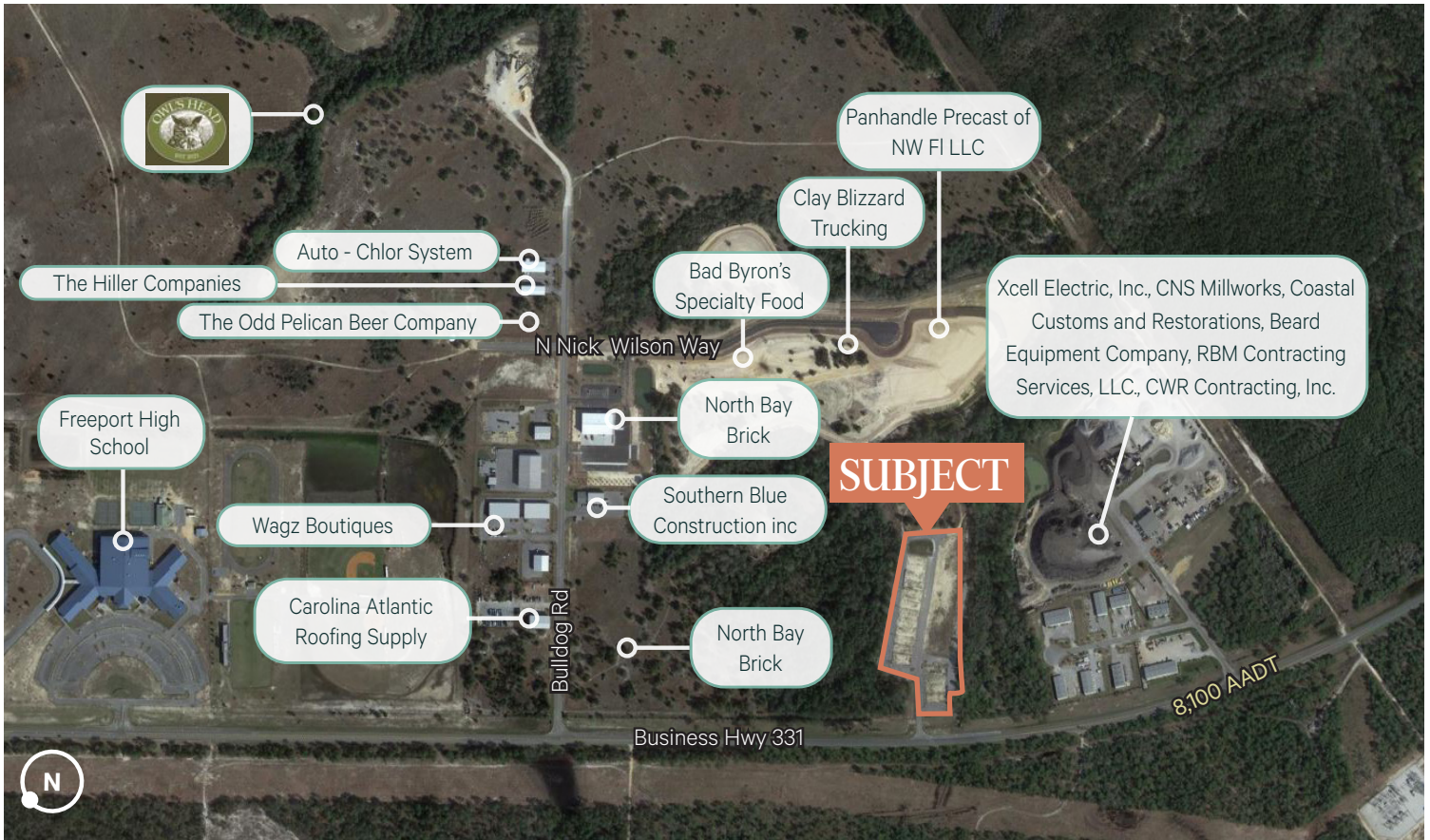


Phase 1 -
Limited Opportunities
Remain!

Phase 3 -
Coming Soon!

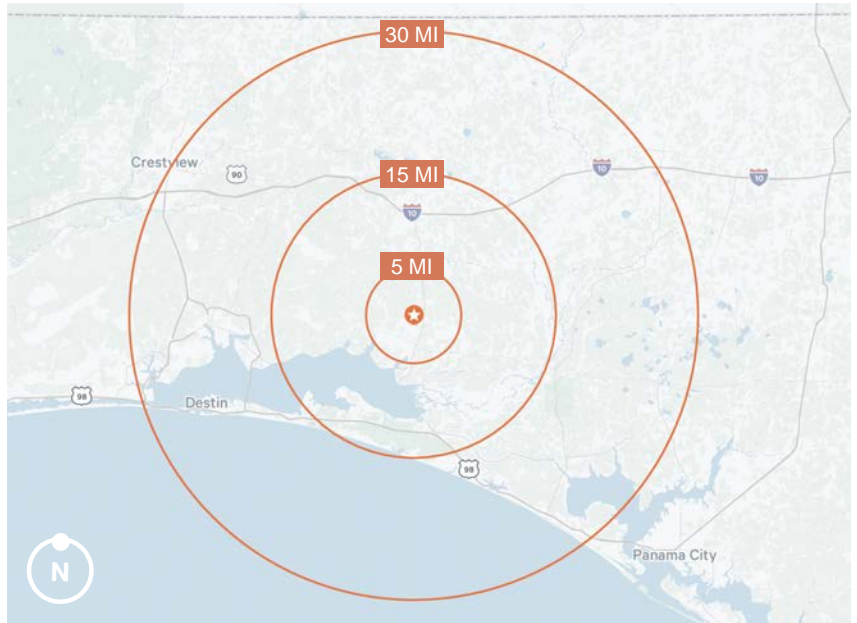
Phase 2 -
Leasing Now!

Lafayette Creek Commerce Park
 13295 Business 331 | Freeport, FL 32439



Centrally Located and Convenient to the Entire Emerald Coast Region

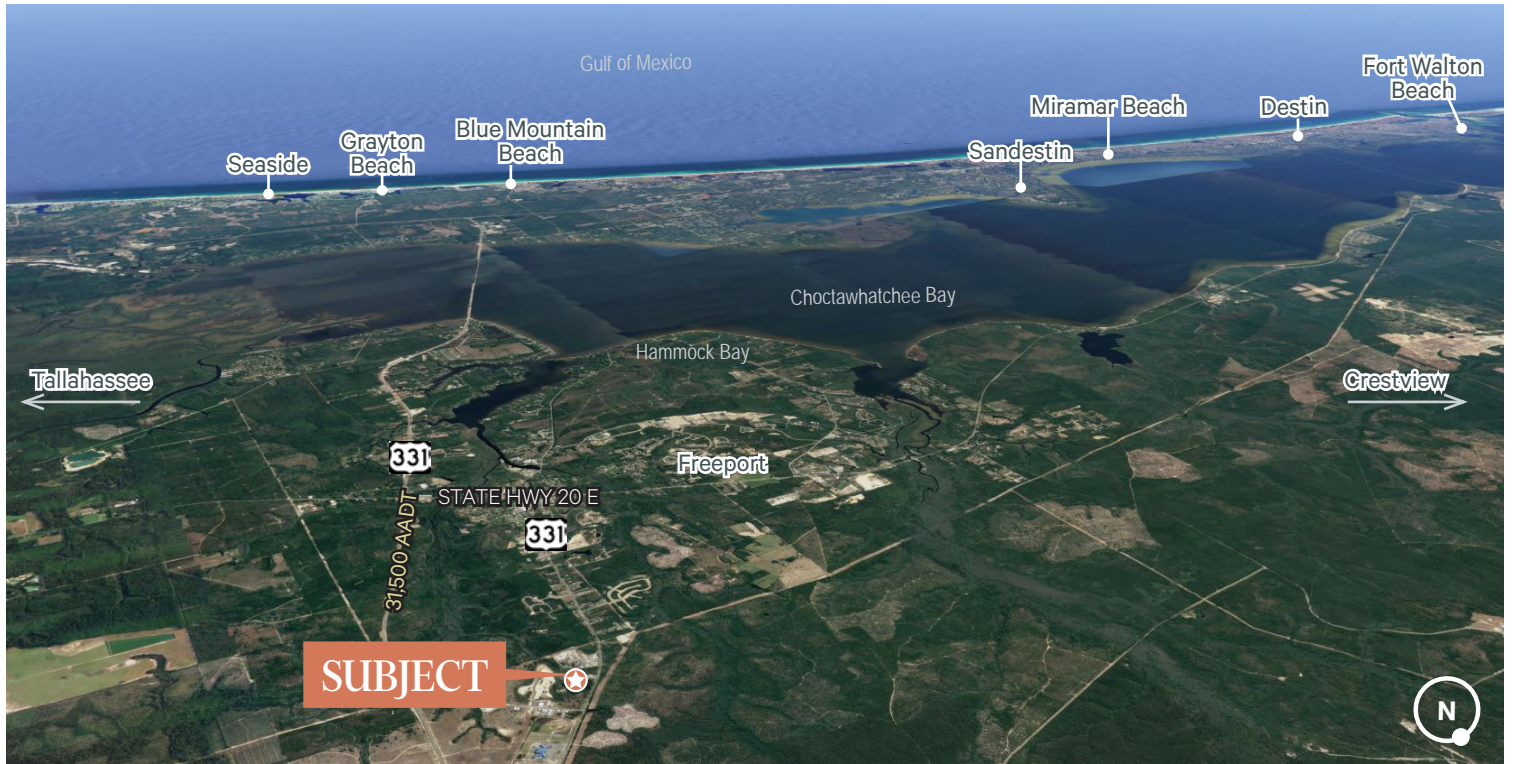
Located on Business Hwy 331 in rapidly growing Freeport, FL, with convenient access to US Hwy 331, Interstate 10, and State Road 20, the major transportation routes serving Walton County, the Emerald Coast and the entire Florida Panhandle. Ideally positioned to easily access both the growing Beaches submarkets and the immediately surrounding Freeport/DeFuniak Springs markets in the north part of the County. In the heart of Walton County, the 4th fastest growing county in the US, known for its famous white sand beaches, clear emerald waters of the Gulf of Mexico, and its new urbanist resort communities found along the Beaches of South Walton.



Demographics	5 mi.	15 mi.	30 mi.
2023 Population	8,302	54,075	243,895
2023 Households	3,419	31,917	147,137
2023 Average Household Income	\$98,188	\$101,858	\$105,739
2020-2023 Annual Population Growth Rate	4.72%	3.57%	2.01%
2023 Businesses	252	2,406	11,676

Construction Status – August, 2023





Nearby Destinations	Distance
Interstate 10	12 Miles
Beaches of South Walton	13 Miles
Sandestin/Miramar Beach	23 Miles
Destin	28 Miles
Niceville	20 Miles
Crestview	40 Miles
Fort Walton Beach	43 Miles
Panama City Beach	34 Miles
Pensacola	70 Miles
Tallahassee	100 Miles

Contact Us

Tom Watson
 Senior Vice President
 +1 850 527 3254
 thomas.watson@cbre.com

Elizabeth Forsythe
 Senior Associate
 +1 850 585 5290
 elizabeth.forsythe@cbre.com

Sam Herrera
 Associate
 +1 714 227 3829
 sam.herrera@cbre.com