



## MOVE-IN READY FOR LEASE – OFFICE SUITES MIRA VISTA OFFICE PARK 2364-2372 South Uecker Lane, Lewisville, TX

### LOCATION:

Ideal location for professional office tenants.

Move-in ready office space for lease in single-story buildings located in the Mira Vista professional office park off FM 3040 (East Round Grove Road) between Business Highway 121 and Rockbrook Drive. The location has easy access to I-35 E, Sam Rayburn Tollway and all nearby retail and restaurant offerings.

### SPACES AVAILABLE:

\*\*\*MOVE-IN READY\*\*\*

#### 2364 S Uecker Lane

- Entire Bldg – 2,469 RSF
- Available 2/1/2026

#### 2368 S Uecker Lane

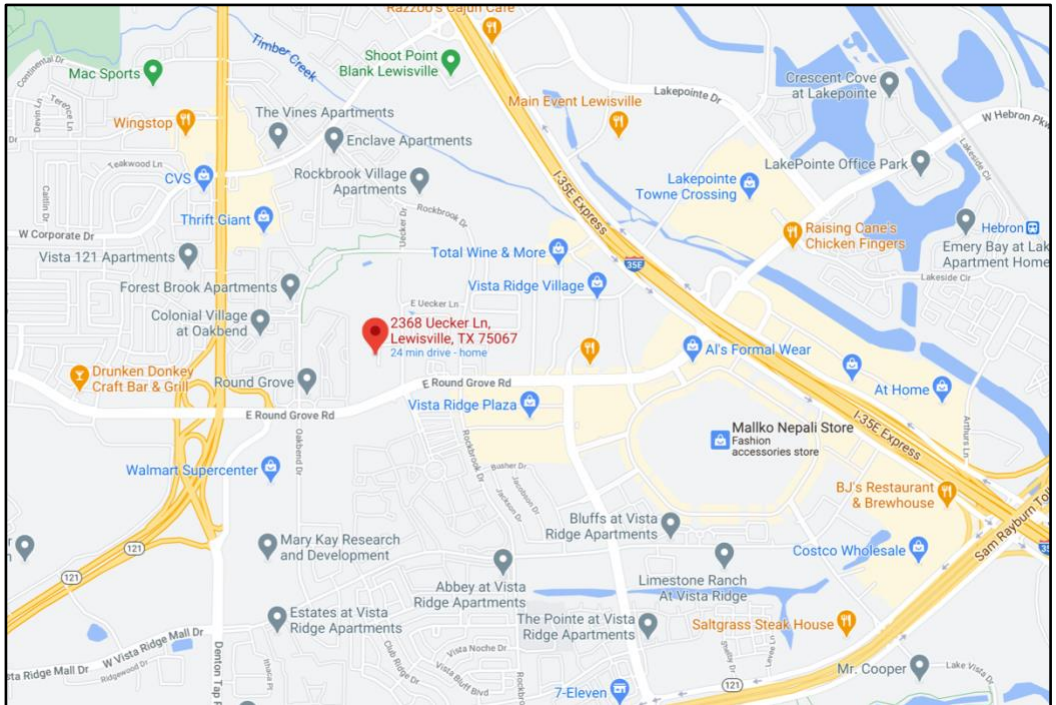
- Suite 200 – 1,400 RSF
- Available 1/1/2026

#### 2370 S Uecker Lane

- Suite 200 – 1,376 RSF
- Available 2/1/2026

### LEASE RATE:

Competitive Rates - See Broker for Pricing.



### FOR INFORMATION:

Diana Pergande: [Diana@BridgeRealtyTexas.com](mailto:Diana@BridgeRealtyTexas.com)  
[www.BridgeRealtyTexas.com](http://www.BridgeRealtyTexas.com) | 972.899.1851  
400 Parker Square, Suite 270H | Flower Mound, TX 75028

This information is believed to be accurate, but no representation or warranty, express or implied, as to its accuracy or completeness is made by any party. The presentation of this property is submitted subject to errors, omissions, change of price or prior sale or lease, or withdrawal without notice.

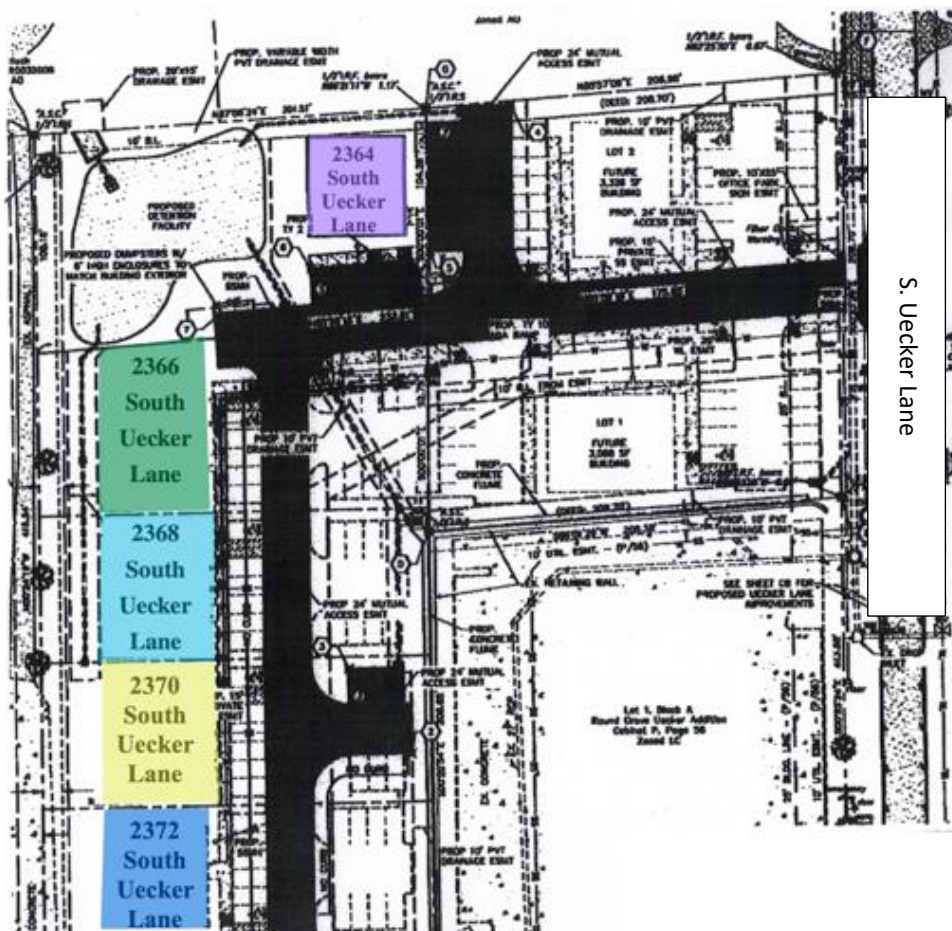


# BUILDING SITE

## MIRA VISTA OFFICE PARK

2364-2372 South Uecker Lane, Lewisville, TX

Mira Vista Office Park  
2364 - 2372 South Uecker Lane  
Lewisville, TX



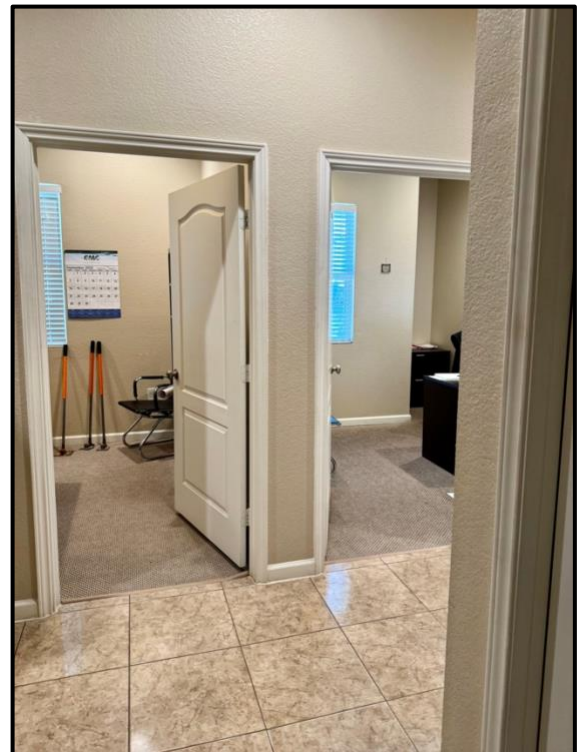
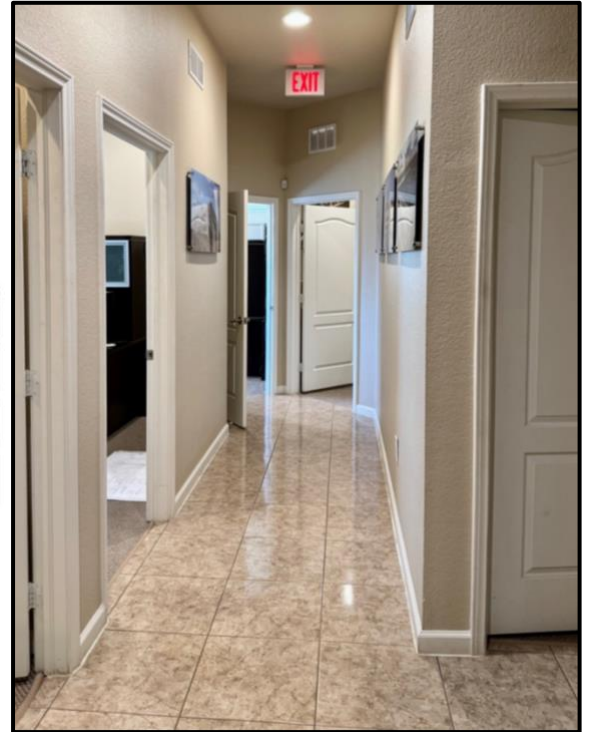
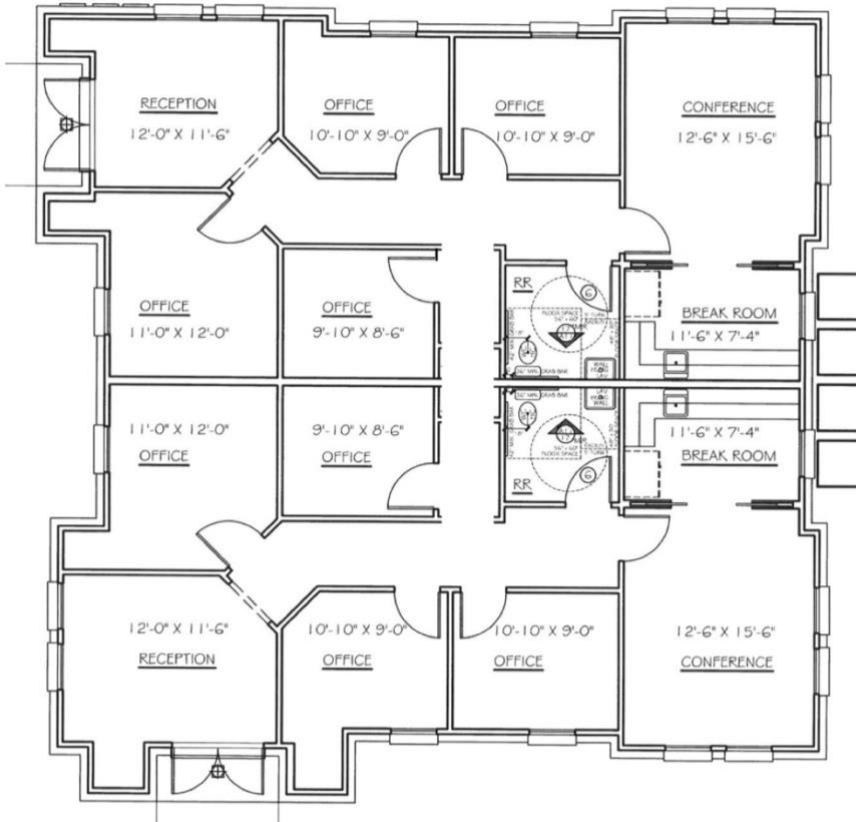




## FLOOR PLAN

2364 South Uecker Lane, Suites A-B  
Lewisville, TX

**2364 S. Uecker Lane, Lewisville, TX 75067**  
**Suites A-B (entire building) – 2,469 RSF**

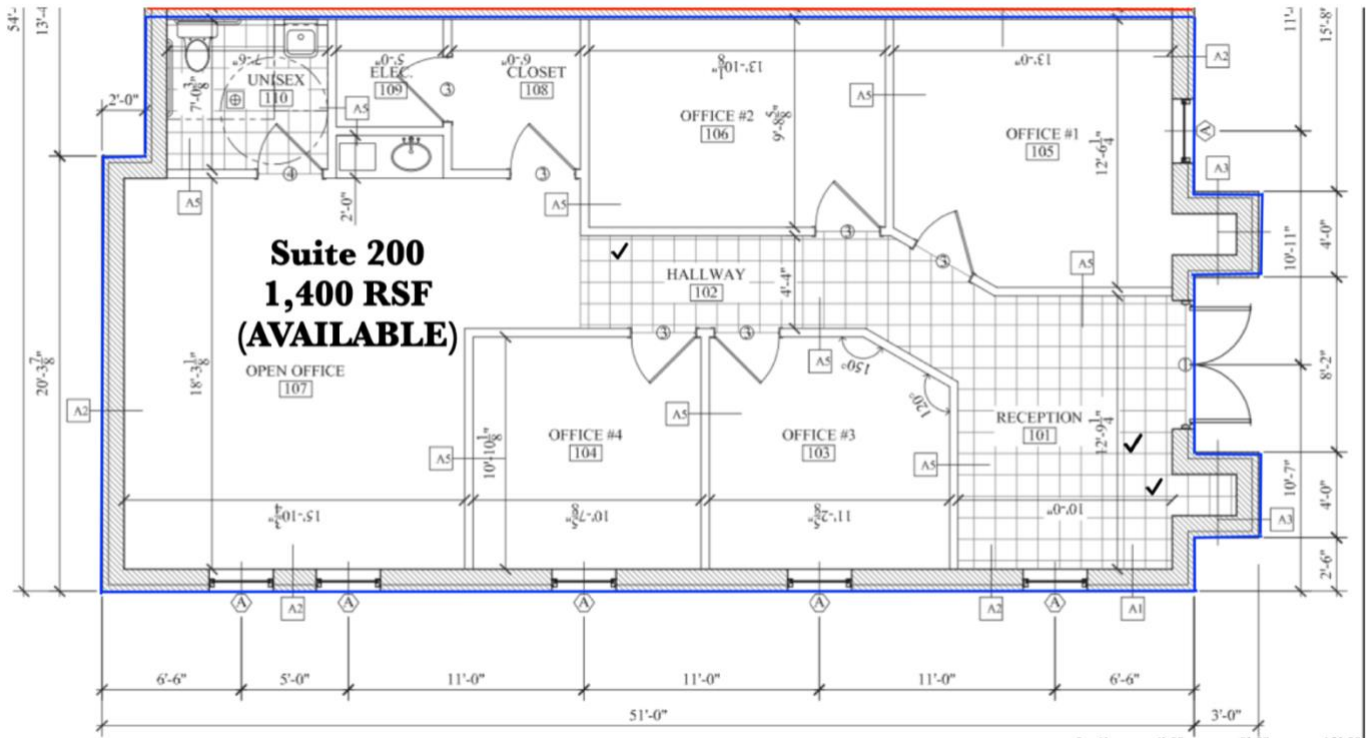




# FLOOR PLAN

2368 South Uecker Lane, Suite 200  
Lewisville, TX

**2368 S. Uecker Lane, Lewisville, TX 75067**  
**Suite 200 – 1,400 RSF**





## FLOOR PLAN

2370 South Uecker Lane, Suite 200  
Lewisville, TX

**2370 S. Uecker Lane, Lewisville, TX 75067**  
**Suite 200 – 1,376 RSF**

