




For lease

1101 E Main Street,
Westminster, SC 29693

± 2,722 SF / 1.4 AC Available

 **JLL** SEE A BRIGHTER WAY

1101 E Main Street, Westminster, SC 29693

Property Information

- ± 2,722 SF / 1.4 AC
- Newly constructed Burger King (2020)
- Hard corner, signalized intersection
- Multiple points of ingress/egress along Oak St. & E Main St.
- Double drive-thru



Estimated population

1-miles	3-miles	5-miles
1,590	5,379	10,663

Number of households

1-miles	3-miles	5-miles
665	2,249	4,266

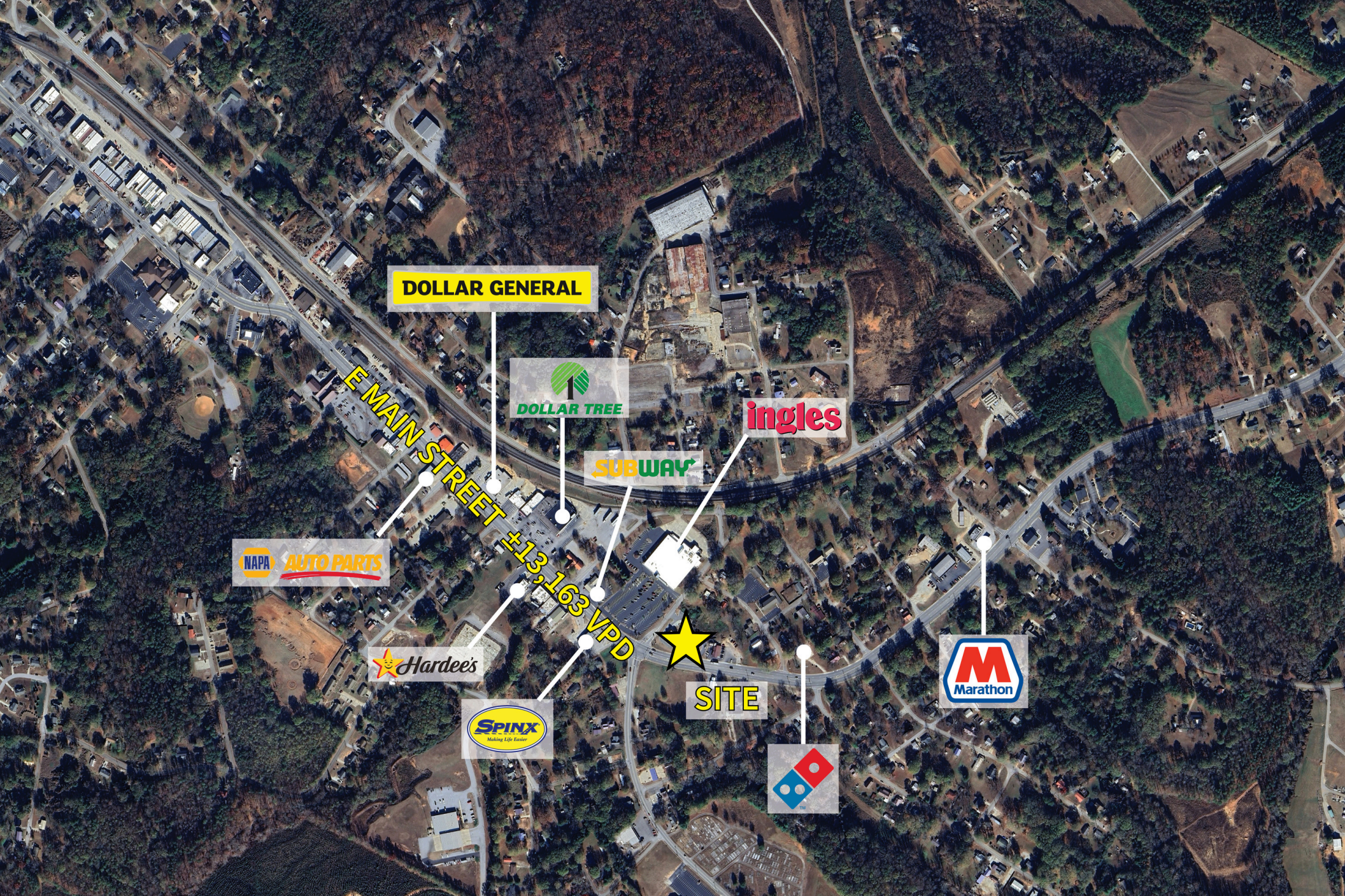
Average household income

1-miles	3-miles	5-miles
\$61,701	\$65,291	\$72,341

Median age

1-miles	3-miles	5-miles
41.7	42.6	44.1

Area Overview



DOLLAR GENERAL



ingles

SUBWAY



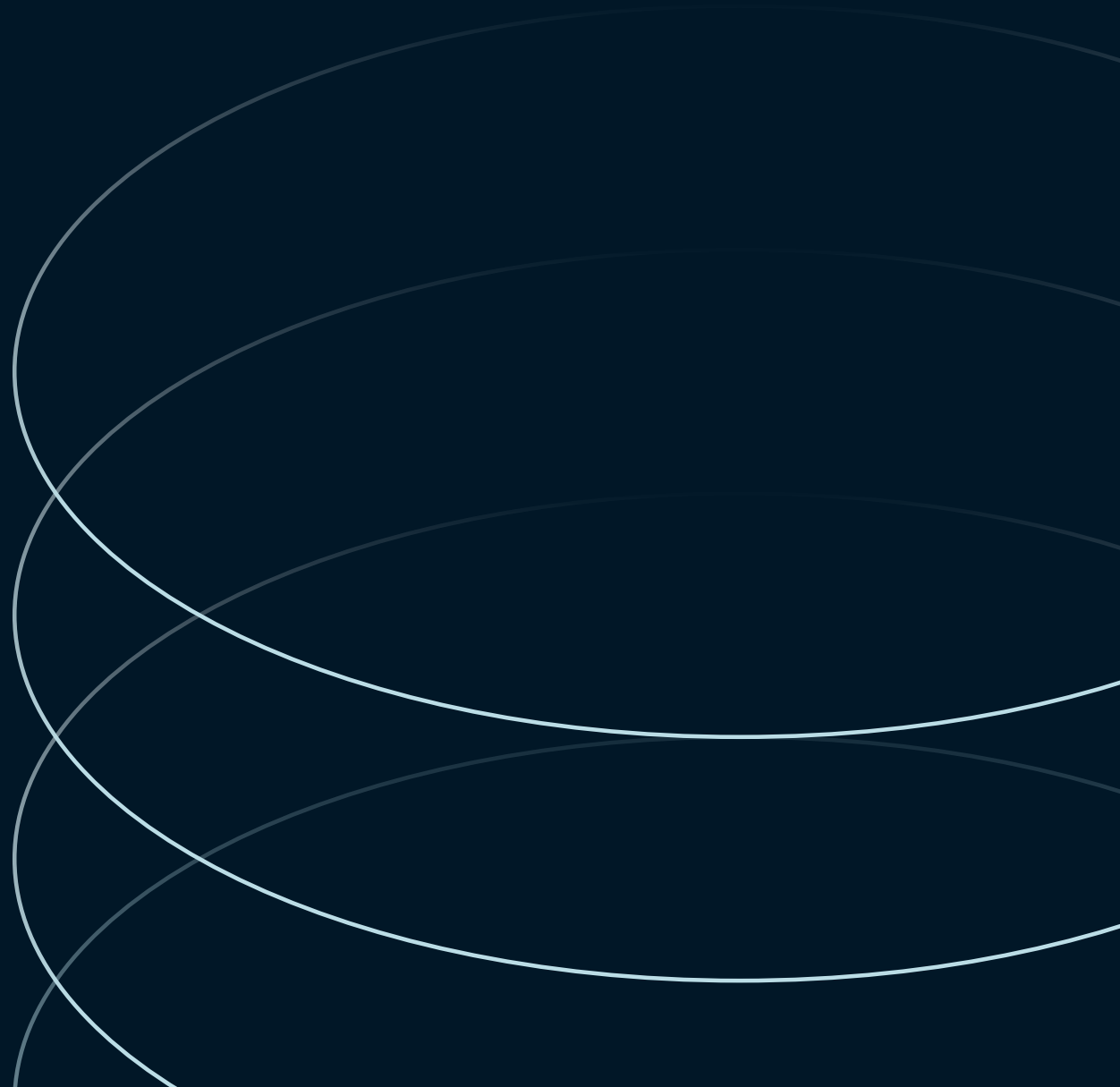
SITE



E MAIN STREET #13,163 VPD

Regional Overview





Reeves Major

Reeves.Major@jll.com

+1 864 608 8960

jll.com