

FOR LEASE, GROUND LEASE, OR BUILD TO SUIT

# SEQUIM RETAIL PADS:

PRIMARY RETAIL DESTINATION FOR THE NORTH KITSAP PENINSULA

190 N PRIEST RD, SEQUIM, WA 98382



# PROPERTY HIGHLIGHTS

## ADDRESS

---

190 N Priest Rd  
Sequim, WA 98382

## LOCATION

---

Located in the retail hub of  
Sequim, WA

## FLEXIBLE ZONING

---

Accommodates most uses such as:  
Hotel, car wash, QSR

## FLEXIBLE SITE PLAN OPTIONS

---

Bldg 1: Shop Spaces

Bldg 2: Drive-Thru Pad For  
Ground Lease or BTS

Bldg 3: ± 15,000 SF; Single or  
Multi-Tenant Opportunities

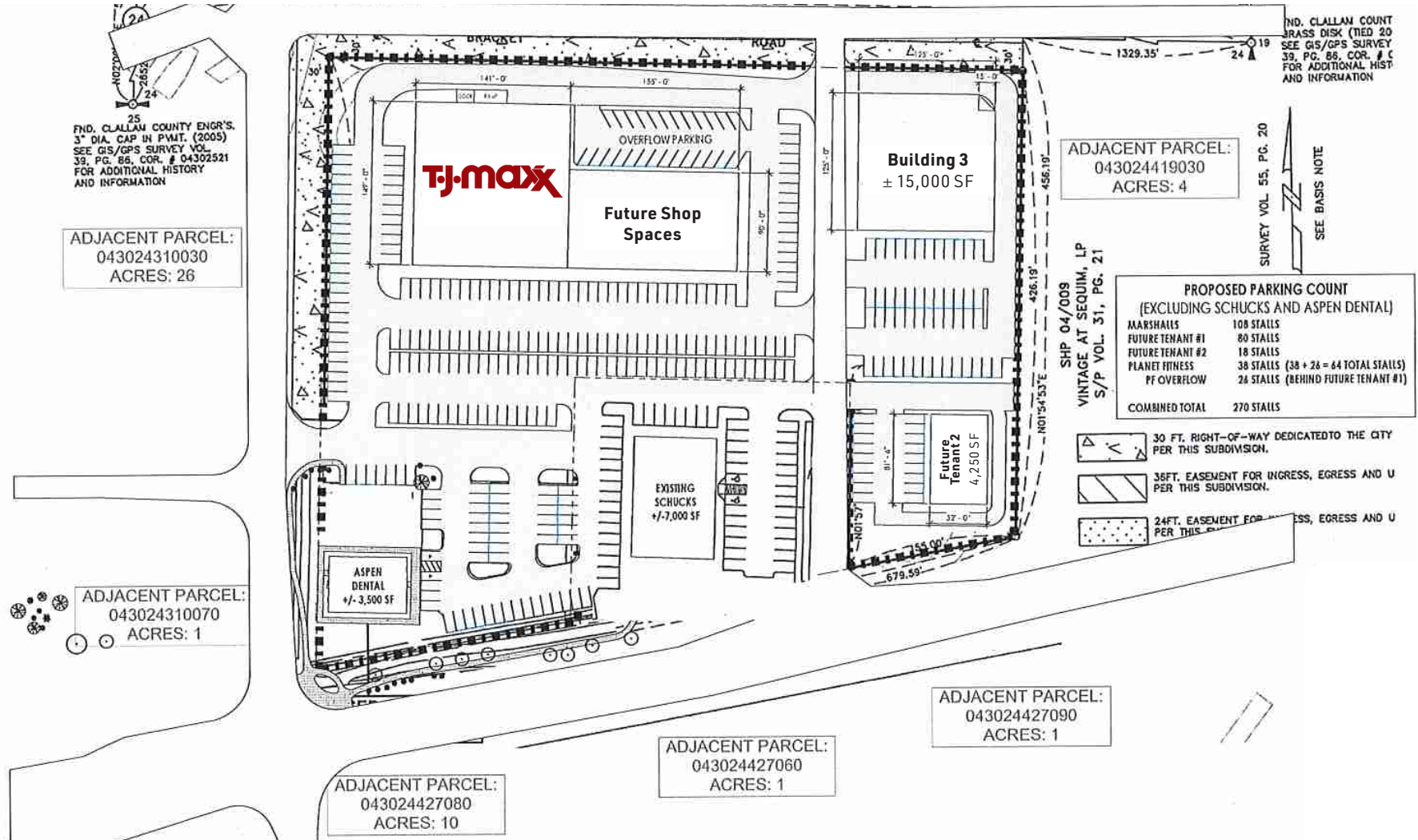
## PRICING

---

Call broker for rates



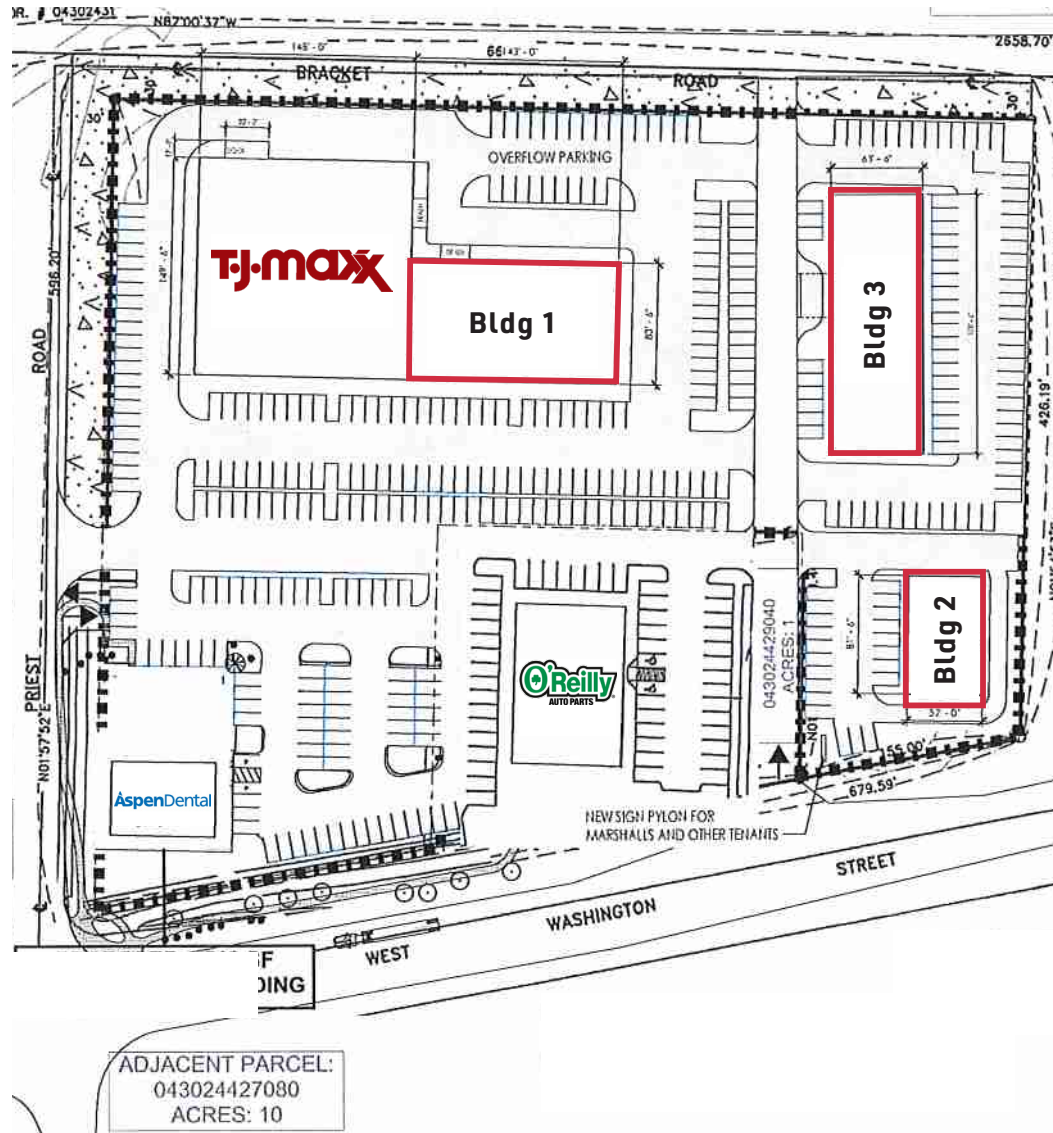
# CONCEPTUAL SITE PLAN OPTION A



**BARRY KELLY**  
+1 425 586 5625  
bkelly@nai-psp.com

**MATT LE**  
+1 425 586 5647  
mle@nai-psp.com

# CONCEPTUAL SITE PLAN OPTION B

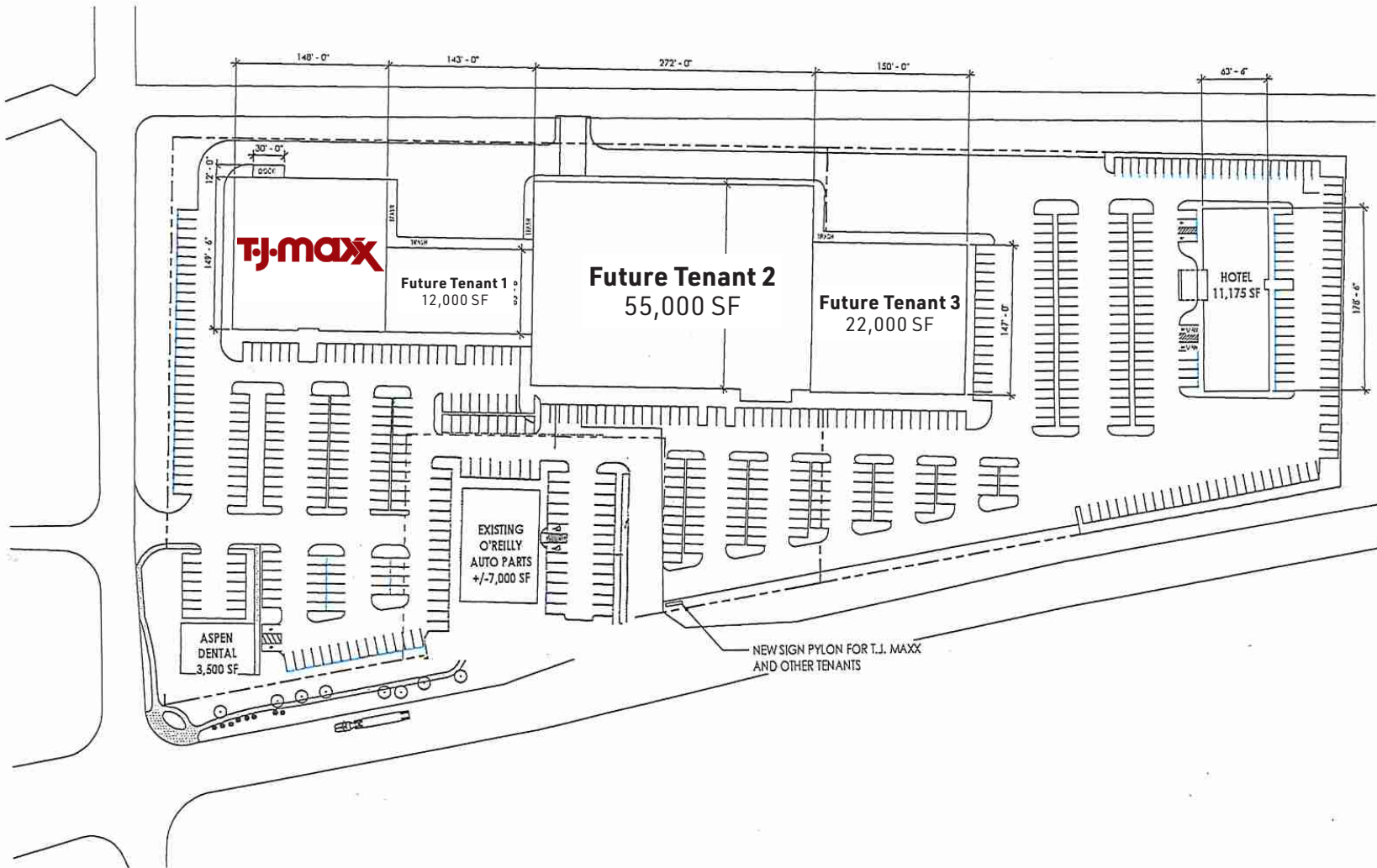


**BARRY KELLY**  
+1 425 586 5625  
bkelly@nai-psp.com

**MATT LE**  
+1 425 586 5647  
mle@nai-psp.com

# CONCEPTUAL SITE PLAN OPTION C

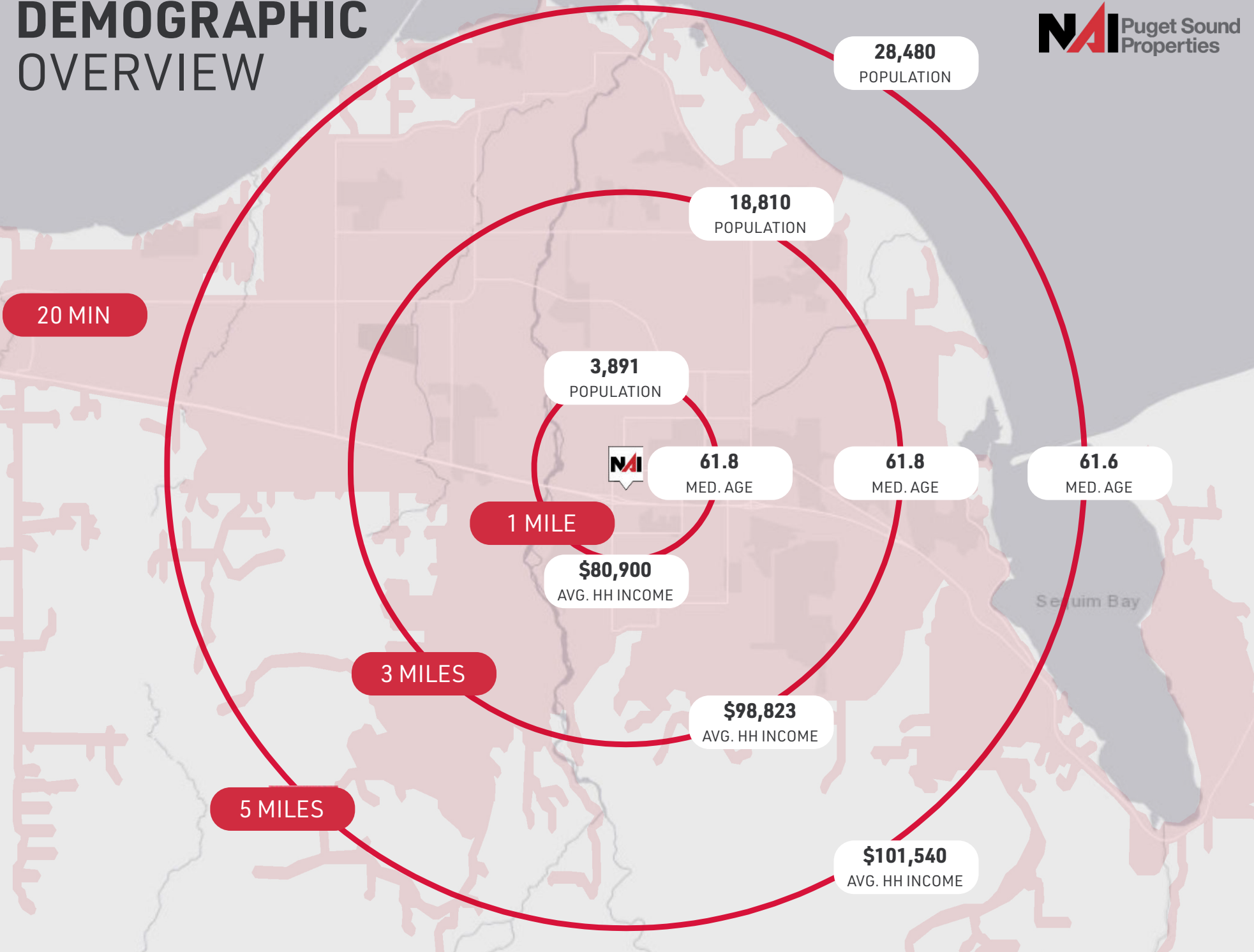
WITH ADDITIONAL 4 ACRES

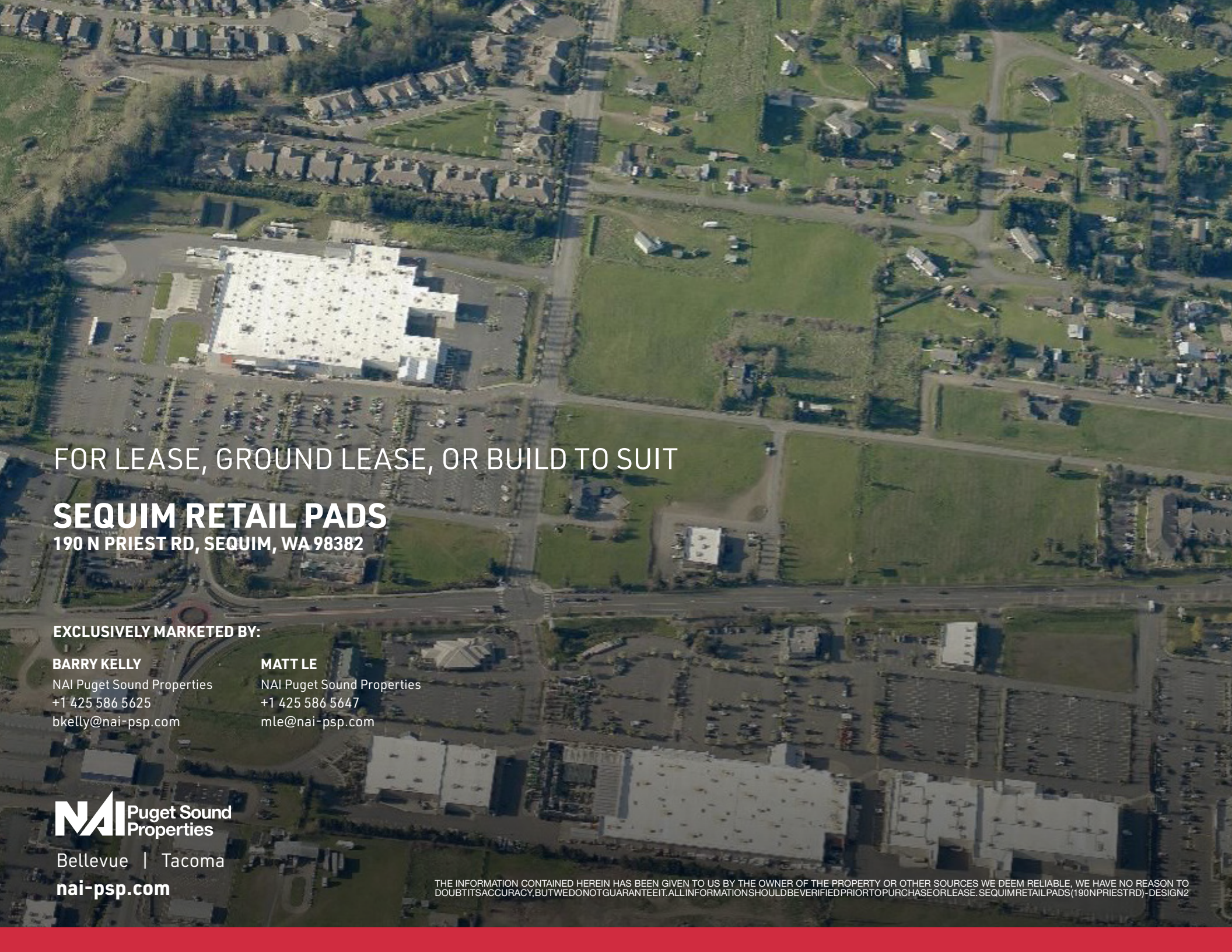


**BARRY KELLY**  
+1 425 586 5625  
bkelly@nai-psp.com

**MATT LE**  
+1 425 586 5647  
mle@nai-psp.com

# DEMOGRAPHIC OVERVIEW





FOR LEASE, GROUND LEASE, OR BUILD TO SUIT

**SEQUIM RETAIL PADS**  
190 N PRIEST RD, SEQUIM, WA 98382

EXCLUSIVELY MARKETED BY:

**BARRY KELLY**

NAI Puget Sound Properties  
+1 425 586 5625  
bkelly@nai-psp.com

**MATT LE**

NAI Puget Sound Properties  
+1 425 586 5647  
mle@nai-psp.com

**NAI** Puget Sound  
Properties

Bellevue | Tacoma

[nai-psp.com](http://nai-psp.com)

THE INFORMATION CONTAINED HEREIN HAS BEEN GIVEN TO US BY THE OWNER OF THE PROPERTY OR OTHER SOURCES WE DEEM RELIABLE. WE HAVE NO REASON TO DOUBT ITS ACCURACY, BUT WE DO NOT GUARANTEE IT. ALL INFORMATION SHOULD BE VERIFIED PRIOR TO PURCHASE OR LEASE. SEQUIM RETAIL PADS (190 N PRIEST RD) - DESIGN 2