

# 335 NW 43rd Pl

Des Moines, Iowa 50313  
[www.cbre.com/desmoines](http://www.cbre.com/desmoines)

Positioned in the heart of Des Moines' Northwest industrial submarket, this property offers a prime opportunity for businesses seeking a well-located and functional space.

## Property Details

- + 2,865-8,597 SF
- + Additional 4,000 SF Available
- + Lease Rate: \$11 PSF NNN
- + 12' Overhead Doors
- + 14' Clear Height
- + 150 Amp, 120/208 Volts
- + Reznor Heat



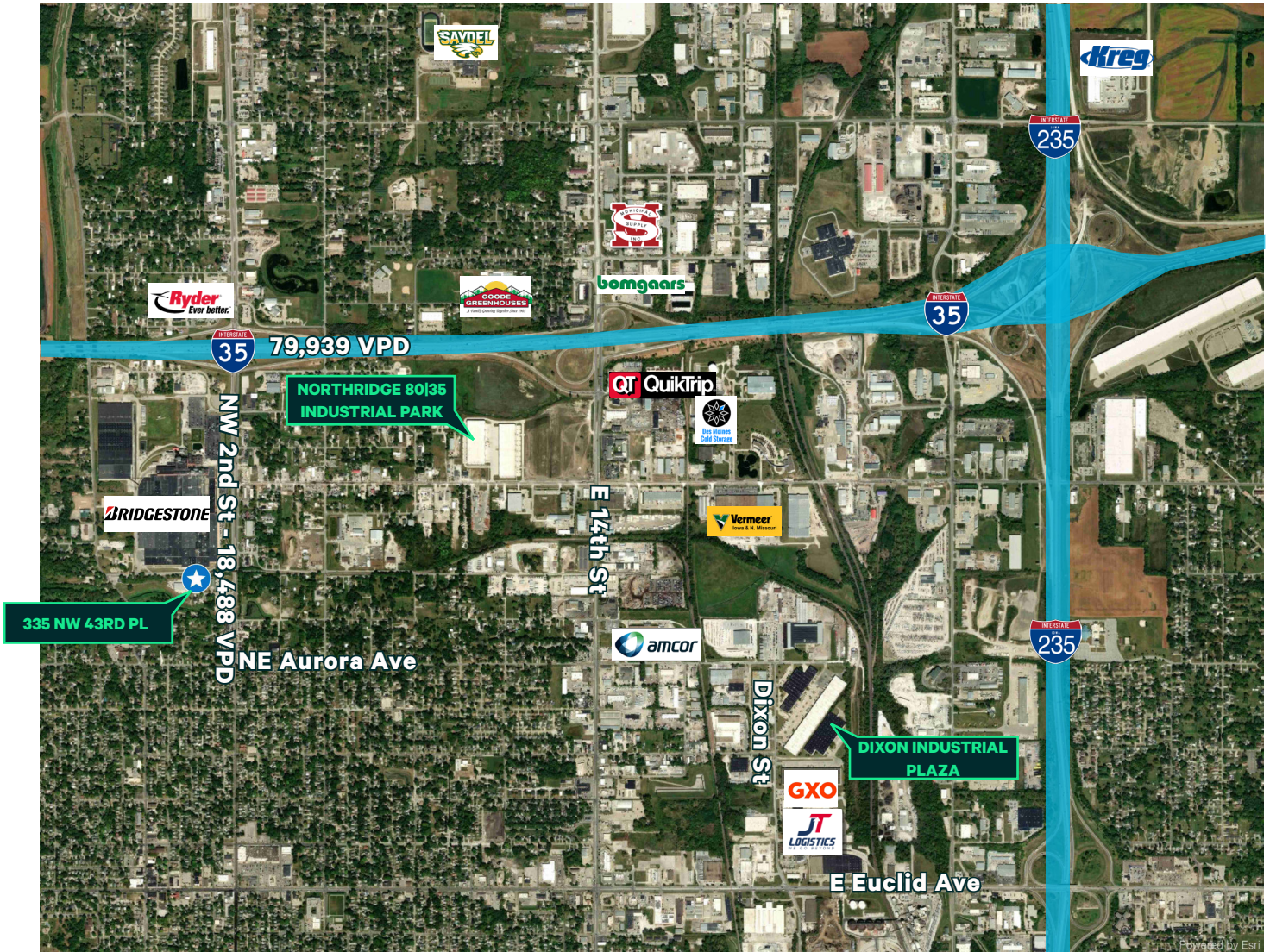


# Property Photos





# Property Location



## Contact Us

### Ajdin Nadarevic

Senior Vice President

+1 515 419 1882

[ajdin.nadarevic@cbre.com](mailto:ajdin.nadarevic@cbre.com)

Licensed in the State of Iowa

### Ben Probst

Senior Associate

+1 515 326 1985

[ben.probst@cbre.com](mailto:ben.probst@cbre.com)

Licensed in the State of Iowa

© 2025 CBRE, Inc. All rights reserved. This information has been obtained from sources believed reliable, but has not been verified for accuracy or completeness. You should conduct a careful, independent investigation of the property and verify all information. Any reliance on this information is solely at your own risk. CBRE and the CBRE logo are service marks of CBRE, Inc. All other marks displayed on this document are the property of their respective owners, and the use of such logos does not imply any affiliation with or endorsement of CBRE. Photos herein are the property of their respective owners. Use of these images without the express written consent of the owner is prohibited.

\* Owner is a licensed real estate professional in Iowa.