

DEVELOPED BY:



±4.7 AC AVAILABLE | LAND
NEC Badura Ave & Montessori St.
FOR GROUND LEASE | IN WHOLE OR IN PART

PROPERTY HIGHLIGHTS

We are pleased to present the opportunity to ground lease a + 4.70 acre parcel (in whole or in part) that is surrounded by The Arroyo Market Square, a 940,000+ square foot retail power center.

The Arroyo Market Square is home to many national big box retailers, as well as in-line shop tenants and features a variety of casual dining restaurants.

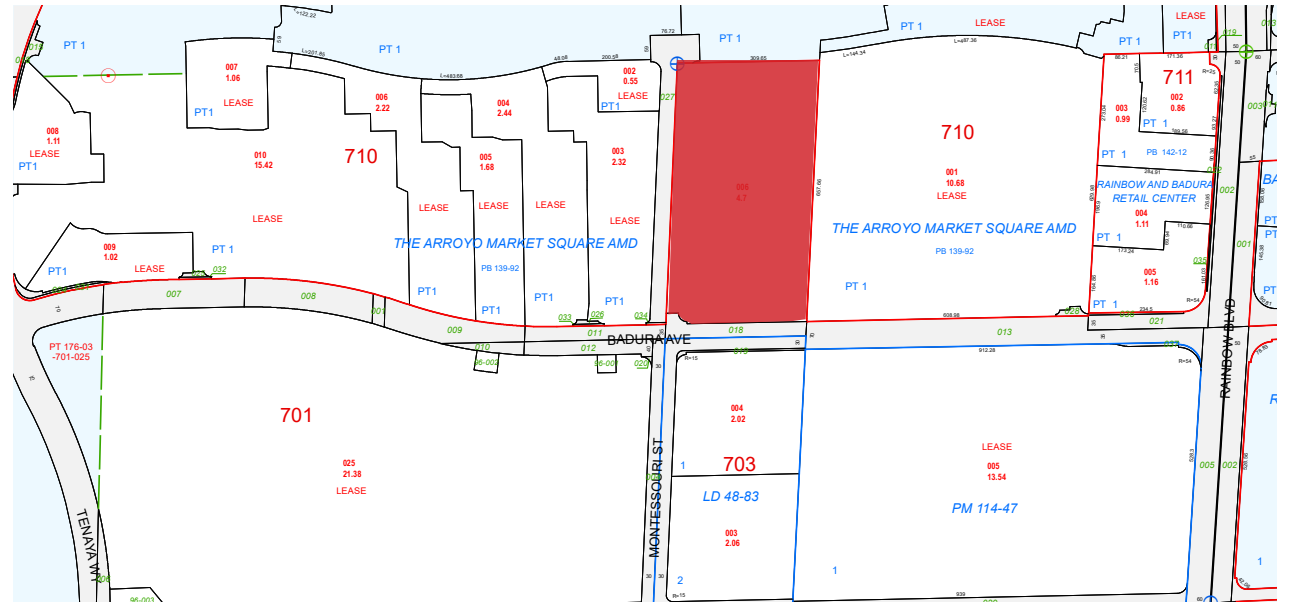
This future development provides for easy access to and from the I-215 Southern Beltway and is ideally located within close proximity to the master planned communities of Summerlin, Rhodes Ranch, Coronado Ranch and Nevada Trails.



±4.70 AC
LAND AREA

RURAL ESTATES RESIDENTIAL
[2 UNITS PER ACRE] (R-E)
ZONING

176-03-701-006
APN



TRADE AREA AERIAL

NEC BADURA AVE & MONTESSOURI ST.
Las Vegas NV, 89118



roicre.com

All information contained herein is from sources we deem reliable, and we have no reason to doubt its accuracy; however, no guarantee or responsibility is assumed thereof, and it shall not form any part of future contracts. Properties are submitted subject to errors and omissions and all information should be carefully verified. *All measurements quoted herein are approximate





SITE PLAN

NEC BADURA AVE & MONTESSOURI ST.
Las Vegas NV, 89118



roicre.com

All information contained herein is from sources we deem reliable, and we have no reason to doubt its accuracy; however, no guarantee or responsibility is assumed thereof, and it shall not form any part of future contracts. Properties are submitted subject to errors and omissions and all information should be carefully verified. *All measurements quoted herein are approximate



AREA DEMOGRAPHICS

NEC BADURA AVE & MONTESSOURI ST.
Las Vegas NV, 89118



POPULATION

| 1 Mile | 3 Miles | 5 Miles |
|--------|---------|---------|
| 11,329 | 129,541 | 350,787 |



AVERAGE HHI

| 1 Miles | 3 Miles | 5 Miles |
|----------|-----------|-----------|
| \$94,007 | \$105,677 | \$107,219 |



TRAFFIC COUNTS

Badura - 8,000 VPD
S Rainbow Blvd - 49,500 VPD
I-215 - 201,000 VPD



Source:
TRINA, NV DOT 2022
SitesUSA 2023

roicre.com

All information contained herein is from sources we deem reliable, and we have no reason to doubt its accuracy; however, no guarantee or responsibility is assumed thereof, and it shall not form any part of future contracts. Properties are submitted subject to errors and omissions and all information should be carefully verified. *All measurements quoted herein are approximate



CONTACT US

KIT GRASKI

Director

702.570.5377 | kgraski@roicre.com
NV License # BS.0015934.LLC

MAUREEN PARCHIA

Vice President

702.570.5124 | maureen@roicre.com
NV License # S.0169395

JEREMY VITALE

Associate

702.550.4951 | jvitale@roicre.com
NV License # S.0189657

GEORGE OKINAKA

Executive Vice President

702.570.5376 | gokinaka@roicre.com
NV License # S.0045747

JONATHAN SERRANO

Senior Associate

702.570.5099 | jonathan@roicre.com
NV License # S.0183243



roicre.com



9121 W Russell Rd
Suite 111
Las Vegas, NV 89148